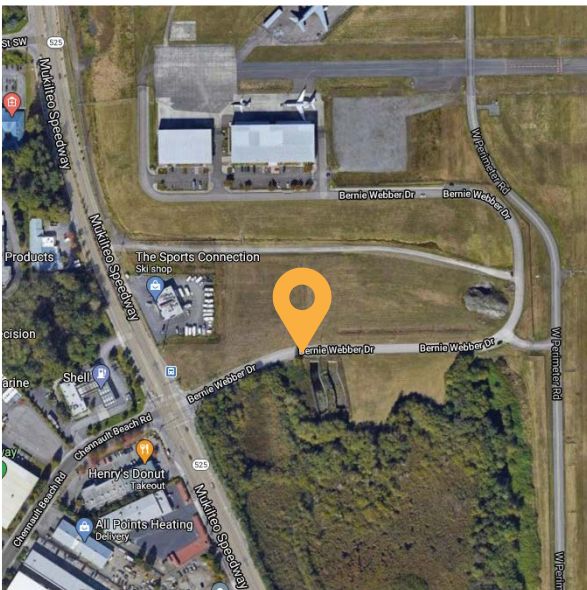
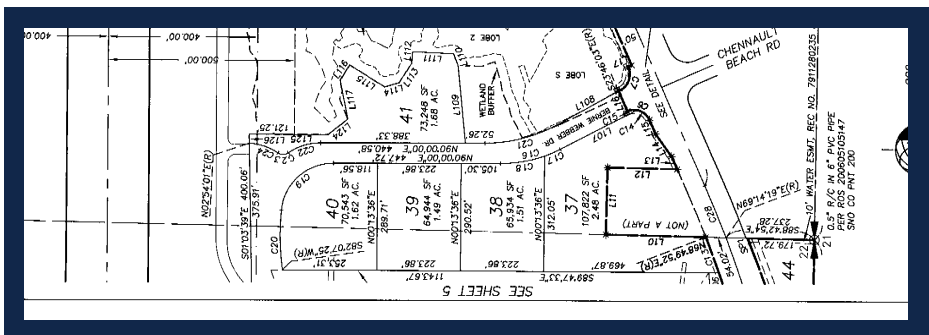




# Development Ready Sites Available For Land Lease



Lot 37	107,822
Lot 38	65,934
Lot 39	64,944
Lot 40	70,543
Lot 41	73,248
<b>Total</b>	<b>382,491 (8.78 Acres)</b>



**Bernie Webber Drive, Everett, WA 98204**

## Highlights:

- ✔ Improved Land Ready for Development
- ✔ Long Term Land Lease, Less Initial Capital Investment
- ✔ Zoned Light Industrial
- ✔ Potential for Commercial Rezoning
- ✔ Infrastructure - Road Access Already Built
- ✔ Infrastructure - Stormwater Facilities Already Built
- ✔ Easy Access to Public Transit: Airport, Bus and Ferry
- ✔ Strong Neighborhood Demographics w/ High Household Income
- ✔ On Mukilteo Speedway Boulevard (SR 525)
- ✔ Water & Sewer Connection Available

## Airport Information:

Paine Field is a vital commercial service airport and industrial park serving the Seattle metropolitan area, with over 590 based aircraft, 70 commercial tenants and serving 1.1 million passengers annually. Major tenants include the Boeing Company, United Technologies, ATS, Propeller Airports, Alaska Airlines, United Airlines, Flying Heritage & Combat Armor Museum, Historic Flight Foundation, Esterline/Korry Electronics, Collins Aerospace, Everett Community College, Edmonds Community College, Washington Aerospace Training & Research Center, and Future of Flight Aviation Center & Boeing Tour that attracts over 320,000 local, national and international visitors each year. Paine Field's Business Park is full of Boeing's Tier 1, 2 & 3 suppliers, making it an ideal home for aerospace manufacturing.

Lots 37-41 are on improved land ready for development. The sites are currently zoned Light Industrial with easy access to all utilities. Potential to be rezoned for commercial use and has easy access to worldwide travel through the new passenger terminal at Paine Field. Contact us for more detailed information on this great opportunity to build your facility here at Paine Field!

