

Monthly Noise Summary

PAINE FIELD AIRPORT • 3220 100TH ST SW • EVERETT, WA 98204
 NOISE HOTLINE: 425-353-2110 x1

JULY 2009

INSIDE THIS ISSUE:

Article	Page
Monthly Summary	1
Recording Noise Complaints	1
Monthly Flight Operations	
Noise Complaints Filed by Noise Quadrant	2
Monthly Operations Levels 2006-2009	
Noise Complaints	3 - 4

JULY SUMMARY

During July 2009, the airport office received noise related calls and emails from individuals in the surrounding communities. 118 complaints were regarding flight operations. No calls were received regarding engine trims.

Noise calls are received via telephone hotline (425-353-2110 x1) or through the airport web page noise complaint form (see *Online* below).

Upon receipt, all complaints are investigated. The FAA retains radar data for 3 days before providing it to the airport's AIRSCENE noise monitoring system. Airport staff uses the AIRSCENE data and other sources to help identify which operation generated the noise complaint.

The aircraft operator is then notified of the complaint and made aware of the airport's noise abatement program. Callers who specifically request to be contacted are called back.

Since FAA operations data is not released until the third week of the following month, the monthly noise summary report is posted online (see *Online* below) the fourth week of the following month.

Page 2 shows a graphic representing the 16 noise sub-quadrants located around Paine Field. The graphic also depicts where Paine Field's three noise monitors are located.

Caller Identification Codes are listed with each complaint on pages 3 & 4 to identify the individuals who made each call.

First time callers will be notified of their new ID# by mail, along with a one-time mailing of this monthly noise summary.

All of the aircraft operations listed on pages 3 and 4 are presumed to have originated or completed their flight at Paine Field.

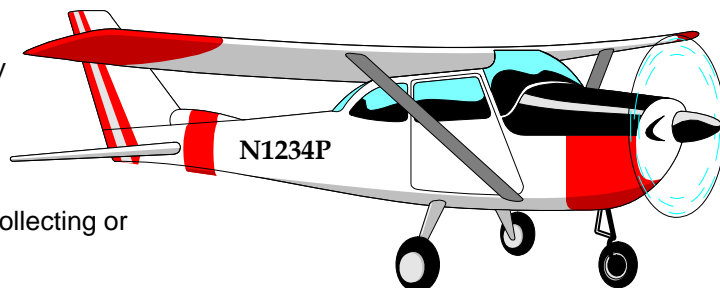
Online at www.painefield.com
 Noise Comment form: <http://www.painefield.com/noise/noiseform.html>
 Noise Summary Reports: <http://www.painefield.com/noise/noisesummary.html>
 Paine Field Happenings: <http://www.painefield.com/happenings/happenings.html>

RECORDING NOISE COMPLAINTS

Your noise calls are important to us. If there are flight operations taking place which are not ordinary, such as very low altitude operations, or repetitive overflights by jets, please do call in. However, if you see an ordinary aircraft taking off or landing, which seems to be abiding by reasonable standards, please be aware that the airport is here to accommodate aircraft. The airport is not collecting or tallying data to be used for any other purpose.

In filing a noise complaint, please include your name, address, phone number, Email & information pertaining to your concern. For those who have filed a noise complaint before, it is okay to just state your full name. The more complete your information, the better the chance of it being helpful in identifying the aircraft. Please make sure to include the date and time.

To help identify aircraft, please give a description of the aircraft (i.e. color, high-wing or low-wing, number of engines, and if possible please provide its "N" number) with the "N" number of N1234P. Direction of flight is also helpful.

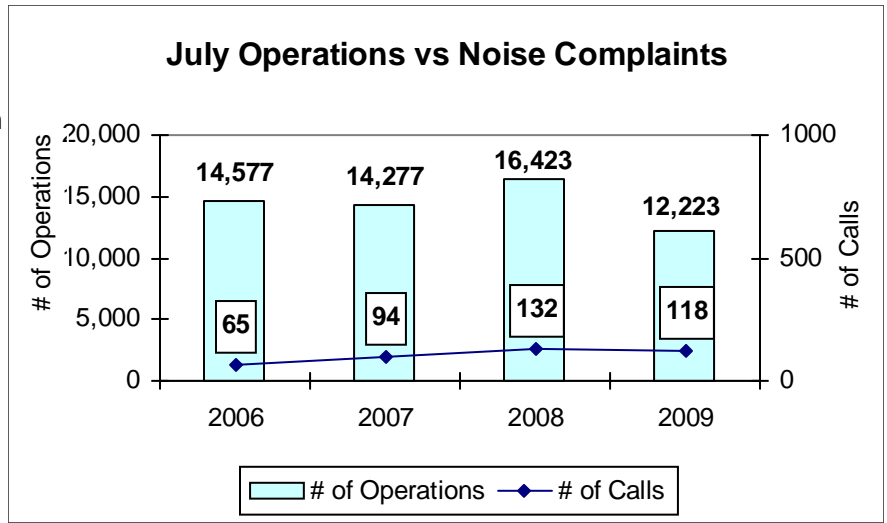


JULY 2009 MONTHLY FLIGHT OPERATIONS

During July 2009, the FAA Paine Field Air Traffic Control Tower recorded 12,223 flight operations. This is a 25% decrease in operations from July 2008, which had 16,423 operations.

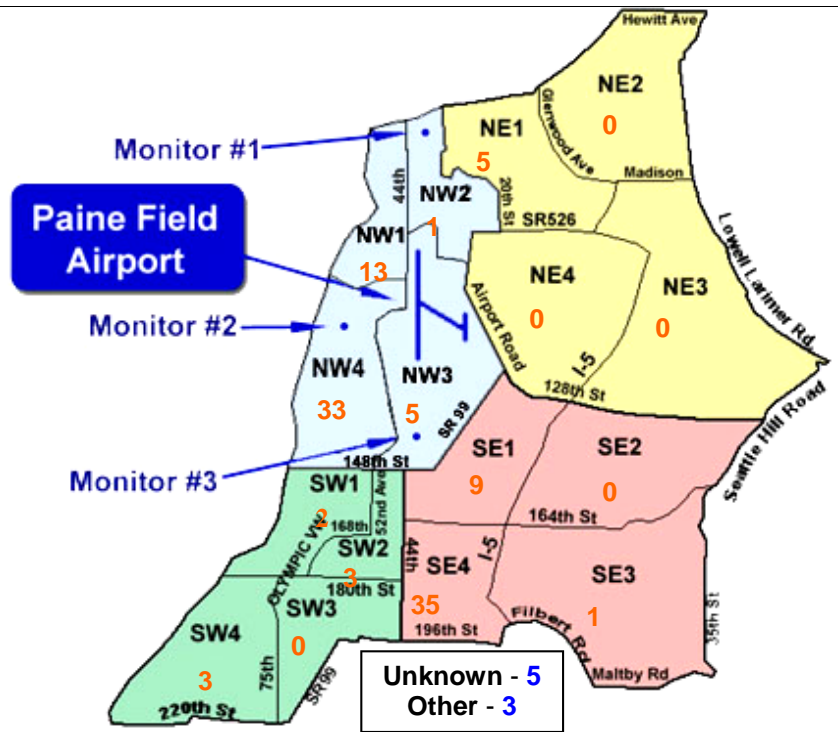
The four-year average number of flight operations for the month of July is 14,375. Total operations for July 2009 is 15% below the four-year average.

The graph shows operations compared to number of noise complaints for the years 2006, 2007, 2008 and 2009 during the month of July.

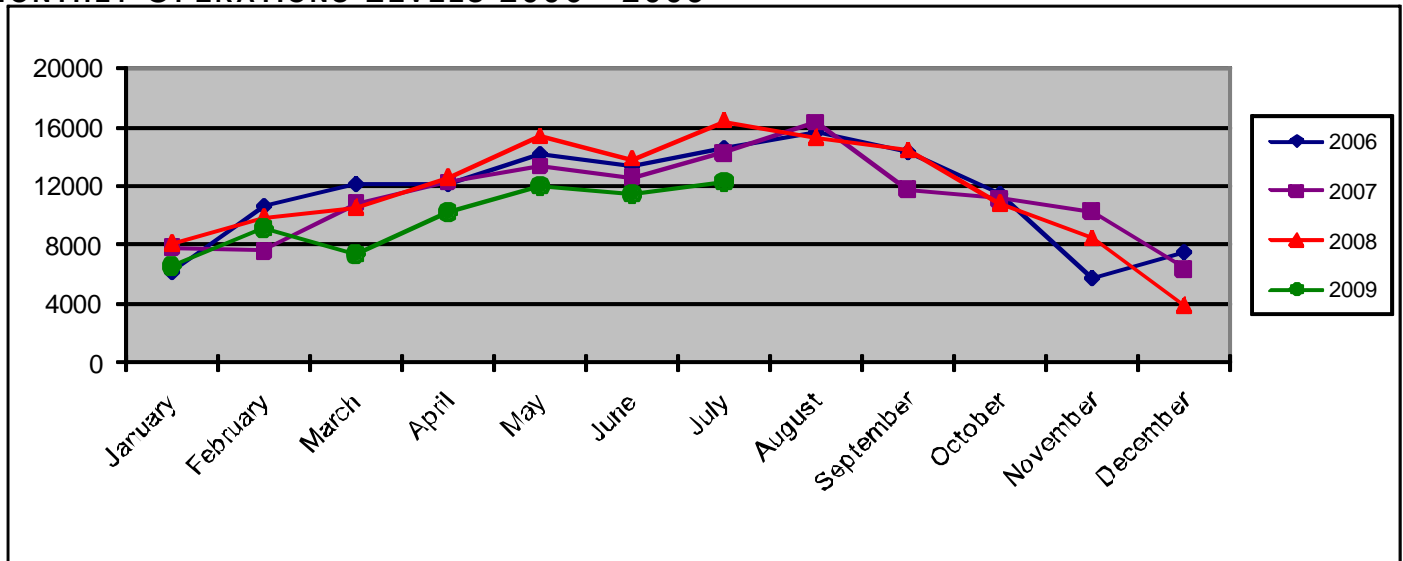


NOISE QUADRANTS

The graphic on the right depicts Paine Field's 16 noise quadrants and the locations of the three noise monitors. The red numbers within each quadrant represent how many calls were made from that quadrant in the month of July. "Unknown" represents complaints where the caller's quadrant was not identified. "Other" represents complaints from outside the four major quadrants.



MONTHLY OPERATIONS LEVELS 2006—2009



JULY 2009 NOISE COMPLAINTS

ID	Zone	Date	Time	N#	Aircraft	Activity	Traced To	Complaint
W980009	NW4	7/1/2009	08:45	UPS9359	757-200	ARR 34L	UPS/ATS	Noisy
S090005	NW1	7/1/2009	10:30	EIA406	747-LCF	DEP 34L	Evergreen Airlines/Boeing	Too Loud
E970000	SW2	7/1/2009	10:47	EIA461	747-LCF	ARR 34L	Evergreen Airlines/Boeing	Too Noisy
E070003	SE4	7/1/2009	11:50	BOE871	737-800	ARR 34L	Boeing	Inbound
E070003	SE4	7/1/2009	17:30	ASA9325	737-700	ARR 34L	Alaska	Inbound
Q920001	NW4	7/2/2009	01:40	SWA8502	737-700	DEP 34L	Southwest Airlines/ATS	Loud
E070003	SE4	7/2/2009	12:15	BOE266	767-300	ARR 34L	Boeing	Inbound
E070003	SE4	7/2/2009	15:25	BOE266	767-300	ARR 34L	Boeing	Inbound
W050009	NE1	7/3/2009	05:30	n/a	Could not be traced	n/a	could not be traced	Low, repetitive
K030003	UNK	7/3/2009	17:34	X	Insufficient Data from Caller	n/a	could not be traced	Noisy in the sky
P980000	NE1	7/3/2009	17:35	SKYBOLT1	EA-6B Prowler	In flight refueling	Navy	Dangerously low
R010002	NW2	7/6/2009	06:20	X	General Noise Complaint	Construction Noise	N/A	Too Early
E070003	SE4	7/7/2009	08:47	VENUS2	C-9	DEP 16R	Air Force/ATS	Low, Loud
S090008	NW4	7/7/2009	16:00	n/a	Alpha Jet	6 T&Gs 16R	Private Owner	Jet keeps flying over, Loud
D970007	NW4							
E070003	SE4							
D970007	NW4	7/8/2009	09:32	EIA5109	747-LCF	DEP 16R	Evergreen Airlines/Boeing	Outbound, Low
S050000	SE1	7/8/2009	09:35	N264TM	Cessna 150	ARR 16R	Private Owner	Too Low, Too close to each other
G090005	SW4							
S050000	SE1							
G090005	SW4	7/8/2009	10:15	BOE831	737-800	DEP 16R	Boeing	Low, Loud whistling sound
W980009	NW4	7/8/2009	11:12	BOE266	767-300	Low APP 16R	Boeing	Noisy
F930013	SE4	7/9/2009	10:04	EIA406	747-LCF	DEP 16R	Evergreen Airlines/Boeing	Noisy, Low
E070003	SE4	7/9/2009	14:25	BOE266	767-300	ARR 34L	Boeing	Inbound
N070001	UNK	7/10/2009	09:40	EIA406	747-LCF	DEP 16R	Evergreen Airlines/Boeing	Planes Felw over
E070003	SE4							
F930013	SE4	7/10/2009	10:37	BOE266	767-300	DEP 34L	Boeing	Noise
W980009	NW4	7/10/2009	12:19	EIA5180	747-LCF	ARR 34L	Evergreen Airlines/Boeing	Noisy
S050000	SE1							
S050000	SE1							
E070003	SE4	7/10/2009	13:00	BOE266	767-300	ARR 34L	Boeing	Inbound
W050009	NE1	7/11/2009	x	x	Insufficient Data from Caller	x	could not be traced	Loud Takeoff
G040001	NW4	7/11/2009	07:30	EIA307	747-LCF	DEP 34L	Evergreen Airlines/Boeing	Very Loud
B050020	NW1							
S080004	NW1							
Y060000	NE1							
E070003	SE4	7/11/2009	10:55	BOE574	777-200	DEP 16R	Boeing	Outbound
F930013	SE4	7/11/2009	11:09	EIA5161	747-LCF	ARR 34L	Evergreen Airlines/Boeing	Noisy
F930013	SE4	7/11/2009	11:11	BOE574	777-200	T & G 34L	Boeing	Noisy, Low
F930013	SE4							
W980009	NW4							
B090006	SW1	7/12/2009	00:12	SWA8705	737-700	DEP 16R	Southwest/ATS	Huge Jet
Q920001	NW4							
W970006	NW1	7/12/2009	07:30	x	Could not be traced	x	could not be traced	Low, loud
W970006	NW1	7/12/2009	18:30	x	Could not be traced	x	could not be traced	Very loud
S060003	NW4	7/13/2009	07:20	n/a	Could not be traced	x	could not be traced	Loud
E070003	SE4	7/14/2009	07:20	EIA418	747-LCF	DEP 16R	Evergreen Airlines/Boeing	Loud, Low
N070001	UNK	7/14/2009	10:25	EIA406	747-LCF	DEP 16R	Evergreen Airlines/Boeing	Plane went over house
C090002	NW1	7/14/2009	14:18	x	Could not be traced	x	could not be traced	Very Noise
W980009	NW4	7/14/2009	14:45	EIA	747-LCF	ARR 34L	Evergreen Airlines/Boeing	Noisy
D970007	NW4	7/14/2009	17:51	N47N	Robinson R-22	T & G 34R	Private Owner	Too Loud
S060003	NW4	7/14/2009	22:30	ASA9326	737-800	DEP 134L	Alaska Airlines/ATS	Loud
S060003	NW4	7/15/2009	07:20	EIA4181	747-LCF	DEP 16R	Evergreen Airlines/Boeing	Loud Jet
E070003	SE4	7/15/2009	09:30	ASA9321	737-500	DEP 34L	Alaska Airlines/ATS	Outbound
S980002	NW1	7/15/2009	12:22	n/a	FA-18	ARR 34L	Navy	Noisy
J930007	NE1	7/15/2009	12:25	n/a	FA-18	ARR 34L	Navy	Very Loud, Early Turn
Q920001	NW4	7/15/2009	14:25	BOE082	777-200	DEP 16R	Boeing	Really Loud
E070003	SE4							

JULY 2009 NOISE COMPLAINTS

ID	Zone	Date	Time	N#	Aircraft	Activity	Traced To	Complaint
E070003	SE4	7/15/2009	15:30	BOE082	777-200	ARR 34L	Boeing	Inbound
S980002	NW1	7/15/2009	17:28	n/a	Could not be traced	x	could not be traced	Noise
E070003	SE4	7/16/2009	09:40	n/a	Could not be traced	x	could not be traced	Outbound
F930013	SE4	7/16/2009	13:42	n/a	Could not be traced	x	could not be traced	Noise
W980009	NW4	7/16/2009	13:45	EIA5109	747-LCF	DEP 16R	Evergreen Airlines/Boeing	Noisy
G090005	SW4	7/16/2009	22:40	n/a	Could not be traced	x	could not be traced	Plane Flying over house. Too late
M090004	OTH	7/17/2009	04:45	CHOPPER7	Bell 206	Circling	KIRO TV	Circling and Hovering
B050020	NW1	7/17/2009	06:50	1MH	BE-C90 King Air	DEP 16R	Private Owner	Loud
F930013	SE4	7/17/2009	08:40	BOE969	777-300	DEP 16R	Boeing	Noise
N070001	UNK	7/17/2009	08:43	BOE017	777-300	DEP 34L	Boeing	Plane Flew over house
F930013	SE4	7/17/2009	09:01	BOE631	737-800	T & G 16R	Boeing	Noise
S050000	SE1							
E070003	SE4	7/17/2009	10:27	3GC	BE-C90 King Air	ARR 34L	Private	Inbound
S050000	SE1	7/17/2009	10:37	BOE969	777-300	T & G 34L	Boeing	Low, Loud
B050020	NW1							
E070003	SE4							
S050000	SE1							
E070003	SE4	7/17/2009	11:10	BOE017	777-300	ARR 34L	Boeing	Inbound
S050000	SE1							
D090003	NW4	7/18/2009	00:50	n/a	Could not be traced		could not be traced	Low, Out of flight path
S970004	SW2	7/18/2009	08:45	EIA5186	747-LCF	ARR 34L	Evergreen Airlines/Boeing	Too Loud for the weekend
B050020	NW1	7/18/2009	09:25	n/a	Could not be traced		could not be traced	Small plane, low, continuous
W050008	NW3	7/18/2009	11:51	n/a	Robinson R-22	Pattern Work 16T	Private Owner	Irritating
K080001	NW1	7/18/2009	12:45	FHC1	P-47 Thunderbolt	ARR 34L	Flying Heritage Collection	Flying over house
C050011	NW4							
N070001	UNK							
W970006	NW1							
G040001	NW4	7/18/2009	13:30	n/a	No Aircraft	x	could not be traced	Loud
F930013	SE4	7/18/2009	20:57	ASA9327	737-400	ARR 34L	Alaska Airlines/ATS	Inbound
G040001	NW4	7/19/2009	12:00	n/a	Insufficient Data from Caller	x	could not be traced	Low & Early
F930013	SE4	7/19/2009	15:07	n/a	Could not be traced	x	could not be traced	Noise
W980009	NW4	7/21/2009	11:55	NASA502	Gulfstream III	ARR 34L	NASA	Noisy
W980009	NW4	7/22/2009	11:00	EIA5186	747-LCF	DEP 16R	Evergreen Airlines/Boeing	Noisy
E070003	SE4							
D970007	NW4	7/22/2009	14:09	n/a	Could not be traced	x	could not be traced	Low
E070003	SE4	7/24/2009	10:00	BOE406	737-800	DEP 16R	Boeing	Outbound
S090007	OTH	7/24/2009	12:20	n/a	General Noise Complaint	x	could not be traced	Increased Noise
D970007	NW4	7/24/2009	16:25	EIA6141	747-LCF	ARR 34L	Evergreen Airlines/Boeing	Too Loud
F930013	SE4	7/26/2009	11:21	EIA5161	747-LCF	ARR 34L	Evergreen Airlines/Boeing	Loud
W980009	NW4	7/26/2009	14:25	BOE476	737-800	DEP 16R	Boeing	Noisy
Q920001	NW4	7/27/2009	x	n/a	Insufficient Data from Caller	x	could not be traced	Noise
S070008	NW3							
D970007	NW4	7/27/2009	07:25	BOE0A	777-200	DEP 16R	Boeing	Very Loud
W980009	NW4	7/27/2009	08:45	N89LS	Cessna Citation II	DEP 16R	Private Owner	Noisy
W980009	NW4	7/27/2009	10:29	EIA416	747-LCF	DEP 16R	Evergreen Airlines/Boeing	Noisy
E070003	SE4							
N050001	SE3							
R070000	NW3	7/27/2009	21:40	JUS196	C-9	DEP 16R	Department of Defense	Loud
R070000	NW3							
E970000	SW2	7/28/2009	15:30	AIC164	777-200	DEP 34L	Air India Cargo/Boeing	Low, Noisy
F930013	SE4	7/29/2009	09:14	EIA409	747-LCF	DEP 16R	Evergreen Airlines/Boeing	Noise
G040001	NW4	7/30/2009	16:15	n/a	Insufficient Data from Caller	x	could not be traced	Low
E070003	SE4	7/30/2009	16:35	BOE574	767-300	ARR 34L	Boeing	Outbound
F920008	OTH	7/30/2009	17:38	LAN574	767-300	ARR 34L	LAN Cargo	Loud
B090008	SW1							
E070003	SE4							
S050000	SE1	7/30/2009	19:35	EIA5121	747-LCF	ARR 34L	Evergreen Airlines/Boeing	Low, Loud
W980009	NW4	7/31/2009	13:23	BOE496	737-800	ARR 34L	Boeing	
J090001	NW3	7/31/2009	17:30	n/a	Robinson R-22	Pattern Work 34R	Private Owner	Annoying