

Monthly Noise Summary

PAINE FIELD AIRPORT • 3220 100TH ST SW • EVERETT, WA 98204
 NOISE HOTLINE: 425-353-2110 x1

JUNE 2009

INSIDE THIS ISSUE:

Article	Page
Monthly Summary	1
Recording Noise Complaints	1
Monthly Flight Operations	
Noise Complaints Filed by Noise Quadrant	2
Monthly Operations Levels 2006-2009	
Noise Complaints	3 - 4

JUNE SUMMARY

During June 2009, the airport office received noise related calls and emails from 124 individuals in the surrounding communities. 123 complaints were regarding flight operations. 1 call was received regarding an engine trim.

Noise calls are received via telephone hotline (425-353-2110 x1) or through the airport web page noise complaint form (see *Online* below).

Upon receipt, all complaints are investigated. The FAA retains radar data for 3 days before providing it to the airport's AIRSCENE noise monitoring system. Airport staff uses the AIRSCENE data and other sources to help identify which operation generated the noise complaint.

The aircraft operator is then notified of the complaint and made aware of the airport's noise abatement program. Callers who specifically request to be contacted are called back.

Since FAA operations data is not released until the third week of the following month, the monthly noise summary report is posted online (see *Online* below) the fourth week of the following month.

Page 2 shows a graphic representing the 16 noise sub-quadrants located around Paine Field. The graphic also depicts where Paine Field's three noise monitors are located.

Caller Identification Codes are listed with each complaint on pages 3 & 4 to identify the individuals who made each call.

First time callers will be notified of their new ID# by mail, along with a one-time mailing of this monthly noise summary.

All of the aircraft operations listed on pages 3 and 4 are presumed to have originated or completed their flight at Paine Field.

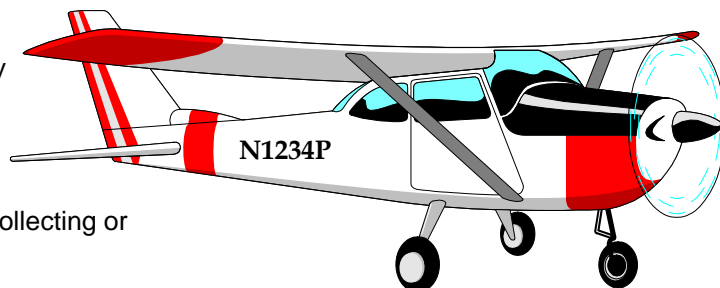
Online at www.painefield.com
 Noise Comment form: <http://www.painefield.com/noise/noiseform.html>
 Noise Summary Reports: <http://www.painefield.com/noise/noisesummary.html>
 Paine Field Happenings: <http://www.painefield.com/happenings/happenings.html>

RECORDING NOISE COMPLAINTS

Your noise calls are important to us. If there are flight operations taking place which are not ordinary, such as very low altitude operations, or repetitive overflights by jets, please do call in. However, if you see an ordinary aircraft taking off or landing, which seems to be abiding by reasonable standards, please be aware that the airport is here to accommodate aircraft. The airport is not collecting or tallying data to be used for any other purpose.

In filing a noise complaint, please include your name, address, phone number, Email & information pertaining to your concern. For those who have filed a noise complaint before, it is okay to just state your full name. The more complete your information, the better the chance of it being helpful in identifying the aircraft. Please make sure to include the date and time.

To help identify aircraft, please give a description of the aircraft (i.e. color, high-wing or low-wing, number of engines, and if possible please provide its "N" number) with the "N" number of N1234P. Direction of flight is also helpful.

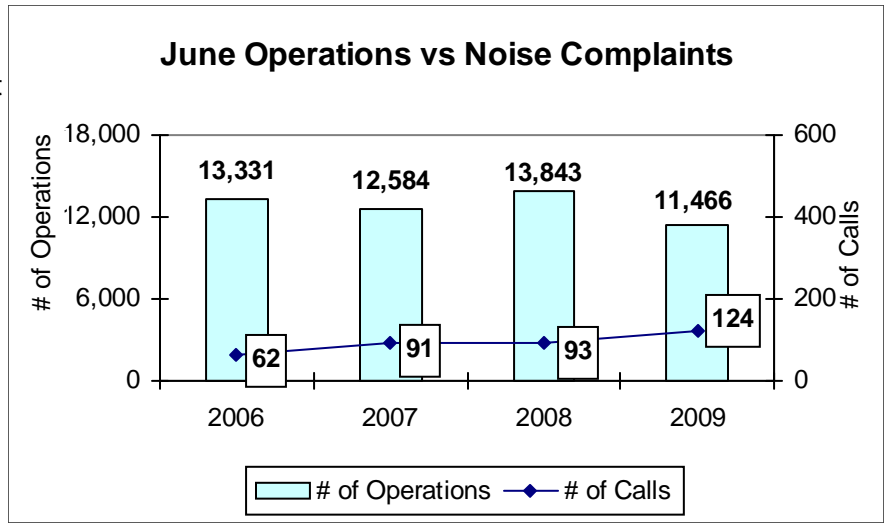


JUNE 2009 MONTHLY FLIGHT OPERATIONS

During June 2009, the FAA Paine Field Air Traffic Control Tower recorded 11,466 flight operations. This is a 17% decrease in operations from June 2008, which had 13,843 operations.

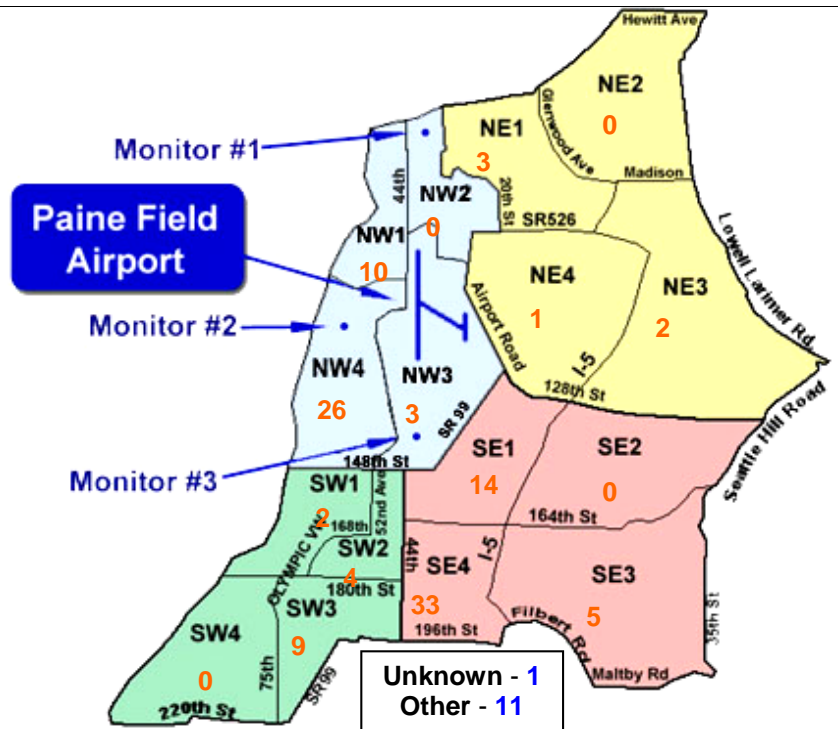
The four-year average number of flight operations for the month of June is 12,806. Total operations for June 2009 is 10% below the four-year average.

The graph shows operations compared to number of noise complaints for the years 2006, 2007, 2008 and 2009 during the month of June.

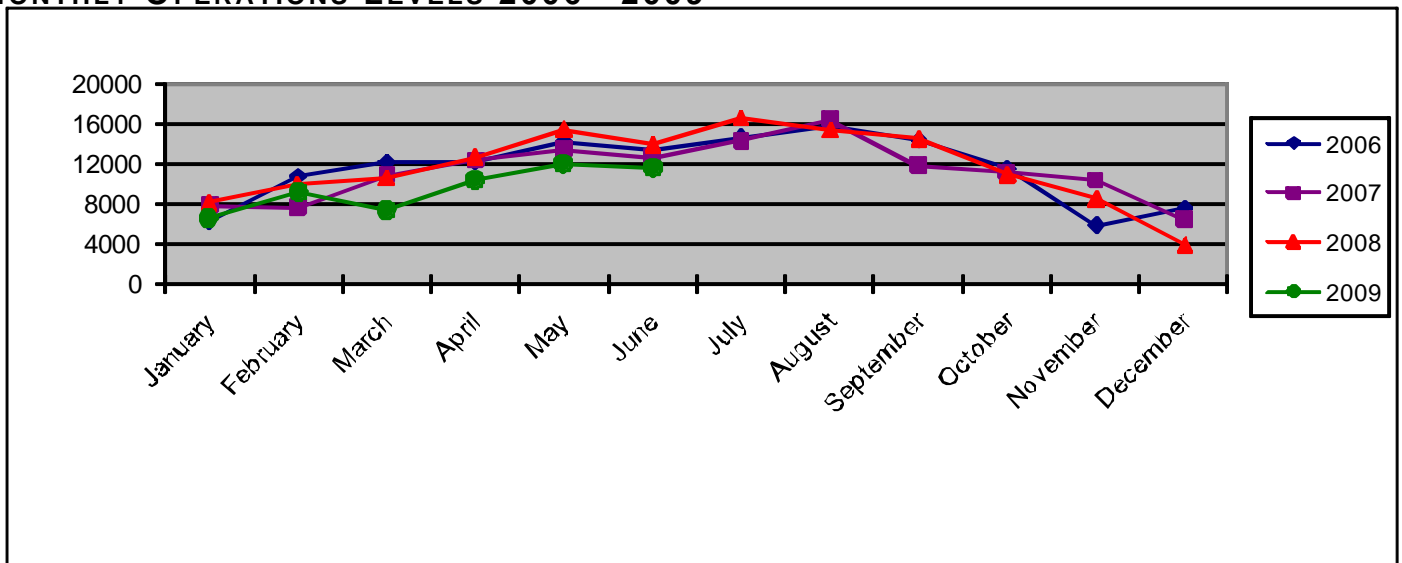


NOISE QUADRANTS

The graphic on the right depicts Paine Field's 16 noise quadrants and the locations of the three noise monitors. The red numbers within each quadrant represent how many calls were made from that quadrant in the month of June. "Unknown" represents complaints where the caller's quadrant was not identified. "Other" represents complaints from outside the four major quadrants.



MONTHLY OPERATIONS LEVELS 2006—2009



JUNE 2009 NOISE COMPLAINTS

ID	Zone	Date	Time	N#	Aircraft	Activity	Traced To	Complaint
E070002	SE4	6/1/2009	04:45	AIRLIFT 6	Agusta A-109	Transitioning	Airlift Northwest	Too Early
S050000	SE1	6/1/2009	10:16	EIA406	747-LCF	DEP 16R	Evergreen Airlines/Boeing	Low & Loud
I030001	OTH	6/1/2009	11:09	EIA461	747-LCF	ARR 34L	Evergreen Airlines/Boeing	Large plane, loud
S050000	SE1							
W980009	NW4	6/2/2009	08:52	EIA404	747-LCF	DEP 16R	Evergreen Airlines/Boeing	Noisy
S050000	SE1							
A090003	SW3	6/2/2009	09:45	BOE572	747-400	Low APP 16R	Boeing	Low, More Frequent, 500' above house
S050000	SE1	6/2/2009	10:46	BOE529	737-800	Low APP 16R	Boeing	Very low & loud
B050022	SW3	6/2/2009	13:40	BOE541	777-300	T&G 34L	Boeing	Rumbled the windows
E070003	SE4							
F930013	SE4	6/2/2009	15:25	NAVYJS266	C-9	T & G 16R	Navy/ATS	Noisy
W980009	NW4	6/2/2009	16:40	NAVYJS266	C-9	ARR 16R	Navy/ATS	Noisy
B050022	SW3	6/4/2009	23:00	N2397T	Piper PA-28 Cherokee	Pattern Work	Private Owner	Late Night, kept me up
B050022	SW3	6/5/2009	00:20	N9522S	Cessna 172	Pattern Work	Private Owner	Late Night, kept me up
B050022	SW3							
W980009	NW4	6/5/2009	09:30	BOE032	777-200	ARR 16R	Boeing	Noisy
F930013	SE4							
F930013	SE4	6/5/2009	09:33	DAL9901	777-200	DEP 16R	Delta Airlines/Boeing	Noise
F930013	SE4	6/5/2009	09:44	BOE541	777-300	DEP 34L	Boeing	Noise
F930013	SE4							
M090002	OTH	6/5/2009	10:37	BOE573	777-200	DEP 34L	Boeing	Increase in airplanes flying over
F930013	SE4	6/5/2009	11:09	EIA5121	747-LCF	ARR 16R	Evergreen Airlines/Boeing	Noise
F930013	SE4	6/6/2009	19:53	BOE935	737-800	Low APP 16R	Boeing	Noise
E070003	SE4	6/7/2009	09:55	EIA5109	747-LCF	DEP 16R	Evergreen Airlines/Boeing	Outbound, very loud, & low
S050000	SE1							
F930013	SE4							
N070001	UNK							
M090002	OTH	6/7/2009	17:30	BOE531	737-300	Low APP 16R	Boeing	Irritating
S050000	SE1	6/9/2009	22:27	N222GY	Gulfstream IV	ARR 34L	Private Owner	Low, Loud
S070011	SW3	6/10/2009	20:07	BOE553	777-300	ARR 34L	Boeing	Way too low and very loud
S090006	OTH	6/11/2009	06:43	n/a	n/a	N/A	could not be traced	Too Early.
E070003	SE4	6/11/2009	12:30	EJA605	Cessna Citation Excel	ARR 34L	Netjets Aviation	Inbound Over House
W980009	NW4	6/11/2009	16:10	BOE038	737-900	DEP 16R	Boeing	Noisy
W980009	NW4	6/11/2009	16:38	SWA8750	737-300	ARR 34L	Southwest Airlines/ATS	Noisy
N050001	SE3	6/11/2009	16:39	UAE286	777-200	DEP 34L	UAE	Loud
S090005	NW1							
E070003	SE4	6/11/2009	17:55	ASA9302	737-400	ARR 34L	Alaska Airlines/ATS	Over House
B040009	NW4	6/11/2009	19:30	GUARD285	UH-60 Huey	Pattern Work	Army	So loud, For 10 minutes now over the house
D050002	NW4							
F040004	NW4							
F040001	OTH							
F040001	OTH	6/12/2009	09:03	BOE572	747-400	Circling around, 6th time	Boeing	Loud, Low, Cirling out of flight path, Can't he find the airport? Too Low, Too Loud, Whistling Noise
F040001	OTH							
B050022	SW3							
E070003	SE4							
H050014	NE1							
S050000	SE1	6/12/2009	09:35	BOE012	777-200	DEP 16R	Boeing	Noisy
W980009	NW4							
B050017	SW3	6/12/2009	09:45	BOE572	747-400	Low APP 16R	Boeing	Very Loud, Low. Quiet down please
E070003	SE4							
S050000	SE1							
W980009	NW4							
B090007	OTH	6/12/2009	09:50	BOE572	747-400	T & G 16R	Boeing	200' over the house, Low
E070003	SE4							
W980009	NW4	6/12/2009	10:35	EIA5186	747-LCF	DEP 16R	Evergreen Airlines/Boeing	Noisy
E070003	SE4							
D970007	NW4							
N050001	SE3	6/12/2009	12:47	N7568T	Cessna 172	ARR 16R	Private Owner	Very Low over house
B090005	NW3	6/12/2009	14:00	BOE573	777-200	ARR 34L	Boeing	Too Loud

JUNE 2009 NOISE COMPLAINTS

ID	Zone	Date	Time	N#	Aircraft	Activity	Traced To	Complaint
S070005	SW2	6/12/2009	16:17	n/a	Could not be traced	N/A	could not be traced	Low, Loud
E070003	SE4	6/12/2009	16:45	ASA9301	737-900	ARR 34L	Alaska Airlines/ATS	Over House
H050014	NE1	6/12/2009	18:35	n/a	EA-6B Prowler	Low APP 16R	Boeing	Loud
E070003	SE4	6/13/2009	13:55	EIA4249	747-LCF	DEP 16R	Evergreen Airlines/Boeing	Outbound over house
G080001	NW4	6/13/2009	16:07	BOE544	737-800	T & G 16R	Boeing	Large Airplane Noise
G080001	NW4							
S050000	SE1	6/13/2009	18:26	ASA9303	737-400	ARR 34L	Alaska Airlines/ATS	Low, Loud
F970001	NW3	6/14/2009	00:14	n/a	n/a	n/a	could not be traced	Small Planes flying over
B090006	SW1	6/15/2009	00:30	n/a	Could not be traced	n/a	could not be traced	Noise From Paine Field
G090004	OTH							
H040004	SE4	6/15/2009	14:00	n/a	EA-6B Prowler	Missed 16R	Navy	Too Loud, Are they allowed?
S090005	NW1	6/15/2009	14:00	EIA409	747-LCF	DEP 34L	Evergreen Airlines/Boeing	Too Loud, Too Low, Shook the house
S090004	NW1	6/15/2009	18:30	n/a	EA-6B Prowler	Low APP 16R	Navy	Horribly Loud, Frightened children, Low, Loud, Too Fast, Sounded like it was going to hit the house
S040003	NW1							
D970007	NW4							
A050003	SE1							
W050009	NE1							
M980002	NW3							
K950001	NW1							
D970007	NW4	6/16/2009	14:02	n/a	Dassault Alpha Jet	DEP 16R	Private Owner	Very Loud
A050003	SE1	6/16/2009	15:57	n/a	EA-6B Prowler	Low APP 16R	Navy	Very Loud, Windows rattle, Too low, rattling over the house
D970007	NW4							
S070005	SW2							
J070001	SE1							
N050001	SE3							
E070003	SE4							
G090003	OTH							
E070003	SE4	6/16/2009	19:38	EIA409	747-LCF	ARR 34L	Evergreen Airlines/Boeing	Over the house
F930013	SE4	6/17/2009	09:20	n	No Aircraft	N/A	could not be traced	Noise
F930013	SE4	6/17/2009	10:18	EIA406	747-LCF	DEP 16R	Evergreen Airlines/Boeing	Noisy, Low
E070003	SE4							
N050001	SE3	6/17/2009	13:40	BOE572	747-400	DEP 16R	Boeing	Jet Flying overhead.
K040003	NW4	6/17/2009	15:00	BOE38F	T-38 Talon	2 Touch & Go 16R	Boeing	Low, Loud. Unnecessary
D970007	NW4	6/17/2009	15:54	n/a	No Aircraft	N/A	could not be traced	Loud
E070003	SE4	6/17/2009	16:45	BOE573	777-200	T & G 16R	Boeing	Outbound, over house
F930013	SE4	6/17/2009	19:40	BOE309	737-200	T & G 16R	Boeing	Noise, Low
F930013	SE4	6/18/2009	10:25	EIA406	747-LCF	DEP 16R	Evergreen Airlines/Boeing	Noise, extremely low
W980009	NW4							
S050000	SE1	6/18/2009	11:21	BOE572	747-400	DEP 16R	Boeing	Low, Loud
E070003	SE4	6/18/2009	18:14	VVRS116	C-9	DEP 16R	Navy/ATS	Over house, Excessively Loud
D970007	NW4							
E070003	SE4	6/19/2009	18:00	EIA461	747-LCF	ARR 34L	Evergreen Airlines/Boeing	Inbound Directly over house
P050004	NW4							
C090005	NE3	6/20/2009	01:74	SWA8503	737-200	ARR 16R	Southwest/ATS	Increase in Late night Operations
S070005	SW2	6/20/2009	13:17	n/a	No Aircraft	N/A	No Aircraft at this time	Low, Loud
D930020	NE3	6/21/2009	00:28	N/A	N/A	N/A	could not be traced	Whole family awoken
S050000	SE1	6/22/2009	19:49	ASA9002	737-400	ARR 34L	Alaska Airlines/ATS	Low, Loud
W980009	NW4	6/24/2009	16:49	BOE854	777-300	Dep 34L	Boeing	Noisy
G080001	NW4							
F920008	OTH	6/26/2009	10:27	EIA5186	747-LCF	ARR 34L	Evergreen Airlines/Boeing	Hideously Loud
S090005	NW1							
E070003	SE4	6/26/2009	15:32	BOE572	747-400	ARR 34L	Boeing	Directly Over the house
F060002	NE4	6/28/2009	06:39	n/a	n/a	Circling	could not be traced	Too Early, low
E070003	SE4	6/28/2009	10:05	BOE752	777-300	ARR 16R	Boeing	Directly over house
W980009	NW4	6/28/2009	10:08	BOE266	767-300	DEP 34L	Boeing	Noisy
B090008	SW1	6/28/2009	16:50	VDA1696	Antonov -124	ARR 34L	Volga Dnepr Air/Boeing	Too Low, Loud
E070003	SE4							
W980009	NW4							
M090003	NW1	6/29/2009	01:30	SWA8501	737	ARR 16R	Southwest/ATS	Too Late
M090003	NW1	6/29/2009	02:00	SWA8502	737-300	DEP 34L	Southwest/ATS	Too Late
S070011	SW3	6/29/2009	14:49	BOE574	777-200	ARR 34L	Boeing	Too Low
S090005	NW1	6/30/2009	10:57	SWA8750	737-800	DEP 34L	Southwest/ATS	Loud
W950001	SE3	6/30/2009	11:00	EIA4161	747-LCF	ARR 34L	Evergreen Airlines/Boeing	Too Low
E970000	SW2	6/30/2009	11:37	BOE831	737-800	ARR 34L	Boeing	Large, Noisy
S090005	NW1	6/30/2009	12:10	BOE082	777-200	DEP 34L	Boeing	Low, out of flight path.