

Monthly Noise Summary

PAINE FIELD AIRPORT • 3220 100TH ST SW • EVERETT, WA 98204
 NOISE HOTLINE: 425-353-2110 x1

APRIL 2009

INSIDE THIS ISSUE:

Article	Page
Monthly Summary	1
Recording Noise Complaints	
Monthly Flight Operations	
Noise Complaints Filed by Noise Quadrant	2
Monthly Operations Levels 2006-2009	
Noise Complaints	3 - 4

APRIL SUMMARY

During April 2009, the airport office received 98 noise related calls and emails from individuals in the surrounding communities. 98 complaints were regarding flight operations. No calls were received regarding engine trims.

Noise calls are received via telephone hotline (425-353-2110 x1) or through the airport web page noise complaint form (see *Online* below).

Upon receipt, all complaints are investigated. The FAA retains radar data for 3 days before providing it to the airport's AIRSCENE noise monitoring system. Airport staff uses the AIRSCENE data and other sources to help identify which operation generated the noise complaint.

The aircraft operator is then notified of the complaint and made aware of the airport's noise abatement program. Callers who specifically request to be contacted are called back.

Since FAA operations data is not released until the third week of the following month, the monthly noise summary report is posted online (see *Online* below) the fourth week of the following month.

Page 2 shows a graphic representing the 16 noise sub-quadrants located around Paine Field. The graphic also depicts where Paine Field's three noise monitors are located.

Caller Identification Codes are listed with each complaint on pages 3 & 4 to identify the individuals who made each call.

First time callers will be notified of their new ID# by mail, along with a one-time mailing of this monthly noise summary.

All of the aircraft operations listed on pages 3 and 4 are presumed to have originated or completed their flight at Paine Field.

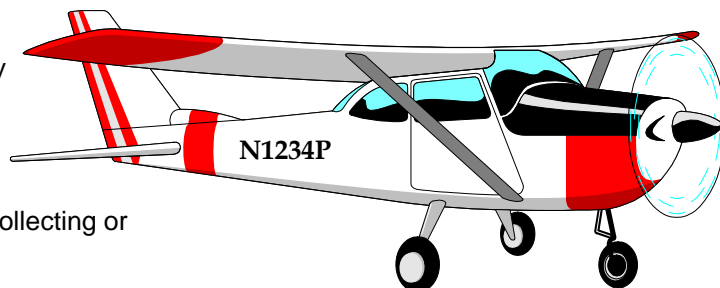
Online at www.painefield.com
 Noise Comment form: <http://www.painefield.com/noise/noiseform.html>
 Noise Summary Reports: <http://www.painefield.com/noise/noisesummary.html>
 Paine Field Happenings: <http://www.painefield.com/happenings/happenings.html>

RECORDING NOISE COMPLAINTS

Your noise calls are important to us. If there are flight operations taking place which are not ordinary, such as very low altitude operations, or repetitive overflights by jets, please do call in. However, if you see an ordinary aircraft taking off or landing, which seems to be abiding by reasonable standards, please be aware that the airport is here to accommodate aircraft. The airport is not collecting or tallying data to be used for any other purpose.

In filing a noise complaint, please include your name, address, phone number, Email & information pertaining to your concern. For those who have filed a noise complaint before, it is okay to just state your full name. The more complete your information, the better the chance of it being helpful in identifying the aircraft. Please make sure to include the date and time.

To help identify aircraft, please give a description of the aircraft (i.e. color, high-wing or low-wing, number of engines, and if possible please provide its "N" number) with the "N" number of N1234P. Direction of flight is also helpful.

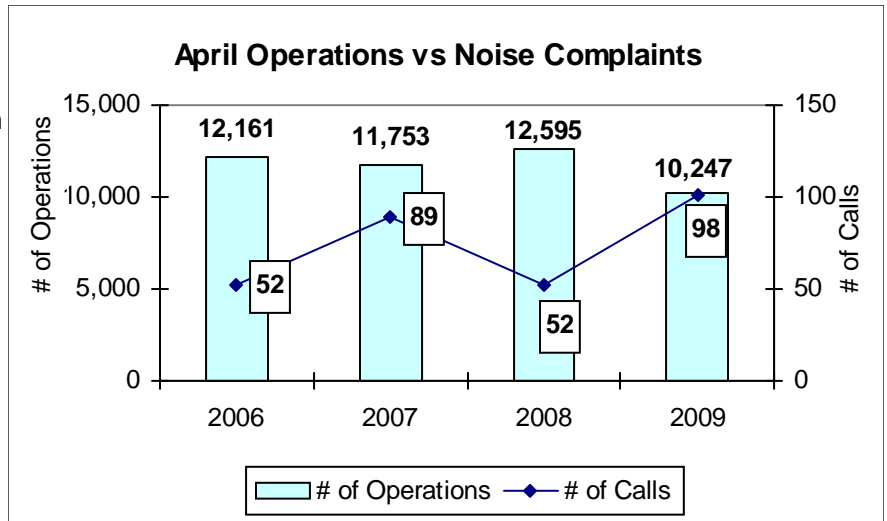


APRIL 2009 MONTHLY FLIGHT OPERATIONS

During April 2009, the FAA Paine Field Air Traffic Control Tower recorded 10,247 flight operations. This is a 19% decrease in operations from April 2008, which had 12,595 operations.

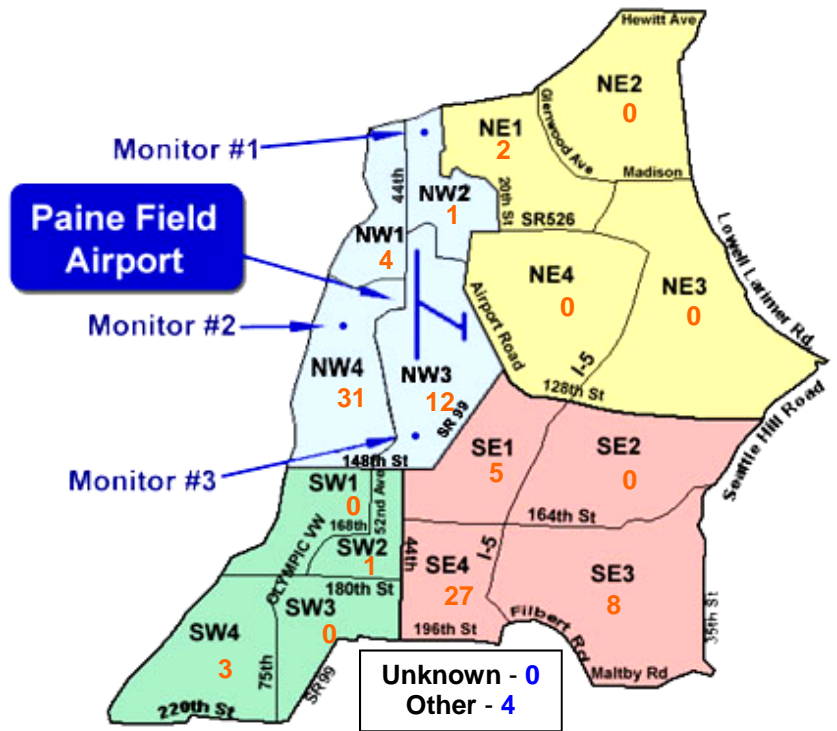
The four-year average number of flight operations for the month of April is 11,689. Total operations for April 2009 are 12% below the four-year average.

The graph shows operations compared to number of noise complaints for the years 2006, 2007, 2008 and 2009 during the month of April.

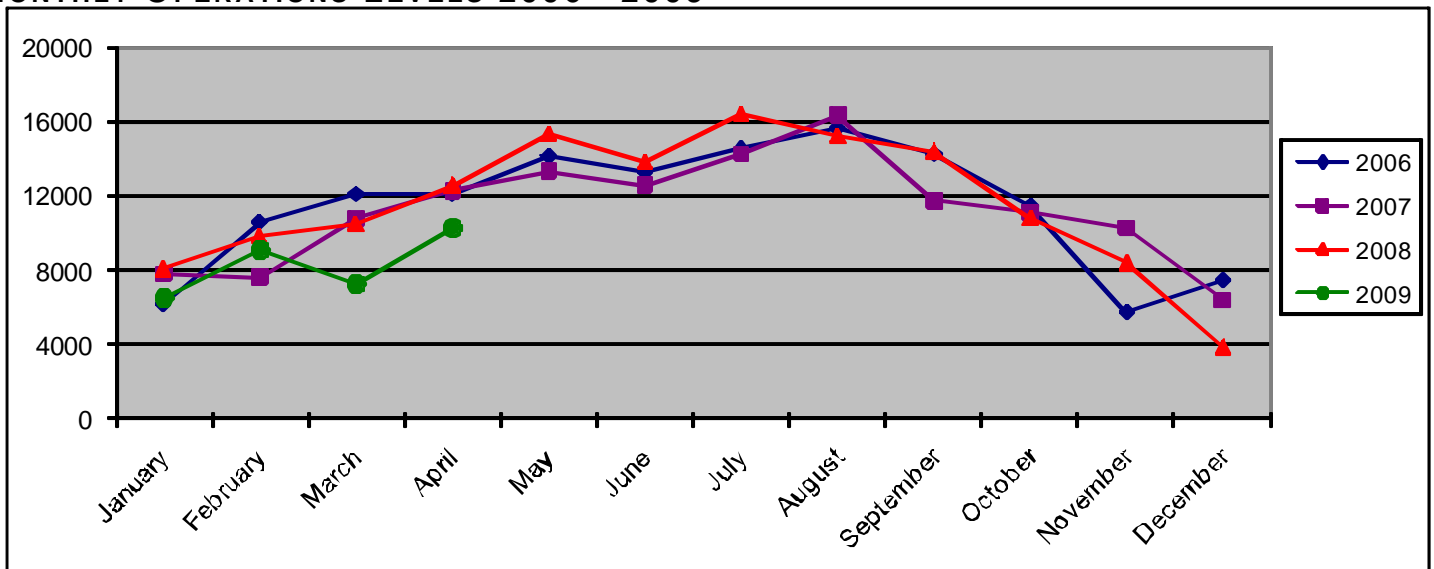


NOISE QUADRANTS

The graphic on the right depicts Paine Field's 16 noise quadrants and the locations of the three noise monitors. The red numbers within each quadrant represent how many calls were made from that quadrant in the month of April. "Unknown" represents complaints where the caller's quadrant was not identified. "Other" represents complaints from outside the four major quadrants.



MONTHLY OPERATIONS LEVELS 2006—2009



APRIL 2009 NOISE COMPLAINTS

ID	Zone	Date	Time	N#	Aircraft	Activity	Traced To	Complaint
S080005	NW2	4/1/2009	00:00	SWA8509	737-300	DEP 16R	Southwest/ATS	Jet, Loud, Late
W980009	NW4	4/2/2009	09:56	BOE016	777-200	DEP 16R	Boeing	Noisy
U090001	SE4	4/3/2009	09:31	DAL9935	MD-88	DEP 16R	Delta/ATS	Very Loud
E070003	SE4	4/3/2009	13:10	EIA461	747-LCF	ARR 34L	Evergreen Airlines/Boeing	Inbound, Loud & Low
M070001	SE4	4/3/2009	20:38	AMF497	PA-31 Piper Navajo	DEP 16R	Ameriflight	Low, Loud
F930013	SE4	4/3/2009	22:53	SWA8506	737-300	ARR 34L	Southwest/ATS	Low & Noise
E070003	SE4	4/4/2009	09:30	EIA5109	747-LCF	DEP 16R	Evergreen Airlines/Boeing	Outbound, Loud & Low
G040001	NW4	4/5/2009	12:00	n/a	General Noise Complaint	Pattern Work	Several loud planes	Many flying over house
E070003	SE4	4/5/2009	13:15	DAL9976	757-200	DEP 16R	Delta/ATS	Outbound over house
F930013	SE4	4/6/2009	09:20	BOE586	747-400	DEP 16R	Boeing	Noise
S050005	NW4	4/6/2009	12:17	BOE586	747-400	Low APP 16R	Boeing	Loud Jet, Low & Noisy
W980009	NW4							
S050005	NW4	4/6/2009	13:00	ASA9325	737-700	ARR 34L	Alaska Airlines/ATS	Loud low flying
G040001	NW4	4/6/2009	16:00	BOE981	777-300	ARR 16R	Boeing	Out of flight path, over house
G040001	NW4	4/6/2009	16:15	N80PL	Cub 180	ARR 16R	Private Owner	Loud, low, propeller
S050000	SE1	4/6/2009	19:09	BOE071	777-200	ARR 34L	Boeing	Low & Loud; inbound over house
E070003	SE4							
Q920001	NW4	4/7/2009	00:25	N69045	Cessna 152	DEP 34L	Private Owner	Prop noise, late
Q920001	NW4	4/7/2009	00:38	DAL9902	757-200	DEP 34L	Delta/ATS	Noise from airport
W980009	NW4	4/7/2009	13:10	EIA5161	747-LCF	ARR 34L	Evergreen Airlines/Boeing	Noisy
W980009	NW4	4/7/2009	16:00	EIA5141	747-LCF	ARR 34L	Evergreen Airlines/Boeing	Noisy, Low & Loud
S050000	SE1							
C980007	NW3							
S970004	SW2	4/7/2009	17:10	NAVYJU117	C-9	ARR 34L	Navy/ATS	Low, Inbound over house
E070003	SE4							
L060001	NW4	4/8/2009	03:32	SWA8505	737-300	DEP 16R	Southwest/ATS	Woke up, early
E070003	SE4	4/8/2009	09:58	BOE076	777-200	DEP 16R	Boeing	Outbound & Low
H090003	NW3							
F930013	SE4							
E070003	SE4	4/8/2009	10:02	NAVYJU117	C-9	DEP 16R	Navy/ATS	Outbound & Low; Woke Up, Noise
H090003	NW3							
H090003	NW3	4/8/2009	10:05	EIA406	747-LCF	DEP 16R	Evergreen Airlines/Boeing	Woke up, Noise; Outbound & Low
E070003	SE4							
A090001	NW1	4/9/2009	07:00	n/a	n/a	n/a	could not be traced	Loud
W980009	NW4	4/9/2009	08:48	ANA9397	767-300	DEP 16R	All Nippon Airways/Boeing	Noise
H090003	NW3	4/9/2009	10:22	EIA406	747-LCF	DEP 16R	Evergreen Airlines/Boeing	Loud, Low, & Noisy
F930013	SE4							
S050000	SE1							
W050008	NW3	4/9/2009	13:08	n/a	Helicopter	Pattern Work 16R	could not be traced	Loud
F930013	SE4	4/9/2009	14:02	CPA3331	747-400	DEP 16R	Cathay Pacific/Boeing	Noise, Low, Loud!
D970007	NW4	4/10/2009	17:08	EIA406	747-LCF	DEP 16R	Evergreen Airlines/Boeing	Too Loud
M970003	SW4	4/12/2009	08:58	ASA9302	737-400	DEP 16R	Alaska/ATS	Lots of traffic, noise
M970003	SW4	4/12/2009	09:36	EIA5109	747-LCF	DEP 16R	Evergreen Airlines/Boeing	Lots of traffic, noise; Outbound, Low & Loud
E070003	SE4							
M970003	SW4	4/12/2009	09:45	UPS9574	757-200	DEP 16R	UPS/ATS	Lots of traffic, Noise
V070000	NW3	4/14/2009	10:03	BOE017	777-200	DEP 34L	Boeing	Noise
V070000	NW3	4/14/2009	10:43	BOE571	747-400	DEP 34L	Boeing	Loud rumbling noise
E070003	SE4	4/14/2009	17:30	EIA5180	747-LCF	ARR 34L	Evergreen Airlines/Boeing	Inbound, Low & Loud
F930013	SE4	4/14/2009	19:44	EIA5121	747-LCF	ARR 34L	Evergreen Airlines/Boeing	Low and loud!
E070003	SE4	4/15/2009	10:25	CKS9427	747-200	DEP 16R	Kalitta Air	Outbound over house
V070000	NW3	4/16/2009	17:16	BOE981	777-300	DEP 16R	Boeing	Low rumbling
W980009	NW4	4/16/2009	17:38	BOE076	777-200	DEP 16R	Boeing	Noisy
V070000	NW3	4/16/2009	17:41	BOE076	777-200	T&G 16R	Boeing	Low, loud plane
E070003	SE4	4/16/2009	18:00	BOE981	777-300	Low APP 16R	Boeing	Outbound over house
E070003	SE4	4/17/2009	12:00	BOE072	777-200	DEP 16R	Boeing	Outbound over house
E070003	SE4	4/17/2009	12:05	BOE853	777-300	DEP 16R	Boeing	Outbound over house
W090002	OTH	4/18/2009	03:15	n/a	n/a	n/a	could not be traced	Propeller noise, small plane, Low flying
D060001	NW1	4/19/2009	22:23	ASA9325	737-700	DEP 34L	Alaska/ATS	Loud, disruptive
J970006	NW4	4/20/2009	04:13	SWA8503	737-700	DEP 34L	Southwest/ATS	Loud, very early
F930013	SE4	4/20/2009	12:52	BOE571	747-400	DEP 34L	Boeing	Noise, Low
F030001	NW4	4/20/2009	22:20	SWA8500	737-700	ARR 34L	Southwest/ATS	Loud
F030001	NW4	4/20/2009	23:40	SWA8501	737-300	DEP 34L	Southwest/ATS	Loud
P080002	SE3	4/21/2009	11:45	n/a	n/a	Circled around house	could not be traced	Plane buzzing around for hours
P080002	SE3	4/21/2009	12:20	n/a	n/a	Circled around house	could not be traced	Plane buzzing, noise

APRIL 2009 NOISE COMPLAINTS

ID	Zone	Date	Time	N#	Aircraft	Activity	Traced To	Complaint
S060003	NW4	4/21/2009	20:54	EIA461	747-LCF	ARR 34L	Evergreen Airlines/Boeing	Low & Loud take off
F930013	SE4							
W980009	NW4	4/22/2009	10:38	EIA5186	747-LCF	ARR 34L	Evergreen Airlines/Boeing	Noisy; Inbound too low
E070003	SE4							
B090002	OTH	4/23/2009	05:45	N384TV	Bell 407	Transitioning	Komo 4 News	Loud, early, excessive
Y970001	NE1	4/23/2009	12:45	NAVYJT051	C-9	DEP 16R	Navy/ATS	Way too loud
Y970001	NE1	4/23/2009	14:22	NAVYJT051	C-9	Low APP 16R	Navy/ATS	Loud
W980009	NW4	4/23/2009	15:31	NAVJT051	C-9	DEP 16R	Navy/ATS	Noisy
M090001	SE3	4/23/2009	23:15	AIRLIFT 6	Agusta A-109	Transitioning	Airlift Northwest	Loud, low, sound
S060003	NW4	4/24/2009	00:30	EIA406	747-LCF	DEP 16R	Evergreen Airlines/Boeing	Super Loud, Late; Loud, low, large sound
M090001	SE3							
F920008	OTH	4/24/2009	12:41	BOE691	737-700	T&G 16R	Boeing	Too Loud!
S050000	SE1	4/24/2009	14:49	BOE480	747-400	DEP 16R	Boeing	Low & Loud
N050001	SE3	4/25/2009	01:08	AIRLIFT 6	Agusta A-109	Transitioning	Airlift Northwest	Shook house
F930013	SE4	4/25/2009	09:26	EIA5109	747-LCF	DEP 16R	Evergreen Airlines/Boeing	Noise, low, and too loud
D970007	NW4							
S050007	NW4							
F030001	NW4	4/27/2009	05:43	N222Y	Gulfstream IV	DEP 34L	Private Owner	Too loud, too early
N050001	SE3	4/27/2009	10:48	CHOPPER 7	Bell 407	Orbiting	KIRO TV	Low over house
N050001	SE3	4/27/2009	11:27	AIRLIFT 6	Agusta A-109	Transitioning	Airlift Northwest	Low pass twice over house, loud
S060003	NW4	4/27/2009	11:35	n/a	n/a	n/a	could not be traced	Large Jet
W980009	NW4	4/27/2009	15:07	BOE521	737-800	T&G 16R	Boeing	Noisy
D970007	NW4	4/28/2009	15:15	EIA409	747-LCF	DEP 16R	Evergreen Airlines/Boeing	Too Loud & Low
S050000	SE1							
M040003	NW1	4/29/2009	1:22	SWA8501	737-500	DEP 16R	Southwest/ATS	Late night, loud, woken up, too low
B970006	NW3							
F030001	NW4							
W980009	NW4	4/29/2009	12:42	EIA461	747-LCF	ARR 34L	Evergreen Airlines/Boeing	Noisy
F920008	OTH	4/29/2009	15:16	BOE784	777-200	DEP 34L	Boeing	Hideously Loud, Windows Rattled
C090002	NW1	4/29/2009	23:16	N2397T	Piper PA-28 Cherokee	T&G 34L	Private Owner	Loud engine noise, late
F930013	SE4	4/30/2009	12:38	BOE806	777-300	ARR 34L	Boeing	Noise Low
S060003	NW4	4/30/2009	23:15	SWA8501	737-300	ARR 16R	Southwest/ATS	Loud Jet, too late
B970006	NW3							

Snohomish County Airport—Paine Field
3220 100th St. SW, Suite A