

Monthly Noise Summary

PAINE FIELD AIRPORT • 3220 100TH ST SW • EVERETT, WA 98204
NOISE HOTLINE: 425-353-2110 x1

DECEMBER 2008

INSIDE THIS ISSUE:

Article	Page
Monthly Summary Recording Noise Complaints	1
Monthly Flight Operations Noise Complaints Filed by Noise Quadrant	2
Noise Complaints	3
Monthly Operations Levels 2005-2008	4

DECEMBER SUMMARY

During December 2008, the airport office received 31 noise related calls and emails from individuals in the surrounding communities. 30 complaints were regarding flight operations, 1 was regarding an engine trim.

Noise calls are received via telephone hotline (425-353-2110 x1) or through the airport web page noise complaint form (see *Online* below).

Upon receipt, all complaints are investigated. The FAA retains radar data for 3 days before providing it to the airport's AIRSCENE noise monitoring system. Airport staff uses the AIRSCENE data and other sources to help identify which operation generated the noise complaint.

The aircraft operator is then notified of the complaint and made aware of the airport's noise abatement program. Callers who specifically request to be contacted are called back.

Since FAA operations data is not released until the third week of the following month, the monthly noise summary report is posted online (see *Online* below) the fourth week of the following month.

Page 2 shows a graphic representing the 16 noise sub-quadrants located around Paine Field. The graphic also depicts where Paine Field's three noise monitors are located.

Caller Identification Codes are listed with each complaint on page 3 to identify the individuals who made each call. First time callers will be notified of their new ID# by phone or email.

All of the aircraft operations listed on page 3 are presumed to have originated or completed their flight at Paine Field.

Online at www.paineairport.com

Noise Comment form: <http://www.paineairport.com/noise/noiseform.html>

Noise Summary Reports: <http://www.paineairport.com/noise/noisesummary.html>

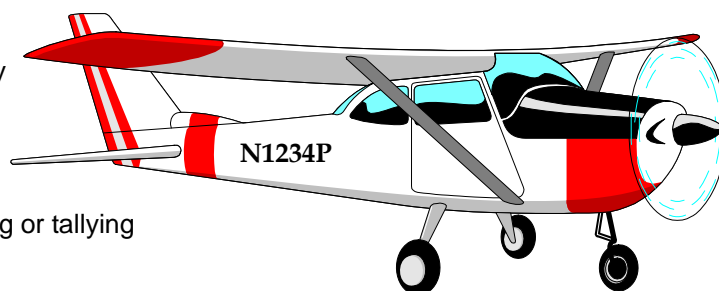
Paine Field Happenings: <http://www.paineairport.com/happenings/happenings.html>

RECORDING NOISE COMPLAINTS

Your noise calls are important to us. If there are flight operations taking place which are not ordinary, such as very low altitude operations, or repetitive overflights by jets, please do call in. However, if you see an ordinary aircraft taking off or landing, which seems to be abiding by reasonable standards, please be aware that the airport is here to accommodate aircraft. The airport is not collecting or tallying data to be used for any other purpose.

In filing a noise complaint, please include your name, address, phone number, Email & information pertaining to your concern. For those who have filed a noise complaint before, it is okay to just state your full name. The more complete your information, the better the chance of it being helpful in identifying the aircraft. Please make sure to include the date and time.

To help identify aircraft, please give a description of the aircraft (i.e. color, high-wing or low-wing, number of engines, and if possible please provide its "N" number) with the "N" number of N1234P. Direction of flight is also helpful.

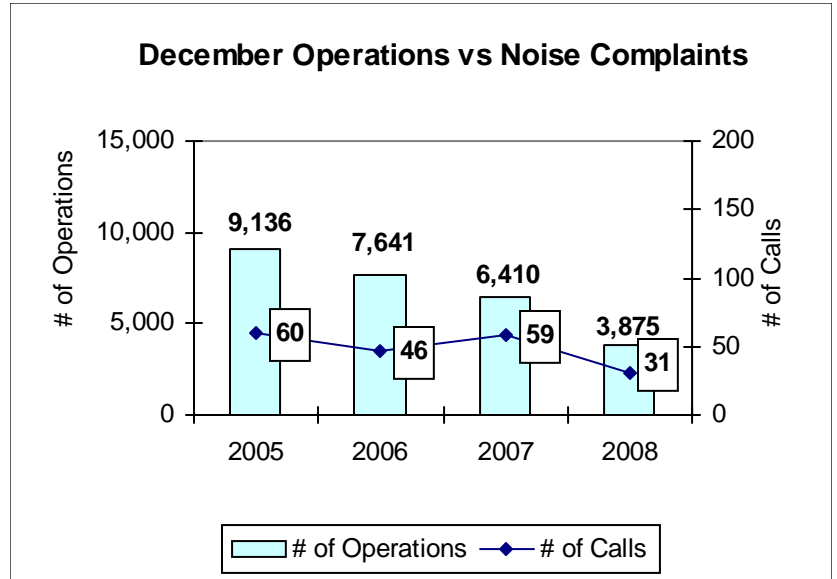


DECEMBER 2008 MONTHLY FLIGHT OPERATIONS

During December 2008, the FAA Paine Field Air Traffic Control Tower recorded 3,875 flight operations. This is a 40% decrease in operations from December 2007, which had 6,410 operations. The large reduction in operations for the month of December is primarily due to the record snow storms which hit the area.

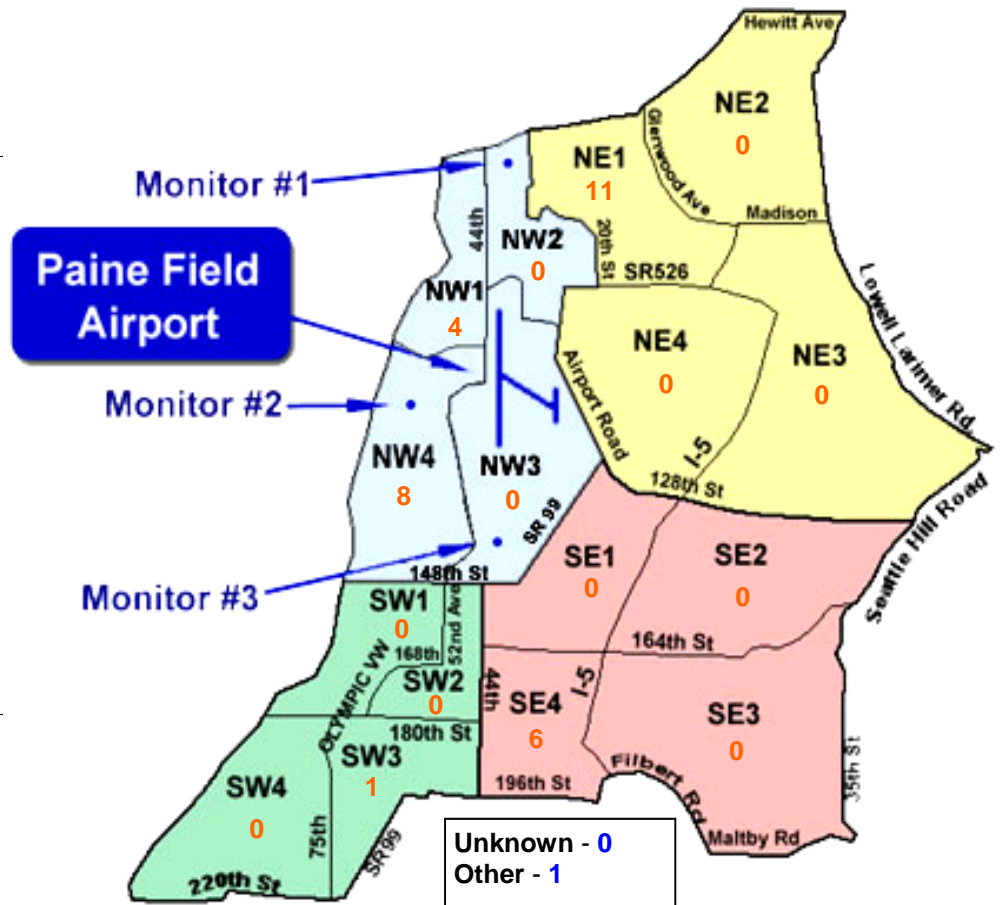
The four-year average number of flight operations for the month of December is 6,766. Total operations for December 2008 are 43% below the four-year average.

The graph shows operations compared to number of noise complaints for the years 2005, 2006, 2007 and 2008 during the month of December.



NOISE QUADRANTS

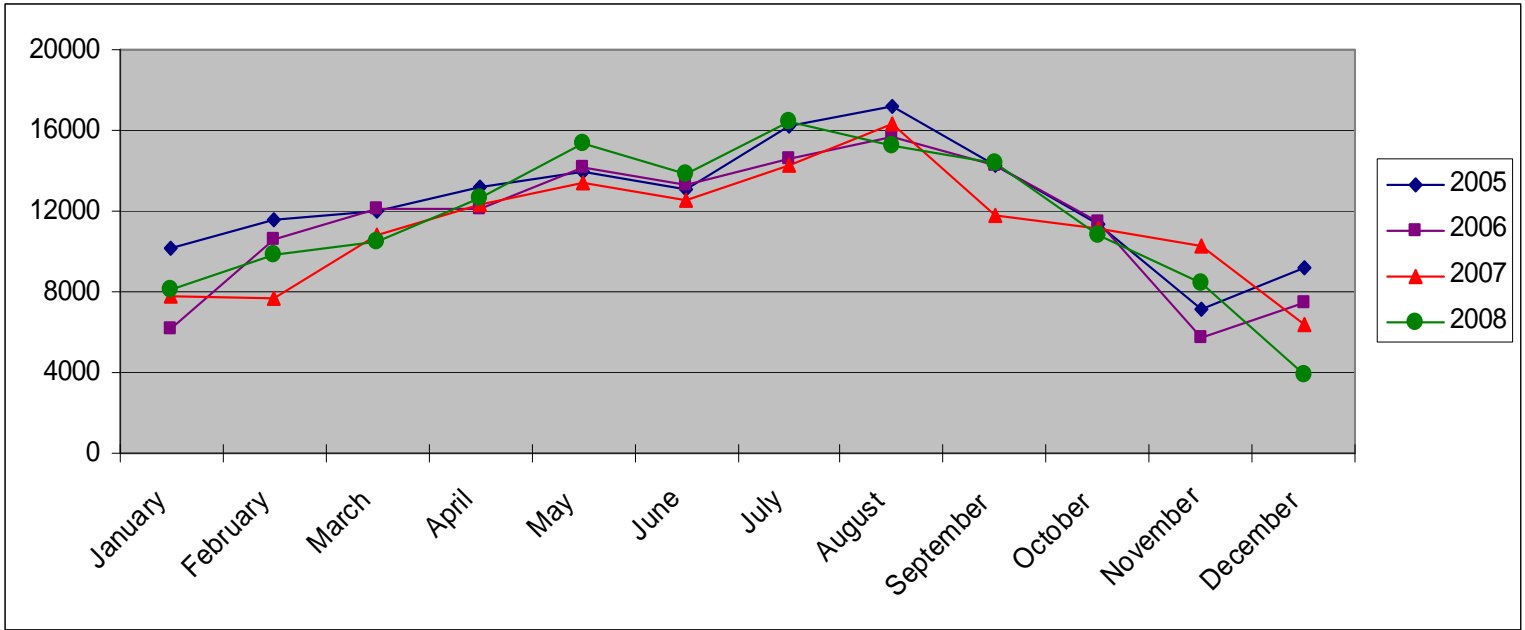
The graphic on the right depicts Paine Field's 16 noise quadrants and the locations of the three noise monitors. The red numbers within each quadrant represent how many calls were made from that quadrant in the month of December. "Unknown" represents complaints where the caller's quadrant was not identified. "Other" represents complaints from outside the four major quadrants.



DECEMBER 2008 NOISE COMPLAINTS

ID	Zone	Date	Time	N#	Aircraft	Activity	Traced To	Complaint
W980009	NW4	12/1/2008	11:20	BOE233	737-700	T&G 16R	Boeing	Noisy
H010003	NE1	12/2/2008	10:14	EJA752	Gulfstream G200	ARR 16R	Netjets Aviation	Loud
H010003	NE1	12/2/2008	10:30	n/a	n/a	n/a	could not be traced	Loud
W050009	NE1	12/3/2008	07:47	BOE479	747-400	DEP 34L	Boeing	Loud and Obnoxious
W050009	NE1	12/3/2008	08:07	BOE938	777-300	DEP 34L	Boeing	Loud Large Jet
H010003	NE1	12/3/2008	10:38	EIA469	747-LCF	DEP 34L	Evergreen Airlines/Boeing	Loud
L920006	NW4	12/3/2008	18:00	N181W	Bell 212	ARR 34L	Private Owner	Loud, shook the house
H010003	NE1	12/4/2008	10:36	BOE595	777-300	DEP 34L	Boeing	Loud
W050009	NE1	12/4/2008	13:06	BOE852	777-300	ARR 16R	Boeing	Really Loud
W050009	NE1	12/4/2008	13:15	BOE595	777-300	ARR 16R	Boeing	Loud Large Jet
E070003	SE4	12/5/2008	15:37	EIA449	747-LCF	DEP 16R	Evergreen Airlines/Boeing	Flight outbound over house
S080006	NW1	12/6/2008	05:00	n/a	n/a	engine trim	could not be traced	Loud and Late
P070000	NW1	12/6/2008	08:15	BOE938	777-300	DEP 16R	Boeing	General Complaint
G050008	SW3	12/6/2008	09:16	BOE479	747-400	DEP 16R	Boeing	Low, loud
P070000	NW1							
W980009	NW4	12/6/2008	13:46	BOE002	777-200	T&G 16R	Boeing	Noisy
T080001	NW4	12/7/2008	00:30	n/a	n/a	n/a	could not be traced	Noise
H080006	OTH	12/10/2008	15:47	BOE805	777-300	Missed APP 16R	Boeing	Low
W970000	NW4	12/13/2008	08:30	EIA459	747-LCF	DEP 16R	Evergreen Airlines/Boeing	Large and Loud
E070003	SE4	12/13/2008	08:35	BOE595	777-300	DEP 34L	Boeing	Flight outbound, directly in front of house
F930013	SE4	12/13/2008	08:40	EIA469	747-LCF	DEP 16R	Evergreen Airlines/Boeing	Low and Noise; Flight outbound in front of house
E070003								
W980009	NW4	12/13/2008	10:58	NAVYJS198	C-9	ARR 16R	Navy/ATS	Noisy
D060001	NW1	12/15/2008	23:33	SWA8513	737-300	DEP 34L	Southwest/ATS	Loud
F930013	SE4	12/18/2008	23:58	n/a	n/a	n/a	could not be traced	Noise
W980009	NW4	12/19/2008	16:00	BOE875	777-300	ARR 34L	Boeing	Noisy
F930013	SE4	12/26/2008	15:37	BOE630	737-700	LOW APP 16R	Boeing	Noise
W980009	NW4	12/28/2008	12:44	BOE922	767-300	DEP 34L	Boeing	Noisy
W050009	NE1	12/28/2008	13:35	BOE310	737-800	T&G 16R	Boeing	Excessively Loud
W050009	NE1	12/28/2008	13:49	BOE310	737-800	LOW APP 16R	Boeing	Loud, large, white jet
H050014	NE1	12/29/2008	11:50	BOE922	767-300	T&G 16R	Boeing	Loud and large

MONTHLY OPERATIONS LEVELS 2005—2008



Snohomish County Airport—Paine Field
3220 100th St. SW Suite A
Everett, WA 98204