

Monthly Noise Summary

PAINE FIELD AIRPORT • 3220 100TH ST SW • EVERETT, WA 98204
NOISE HOTLINE: 425-353-2110 x1

NOVEMBER 2008

INSIDE THIS ISSUE:

Article	Page
Monthly Summary Recording Noise Complaints	1
Monthly Flight Operations Noise Complaints Filed by Noise Quadrant	2
Noise Complaints	3
Monthly Operations Levels 2005-2008	4

NOVEMBER SUMMARY

During November 2008, the airport office received 35 noise related calls and emails from individuals in the surrounding communities. All 35 complaints were regarding flight operations.

Noise calls are received via telephone hotline (425-353-2110 x1) or through the airport web page noise complaint form (see *Online* below).

Upon receipt, all complaints are investigated. The FAA retains radar data for 3 days before providing it to the airport's AIRSCENE noise monitoring system. Airport staff uses the AIRSCENE data and other sources to help identify which operation generated the noise complaint.

The aircraft operator is then notified of the complaint and made aware of the airport's noise abatement program. Callers who specifically request to be contacted are called back.

Since FAA operations data is not released until the third week of the following month, the monthly noise summary report is posted online (see *Online* below) the fourth week of the following month.

Page 2 shows a graphic representing the 16 noise sub-quadrants located around Paine Field. The graphic also depicts where Paine Field's 3 noise monitors are located.

Caller Identification Codes are listed with each complaint on page ## to identify the individuals who made each call. First time callers will be notified of their new ID# by phone or email.

Some of the aircraft operations listed on page ## are presumed to have originated or completed their flight at Paine Field.

Online at www.paineairport.com

Noise Comment form: <http://www.paineairport.com/noise/noiseform.html>

Noise Summary Reports: <http://www.paineairport.com/noise/noisesummary.html>

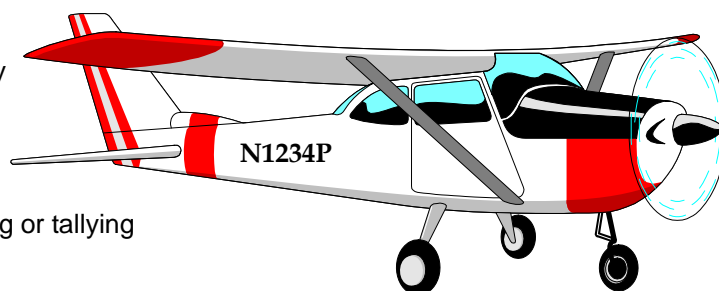
Paine Field Happenings: <http://www.paineairport.com/happenings/happenings.html>

RECORDING NOISE COMPLAINTS

Your noise calls are important to us. If there are flight operations taking place which are not ordinary, such as very low altitude operations, or repetitive overflights by jets, please do call in. However, if you see an ordinary aircraft taking off or landing, which seems to be abiding by reasonable standards, please be aware that the airport is here to accommodate aircraft. The airport is not collecting or tallying data to be used for any other purpose.

In filing a noise complaint, please include your name, address, phone number, **Email** & information pertaining to your concern. For those who have filed a noise complaint before, it is okay to just state your full name. The more complete your information, the better the chance of it being helpful in identifying the aircraft. Please make sure to include the date and time.

To help identify aircraft, please give a description of the aircraft (i.e. color, high-wing or low-wing, number of engines, and if possible please provide its "N" number) with the "N" number of N1234P. Direction of flight is also helpful.

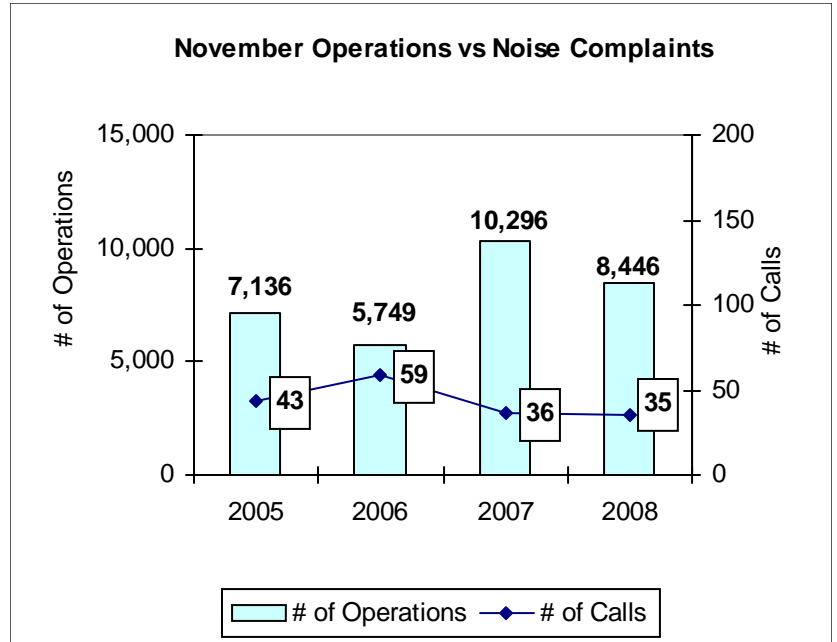


NOVEMBER 2008 MONTHLY FLIGHT OPERATIONS

During November 2008, the FAA Paine Field Air Traffic Control Tower recorded 8,446 flight operations. This is a 18% decrease in operations from November 2007, which had 10,296 operations.

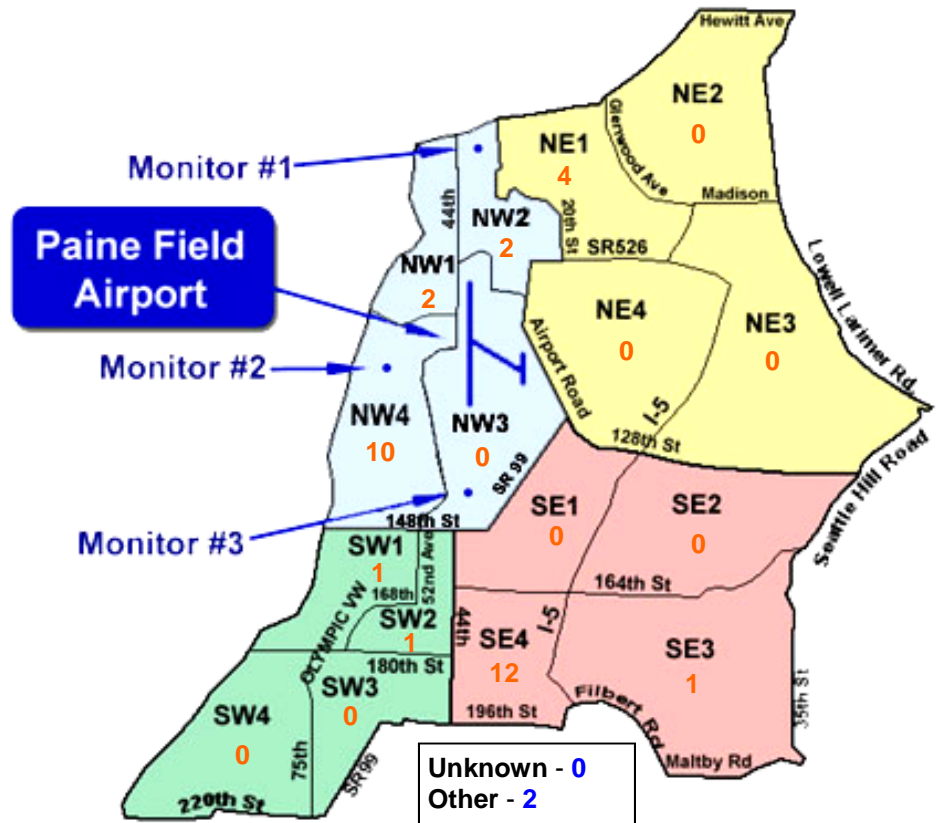
The four-year average number of flight operations for the month of November is 7,907. Total operations for November 2008 are 7% above the four-year average.

The graph shows operations compared to number of noise complaints for the years 2005, 2006, 2007 and 2008 during the month of November.



NOISE QUADRANTS

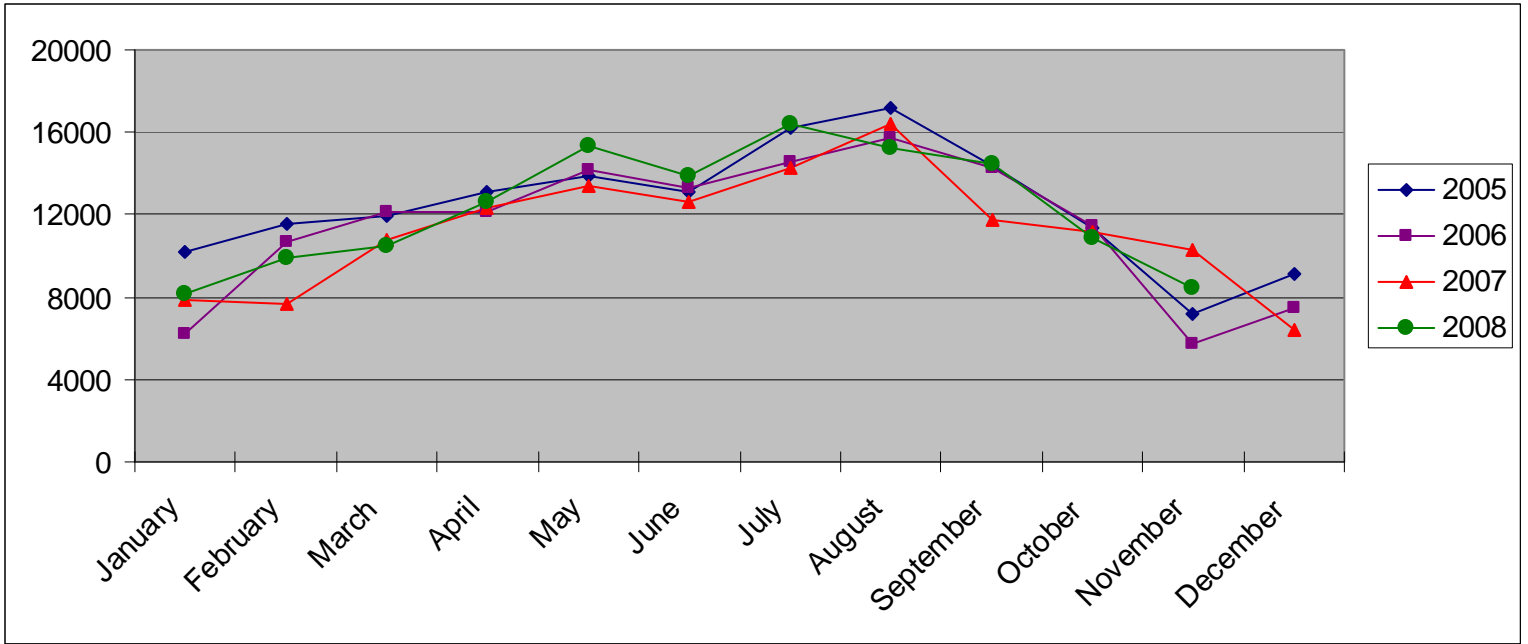
The graphic on the right depicts Paine Field's 16 noise quadrants and the locations of the three noise monitors. The red numbers within each quadrant represent how many calls were made from that quadrant in the month of November. "Unknown" represents complaints where the caller's quadrant was not identified. "Other" represents complaints from outside the four quadrants.



NOVEMBER 2008 NOISE COMPLAINTS

ID	Zone	Date	Time	N#	Aircraft	Activity	Traced To	Complaint
W050009	NE1	11/2/2008	14:20	BOE052	777-300	ARR 16R	Boeing	Loud
W980009	NW4	11/4/2008	09:45	BOE921	767-300	DEP 16R	Boeing	Noisy
E070003	SE4	11/7/2008	16:05	LAN1301	767-300	DEP 16R	LAN/Boeing	General Complaint
W980009	NW4	11/11/2008	09:12	EIA449	747-LCF	DEP 16R	Evergreen Airlines/ Boeing	Noisy
E070003	SE4	11/12/2008	08:35	EIA469	747-LCF	DEP 16R	Evergreen Airlines/ Boeing	Loud and Low
S050014	SW1							
C080004	NW4	11/13/2008	00:30	SWA8502	737-300	DEP 16R	Southwest/ATS	Loud and Late
W050009	NE1	11/13/2008	11:26	NAVYRS113	C-9	DEP 34L	Navy/ATS	Small but loud plane
S070005	SW2	11/13/2008	14:08	NAVYRS113	C-9	ARR 34L	Navy/ATS	Loud, Low
S080004	NW1	11/13/2008	23:50	N889DW	Learjet 60	ARR 16R	Private Owner	Too Loud
E070003	SE4	11/14/2008	10:50	EIA404	747-LCF	DEP 16R	Evergreen Airlines/ Boeing	Flight outbound, directly in front of my house
F920008	OTH	11/15/2008	14:58	ASA9327	737-700	ARR 34L	Alaska/ATS	Too Loud
F030001	NW4	11/16/2008	23:25	SWA8504	737-300	ARR 34L	Southwest/ATS	Very Loud, Over house
S980006	NW2	11/17/2008	11:59	NAVYJT048	C-9	ARR 16R	Navy/ATS	Too low over school & residential
N050001	SE3	11/18/2008	04:07	n/a	n/a	n/a	Could Not Be Traced	Woke me up
E070003	SE4	11/18/2008	15:10	BOE120	777-200	ARR 34L	Boeing	Flight inbound, directly over my house
W980009	NW4	11/18/2008	16:15	N183TX	Citation 525A	ARR 34L	Private Owner	Noisy
E070003	SE4	11/18/2008	19:40	SWA8752	737-300	ARR 34L	Southwest Airlines/ATS	Flight outbound, directly over my house
T080001	NW4	11/19/2008	00:08	SWA8503	737-300	DEP	Southwest Airlines/ATS	General Complaint, Late
W980009	NW4	11/20/2008	08:57	EIA449	747-LCF	DEP 16R	Evergreen Airlines/ Boeing	Noisy
F930013	SE4	11/20/2008						
F930013	SE4	11/21/2008	10:37	EIA5186	747-LCF	DEP 16R	Evergreen Airlines/ Boeing	Low, noisy, couldn't hear TV
H080005	OTH							
L080003	NW1	11/23/2008	05:00	n/a	n/a	n/a	Could Not Be Traced	Too noisy, early
F930013	SE4	11/23/2008	14:14	NAVYRS113	C-9	ARR 34L	Navy/ATS	Noise
F930013	SE4	11/23/2008	14:37	BOE353	737-800	LOW APP 34L	Boeing	Noise, Low
T080001	NW4	11/25/2008	00:15	SWA8503	737-300	DEP 16R	Southwest Airlines/ATS	Too loud, too late
W980009	NW4	11/25/2008	08:52	EIA449	747-LCF	DEP 16R	Evergreen Airlines/ Boeing	Noisy
W980009	NW4	11/25/2008	12:55	BOE852	777-300	DEP 34L	Boeing	Noisy
E070003	SE4	11/25/2008	13:45	SWA8751	737-300	DEP 16R	Southwest Airlines/ATS	Flight outbound, directly over house
F930013	SE4	11/25/2008	19:39	EIA461	747-LCF	ARR 34L	Evergreen Airlines/ Boeing	On top of my residence; low, low, noise
S980006	NW2	11/26/2008	12:50	EIA486	747-LCF	DEP 34L	Evergreen Airlines/ Boeing	Too Low
W050009	NE1	11/28/2008	09:10	SWA8501	737-300	ARR 16R	Southwest Airlines/ATS	Loud Large Jet
H050014	NE1	11/28/2008	09:35	EIA469	747-LCF	DEP 16R	Evergreen Airlines/ Boeing	Noisy and Low; shaking house
F930013	SE4							

MONTHLY OPERATIONS LEVELS 2005—2008



Snohomish County Airport—Paine Field
3220 100th St. SW Suite A
Everett, WA 98204