

Monthly Noise Summary

PAINE FIELD AIRPORT • 3220 100TH ST SW • EVERETT, WA 98204
NOISE HOTLINE: 425-353-2110 x1

OCTOBER 2008

INSIDE THIS ISSUE:

Article	Page
Monthly Summary Recording Noise Complaints	1
Monthly Flight Operations Noise Complaints Filed by Noise Quadrant	2
Noise Complaints	3
Monthly Operations Levels 2005-2008	4

OCTOBER SUMMARY

During October 2008, the airport office received 59 noise related calls and emails from individuals in the surrounding communities. All 59 complaints were regarding flight operations.

Noise calls are received via telephone hotline (425-353-2110 x1) or through the airport web page noise complaint form (see *Online* below).

Upon receipt, all complaints are investigated. The FAA retains radar data for 3 days before providing it to the airport's AIRSCENE noise monitoring system. Airport staff uses the AIRSCENE data and other sources to help identify which operation generated the noise complaint.

The aircraft operator is then notified of the complaint and made aware of the airport's noise abatement program. Callers who specifically request to be contacted are called back.

Since FAA operations data is not released until the third week of the following month, the monthly noise summary report is posted online (see *Online* below) the fourth week of the following month.

Page 2 shows a graphic representing the 16 noise sub-quadrants located around Paine Field. The graphic also depicts where Paine Field's 3 noise monitors are located.

Caller Identification Codes are listed with each complaint on page 3 to identify the individuals who made each call. First time callers will be notified of their new ID# by phone or email.

Some of the aircraft operations listed on page 3 are presumed to have originated or completed their flight at Paine Field.

Online at www.paineairport.com:

Noise Comment form: <http://www.paineairport.com/noise/noiseform.html>

Noise Summary Reports: <http://www.paineairport.com/noise/noisesummary.html>

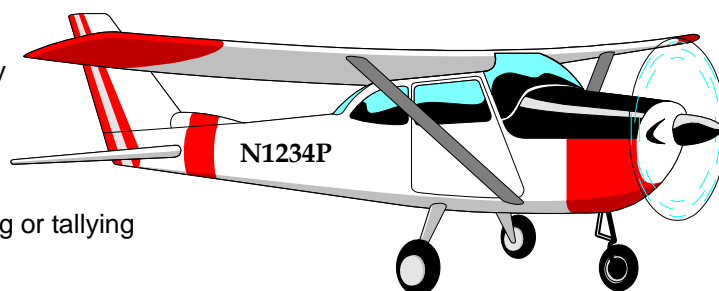
Paine Field Happenings: <http://www.paineairport.com/happenings/happenings.html>

RECORDING NOISE COMPLAINTS

Your noise calls are important to us. If there are flight operations taking place which are not ordinary, such as very low altitude operations, or repetitive overflights by jets, please do call in. However, if you see an ordinary aircraft taking off or landing, which seems to be abiding by reasonable standards, please be aware that the airport is here to accommodate aircraft. The airport is not collecting or tallying data to be used for any other purpose.

In filing a noise complaint, please include your name, address, phone number, **Email** & information pertaining to your concern. For those who have filed a noise complaint before, it is okay to just state your full name. The more complete your information, the better the chance of it being helpful in identifying the aircraft. Please make sure to include the date and time.

To help identify aircraft, please give a description of the aircraft (i.e. color, high-wing or low-wing, number of engines, and if possible please provide it's "N" number.) with the "N" number of N1234P. Direction of flight is also helpful.

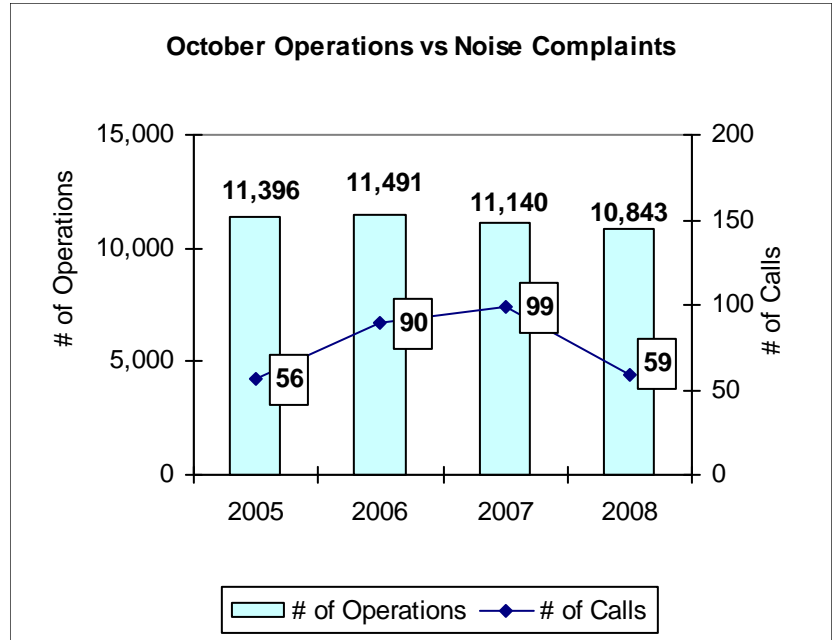


OCTOBER 2008 MONTHLY FLIGHT OPERATIONS

During October 2008, the FAA Paine Field Air Traffic Control Tower recorded 10,843 flight operations. This is a 2.6% decrease in operations from October 2007, which had 11,140 operations.

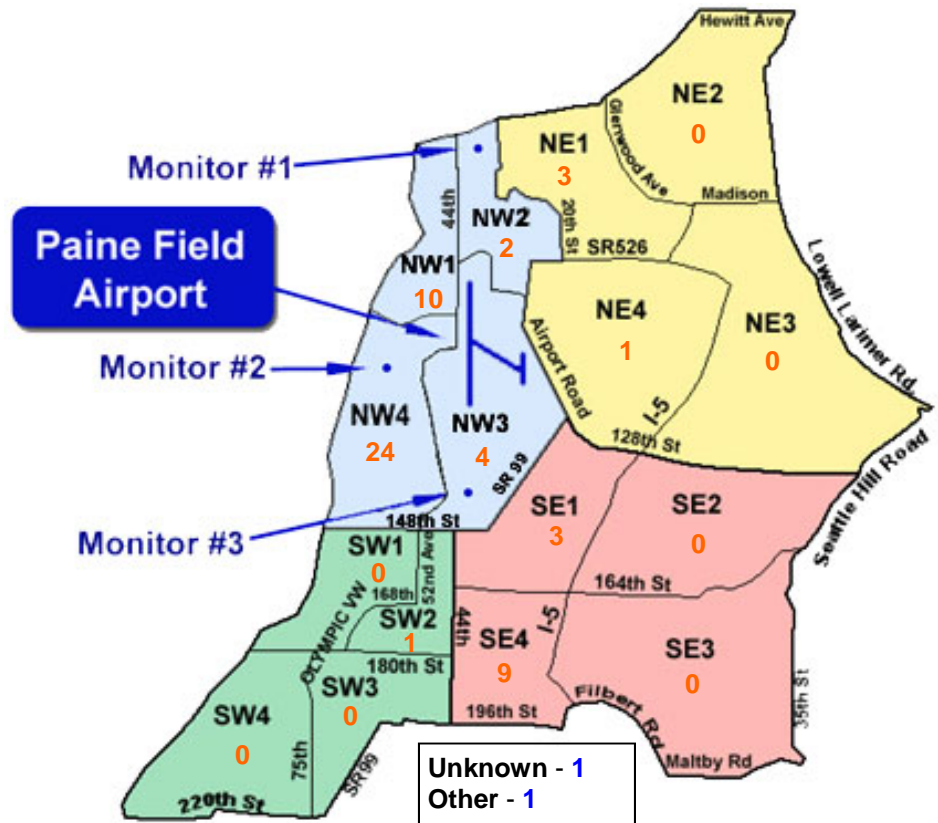
The four-year average number of flight operations for the month of October is 11,217. Total operations for October 2008 are 3.4% below the four-year average.

The graph shows operations compared to number of noise complaints for the years 2005, 2006, 2007 and 2008 during the month of October.



NOISE QUADRANTS

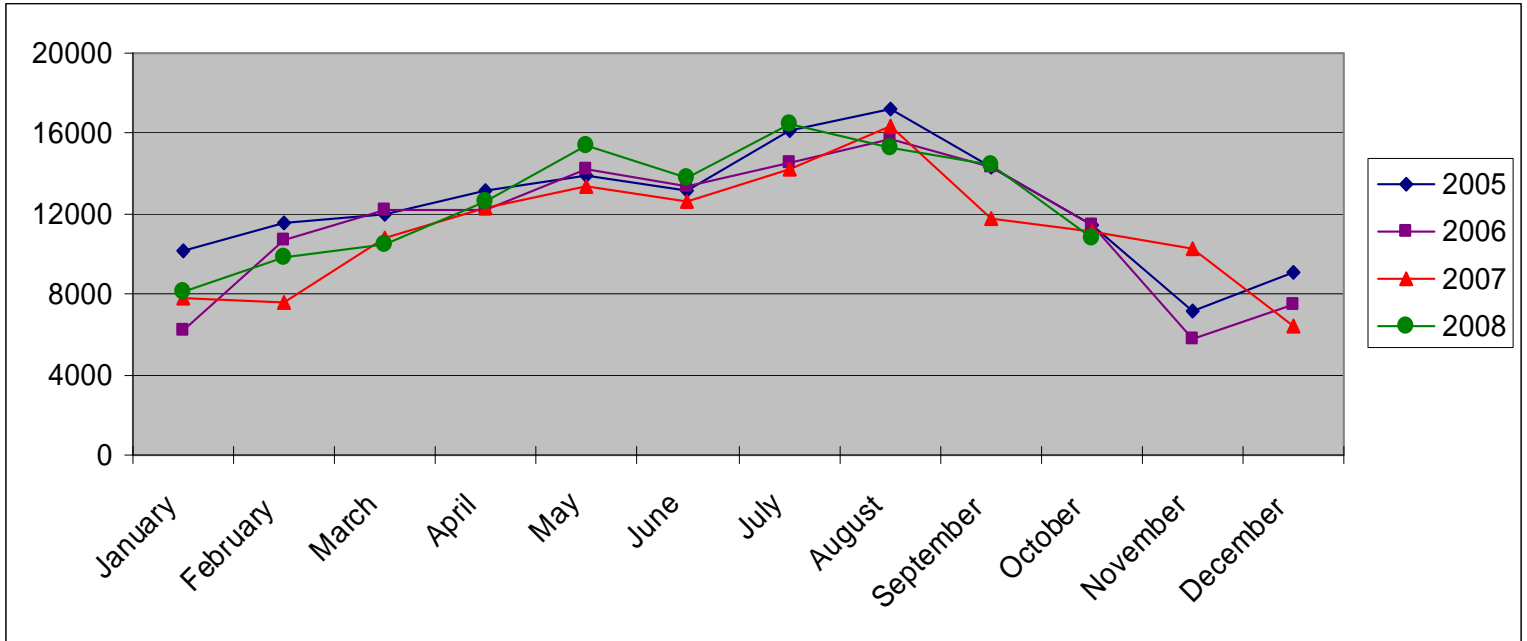
The graphic on the right depicts Paine Field's 16 noise quadrants and the locations of the three noise monitors. The red numbers within each quadrant represent how many calls were made from that quadrant in the month of October. "Unknown" represents complaints where the caller's quadrant was not identified. "Other" represents complaints from outside the four quadrants.



OCTOBER 2008 NOISE COMPLAINTS

ID	Zone	Date	Time	N#	Aircraft	Activity	Traced To	Complaint
H070001	NW4	10/2/2008	12:30	n/a	insufficient data	Circling	could not be traced	Circling
B080009	OTH	10/2/2008	00:01	SWA8503	737-300	ARR 16R	Southwest/ATS	Change Flight path
C050005	NW4	10/2/2008	01:15	SWA8503	737-300	ARR 16R	Southwest/ATS	Loud & Late Night
S070005	SW2	10/3/2008	12:16	REACH369	C-17	DEP 16R	Air Force	Loud, low
D970007	NW4	10/3/2008	12:20	NAVYJT050	C-9	Pattern Work 16R	Navy/ATS	Too Loud, house shook, noisy
R080001	NW4	10/3/2008						
W980009	NW4	10/3/2008						
W980009	NW4	10/3/2008	13:24	REACH369	C-5	DEP 16R	Air Force	Noisy
E070003	SE4	10/3/2008	16:30	NAVYJT050	C-9	DEP 16 R	Navy	General Complaint
F030001	NW4	10/3/2008	23:59	SWA8503	737-300	ARR 16R	Southwest/ATS	Loud
W980009	NW4	10/5/2008	13:07	N18TX	Citation C25A	DEP 16R	Private Owner	Noisy
D080001	NW4	10/9/2008	15:30	N40796	Piper Navajo	ARR 16R	Private Owner	Low, loud, excessive
E070003	SE4	10/10/2008	10:45	BOE874	777-300	ARR 34L	Boeing	General Complaint
H050011	NW1	10/11/2008	03:30	SWA8507	737-700	DEP 34L	Southwest/ATS	Loud, woke me up
K000001	NW2	10/11/2008	11:04	SWA8507	737-700	ARR 34L	Southwest/ATS	Large Jet, Late
G040001	NW4	10/11/2008	19:00	N783SE	C-172	DEP 34L	Private Owner	Loud
C050005	NW4	10/12/2008	13:45	N512AF	AlphaJet	T & G 16R	Private Owner	Low, Loud aircraft
B080008	NW1	10/12/2008	15:30	ASA9201	737-400	ARR 16R	Alaska Airlines/ATS	Low, Loud, Pollution?
Z080000	UNK	10/13/2008	1638	None	none	none	none	Why do I have to leave my personal information?
C080002	SE4	10/13/2008	22:15	n/a	n/a	n/a	could not be traced	Too Late
G040001	NW4	10/13/2008	19:00	n/a	insufficient data	insufficient data	could not be traced	Loud Jet
B080008	NW1	10/14/2008	10:04	n/a	n/a	n/a	could not be traced	Noise
H050011	NW1	10/15/2008	03:30	SWA8500	737-300	DEP 34L	Southwest/ATS	Loud, woke up
W050009	NE1	10/15/2008	08:10	UPS9361	757-200	DEP 34L	UPS/ATS	Large, Loud jet
H080004	NW3	10/17/2008	11:40	N711AF	DeHavilland Twin Otter	Low APP 16R	Private Owner	Too low, too loud
D080001	NW4	10/19/2008	06:44	n/a	n/a	n/a	could not be traced	Too loud
W980009	NW4	10/19/2008	13:23	CFYUL	Challenger 560	DEP 34L	could not be traced	Noisy
W980009	NW4	10/19/2008	16:02	N777EH	Hawker Jet	DEP 34L	Private Owner	Noisy
S080004	NW1	10/19/2008	16:50	ASA9351	737-700	DEP 34L	Alaska Airlines/ATS	Too Loud
S060003	NW4	10/20/2008	06:00	N838TH	Learjet 45	DEP 16R	Private Owner	Loud Jet
S080004	NW1	10/20/2008	09:25	SWA8755	737-300	ARR 16R	Southwest/ATS	Too loud, too late
S060003	NW4	10/21/2008	06:45	N583D	Beech Bonanza	DEP 16R	Coast Guard Aux	Loud Prop flying overhead
H080004	NW3	10/21/2008	16:00	N512AF	Alpha Jet	T & G 16R	Private Owner	Too Loud
S080004	NW1	10/21/2008	21:50	SWA8700	737-300	ARR 16R	Southwest/ATS	Too Loud, Late at night
H060002	NW4	10/22/2008	14:19	N5087F	P-51 Mustang	DEP 16R	Private Owner	Low flying, loud
D080001	NW4	10/23/2008	09:59	AMF8244	Beech 1900	ARR 34R	Ameri Flight	Too low, too loud
L080001	SE1	10/23/2008	15:55	AMF473	Beech 99	ARR 34L	AmeriFlight	Can't hear anything, too loud
L080001	SE1	10/23/2008	16:10	n/a	n/a	n/a	Numerous small aircraft	Can't hear anything, too loud
F930013	SE4	10/25/2008	12:05	BOE052	777-700	DEP 16R	Boeing	Verry, very low and noise
F930013	SE4	10/26/2008	12:18	ASA9352	737-700	ARR 34L	Alaska/ATS	Noisy
G060001	NW3	10/26/2008	15:25	REACH380T	C-5	ARR 34L	Air Force	Very Low and Very Loud, Worst One Yet!
A920001	SE4	10/26/2008						
F930013	SE4	10/26/2008						
A050003	SE1	10/26/2008	15:35	ASA9362	737-700	DEP 34L	Alaska/ATS	Low and Loud
F930013	SE4	10/26/2008						
W050009	NE1	10/27/2008	16:47	SWA8505	737-300	DEP 34L	Southwest/ATS	Noise
A980002	NW1	10/27/2008	17:55	REACH380T	C-5	DEP 34L	Air Force	Very low, very noisy, very big, 4 engine airplane
D960002	NW1	10/27/2008						
S040003	NW1	10/27/2008						
S080005	NW2	10/27/2008						
W050009	NE1	10/27/2008						
T060001	NW4	10/27/2008	19:30	SWA8508	737-700	DEP 34L	Southwest/ATS	Loud for night, flew over house can't hear TV
J080004	NE4	10/27/2008						
M050017	NW4	10/28/2008	23:24	LN315MS	Beech King Air	ARR 34L	Medevac	Low and Low
Y070000	SE4	10/29/2008	01:04	TN315MS	Beech King Air	DEP 16R	Medevac	Woke up, loud
M050017	NW4	10/29/2008	07:12	AMF492	Beech King Air	ARR 16R	AmeriFlight	Loud
M050017	NW4	10/29/2008	08:00	AMF492	Beech King Air	DEP 34L	AmeriFlight	Loud
H080004	NW3	10/31/2008	1120	n/a	n/a	n/a	could not be traced	Too Loud
S060003	NW4	10/31/2008	23:15	SWA8505	737-300	DEP 16R	Southwest/ATS	Loud, Low

MONTHLY OPERATIONS LEVELS 2005—2008



Snohomish County Airport—Paine Field
3220 100th St. SW Suite A
Everett, WA 98204