

# Monthly Noise Summary

PAINE FIELD AIRPORT • 3220 100TH ST SW • EVERETT, WA 98204  
NOISE HOTLINE: 425-353-2110 x1

## SEPTEMBER 2008

### INSIDE THIS ISSUE:

Article	Page
Monthly Summary Recording Noise Complaints	1
Monthly Flight Operations Noise Complaints Filed by Noise Quadrant	2
Noise Complaints	3
Monthly Operations Levels 2005-2008	4

### SEPTEMBER SUMMARY

**D**uring September 2008, the airport office received 37 noise related calls from individuals in the surrounding communities. 36 of those calls were complaints regarding flight operations.

Noise calls are received via telephone hotline (425-353-2110 x1) or through the airport web page noise complaint form (see *Online* below).

Upon receipt, all complaints are investigated. The FAA retains radar data for 3 days before providing it to the airport's AIRSCENE noise monitoring system. Airport staff uses the AIRSCENE data and other sources to help identify which operation generated the noise complaint.

The operator is then notified of the complaint and made aware of the airport's noise abatement program. Callers who specifically request to be contacted are called back.

Since FAA data is not released until the third week of the following month, the monthly noise summary report is posted online (see *Online* below) the fourth week of the following month.

Page 2 shows a graphic representing the 16 noise sub-quadrants located around Paine Field. The graphic also depicts where Paine Field's 3 noise monitors are located.

Caller Identification Codes are listed with each complaint on page 3 to identify the individuals who made each call. First time callers will be notified of their new ID# by phone or email.

The aircraft operations listed on page 3 are presumed to have originated and/or completed their flight at an airport other than Paine Field.

**Online** at [www.paineairport.com](http://www.paineairport.com):

Noise Comment form: <http://www.paineairport.com/noise/noiseform.html>

Noise Summary Reports: <http://www.paineairport.com/noise/noisesummary.html>

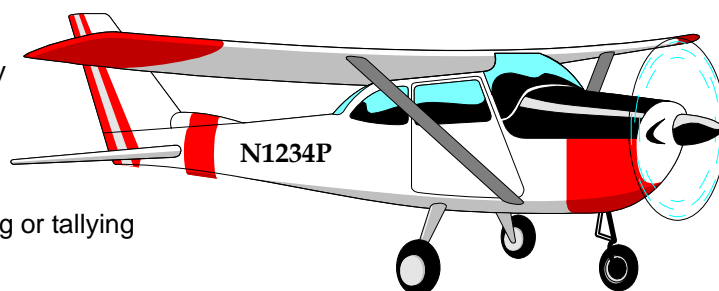
Paine Field Happenings: <http://www.paineairport.com/happenings/happenings.html>

### RECORDING NOISE COMPLAINTS

Your noise calls are important to us. If there are flight operations taking place which are not ordinary, such as very low altitude operations, or repetitive overflights by jets, please do call in. However, if you see an ordinary aircraft taking off or landing, which seems to be abiding by reasonable standards, please be aware that the airport is here to accommodate aircraft. The airport is not collecting or tallying data to be used for any other purpose.

In filing a noise complaint, please include your name, address, phone number, **Email** & information pertaining to your concern. For those who have filed a noise complaint before, it is okay to just state your full name. The more complete your information, the better the chance of it being helpful in identifying the aircraft. Please make sure to include the date and time.

To help identify aircraft, please give a description of the aircraft (i.e. color, high-wing or low-wing, number of engines, and if possible please provide it's "N" number.) with the "N" number of N1234P. Direction of flight is also helpful.

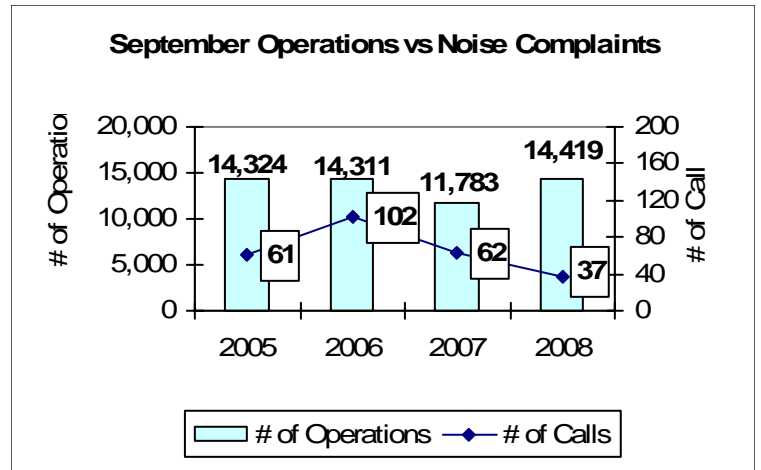


# SEPTEMBER 2008 MONTHLY FLIGHT OPERATIONS

During September 2008, the FAA Paine Field Air Traffic Control Tower recorded 14,419 flight operations. This is a 22% increase in operations from September 2007, which had 11,783 operations.

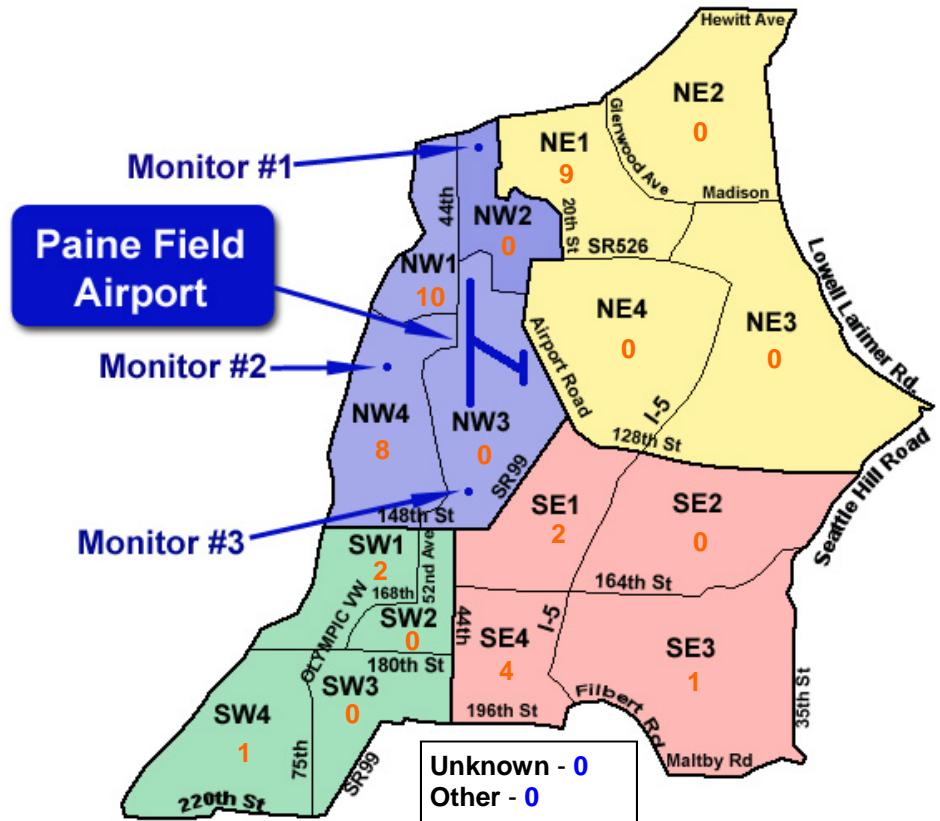
The four-year average number of flight operations for the month of September is 13,709. Total operations for September 2008 are 5% above the four-year average.

The graph shows operations compared to number of noise complaints for the years 2005, 2006, 2007 and 2008 during the month of September.



## NOISE QUADRANTS

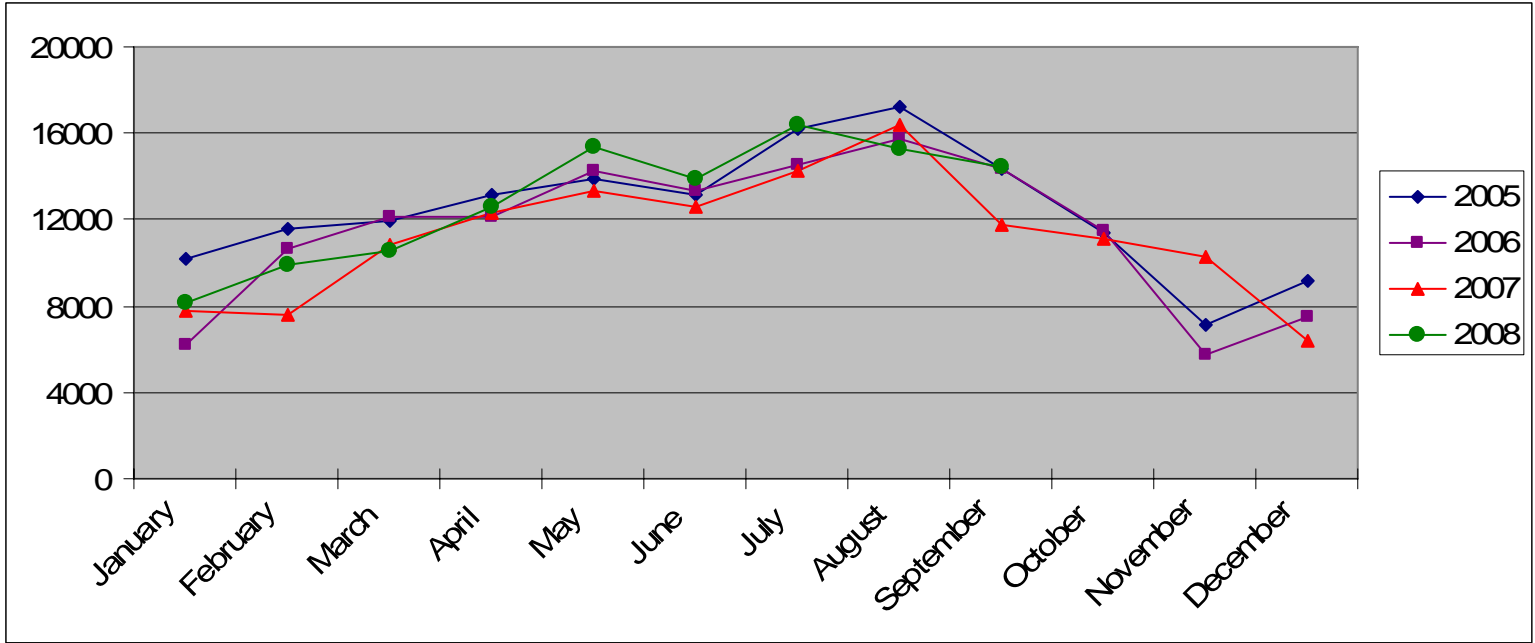
The graphic on the right depicts Paine Field's 16 noise quadrants and the locations of the three noise monitors. The red numbers within each quadrant represent how many calls were made from that quadrant in the month of September. "Unknown" represents complaints where the caller's quadrant was not identified. "Other" represents complaints from outside the four quadrants.



## SEPTEMBER 2008 NOISE COMPLAINTS

ID	Zone	Date	Time	N#	Aircraft	Activity	Traced To	Complaint
S050014	SW1	09/04/08	1040	n/a	n/a	Engine trim	Could not be traced	Loud, Engine Testing?
E080000	SW1	9/4/2008	11:47	SWA8750	737-700	ARR 34L	Southwest/ATS	Too Low
F930013	SE4	9/5/2008	14:30	BOE567	747-400	ARR 16R	Boeing	Noisy
F930013	SE4	9/5/2008	19:00	N889DW	Lear 60	ARR 34L	Private Owner	Noisy
Q920001	NW4	9/7/2008	19:40	N23SB	CL-600	ARR 34L	Private Owner	Low & Out of Flight Path
D050002	NW4	9/8/2008	18:00	n/a	n/a	n/a	could not be traced	Loud
D970007	NW4	9/9/2008	13:23	N580AS	Convair 500	DEP 34L	Honeywell	Loud & Circling
G040001	NW4	9/9/2008	19:00	n/a	n/a	n/a	could not be traced	Don't understand why planes are flying low
E070003	SE4	9/10/2008	10:30	NAVY JS266	C-9B	ARR 34 L	Navy/ATS	General Complaint
G040001	NW4	9/10/2008	19:00	N33D	Cessna	DEP 34L	Private Owner	Annoying
W050009	NE1	9/12/2008	11:00	UPS9318	757-200	DEP 34L	UPS/ATS	Loud Jet Landing
N050001	SE3	9/12/2008	20:32	AIRLIFT6	Agusta A-109	Transitioning	Airlift Northwest	Very Loud
P960008	SW4	9/12/2008	23:51	N16292	Piper Seneca	ARR 34L	Private Owner	Circling
Q920001	NW4	9/13/2008	02:42	N889DW	Lear 60	ARR 34L	Private Owner	Low & Fast
W050009	NE1	9/13/2008	10:59	BOE804	777-300	DEP 34L	Boeing	Loud
W050009	NE1	9/13/2008	13:24	BOE804	777-300	ARR 16R	Boeing	Loud
W050009	NE1	9/13/2008	15:18	JANET282	737-200	DEP 34L	Air Force/ATS	Loud, Large
H050014	NE1	9/14/2008	11:25	BOE567	747-400	DEP 34L	Boeing	Large Jet
W050009	NE1	9/14/2008	15:51	BOE567	747-400	DEP 34L	Boeing	Loud, Large
H050014	NE1	9/14/2008	17:37	BOE567	747-400	ARR 16R	Boeing	Landing Jet
B040007	NW1	9/15/2008	17:04	N54BA	R-22 Helicptr	South Departure	Private Owner	Flys right over my house
B040007	NW1	9/16/2008	09:34	N06F	Navion	DEP 34L	Private Owner	Noisy, Irritating
L080001	SE1	9/16/2008	22:15	ASA9325	737-800	ARR 34L	Alaska/ATS	Again with the noise
B040007	NW1	9/17/2008	16:23	N40XE	Diamond 40	ARR 34L	Private Owner	Airplanes continuously fly over our house
H050014	NE1	9/21/2008	17:45	DAL9936	757-200	ARR 16R	Delta/ATS	Large and Loud
M040003	NW1	9/22/2008	00:15	SWA8505	737-700	DEP 34L	Southwest/ATS	Loud, Late
L080001	SE1	9/23/2008	18:35	n/a	n/a	n/a	could not be traced	Too much noise
B050019	NW1	9/24/2008	22:54	ASA9001	737-900	DEP 16R	Alaska/ATS	Too late
B050019	NW1	9/25/2008	00:03	ASA9002	737-700	ARR 16R	Alaska/ATS	Late Night
W050009	NE1	9/26/2008	08:00	UPS9333	747-400	DEP 34L	UPS/ATS	Loud
A080001	NW1	9/26/2008	17:00	n/a	Vintage Warbirds	T & G 16R	Warbirds Weekend	Annoying, excessive noise
F930013	SE4	9/27/2008	11:42	CPA3337	777-300	DEP 34L	Cathay Pacific/ Boeing	Noisy
B080006	NW1	9/27/2008	15:03	n/a	Vintage Warbirds	ARR 16R	Warbirds Weekend	All day long, planes buzzing, flying over my house
B080007	NW1							
M080002	NW4							
C080003	NW1							
W980009	NW4	9/30/2008	13:27	N529PP	737-700	DEP 34L	Private Owner/ ATS	Noisy

# MONTHLY OPERATIONS LEVELS 2005—2008



Snohomish County Airport—Paine Field  
3220 100th St. SW Suite A  
Everett, WA 98204