

# Monthly Noise Summary

PAINÉ FIELD AIRPORT • 3220 100TH ST SW • EVERETT, WA 98204  
 NOISE HOTLINE: 425-353-2110 x1

## AUGUST 2008

### INSIDE THIS ISSUE:

Article	Page
Monthly Summary Recording Noise Complaints	1
Monthly Flight Operations Noise Complaints Filed by Noise Quadrant Monthly Operations Levels 2005-2008	2
Noise Complaints	3
Noise Complaints	4

### AUGUST SUMMARY

**D**uring August 2008, the airport office received 114 noise related calls from individuals in the surrounding communities. All 114 of those calls were complaints regarding flight operations. 41 (or 36%) of the complaints were filed by 3 individuals.

Noise calls are received via telephone hotline (425-353-2110 x1) or through the airport web page noise complaint form (see *Online* below).

Upon receipt, all complaints are investigated. The FAA retains radar data for 3 days before providing it to the airport's AIRSCENE noise monitoring system. Airport staff uses the AIRSCENE data and other sources to help identify which operation generated the noise complaint. The operator is then notified of the complaint and made aware of the airport's noise abatement program. Callers who specifically request to be contacted are called back.

The monthly noise summary report is posted online (see *Online* below) the fourth week of the following month.

Page 2 shows a graphic representing the 16 noise sub-quadrants located around Paine Field. The graphic also depicts where Paine Field's 3 noise monitors are located.

Caller Identification Codes are found on page 3 to identify the individuals who made each call. First time callers will be notified of their new ID # by phone or email.

Some of the aircraft events listed on page 3 are presumed to have originated and/or completed their flight at an airport other than Paine Field.

**Online** at [www.paineairport.com](http://www.paineairport.com):

Noise Comment form: <http://www.paineairport.com/noise/noiseform.html>

Noise Summary Reports: <http://www.paineairport.com/noise/noisesummary.html>

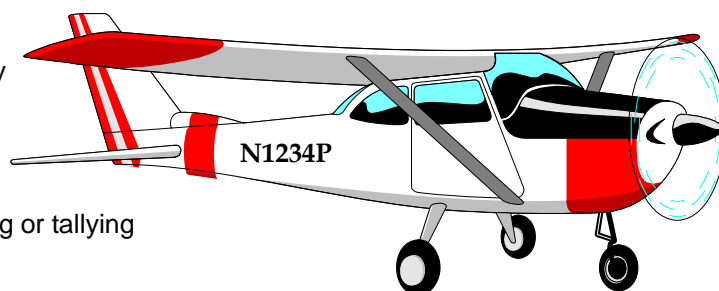
Paine Field Happenings: <http://www.paineairport.com/happenings/happenings.html>

### RECORDING NOISE COMPLAINTS

Your noise calls are important to us. If there are flight operations taking place which are not ordinary, such as very low altitude operations, or repetitive overflights by jets, please do call in. However, if you see an ordinary aircraft taking off or landing, which seems to be abiding by reasonable standards, please be aware that the airport is here to accommodate aircraft. The airport is not collecting or tallying data to be used for any other purpose.

In filing a noise complaint, please state your name, address, phone number, **Email &** information pertaining to your concern. For those who have filed a noise complaint before, it is okay to just state your full name. The more complete your information, the better the chance of it being helpful in identifying the aircraft.

To help identify small propeller aircraft, please give a description of the aircraft (i.e. color, high-wing or low-wing, number of engines, and if possible please provide it's "N" number.) with the "N" number of N1234P.



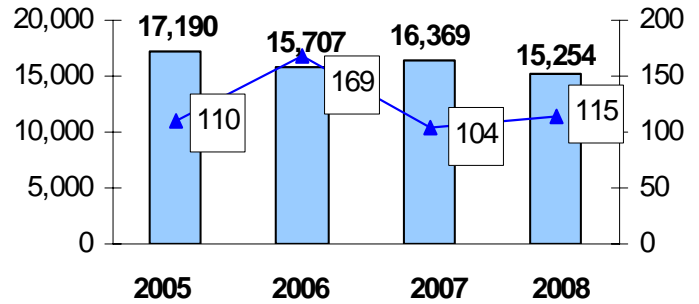
## AUGUST 2008 MONTHLY FLIGHT OPERATIONS

During August 2008, the FAA Paine Field Air Traffic Control Tower recorded 15,254 flight operations. This is a 9% decrease in operations from August 2007, which had 16,369 operations.

The four-year average number of flight operations for the month of August is 16,130. Total operations for August 2008 are 9% below the four-year average.

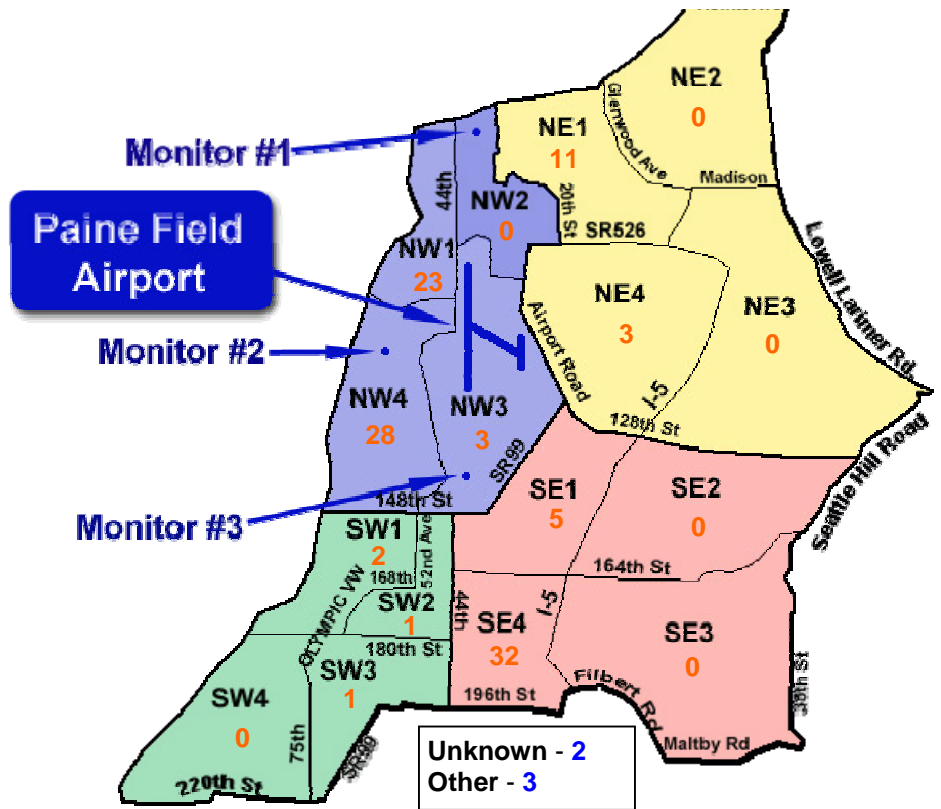
The graph shows operations compared to number of noise complaints for the years 2005, 2006, 2007 and 2008 during the month of August.

## August Operations vs. Noise Complaints

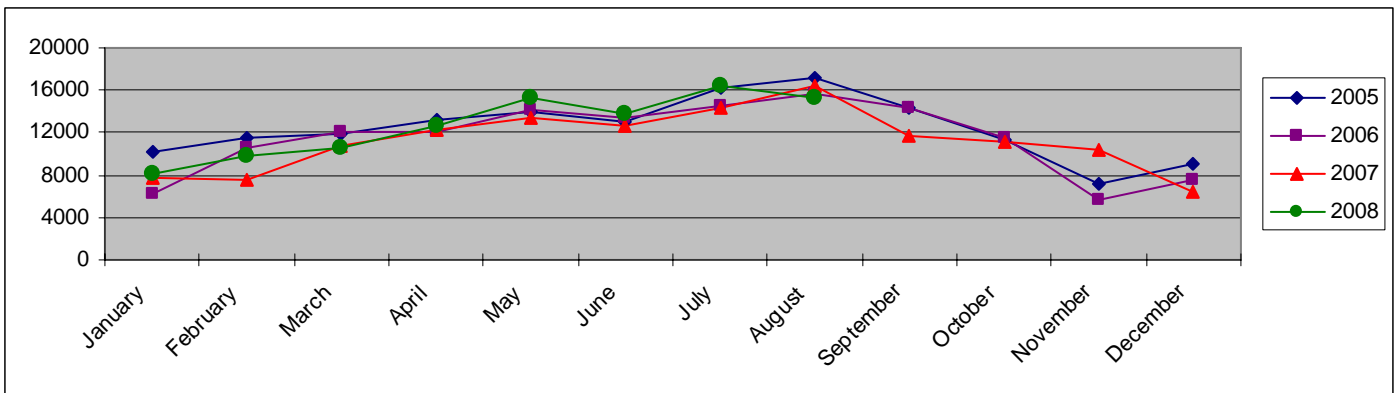


## NOISE QUADRANTS

The graphic on the right depicts Paine Field's 16 noise quadrants and the locations of the three noise monitors. The red numbers within each quadrant represent how many calls were made from that quadrant in the month of August. "Unknown" represents complaints where the caller's quadrant was not identified. "Other" represents complaints from outside the four quadrants.



## MONTHLY OPERATIONS LEVELS 2005—2008



## August 2008 NOISE COMPLAINTS

ID	Zone	Date	Time	N#	Aircraft	Activity	Traced To	Complaint
M050018	NW4	8/1/2008	11:45	BOE548	777-200	T & G 16R	Boeing	Low & Loud
W980009	NW4							
L080001	SE1	8/1/2008	18:45	JAL7901	777-300	DEP 16R	Japan Airlines/Boeing	Noisy
F930013	SE4	8/3/2008	13:03	UPS9543	757-200	ARR 34L	UPS/ATS	Noisy
W980009	NW4							
F930013	SE4	8/3/2008	13:03	BOE791	737-300	DEP 34L	Boeing	Noisy
G040001	NW4	8/3/2008	16:00	n/a	n/a	n/a	could not be traced	Low & Noisy
S040008	NW1	8/3/2008	16:10	BOE791	737-300	ARR 34 L	Boeing	Low & Loud
F930013	SE4	8/3/2008	18:08	N296SB	Challenger 300	ARR 34L	Ranger Corp	Noisy
G040001	NW4	8/4/2008	13:00	BOE936	777-300	DEP 34L	Boeing	Low & Noisy
W980009	NW4	8/4/2008	13:22	BOE936	777-300	T & G 16R	Boeing	Noisy
G040001	NW4	8/4/2008	13:30	N601BW	Challenger-600	DEP 34L	K and M Two LLC	Low & Noisy
E080000	SW1	8/4/2008	15:14	BOE791	737-800	ARR 34L	Boeing	Out of Flight Path & Very Loud
E070003	SE4	8/4/2008	17:45	n/a	n/a	n/a	could not be traced	General Complaint
Q920001	NW4							
C080002	SE4	8/4/2008	18:15	N598MM	Pilatus PC-12	ARR 34L	Macanair LLC	Loud
F930013	SE4	8/4/2008	19:05	VNR130	Piaggio Avanti	ARR 16R	Avant Air Inc	Noisy
F930013	SE4	8/5/2008	10:24	N404HG	Challenger-600	ARR 34L	Kimberly-Clark Global Sales	Noisy
F930013	SE4	8/5/2008	12:10	ASP686	Citation Excel	ARR 34 L	Air Sprint	Noisy & low
Q920001	NW4							
F930013	SE4	8/5/2008	18:55	EIA5141	LCF-747	ARR 16R	Evergreen Airlines/Boeing	Noisy
D970007	NW4	8/5/2008	20:18	n/a	Beech P35	ARR 34 L	Private Owner	Low & loud
S070008	NW3	8/5/2008	22:00	N1958Q	C-177RG	T & G 34L	Private Owner	Loud & Late at Night
F920008	OTH	8/6/2008	16:45	BOE161	747-400	ARR 16R	Boeing	Too Loud
S070008	NW3	8/6/2008	22:00	N738ZT	Cessna 172	T & G 34L	Private Owner	Loud & Late at Night
B050020	NW1	8/7/2008	16:42	N7551T	P-51D Mustang	ARR 16R	Historic Aircraft foundation	Loud & Low
G060002	UNK	8/7/2008	18:46	N598MM	PC-12	DEP 34L	Macanair LLC	Too Low, Noisy
E070003	SE4	8/8/2008	13:00	n/a	n/a	n/a	could not be traced	General Complaint
H050014	NE1	8/8/2008	14:37	n/a	n/a	n/a	could not be traced	Loud
L080001	SE1	8/8/2008	16:56	N761PV	Centurion	ARR 16R	Private Owner	General Complaint
E070003	SE4	8/8/2008	17:45	BOE582	747-400	Low Approach 16R	Boeing	General Complaint
E070002	SE4	8/8/2008	22:15	SNOHAWK1	MD-500	Orbiting	Snohomish County Sheriff	Circling
W980009	NW4	8/9/2008	00:53	n/a	n/a	n/a	could not be traced	Noisy
W980009	NW4	8/9/2008	10:29	SWA8502	737-300	DEP 16R	Southwest/ATS	Noisy
E070003	SE4	8/9/2008	10:30	NAVY JU119	C-9B	DEP 16 R	Navy	General Complaint
E070003	SE4	8/9/2008	11:50	EIA5186	747-LCF	DEP 16R	Evergreen Airlines/ Boeing	General Complaint
E070003	SE4	8/9/2008	13:00	n/a	n/a	n/a	could not be traced	General Complaint
H050014	NE1	8/9/2008	14:41	BOE936	777-300	ARR 16R	Boeing	General Complaint
W050009	NE1	8/9/2008	15:39	BOE002	777-200	ARR 16R	Boeing	Loud
W050009	NE1	8/9/2008	15:49	BOE001	777-200	ARR 16R	Boeing	Loud
F930013	SE4	8/9/2008	16:10	n/a	n/a	n/a	could not be traced	Noisy
W980009	NW4	8/10/2008	11:16	BOE582	747-400	DEP 16R	Boeing	Noisy
E070003	SE4							
T060001	NW4	8/11/2008	07:30	SNOHAWK1	MD-500	Orbiting	Snohomish County Sheriff	Circling, Too early, low
C050008	NE4	8/11/2008	11:55	N54BA	R-22	Patternwork	Private Owner	Flies over and over again
W050008	NW3							
R080000	NW1	8/11/2008	19:15	N2334X	R-22	ARR 34L	Private Owner	Noisy
S080004	UNK	8/12/2008	00:42	SWA8504	737-300	ARR 34L	Southwest/ATS	Noisy
Q920001	NW4							
F930013	SE4							
W980009	NW4	8/13/2008	14:25	BOE012	737-900	T & G 16R	Boeing	Noisy
L080001	SE1	8/13/2008	22:30	N1152Z	C- 172	ARR 34L	Private Owner	Not Ok!
L080001	SE1	8/13/2008	22:45	N9719Y	Beech P35	ARR 34L	Private Owner	Circling, This Is Not Seatac
L080001	SE1	8/14/2008	12:28	n/a	n/a	n/a	could not be traced	General Complaint
W980009	NW4	8/14/2008	14:50	BOE57A	757-200	T & G 16R	Boeing	Noisy
E070003	SE4	8/14/2008	20:25	N900LA	Gulfstream III	ARR 34L	Sonoran Charters LLC	General Complaint
B050020	NW1	8/15/2008	09:30	EIA5109	747-LCF	DEP 34L	Evergreen Airlines/Boeing	Loud & Low
B050020	NW1	8/15/2008	09:30	N462PC	PC-12	ARR 34L	Private Owner	Loud & Low
D060001	NW1	8/15/2008	13:33	RS116	DC-9	DEP 34L	Navy	Loud

**AUGUST 2008**

ID	Zone	Date	Time	N#	Aircraft	Activity	Traced To	Complaint
Q920001	NW4	8/15/2008	14:30	Ambush31	FA-18	Low Approach 34L	Navy	Pretty Loud
C920006	NW4							
S070002	NW1	8/15/2008	15:00	n/a	n/a	n/a	could not be traced	Low, Loud
S050005	NW4	8/15/2008	16:05	RS116	DC-9	ARR 34L	Navy/ATS	Loud & Low
T080003	NE1							
H050014	NE1	8/16/2008	11:25	N57A	Cessna 210	Pattern Work	Private Owner	Loud
F930013	SE4	8/16/2008	16:01	N150EX	Westwind 1124	ARR 34L	Boomerang Air Inc	Noisy
W050009	NE1	8/17/2008	08:45	N583CE	Citation V	DEP 34L	Private Owner	Loud & Shook House
B050020	NW1	8/17/2008	08:50	n/a	n/a	n/a	could not be traced	Loud & Low
M080000	NW1	8/17/2008	09:00	n/a	n/a	n/a	could not be traced	Excessive noise. Made 2 passes
W050009	NE1	8/17/2008	09:05	N601BW	Challenger-600	DEP 34L	K & M Two LLC	Loud & Shook House
T080001	NW4	8/17/2008	09:22	N601BW	Challenger-600	ARR 34L	K & M Two LLC	General Complaint
S070002	NW1							
W050009	NE1	8/17/2008	9:22	Ambush 11	FA-18	DEP 34L	Navy	Loud & Shook House
T080001	NW4	8/17/2008	09:35	N900LA	Gulfstream III	DEP 34L	Sonoran Charters LLC	General Complaint
S070002	NW1							
S070002	NW1	8/17/2008	09:45	n/a	n/a	n/a	could not be traced	Too Loud, Too Early
F930013	SE4	8/17/2008	13:18	N601BW	Challenger-600	DEP 34L	K & M Two LLC	Noisy
F930013	SE4							
H080002	NW1	8/18/2008	01:00	N604SJ	Challenger-600	DEP 16R	Jetson LLC	Loud
W980009	NW4	8/18/2008	11:50	EIA5186	747-LCF	DEP 16 R	Evergreen Airlines/Boeing	Noisy
E070003	SE4	8/18/2008	12:00	CONT1581	737-800	DEP 16 R	Continental Airlines	General Complaint
Q920001	NW4	8/20/2008	01:44	SWA8532	737-700	DEP 16R	Southwest/ATS	Large Jet, Loud
E070003	SE4	8/20/2008	12:50	BOE052	777-200	DEP 16R	Boeing	General Complaint
E070003	SE4	8/21/2008	16:20	BOE582	747-400	DEP 16R	Boeing	General Complaint
F930013	SE4	8/22/2008	19:42	AMF497	Piper Navajo	ARR 34L	Ameri Flight	Noisy
A040002	NW1	8/23/2008	00:08	n/a	n/a	n/a	could not be traced	Noisy
S050014	SW1	8/23/2008	09:40	Mustang flight	P-51 Mustang	ARR 34L	Flying Heritage Collection	Low & Loud
A040002	SW1	8/23/2008	1040	N266M	Fairchild Merlin	DEP 34L	Private Owner	Noisy
A040002	SW1							
W060005	NW1	8/23/2008	12:42	FHC 1	Messerschmidt	Low Flyby 16R	Flying Heritage Collection	Flying over house, annoying
W060005	NW1	8/23/2008	12:49	FHC 2	P-51 Mustang	Low Flyby 16R	Flying Heritage Collection	General Complaint
E070003	SE4	8/23/2008	15:12	BOE002	777-200	ARR 34L	Boeing	General Complaint
F930013	SE4	8/23/2008	15:54	EIA5180	747-LCF	ARR 34L	Evergreen Airlines/ Boeing	Noisy
H080003	NE4	8/23/2008	16:00	BOE115	737-900	Missed 16R	Boeing	Aborted landing
A040002	NW1	8/25/2008	01:35	SWA8502	737-700	DEP 34L	Southwest/ATS	Loud
F930013	SE4	8/25/2008	10:52	N296SB	Challenger 300	DEP 16R	Ranger Corp	Noisy
F920008	OTH	8/25/2008	11:30	BOE582	747-400	ARR 34L	Boeing	Too Loud
W980009	NW4	8/26/2008	09:25	EIA409	LCF-747	DEP 16R	Evergreen Airlines/Boeing	Noisy
E070003	SE4	8/26/2008	09:30	BOE873	777-300	DEP 34L	Evergreen Airlines/ Boeing	General Complaint
G080003	NE4	8/26/2008	17:00	BOE873	777-300	DEP 16R	Boeing	Loud
B050022	SW3	8/27/2008	09:40	N92TH	King Air	DEP 16R	Fluid Aviation LLC	High pitched whistle. Right over my house
F920008	OTH	8/27/2008	16:50	BOE873	777-200	ARR 16R	Boeing	Too Damn Loud!!!
W050009	NE1	8/28/2008	08:15	EIA406	747-LCF	ARR 16R	Evergreen Airlines/Boeing	Loud, Large
H060002	NW4	8/28/2008	09:26	EIA406	747-LCF	DEP 16R	Evergreen Airlines/ Boeing	Loud, Long Rumbling, low,
E070003	SE4	8/28/2008	14:55	EMIRATES777	777-200	DEP 16R	Emirates/Boeing	General Complaint
E070003	SE4	8/28/2008	15:05	EMIRATES778	777-300	DEP 16R	Emirates/Boeing	General Complaint
W980009	NW4	8/29/2008	09:15	EIA406	747-LCF	DEP 16R	Evergreen Airlines/Boeing	Noisy
E970000	SW2							
D970007	NW4	8/29/2008	15:35	N49WA	Learjet 25	ARR 34L	Fleet Unlimited Inc.	General Complaint
W050009	NE1	8/30/2008	09:45	QTR3052	777-300	DEP 34L	Qatar Airlines/Boeing	Loud
B050020	NW1	8/31/2008	09:30	AMBUSH 11	FA-18	DEP 34L	Navy	Loud & Low
B050020	NW1	8/31/2008	09:45	BOE051	777-200	DEP 34L	Boeing	General Complaint
B050019	NW1	8/31/2008	22:10	SWA8510	737-700	DEP 34L	Southwest/ATS	Too Late, Too Loud