

Monthly Noise Summary

PAINÉ FIELD AIRPORT • 3220 100TH ST SW • EVERETT, WA 98204
 NOISE HOTLINE: 425-353-2110 x1

JUNE 2008

INSIDE THIS ISSUE:

Article	Page
Monthly Summary Recording Noise Complaints	1
Monthly Flight Operations Noise Complaints Filed by Noise Quadrant Monthly Operations Levels 2005-2008	2
Noise complaints	3
Noise Complaints	4

JUNE SUMMARY

During June 2008, the airport office received 93 noise related calls from individuals in the surrounding communities. 92 of those calls were complaints regarding flight operations. 34 or 36% of the complaints were filed by 2 individuals.

Noise calls are received via telephone hotline (425-353-2110 x1) or through the airport web page noise complaint form (www.painefield.com/noise/noiseform.html). Upon receipt, all complaints are investigated. The FAA retains radar data for 3 days before providing it to the airport's AIRSCENE noise monitoring system. Airport staff uses the AIRSCENE data and other sources to help identify which operations generated the complaint. The operator is notified of the complaint and made aware of the airport's noise abatement program. Callers who specifically request to be contacted are called back.

The monthly noise summary will be posted online at www.painefield.com the third week of the following month.

Caller Identification Codes are found on page 3 to identify the individuals who made each call. Callers will find their ID number on the mailing label. Some of the aircraft events listed on page 3 are presumed to have originated and/or completed their flight at an airport other than Paine Field.

After the individual complaint listings you will find a graphic representing the 16 noise sub-quadrants located around Paine Field. The graphic also depicts where Paine Field's three noise monitors are located.

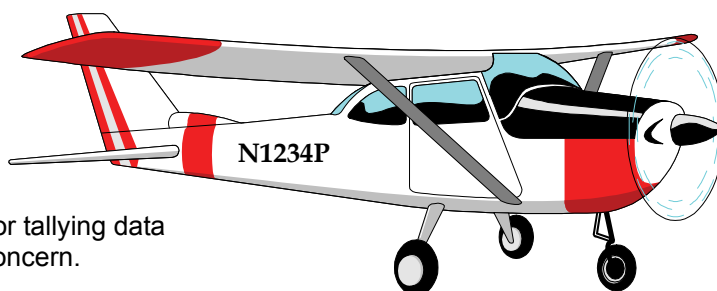
In addition to this monthly noise report, you will find a copy of Snohomish County Airport's monthly tenant newsletter, *Paine Field Happenings*. The newsletter is sent to all airport tenants and users and is also found on our website at: www.painefield.com/happenings/Happenings.html.

RECORDING NOISE COMPLAINTS

Your noise calls are important to us. If there are flight operations taking place which are not ordinary such as very low altitude operations, or repetitive overflights by jets, please do call in. However, if you see an ordinary aircraft taking off or landing, which seem to be abiding by reasonable standards, please be aware that the airport is here to accommodate aircraft. The airport is not collecting or tallying data to be used for any other purpose other than tracking your concern.

In filing your noise complaints, please state your name, address, phone number, and the information pertaining to your concern. For those who have filed a noise complaint before, it is okay to just state your full name. The more complete your information, the better the chance of it being helpful in identifying the aircraft.

To help identify small propeller aircraft, please give a description of the aircraft (i.e. color, high-wing or low-wing, number of engines, and if possible provide it's "N" number.) with the "N" number of N1234P.

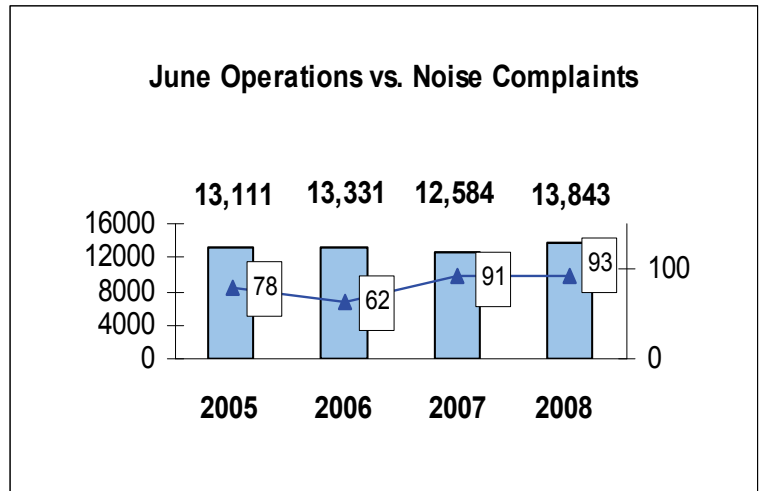


JUNE 2008 MONTHLY FLIGHT OPERATIONS

During June 2008, the FAA Paine Field Air Traffic Control Tower recorded 13,843 flight operations. This is a 10% increase in operations from June 2007, which had 12,584 operations.

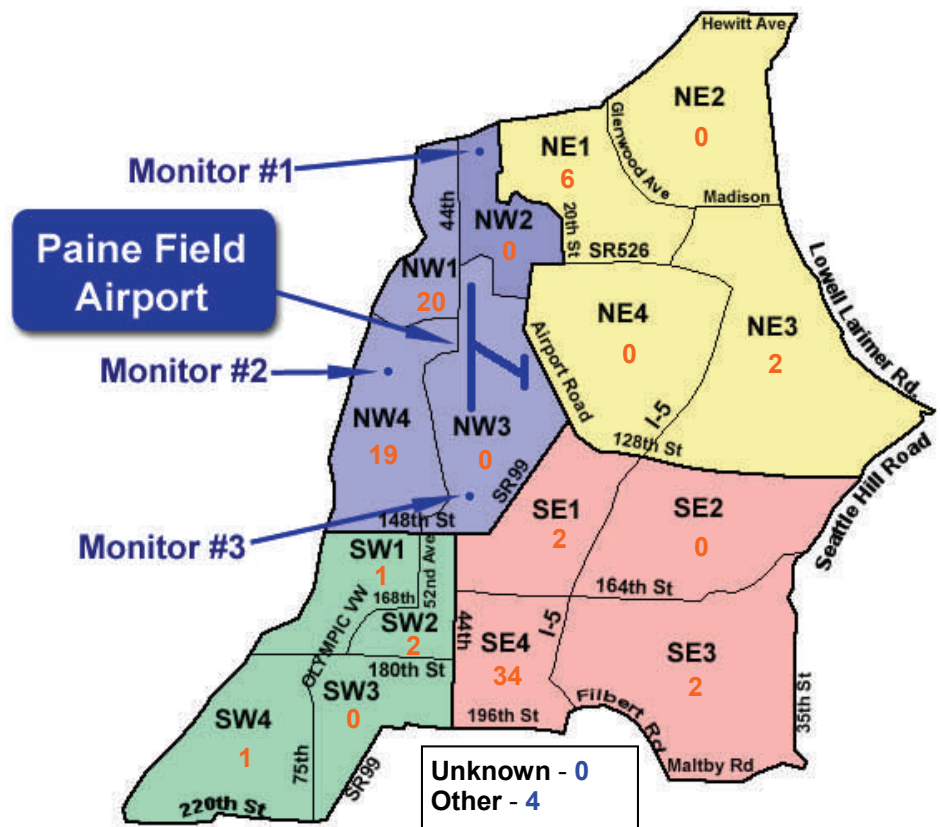
The four-year average number of flight operations for the month of June is 13,217. Total operations for June 2008 are 5% above the four-year average.

The graph shows operations compared to number of noise complaints for the years 2005, 2006, 2007 and 2008 during the month of June.

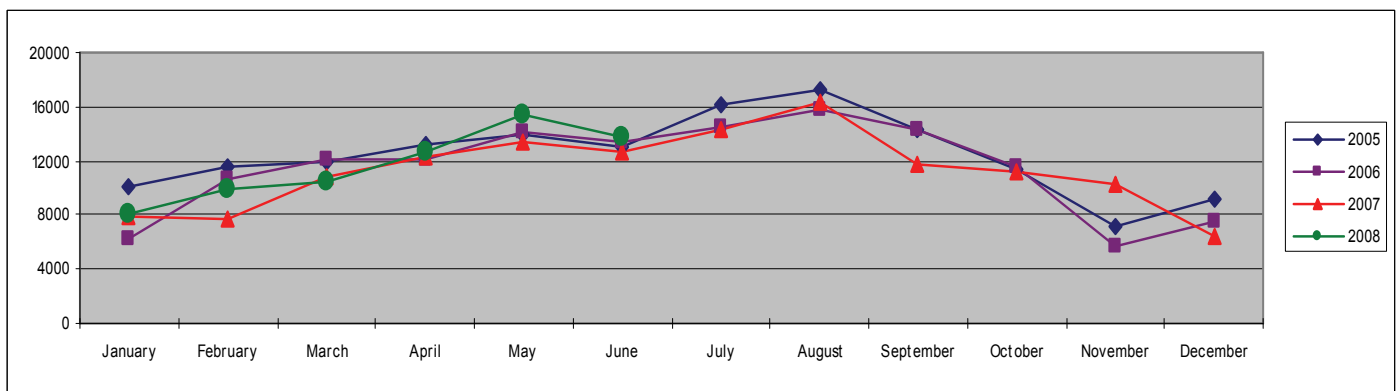


NOISE QUADRANTS

The graphic on the right depicts Paine Field's 16 noise quadrants and the locations of the three noise monitors. The blue numbers within each quadrant represent how many calls were made from that quadrant in the month of June. "Unknown" represents complaints where the caller's quadrant was not identified. "Other" represents complaints from outside the four quadrants.



MONTHLY OPERATIONS LEVELS 2005—2008



JUNE 2008 NOISE COMPLAINTS

You can find your Caller Identification Number on your mailing label.

ID	Zone	Date	Time	N#	Aircraft	Activity	Traced To	Complaint
E070003	SE4	6/1/2008	09:15	EIA406	747-LCF	DEP 16R	Evergreen Airlines/ Boeing	Loud, Low
P080002	SE3	6/2/2008	10:30	n/a	n/a	Circled around house	could not be traced	Cant get rest from noise
B920015	NW1	6/2/2008	22:06	FIREWOOD3	UH-60	Low APP 16R	Navy	Shook Windows
S070005	SW2	6/3/2008	09:30	EIA5109	747-LCF	DEP 16R	Evergreen Airlines/ Boeing	Low, Loud
D970007	NW4							
P050006	NW1	6/3/2008	12:50	BOE164	747-400	DEP 34L	Boeing	Loud
B050019	NW1	6/3/2008	23:30	n/a	n/a	n/a	could not be traced	Late, Woke me up
B050019	NW1	6/4/2008	00:06	N531FL	Falcon Jet	ARR 16R	Private Owner	Late night, Loud
B050019	NW1	6/5/2008	23:37	n/a	n/a	n/a	could not be traced	Late Night
B050019	NW1	6/6/2008	00:47	KEN23	C-206	Missed 16R	Kenmore Air	Late Night, Loud
W050009	NE1	6/6/2008	19:50	EIA5106	747-LCF	DEP 34L	Evergreen Airlines/ Boeing	Loud
W050009	NE1	6/6/2008	19:55	BOE905	737-800	T & G 16R	Boeing	Loud
R050001	NW3	6/8/2008	01:41	SWA8508	737-700	ARR 16R	Southwest/ATS	Loud, Late
D970007	NW4	6/8/2008	16:30	n/a	n/a	Pattern Work	could not be traced	Banking Low over Harbour Pointe
F930013	SE4	6/9/2008	01:53	DAL9935	757-200	ARR 34L	Delta/ATS	Low
D970007	NW4	6/9/2008	08:00	EIA406	747-LCF	DEP 16R	Evergreen Airlines/ Boeing	Louder than normal
E070003	SE4							
E070003	SE4	6/10/2008	10:33	VENUS93	757-200	DEP 16R	Air Force/Goodrich	Out of Flight Path
E070003	SE4	6/10/2008	17:05	EIA406	747-LCF	DEP 16R	Evergreen Airlines/ Boeing	General Complaint
B050019	NW1	6/10/2008	20:45	BOE563	n/a	Low APP 16R	Boeing	Too Loud
B050019	NW1	6/10/2008	20:46	n/a	n/a	2 Engine Trims	could not be traced	General Complaint
F930013	SE4	6/12/2008	09:27	EIA5109	747-LCF	DEP 16R	Evergreen Airlines/ Boeing	Noisy, Low, Out of Flight Path
E070003	SE4							
E070003	SE4	6/12/2008	10:00	N727LL	727-700	DEP 16 R	Private Owner/ATS	General Complaint
W980009	NW4	6/12/2008	15:19	JT049	C-9	DEP 16R	Navy/ATS	Noisy
E070003	SE4	6/12/2008	15:30	RS115	C-9	Low APP 16R	Navy	General Complaint
W980009	NW4							
F920008	OTH	6/12/2008	16:00	HAL9981	767-300	DEP 34L	Hawaiian/ATS	General Complaint
D970007	NW4	6/13/2008	19:55	N863CP	C-172	Missed 16R	Private Owner	Sharp Bank, Low
F930013	SE4	6/14/2008	10:44	EIA5186	747-LCF	DEP 16R	Evergreen Airlines/ Boeing	Noisy, Out of Flight Path
E070003	SE4							
E970000	SW2	6/14/2008	10:48	BOE951	737-700	Low APP 16R	Boeing	Loud, Low
F930013	SE4							
W060005	NW1	6/14/2008	12:40	FHC1&2	P-51 & P-47	3 Low APP 34L	Flying Heritage Collection	Constantly circling over house; Fly somewhere else; Still flying over house, will videotape
J080003	NW4							
W060005	NW1							
S070003	SE1	6/14/2008	22:55	N67991	C-152	2 Touch & Go 16L	Private Owner	Noisy, Low, Repetitive
W050009	NE1	6/15/2008	10:31	BOE850	777-300	DEP 34L	Boeing	Roared over house
F930013	SE4	6/15/2008	12:09	EIA461	747-LCF	ARR	Evergreen Airlines/Boeing	Low, Noisy
B050019	NW1	6/15/2008	22:20	AIRLIFT 6	A-A109	Transitioning	Airlift Northwest	Too late, Too Loud
B050020	NW1	6/16/2008	07:52	BOE749	777-300	DEP 34L	Boeing	Shook House
P050006	NW1	6/16/2008	10:55	BOE850	777-300	DEP 34L	Boeing	General Complaint
P050006	NW1	6/16/2008	14:35	BOE566	747-400	DEP 34L	Boeing	Loud
G080000	SW4	6/16/2008	16:00	BOE566	747-400	ARR 34L	Boeing	Too Low, Noisy
F930013	SE4	6/16/2008	20:38	SWA8502	737-700	ARR 34L	Southwest/ATS	Low, Noisy
F930013	SE4	6/19/2008	09:25	EIA5109	747-LCF	DEP 16R	Evergreen Airlines/ Boeing	Noisy, Low
E070003	SE4							
C060002	OTH	6/19/2008	16:31	EIA5141	747-LCF	ARR 34L	Evergreen Airlines/ Boeing	Flew directly over the house
H050014	NE1	6/20/2008	09:05	BOE566	747-400	DEP 34L	Boeing	Shook house
F930013	SE4	6/20/2008	16:20	ALLEN02	E-3	Missed 16R	Air Force	Noisy, Low, Loud Ringing
F930013	SE4							
B050016	NW1							
H050014	NE1							
F930013	SE4	6/20/2008	16:42	n/a	n/a	n/a	could not be traced	Noisy
F930013	SE4	6/20/2008	16:55	N650JL	Cessna Citation	ARR 34L	Private Owner	Noisy
B050019	NW1	6/20/2008	17:30	n/a	n/a	n/a	could not be traced	Out of Flight Path
F930013	SE4	6/20/2008	19:10	n/a	n/a	n/a	could not be traced	Noisy

JUNE 2008

ID	Zone	Date	Time	N#	Aircraft	Activity	Traced To	Complaint
F930013	SE4	6/20/2008	19:18	N183TX	Cessna Citation	DEP 34L	Private Owner	Noisy
Q920001	NW4	6/20/2008	19:45	BOE148	777-200	Low APP 16R	Boeing	General Complaint
L080001	OTH	6/21/2008		X	X	X	X	General Complaint
F930013	SE4	6/22/2008	21:22	AIRLIFT6	A-A109	Transitioning Airspace	Airlift Northwest	Noisy
D970007	NW4	6/23/2008	15:45	AMF1960	Piper Navajo	T n G 34L	Ameri Flight	Low, Loud
D970007	NW4	6/23/2008	19:54	AMF37P	Piper Navajo	ARR 34L	Ameri Flight	Low
W050009	NE1	6/24/2008	07:50	BOE719	767-300	DEP 34L	Boeing	Loud Take off
E070003	SE4	6/24/2008	12:27	BOE566	747-400	DEP 16R	Boeing	Noisy
W980009	NW4							
D970007	NW4	6/24/2008	13:47	EIA5186	747-LCF	DEP 16R	Evergreen Airlines/ Boeing	Loud
E070003	SE4	6/25/2008	13:40	N640ST	Challenger	DEP 34L	Private Owner	General Complaint
E070003	SE4	6/25/2008	14:05	n/a	n/a		could not be traced	General Complaint
K080001	NW1	6/25/2008	14:45	n/a	Helicopter	Pattern Work	could not be traced	Helicopter doing pattern work
F920008	OTH	6/25/2008	14:50	BOE050	777-200	DEP 34L	Boeing	Noisy, Disruptive
S050000	SE1	6/25/2008	14:52	EIA461	747-LCF	ARR 34L	Evergreen Airlines/ Boeing	Low, Loud, Whistling sound
E070003	SE4							
F970001	NW3	6/26/2008	00:45	SWA8501	737-300	ARR 34L	Southwest/ATS	General Complaint
E070003	SE4	6/26/2008	08:05	BOE148	777-200	DEP 16R	Boeing	General Complaint
N050001	SE3	6/27/2008	07:03	AIRLIFT6	A-A109	Transitioning	Airlift Northwest	Noisy
E070003	SE4	6/27/2008	11:05	N183TX	Cessna Citation	ARR 34L	Private Owner	General Complaint
S050014	SW1	6/27/2008	12:00	BOE38F	T-38	4 Touch & Go 34L	Boeing	General Complaint
Q920001	NW4							
F930013	SE4	6/27/2008	14:15	n/a	n/a	n/a	could not be traced	Noisy
F930013	SE4	6/27/2008	23:46	DAL9935	757-200	ARR 34L	Delta/ATS	Low, Noisy
S060003	NW4	6/28/2008	00:45	DAL9935	757-200	DEP 34L	Delta/ATS	Loud
S060003	NW4	6/28/2008	21:50	SWA8503	737-700	DEP 16R	Southwest/ATS	Loud Jet
F930013	SE4	6/29/2008	17:52	SWA8750	737-300	ARR	Southwest/ATS	Loud
F930013	SE4	6/30/2008	11:59	n/a	n/a	n/a	could not be traced	Noisy
E070003	SE4	6/30/2008	12:05	n/a	n/a	n/a	could not be traced	General Complaint
D970007	NW4	6/30/2008	15:15	n/a	EA-6B	Missed 16R	Navy	Loud, making her animals go %*\$# crazy!!
Q920001	NW4							
S040003	NW1							
P050006	NW1	6/30/2008	16:00	UAE777	777-LR	DEP 34L	UAE/Boeing	Loud Departure
P050006	NW1	6/30/2008	16:02	SWA8750	737-300	DEP 34L	Southwest	Loud Departure
T080000	NW4	6/30/2008	18:15	X	X	X	X	General Complaint
T080001	NW4	6/30/2008	23:05	N262R	Pilatus PC-12	ARR 34L	Private Owner	General Complaint

Paine Field - Snohomish County Airport
3220 100th St SW Suite A

