

Monthly Noise Summary

PAIN FIELD AIRPORT • 3220 100TH ST SW • EVERETT, WA 98204
 NOISE HOTLINE: 425-353-2110 x1

MAY 2008

INSIDE THIS ISSUE:

Article	Page
Monthly Summary Recording Noise Complaints	1
Monthly Flight Operations Noise Complaints Filed by Noise Quadrant Monthly Operations Levels 2005-2008	2
Noise Complaints	3
Noise Complaints	4

SUMMARY

During May 2008, the Airport Office received 85 noise related calls from individuals in the surrounding communities. All 85 of those calls were complaints regarding flight operations. 48% of the complaints were filed by 3 individuals.

Noise calls are received via telephone hotline (425-353-2110 x1) or through the airport web page noise complaint form (www.painefield.com/noise/noiseform.html),

Upon receipt, all complaints are investigated. The FAA retains radar data for 3 days before providing it to the airport's AIRSCENE noise monitoring system. Airport staff uses the AIRSCENE data and other sources to help identify which operations generated the complaint. The operator is notified of the complaint and made aware of the airport's noise abatement program. Callers who specifically request to be contacted are called back.

The monthly noise summary will be posted online at www.painefield.com the third week of the following month.

Caller Identification Codes are found on pages 3 and 4 to identify the individuals who made each call. Callers will find their ID number on the mailing label. Some of the aircraft events listed on page 3 are presumed to have originated and/or completed their flight at an airport other than Paine Field.

After the individual complaint listings you will find a graphic representing the 16 noise sub-quadrants located around Paine Field. The graphic also depicts where Paine Field's three noise monitors are located.

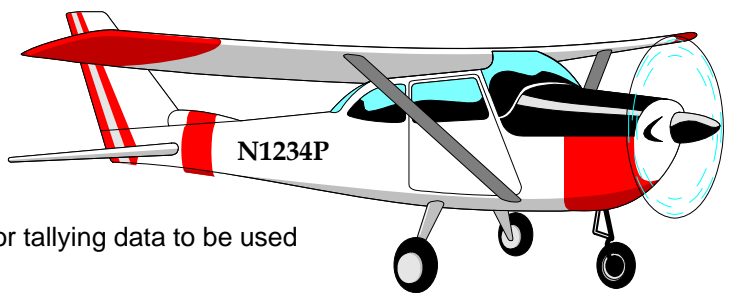
In addition to this monthly noise report, you will find a copy of Snohomish County Airport's monthly tenant newsletter, *Paine Field Happenings*. The newsletter is sent to all airport tenants and users and is also found on our website at: www.painefield.com/happenings

RECORDING NOISE COMPLAINTS

Your noise calls are important to us. If there are flight operations taking place which are not ordinary such as very low altitude operations, or repetitive overflights by jets, please do call in. However, if you see an ordinary aircraft taking off or landing, which seem to be abiding by reasonable standards, please be aware that the airport is here to accommodate aircraft. The airport is not collecting or tallying data to be used for any other purpose other than tracking your concern.

In filing your noise complaints, please state your name, address, phone number, and the information pertaining to your concern. For those who have filed a noise complaint before, it is okay to just state your full name. The more complete your information, the better the chance of it being helpful in identifying the aircraft.

To help identify small propeller aircraft, please give a description of the aircraft (color, "N" number. Small, Large, Jet) with the "N" number of N1234P.

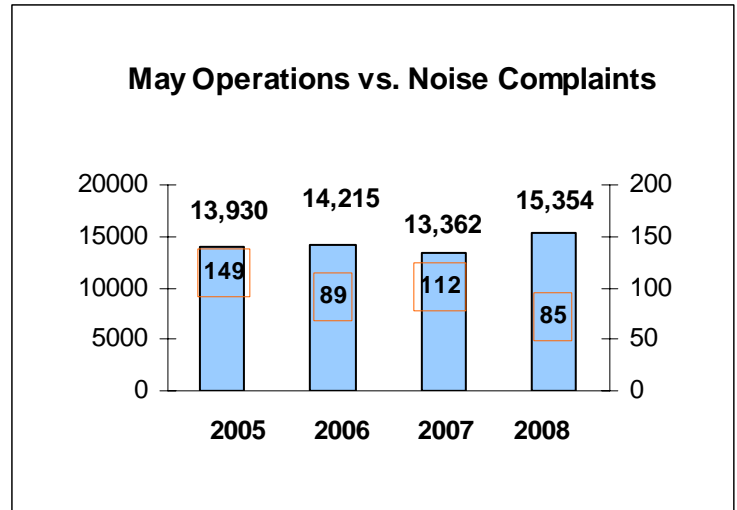


MAY 2008 MONTHLY FLIGHT OPERATIONS

During May 2008, the FAA Paine Field Air Traffic Control Tower recorded 15,354 flight operations. This is a 15% increase in operations from May 2007 which had 13,362 operations.

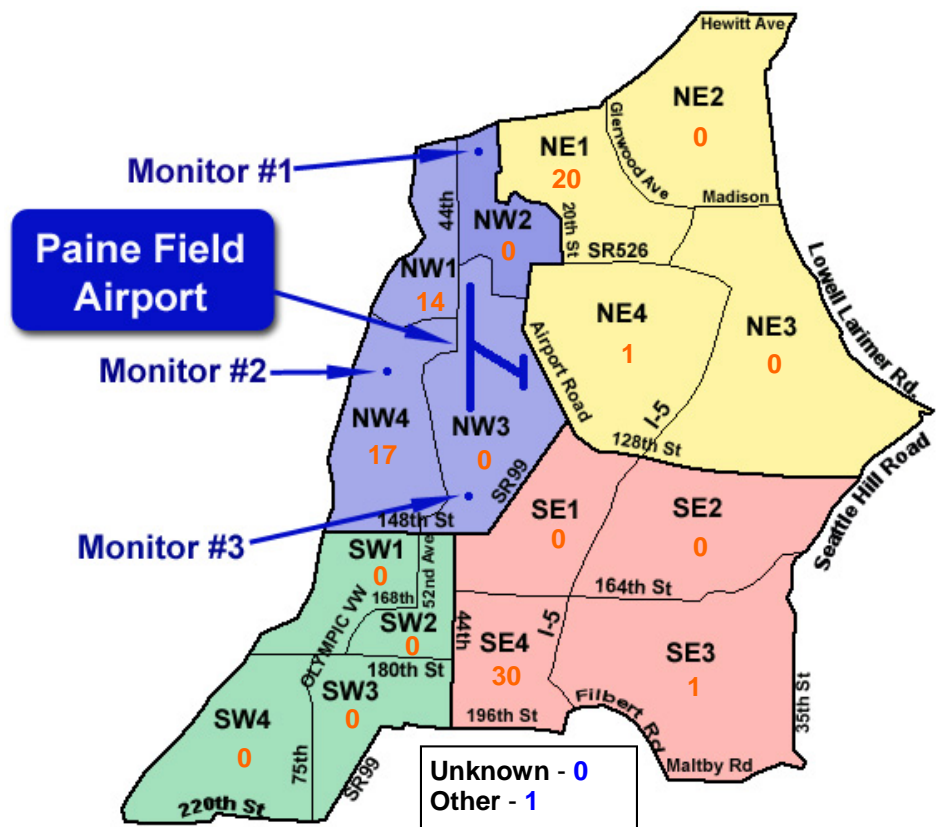
The four-year average number of flight operations for the month of May is 14,215. Total operations for May 2008 are 8% above the four-year average.

The graph shows operations compared to number of noise complaints for the years 2005, 2006, 2007 and 2008 during the month of May.

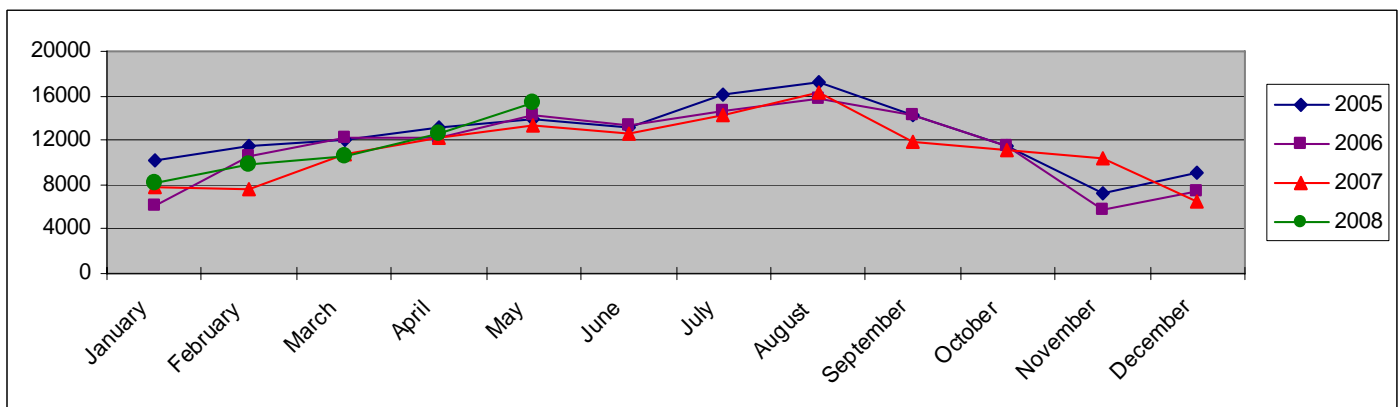


NOISE QUADRANTS

The graphic on the right depicts Paine Field's 16 noise quadrants and the locations of the three noise monitors. The orange numbers within each quadrant represent how many calls were made from that quadrant in the month of May. "Unknown" represents complaints where the caller's quadrant was not identified. "Other" represents complaints from outside the four quadrants.



MONTHLY OPERATIONS LEVELS 2005—2008



MAY 2008 NOISE COMPLAINTS

You can find your Caller Identification Number on your mailing label.

ID	Zone	Date	Time	N#	Aircraft	Activity	Traced To	Complaint
W050009	NE1	5/1/2008	09:27	BOE748	777-300	DEP 34L	Boeing	Shook Windows
F920008	OTH	5/1/2008	19:40	BOE926	737-800	Low APP 16R	Boeing	Loud, Low
W050009	NE1	5/2/2008	08:38	EIA5180	747-LCF	ARR 16R	Evergreen Airlines/Boeing	Loud, Low
E070003	SE4	5/2/2008	13:12	UPS9416	757-200	ARR 34L	UPS/ATS	Loud, Low
E070003	SE4	5/2/2008	15:55	EIA5141	747-LCF	ARR 34R	Evergreen Airlines/Boeing	Loud, Low
F930013	SE4	5/2/2008	16:55	NAVYJS266	C-9	ARR 34L	Navy/ATS	Low, Noisy
A980002	NW1	5/3/2008	00:43	EIA5106	747-LCF	DEP 34L	Evergreen Airlines/Boeing	Shook the House
F930013	SE4	5/4/2008	19:13	N859PL	Pilatus PC-12	ARR 34L	Private Owner	Noisy
W050009	NE1	5/5/2008	08:03	EIA5104	747-LCF	DEP 34L	Evergreen Airlines/Boeing	Loud
F930013	SE4	5/5/2008	10:59	BOE114	737-800	Low APP 16R	Boeing	Low, Noisy
F930013	SE4	5/5/2008	16:22	N60SF	Cessna Citation	ARR 34L	Private Owner	Noisy
W980009	NW4	5/9/2008	13:03	EIA461	747-LCF	ARR 34L	Evergreen Airlines/Boeing	Noisy
W050009	NE1	5/10/2008	09:40	BOE581	747-400	DEP 34L	Boeing	Loud
H050014	NE1	5/10/2008	11:49	BOE581	747-400	ARR 16R	Boeing	Over Neighborhood
E070003	SE4	5/11/2008	09:29	EIA5109	747-LCF	DEP 16R	Evergreen Airlines/Boeing	Low, Noisy
F930013	SE4							
E070003	SE4	5/12/2008	10:30	BOE374	737-800	T & G 16R	Boeing	Loud, Low
S960003	NW4	5/12/2008	22:20	N2438E	C-172	3 ARR 16R	Private Owner	Low
W050009	NE1	5/13/2008	07:45	EIA5186	747-LCF	ARR 16R	Evergreen Airlines/Boeing	Loud
W050009	NE1	5/13/2008	08:10	N579UP	747-400	ARR 16R	UPS/ATS	Loud
L060002	NW4	5/14/2008	18:00	ALLEN02	E-3	T & G 16R	Air Force	Low, Loud
E070003	SE4							
E070003	SE4							
W980009	NW4	5/14/2008	20:15	BOE712	737-700	T & G 16R	Boeing	Noisy
H930025	NE4	5/14/2008	22:00	n/a	n/a	n/a	could not be traced	Back and forth over house
F930013	SE4	5/15/2008	15:23	BOE707	777-300	ARR 34L	Boeing	Low, Noisy
M040003	NW1	5/16/2008	02:15	N327SW	737-700	DEP 34L	Southwest/ATS	Loud, Late
F930013	SE4	5/16/2008	17:51	BOE9990	767-300	ARR 34L	Boeing	Low, Noisy
E070003	SE4	5/16/2008	18:15	BOE661	737-800	T & G 16R	Boeing	Loud, Low, Out of Flight Path
S030006	NW4	5/17/2008	08:35	N7551T	P-51	DEP 16R	General Aviation Day	Low, Loud
W980009	NW4	5/17/2008	10:45	N342PA	727-200	ARR 16R	Private Owner	Noisy
E070003	SE4	5/17/2008	12:15	N342PA	727-200	DEP 16R	Private Owner	Loud, Low Over House
D970007	NW4							
D970007	NW4	5/17/2008	12:59	N7551T	P-51	DEP 16R	General Aviation Day	Loud
W050009	NE1	5/17/2008	21:32	DAL9900	767-300	DEP 16R	Delta/ATS	Thundering over house
M070001	SE4	5/17/2008	22:32	SWA8507	737-300	ARR 34L	Southwest/ATS	Loud, Low, Late
B050019	NW1	5/18/2008	01:18	SWA8506	737-300	DEP 34L	Southwest/ATS	Loud, Too Late Over House
H050014	NE1	5/18/2008	08:40	USA205	DC-9	ARR 16R	USA Jet Airlines	Loud, Low Over Neighborhood
F930013	SE4	5/18/2008	10:17	USA205	DC-9	DEP 16R	USA Jet Airlines	Noisy
D970007	NW4							
E070003	SE4	5/19/2008	9:30	EIA409	747-LCF	DEP 16R	Evergreen Airlines/Boeing	Out of Flight Path, Noisy, Low
W980009	NW4							
F930013	SE4							
E070003	SE4	5/19/2008	16:15	BOE548	777-200	T & G 16R	Boeing	Loud, Low Over House
F930013	SE4	5/20/2008	08:08	N89LS	Cessna Citation	DEP 16R	Private Owner	Noisy
W980009	NW4	5/20/2008	12:16	BOE707	777-300	Low APP 16R	Boeing	Noisy
F930013	SE4	5/20/2008	16:40	BOE367	737-700	T & G 16R	Boeing	Low, Noisy
H050014	NE1	5/21/2008	08:15	EIA480	747-LCF	ARR 16R	Evergreen Airlines/Boeing	Loud
S050005	NW4	5/21/2008	17:51	NJS266	C-9	ARR 34L	Navy	Loud, Low
G040001	NW4	5/22/2008	03:15	SWA8506	737-300	DEP 34L	Southwest/ATS	Awoken, Too Early
W980009	NW4	5/22/2008	09:25	BOE803	777-300	DEP 16R	Boeing	Noisy
P050006	NW1	5/22/2008	17:00	EIA406	747-LCF	DEP 34L	Evergreen Airlines/Boeing	Loud
H030004	NW4	5/22/2008	17:28	ALLEN02	E-3	T & G 34L	Air Force	Low
W050009	NE1	5/22/2008	22:11	N398LS	Cessna Citation	DEP 34L	Private Owner	Loud
H050014	NE1	5/23/2008	17:00	EIA406	747-LCF	DEP 34L	Evergreen Airlines/Boeing	Loud, Shook House
P050006	NW1							
P050006	NW1	5/23/2008	17:10	CPA3331	747-400	DEP 34L	Cathay Pacific/Boeing	Shook Windows
W050009	NE1	5/24/2008	09:06	BOE477	747-400	DEP 34L	Boeing	Loud

MAY 2008 NOISE COMPLAINTS

You can find your Caller ID Number on your mailing label

ID	Zone	Date	Time	N#	Aircraft	Activity	Traced To	Complaint
F930013	SE4	5/24/2008	11:00	BOE477	747-400	T & G 16R	Boeing	Low, Noisy
W050009	NE1							
W050009	NE1	5/25/2008	08:45	BOE477	747-400	DEP 34L	Boeing	Loud
W050009	NE1	5/25/2008	11:29	BOE477	747-400	ARR 16R	Boeing	Loud
H050014	NE1	5/26/2008	08:57	BOE909	767-300	DEP 34L	Boeing	Loud, Shook House
E070003	SE4	5/26/2008	11:45	SONIC41	C-17	Missed 16R	Air Force	Loud
E070003	SE4	5/26/2008	15:37	BOE477	747-400	DEP 16R	Boeing	Out of Flight Path
F930013	SE4	5/27/2008	09:18	BOE539	777-300	DEP 16R	Boeing	Low, Noisy
F930013	SE4	5/27/2008	16:13	EIA441	747-LCF	ARR 34L	Evergreen Airlines/Boeing	Low, Noisy
E070003	SE4	5/28/2008	12:15	N296SB	Challenger 100	ARR 34L	Private Owner	General Complaint
H050014	NE1	5/28/2008	15:52	DAL9901	767-300	DEP 34L	Delta/ATS	Loud
P050006	NW1	5/28/2008	17:27	EIA406	747-LCF	DEP 34L	Evergreen Airlines/Boeing	Loud
E070003	SE4	5/29/2008	12:45	EVA711	777-300	DEP 16R	EVA Airlines/Boeing	General Complaint
H050014	NE1	5/29/2008	18:04	BOE885	737-800	T & G 16R	Boeing	General Complaint
N050001	SE3	5/29/2008	21:44	n/a	Helicopter	n/a	could not be traced	Low, Shook House
T080001	NW4	5/30/2008	09:18	UPS9447	757-200	DEP 16R	UPS/ATS	General Complaint
E070003	SE4	5/30/2008	12:30	BOE615	737-800	T & G 16R	Boeing	Loud, Low
W980009	NW4							
G950002	NW1	5/31/2008	13:45	N6132G	C-172	DEP 34L	Regal Air	Buzzing House
G950002	NW1	5/31/2008	13:45	N738SE	C-172	DEP 29	Regal Air	Buzzing House
H050014	NE1	5/31/2008	14:30	BOE164	747-400	DEP 34L	Boeing	Rattled Windows
B050019	NW1	5/31/2008	18:30	N686SP	C-172	4 T & G 34R	Private Owner	Loud, Back and forth over house
B050019	NW1	5/31/2008	18:50	N54983	C-172	2 Missed APP 16R	Private Owner	Loud, Back and forth over house
B050019	NW1	5/31/2008	18:54	N686SP	C-172	4 T & G 34L	Private Owner	Loud, Back and forth over house
B050019	NW1	5/31/2008	19:15	N686SP	C-172	3 T & G 34R	Private Owner	Loud, Back and forth over house
B050019	NW1	5/31/2008	23:49	SWA8504	737-300	DEP 34L	Southwest/ATS	Loud, Late

Paine Field - Snohomish County Airport
3220 100th St SW Suite A
Everett, WA 98204

