

Monthly Noise Summary

PAIN FIELD AIRPORT • 3220 100TH ST SW • EVERETT, WA 98204
 NOISE HOTLINE: 425-353-2110 x1

JANUARY 2008

INSIDE THIS ISSUE:

Article	Page
Monthly Summary	1
Recording Noise Complaints	1
Monthly Flight Operations	2
Noise Complaints Filed by Noise Quadrant	2
Noise Complaints	3
Monthly Operations Levels 2005-2008	4

SUMMARY

During January 2008, the Airport Office received 53 noise related calls from individuals in the surrounding communities. 50 of those calls were complaints regarding flight operations, 17 of the complaints were filed by 1 individual.

Noise calls are received via telephone hotline (425-353-2110 x1) or through the airport web page noise complaint form (www.painefield.com/noise/noiseform.html), upon receipt they are investigated. The FAA retains radar data for 3 days before providing it to the airport's AIRSCENE noise monitoring system. Airport staff uses the AIRSCENE data and other sources to help identify which operations generated the complaint. The operator is notified of the complaint and made aware of the airport's noise abatement program. Callers who specifically request to be contacted are called back and all who file complaints are provided a copy of the monthly noise summary which identifies the disposition of the complaint. The monthly noise

summary is normally mailed in the third week of the following month.

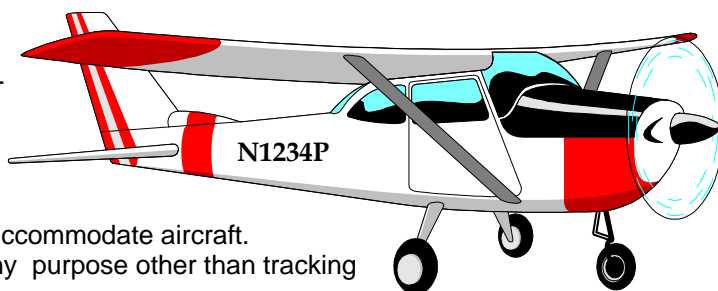
Caller Identification Codes are found on page 3 to identify the individuals who made each call. Callers will find their ID number on the mailing label. Some of the aircraft events listed on page 3 are presumed to have originated and/or completed their flight at an airport other than Paine Field.

After the individual complaint listings you will find a graphic representing the 16 noise sub-quadrants located around Paine Field. The graphic also depicts where Paine Field's three noise monitors are located.

In addition to this monthly noise report, you will find a copy of Snohomish County Airport's monthly tenant newsletter, *Paine Field Happenings*. The newsletter is sent to all airport tenants and users and is also found on our website at: www.painefield.com/happenings/pfh_pdf/0208/pdf

RECORDING NOISE COMPLAINTS

Your noise calls are important to us. If there are flight operations taking place which are not ordinary such as very low altitude operations, or repetitive overflights by jets, please do call in. However, if you see an ordinary aircraft taking off or landing, which seem to be abiding by reasonable standards, please be aware that the airport is here to accommodate aircraft. The airport is not collecting or tallying data to be used for any purpose other than tracking your concern.



In filing your noise complaint, please state your name, address, phone number, and the information pertaining to your concern. For those who have filed a noise complaint before, it is okay to just state your full name. The more complete your information, the better the chance of it being helpful in identifying the aircraft.

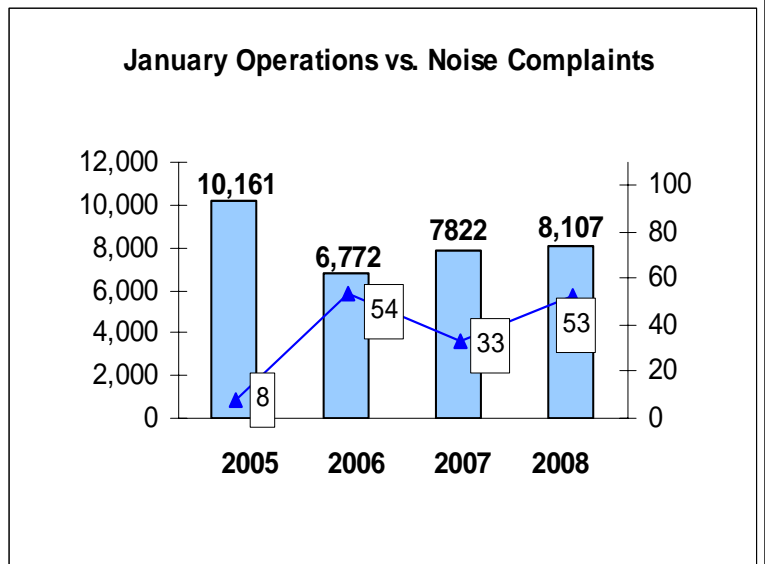
To help identify small propeller aircraft, please give a description of the aircraft (i.e. color, # of engines, and N-Number)

JANUARY 2008 MONTHLY FLIGHT OPERATIONS

During January 2008, the FAA Paine Field Air Traffic Control Tower recorded 8,107 flight operations. This is a 4% increase in operations from January 2007 which had 7,813 operations.

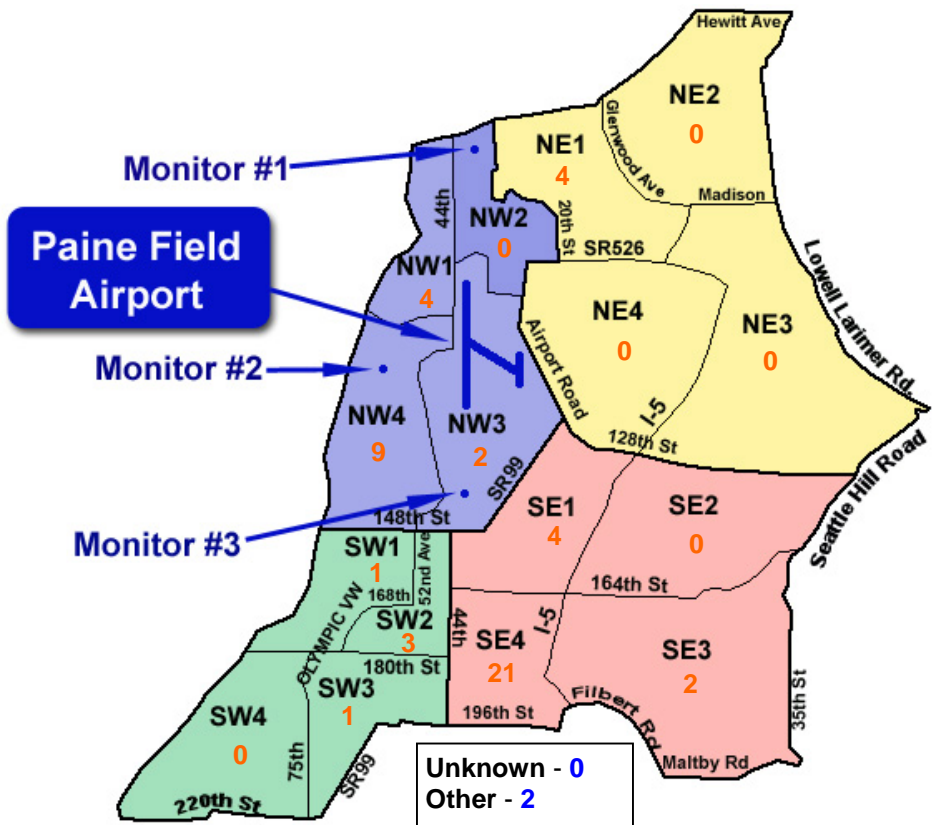
The four-year average number of flight operations for the month of January is 8,062. Total operations for January 2008, are 1% above the four-year average.

The graph shows operations compared to number of noise complaints for the years 2005, 2006, 2007 and 2008 during the month of January.



NOISE QUADRANTS

The graphic on the right depicts Paine Field's 16 noise quadrants and the locations of the three noise monitors. The orange numbers within each quadrant represent how many calls were made from that quadrant in the month of January. "Unknown" represents complaints where the caller's quadrant was not identified. "Other" represents complaints from outside the four quadrants.



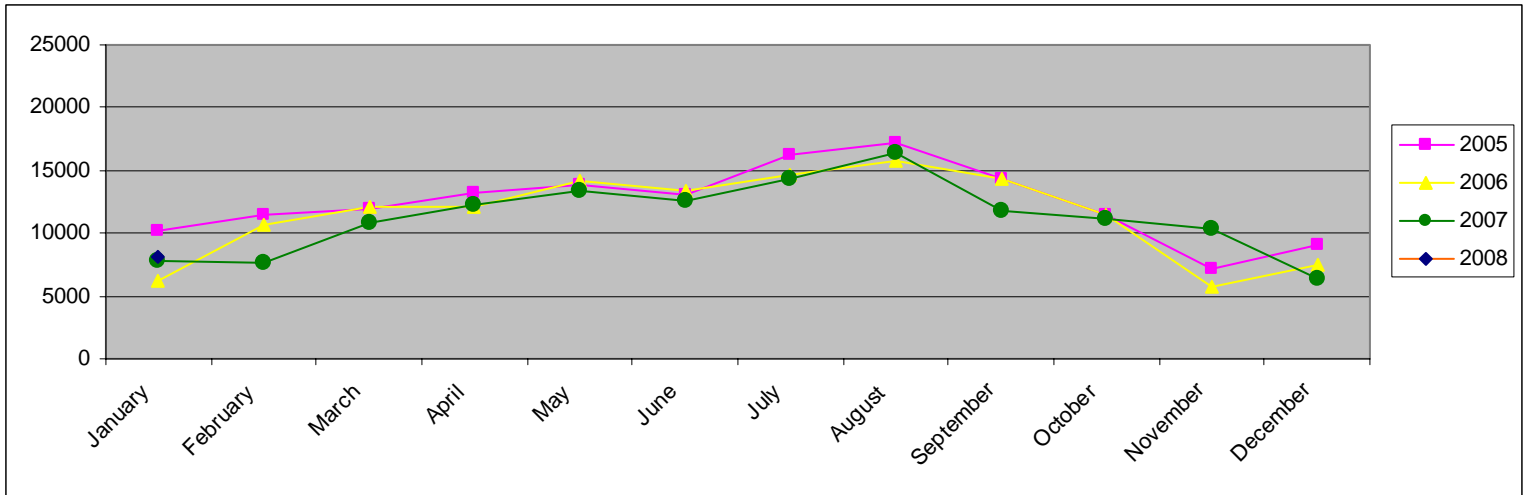
JANUARY 2008 NOISE COMPLAINTS

You can find your Caller Identification Number on your mailing label.

ID	Zone	Date	Time	N#	Aircraft	Activity	Traced To	Complaint
E070003	SE4	1/2/2008	14:15	N183TX	Citation	ARR34L	Private Owner	General Complaint
E070003	SE4	1/3/2008	05:26	N183TX	Citation	ARR 34L	Private Owner	General Complaint
E970000	SW2	1/3/2008	08:00	EIA5104	747-LCF	DEP 16R	Evergreen Airlines/Boeing	Loud, Low
E070003	SE4							
S050000	SE1							
F930013	SE4	1/3/2008	15:15	N525PH	C25	ARR 16R	Private Owner	Noisy, Very Loud
E970000	SW2	1/4/2008	10:01	EIA5104	747-LCF	DEP 16R	Evergreen Airlines/Boeing	Loud,Low
E070003	SE4							
S050014	SW1	1/5/2008	12:05	N83CW	G5	T & G 16R	Private Owner	Loud
E070003	SE4	1/5/2008	12:05	BOE034	777-200	DEP 16R	Boeing	General Complaint
S070005	SW2	1/6/2008	10:17	EIA5109	747-400	DEP 16R	Evergreen Airlines/Boeing	Loud & Low
B080000	SE3	1/6/2008	22:05	AIRLIFT6	Agusta A-109	Transitioning Airspace	Airlift Northwest	Low, after 10pm
B050020	NW1	1/7/2008	20:30	X	777	Engine Run	Boeing	Loud
S080000	OTH	1/7/2008	21:25	n/a	n/a	Engine Run	could not be traced	Loud, for 2.5 hrs
W980009	NW4	1/10/2008	13:13	BOE108	767-200	DEP 16R	Boeing	Loud
S050000	SE1	1/10/2008	22:06	n/a	n/a	n/a	could not be traced	Loud,Low
B050019	NW1	1/10/2008	23:10	SWA8506	737-300	ARR 16R	Southwest/Goodrich	Loud
E070003	SE4	1/11/2008	13:45	n/a	n/a	n/a	could not be traced	General Complaint
Y060000	NE1	1/12/2008	04:30	HAL8020	767-300	ARR 16R	Hawaiian/Goodrich	Early
E070003	SE4	1/12/2008	11:45	N738BU	Cessna 172	T & G 16R	Private Owner	General Complaint
K080000	OTH	1/14/2008	03:00	n/a	helicopter	n/a	could not be traced	hovering
S050000	SE1	1/14/2008	09:06	BOE572	777-300	DEP 16R	Boeing	Loud & Low
S050000	SE1	1/14/2008	10:38	n/a	n/a	n/a	could not be traced	Loud, Low
E070003	SE4	1/14/2008	11:10	BOE847	777-300	ARR 34L	Boeing	General Complaint
J950001	SW3	1/14/2008	14:27	BOE008		DEP 16R	Boeing	Too Low
E070003	SE4	1/16/2008	07:25	EIA5109	747-LCF	DEP 16R	Evergreen Airlines/ Boeing	General Complaint
W060001	NW3							
N070003	NW3							
E070003	SE4	1/17/2008	12:10	BOE572	777-300	DEP 16R	Boeing	General Complaint
W080000	NW1	1/19/2008	23:38	n/a	n/a	Engine Run	could not be traced	Loud
Y060000	NE1	1/20/2008	01:05	EIA5180	747-LCF	ARR16R	Evergreen Airlines/Boeing	Early
Y060000	NE1	1/20/2008	04:20	EIA5106	747-LCF	DEP16R	Evergreen Airlines/ Boeing	Early
W980009	NW4							
P080001	NW4	1/20/2008	15:00	n/a	n/a	buzzing aircraft	could not be traced	Low, buzzing aircraft
W980009	NW4	1/22/2008	09:27	BOE801	777-300	ARR 16R	Boeing	Loud
E070003	SE4	1/23/2008	03:10	n/a	n/a	n/a	could not be traced	General Complaint
E070003	SE4	1/24/2008	14:10	N435SP	Cessna 172	Missed 16R	Private Owner	General Complaint
W980009	NW4	1/24/2008	14:10	BOE516	747-400	T & G 16R	Boeing	Loud & Low
E070003	SE4							
W980009	NW4	1/25/2008	08:25	EIA5506	747-LCF	DEP 16R	Evergreen Airlines/ Boeing	loud
N050001	SE3	1/25/2008	22:00	n/a	Helicopter	n/a	could not be traced	Low, Loud
E070003	SE4	1/26/2008	10:35	EIA5106	747-LCF	DEP 16R	Evergreen Airlines/ Boeing	General Complaint
W970000	NW4	1/27/2008	08:16	EIA5661	747-LCF	ARR16R	Evergreen Airlines/Boeing	Loud & Shook House
F930013	SE4	1/27/2008	15:05	EIA5206	747-LCF	DEP 16R	Evergreen Airlines/Boeing	Loud & Low
F930013	SE4	1/27/2008	15:34	BOE756	737	ARR16R	Boeing	Loud & Low
S060003	NW4	1/28/2008	00:20	EIA5180	747-LCF	APP 16R	Evergreen Airlines/Boeing	Loud
F930013	SE4	1/28/2008	17:40	DAL9935	767-300	ARR 16R	Delta/Goodrich	Noisy, Low
E070003	SE4	1/28/2008	17:41	NU119	DC-9	DEP 16R	Goodrich	General Complaint
B050019	NW1	1/30/2008	0:55	SWA8502	737-300	ARR 16R	Southwest/Goodrich	Loud
Y060000	NE1							
W980009	NW4	1/30/2008	13:37	CTHY3337	777	DEP 16R	Cathay Pacific/Boeing	Noisy
E070003	SE4	1/31/2008	10:48	BOE035	777-200	DEP 16R	Boeing	General Complaint
E070003	SE4	1/31/2008	11:04	JAE7440	747-400	DEP 16R	Jade Cargo/Boeing	General Complaint

JANUARY 2008

Monthly Operations Levels 2005—2008



Paine Field - Snohomish County Airport
3220 100th St SW Suite A
Everett, WA 98204

