

MONTHLY OPERATIONS & NOISE SUMMARY

Paine Field Airport

December 2015

ONLINE AT: <http://www.paineairport.com>

NOISE COMMENT FORM: <http://www.paineairport.com/FormCenter/Noise-Event-Form-3/Noise-Event-Form-43>

NOISE SUMMARY REPORTS: <http://www.paineairport.com/176/Noise-Summary-Reports>

PAINE FIELD HAPPENINGS: <http://www.paineairport.com/177/Paine-Field-Happenings>

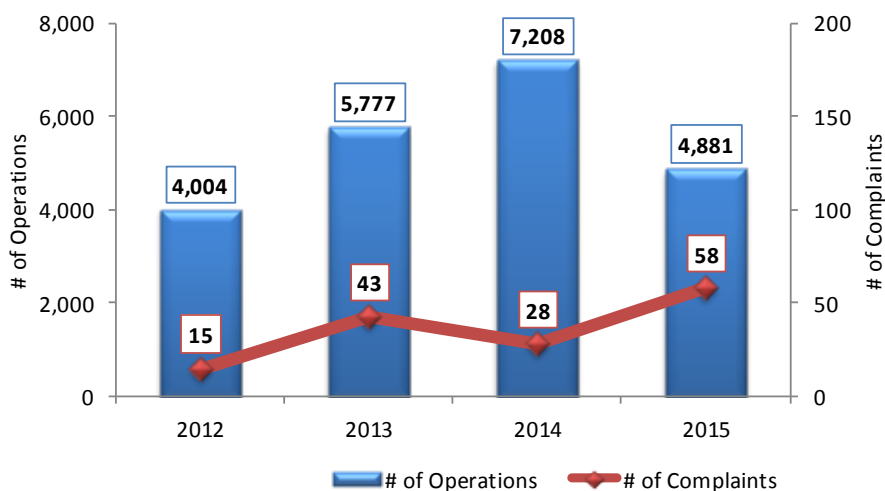
Noise Brief:

During December 2015, the airport office received 58 noise related calls and emails from individuals in the surrounding communities. 1 call was regarding engine runs.

During December 2015, the FAA Paine Field Air Traffic Control Tower recorded 4,881 flight operations. This is a 32.24% decrease in operations from December 2014, which had 7,208 operations.

The four-year average number of flight operations for the month of December is 6,222. Total operations for December 2015 is 22% below the four-year average. 4 callers accounted for 36% of all noise complaints for the month.

December 2012-2015 Operations vs Noise Complaints



Complaints:

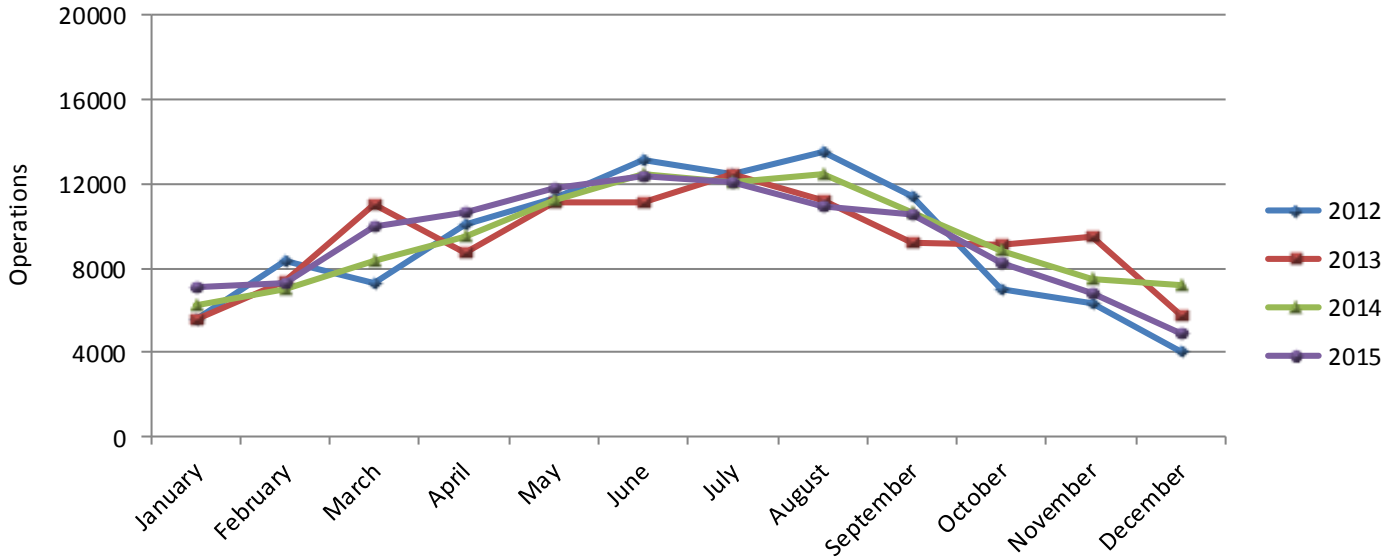
Many factors contribute to the amount of complaints received each month and by how many people. Complaint totals are rarely consistent due to factors ranging from one unusual flight event that generates multiple complaints from a large group of people, an overcast day which blocks in sound, or perhaps a new homeowner that didn't notice the flight paths before the purchase of the property.

PAINE FIELD AIRPORT • 3220 100TH ST. SW SUITE A • EVERETT, WA 98204

NOISE HOTLINE: 425-353-2110 x1

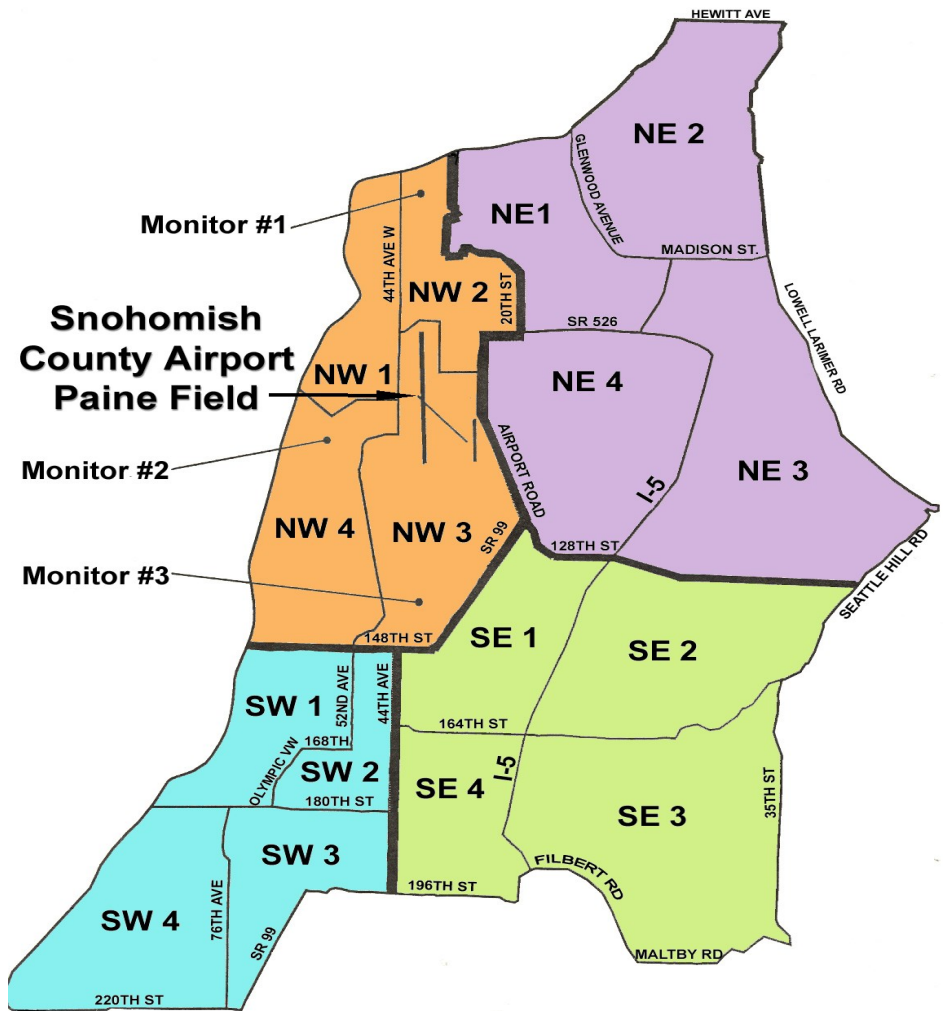
For further information, please call Airport Operations at 425-388-5125

Monthly Operations Levels 2012—2015



Paine Field Community Quadrants

The graphic to the right depicts Paine Field's 16 noise quadrants. The red numbers within each quadrant represent how many calls were made from that quadrant in the month of December. "Unknown" represents complaints where the caller's quadrant was not identified. "Other" represents complaints from outside the four major quadrants.



Caller Complaints

Noise complaints are received via telephone hotline or through the airport web page noise complaint form.

Upon receipt, complaints are investigated. Airport staff uses the ENVIRONMENTAL VUE data and other sources to help identify which operation generated the noise complaint. The FAA retains radar data for three days before providing it to the airport's ENVIRONMENTAL VUE noise monitoring system.

The aircraft operator is then notified of the complaint and made aware of the airport's noise abatement program. Callers who specifically request to be contacted are called back.

Since FAA operations data is not released until the third week of the following month, the monthly

summary report is posted online at paineairport.com the fourth week of the following month.

Caller Identification Codes are listed in the first column of the complaint table. You should be able to identify yourself by the first 3 letters of your last name and the date and time you called in. If you are having trouble identifying your new code, please call the airport office and we will look you up.

Reports will be posted online at the websites listed on the front of this report. The aircraft operations listed on this page (and next) are presumed to have originated or completed their flights at Paine Field.

Caller code	Event Start	Operation	Runway	Flight ID	Aircraft Type	Community
UPH002	12/1/2015 5:00	A	16R	GTI4151	BLCF	NW1
UPH002	12/1/2015 19:12	A	16R	GTI4341	BLCF	NW1
OLS008	12/1/2015 23:15	D	16R	GTI4512	BLCF	NW3
RAP001	12/1/2015 23:50					NW3
WOH002	12/1/2015 23:55					SE1
WOH002	12/1/2015 23:55					SE1
LOF002	12/1/2015 23:55					NW1
UPH002	12/2/2015 13:15	D	16R	VDA1798	AN-124	NW1
UPH002	12/3/2015 2:00		UNK	UNK	UNK	NW1
GEA001	12/3/2015 5:00	A	16R	GTI4352	BLCF	NW4
STE001	12/3/2015 6:44	D	16R	GTI4516	BLCF	SW2
BAD003	12/3/2015 6:50					SE4
MUS003	12/3/2015 7:20	A	16R	GTI4356	BLCF	NW1
PAR007	12/5/2015 0:01	D	16R	SWA8501	B737	NW1
UPH002	12/5/2015 10:30	ENGINE TRIM	N/A	BOEING	B748	NW1
PAR007	12/6/2015 0:01	A	16R	GTI4352	BLCF	NW1
UPH002	12/6/2015 6:40	D	16R	GTI4516	BLCF	NW1
BAD003	12/6/2015 6:47	D	16R			SE4
OLD001	12/8/2015 0:25	D	16R	GTI4532	BLCF	SW1
RAP001	12/8/2015 12:20	D	16R			NW3
MUS003	12/8/2015 16:50	UNK	UNK	GTI4512/4542	BLCF	NW1

Caller code	Event Start	Operation	Runway	Flight ID	Aircraft Type	Community
KUO002	12/9/2015 2:54	D	16R	VDA1783	AN-124	NW3
RAP001	12/9/2015 3:00					NW3
Nei002	12/9/2015 3:00					SW2
WOH002	12/9/2015 3:05					SE1
PAK002	12/11/2015 2:20	D	16R	SWA8508	B733	NW4
GUS002	12/13/2015 7:05	D	16R	GTI4512	BLCF	SW3
PAK002	12/13/2015 7:10					NW4
DOY003	12/14/2015 14:30	A	34L	BOE651	B77W	OTH
RAP001	12/14/2015 21:20	D	16R	GTI4546	BLCF	NW3
STE001	12/14/2015 21:24					SW2
TUS002	12/14/2015 21:24					SE1
OLD001	12/14/2015 21:25					SW1
WOH002	12/16/2015 4:20	A	34L	GTI4352	BLCF	SE1
LEE004	12/16/2015 23:45	A	16R	SWA8507	B737	NW1
LEE004	12/17/2015 0:30	D	34L	SWA8508	B737	NW1
GRE015	12/18/2015 9:48	D	16R	GTI4512	BLCF	OTH - S
MUS003	12/19/2015 5:00	UNK	UNK	UNK	UNK	NW1
PAK002	12/19/2015 7:00	D	16R	AMF1962	B190	NW4
LEE004	12/20/2015 4:45	A	16R	GTI4352	BLCF	NW1
BAD003	12/20/2015 6:55	D	16R	GTI4516	BLCF	SE4
RAP001	12/20/2015 6:55	D	16R		BLCF	NW3
UPH002	12/20/2015 21:00	D	16R	GTI4542	BLCF	NW1
MUS003	12/21/2015 6:40	D	16R	GTI4512	BLCF	NW1
RAP001	12/21/2015 6:40					NW3
BAD003	12/21/2015 6:42					SE4
SMU001	12/21/2015 6:42					NW4
GRE015	12/21/2015 6:43					OTH - S
RAP001	12/22/2015 6:00	D	16R	GTI4532	BLCF	NW3
BAD003	12/22/2015 6:10					SE4
CAN003	12/22/2015 6:48	D	16R	GTI4516	BLCF	OTH-S
BAD003	12/22/2015 6:55					SE4
GRE015	12/22/2015 6:56					OTH - S
KUL001	12/29/2015 12:44	O	N/A	UNKNOWN	F18	NE1
Ale003	12/29/2015 12:45					NE2
SPR003	12/29/2015 12:47					OTH-S
LYO001	12/30/2015 14:08	A	34R	N704CH	RV	NE4
Car013	12/30/2015 14:20	O	UNK	N7190J	R22	NE1

A—Arrival
D—Departure
O—Overflight
UNK—Unknown