

MONTHLY OPERATIONS & NOISE SUMMARY

Paine Field Airport

January 2015

ONLINE AT: <http://www.paineairport.com>

NOISE COMMENT FORM: <http://www.paineairport.com/FormCenter/Noise-Event-Form-3/Noise-Event-Form-43>

NOISE SUMMARY REPORTS: <http://www.paineairport.com/176/Noise-Summary-Reports>

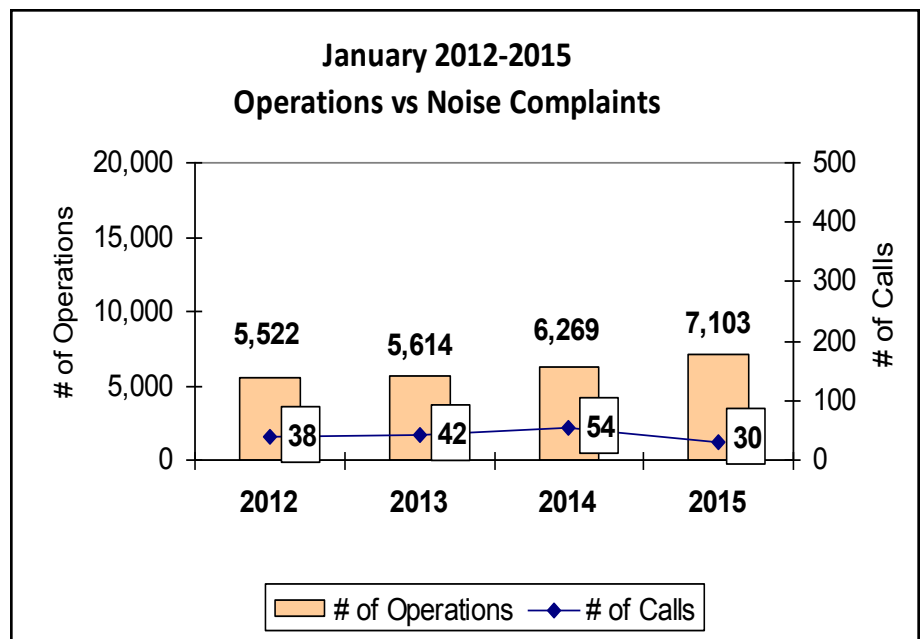
PAINE FIELD HAPPENINGS: <http://www.paineairport.com/177/Paine-Field-Happenings>

Noise Brief:

During January 2015, the airport office received 30 noise related calls and emails from individuals in the surrounding communities. No call was regarding engine runs.

During January 2015, the FAA Paine Field Air Traffic Control Tower recorded 7,103 flight operations. This is a 13.3% increase in operations from January 2014, which had 6,269 operations.

The four-year average number of flight operations for the month of January is 6,127. Total operations for January 2015 is 13.7% above the four-year average. 2 callers accounted for 50% of all noise complaints for the month.



Complaints:

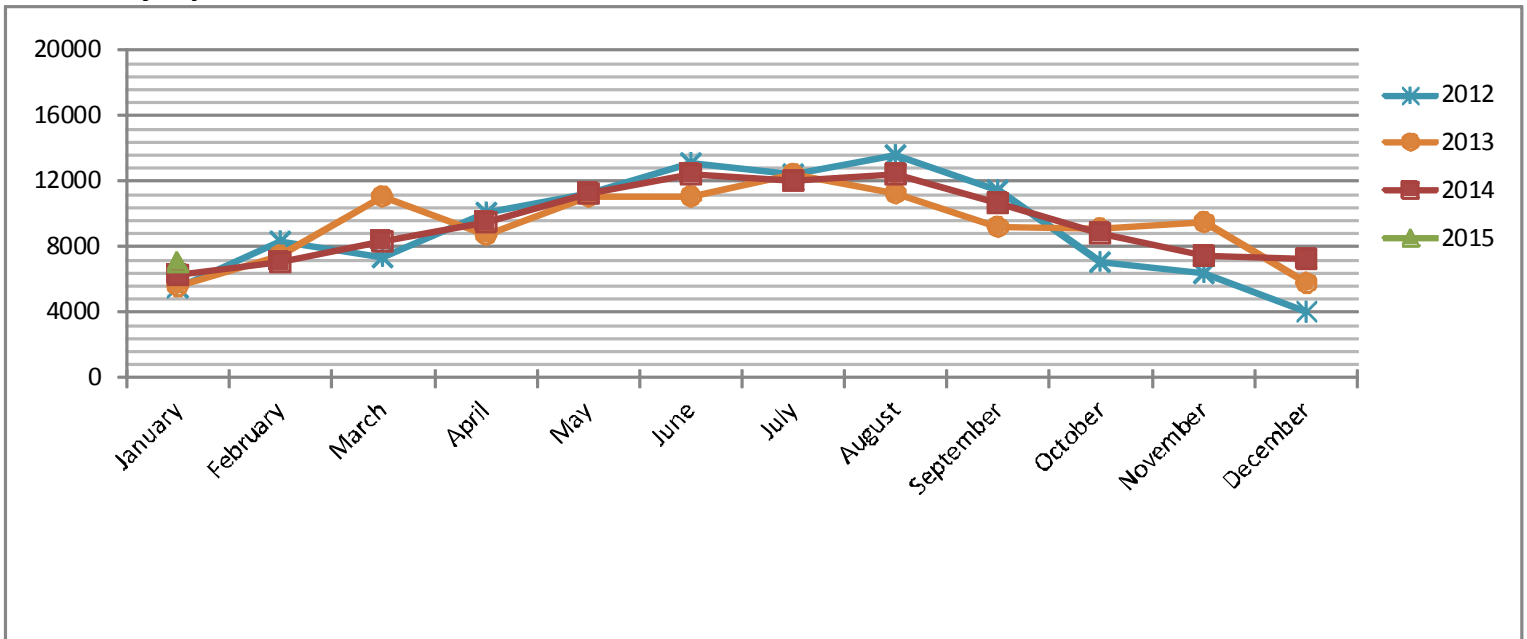
Many factors contribute to the amount of complaints received each month and by how many people. Complaint totals are rarely consistent due to factors ranging from one unusual flight event that generates multiple complaints from a large group of people, an overcast day which blocks in sound, or perhaps a new homeowner that didn't notice the flight paths before the purchase of the property.

PAINE FIELD AIRPORT • 3220 100TH ST. SW SUITE A • EVERETT, WA 98204

NOISE HOTLINE: 425-353-2110 x1

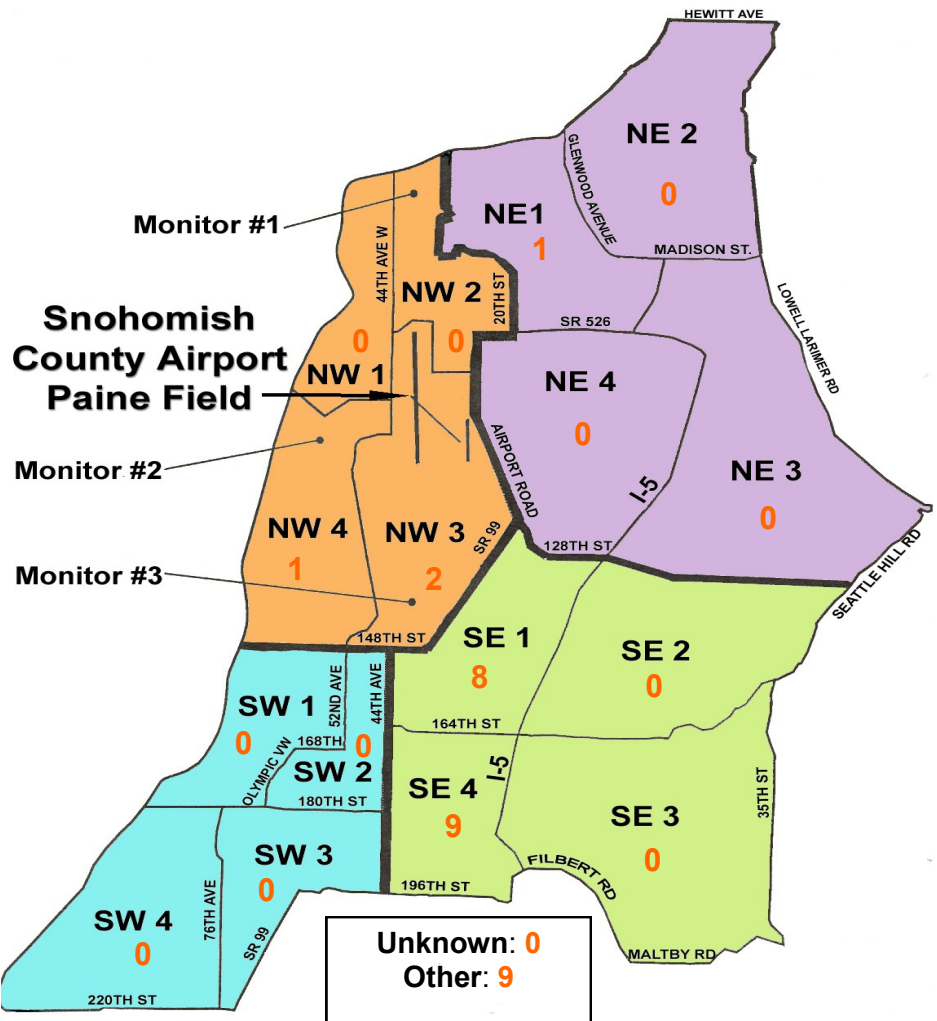
For further information, please call Airport Operations at 425-388-5125

Monthly Operations Levels 2012—2015



Paine Field Community Quadrants

The graphic to the right depicts Paine Field's 16 noise quadrants. The red numbers within each quadrant represent how many calls were made from that quadrant in the month of January. "Unknown" represents complaints where the caller's quadrant was not identified. "Other" represents complaints from outside the four major quadrants.



Caller Complaints

Noise complaints are received via telephone hotline or through the airport web page noise complaint form.

Upon receipt, complaints are investigated. Airport staff uses the AIRSCENE data and other sources to help identify which operation generated the noise complaint. The FAA retains radar data for three days before providing it to the airport's AIRSCENE noise monitoring system.

The aircraft operator is then notified of the complaint and made aware of the airport's noise abatement program. Callers who specifically request to be contacted are called back.

Since FAA operations data is not released until the third week of the following month, the monthly

summary report is posted online at paineairport.com the fourth week of the following month.

Caller Identification Codes are listed in the first column of the complaint table. You should be able to identify yourself by the first 3 letters of your last name and the date and time you called in. If you are having trouble identifying your new code, please call the airport office and we will look you up.

First time callers will receive a one-time hard copy mailing of this monthly noise summary. After the initial mailing, future reports will be posted online at the websites listed on the front of this report. The aircraft operations listed on this page (and next) are presumed to have originated or completed their flights at Paine Field.

Caller Code	Date/Time	Operation	Runway	Flight ID	Aircraft Type	Comments	Community
EST002	1/2/2015 23:45	DEP	34L	GTI4512	747-LCF		NE1
TUS001	1/6/2015 0:08	DEP	16R	GTI4542	747-LCF		SE1
WOH002	1/6/2015 0:10						SE1
GRE015	1/7/2015 15:23	DEP	16R	GTI4512	747-LCF		OTH - S
GRE015	1/7/2015 16:10	ARR	34L	GTI4151	747-LCF		OTH - S
FIS001	1/9/2015 17:06	DEP	16R	AJI9186	DC-91	Low and Loud	SE4
WOH002	1/14/2015 22:50	DEP	16R	GTI4542	747-LCF	Low and Loud	SE1
FIS001	1/14/2015 22:51						SE4
WOH002	1/15/2015 4:55	DEP	16R	JBU6433	A-320	Early morning	SE1
WOH002	1/15/2015 6:25	DEP	16R	CSN777	777-L	Early morning	SE1
GRE015	1/15/2015 12:05	ARR	16R	BOE171	777-200		OTH - S
GRE015	1/15/2015 12:30	DEP	16R	BOE444	777-300ER	Flying too low	OTH - S
FIS001	1/16/2015 10:08	DEP	16R	GTI4536	747-LCF	Low and loud	SE4
RAP001	1/16/2015 10:08						NW3
GRE015	1/17/2015 11:40	T/G	16R	BOE667	737-800		OTH-S
GRE015	1/18/2015 11:04	DEP	16R	GTI4512	747-LCF	Loud and Low	OTH - S
COO009	1/18/2015 11:08						NW3
FIS001	1/18/2015 11:08						SE4
FAH001	1/20/2015 16:12	UNK	UNKN	UNKN	UNKN	Low	OTH
ADA006	1/21/2015 17:08	DEP	16R	BOE479	787-8		OTH
FIS001	1/22/2015 13:55	DEP	16R	GTI4512	747-LCF	Low and Loud	SE4
LEM001	1/23/2015 9:09	DEP	16R	GTI4532	747-LCF		OTH
WOH002	1/24/2015 5:25	DEP	16R	JBU6417	A-320		SE1
FIS001	1/26/2015 20:47	DEP	16R	GTI4542	747-LCF	Low and Loud	SE4
FIS001	1/27/2015 10:45	DEP	16R	GTI4512	747-LCF	Low and Loud	SE4
FIS001	1/28/2015 17:06	DEP	16R	GTI4542	747-LCF		SE4
WOH002	1/29/2015 23:40	ARR	34L	SWA850 5	737-300		SE1
FIS001	1/29/2015 23:41						SE4
JOH021	1/30/2015 1:45	DEP	16R	JUS205	DC-93		NW4
WOH002	1/31/2015 23:05	UNK	UNKN	UNKN	UNKN		SE1