

MONTHLY OPERATIONS & NOISE SUMMARY

Paine Field Airport

December 2014

ONLINE AT: <http://www.paineairport.com>

NOISE COMMENT FORM: <http://www.paineairport.com/FormCenter/Noise-Event-Form-3/Noise-Event-Form-43>

NOISE SUMMARY REPORTS: <http://www.paineairport.com/176/Noise-Summary-Reports>

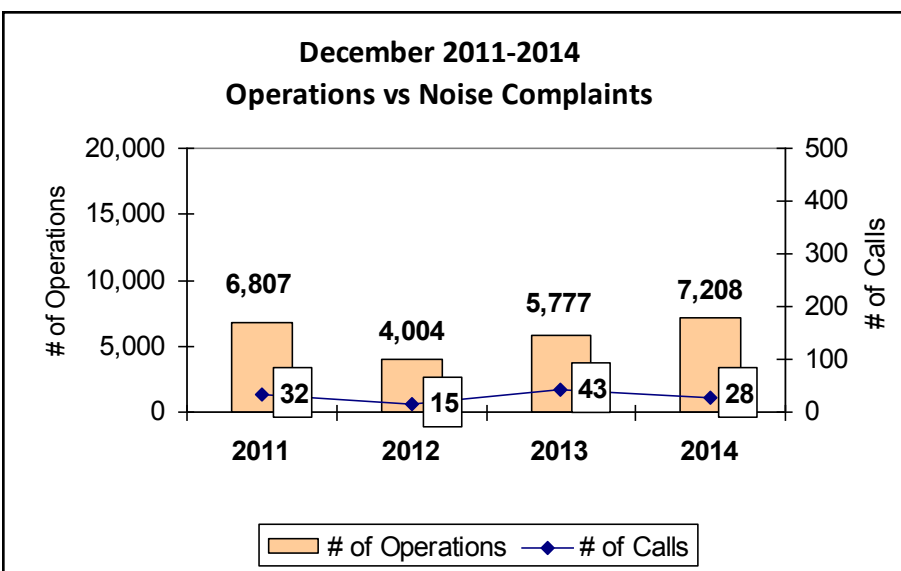
PAINE FIELD HAPPENINGS: <http://www.paineairport.com/177/Paine-Field-Happenings>

Noise Brief:

During December 2014, the airport office received 28 noise related calls and emails from individuals in the surrounding communities. 1 call was regarding engine runs.

During December 2014, the FAA Paine Field Air Traffic Control Tower recorded 7,208 flight operations. This is a 24.77% increase in operations from December 2013, which had 5,777 operations.

The four-year average number of flight operations for the month of December is 5,949. Total operations for December 2014 is 21.16% above the four-year average. 2 callers accounted for 39% of all noise complaints for the month.



Complaints:

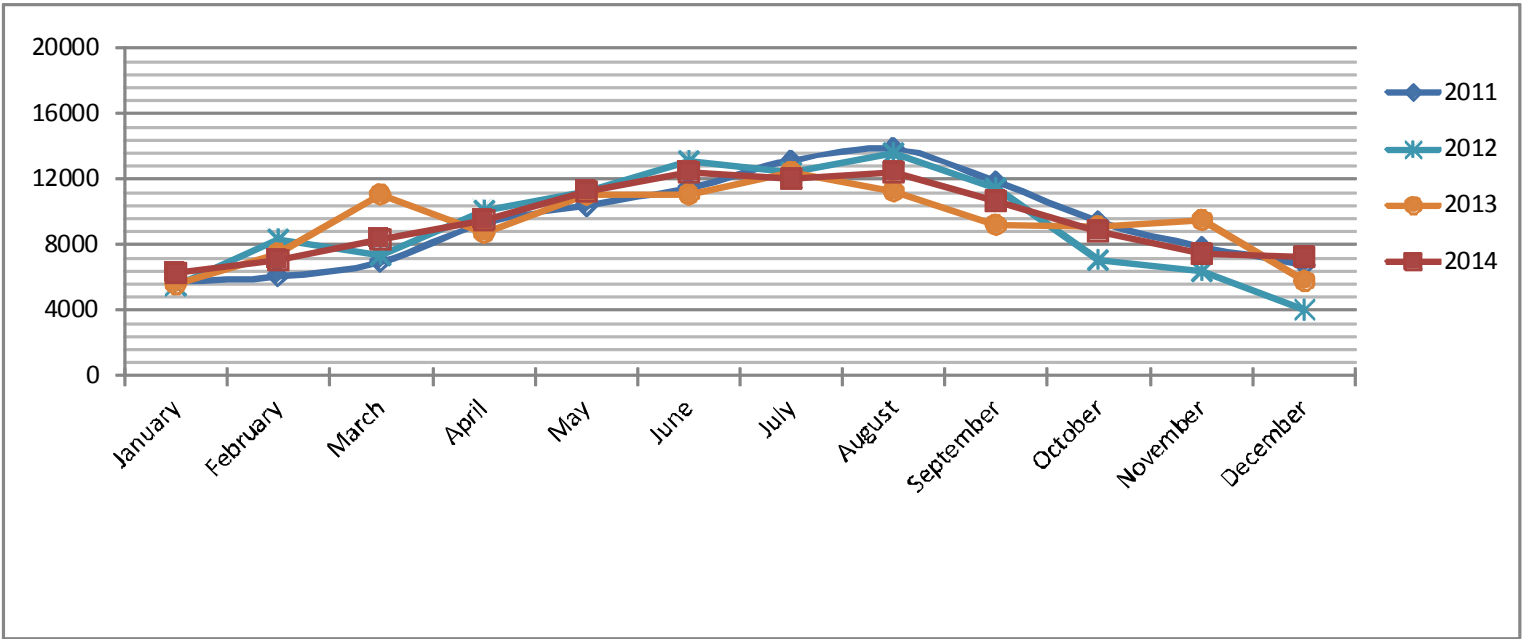
Many factors contribute to the amount of complaints received each month and by how many people. Complaint totals are rarely consistent due to factors ranging from one unusual flight event that generates multiple complaints from a large group of people, an overcast day which blocks in sound, or perhaps a new homeowner that didn't notice the flight paths before the purchase of the property.

PAINE FIELD AIRPORT • 3220 100TH ST. SW SUITE A • EVERETT, WA 98204

NOISE HOTLINE: 425-353-2110 x1

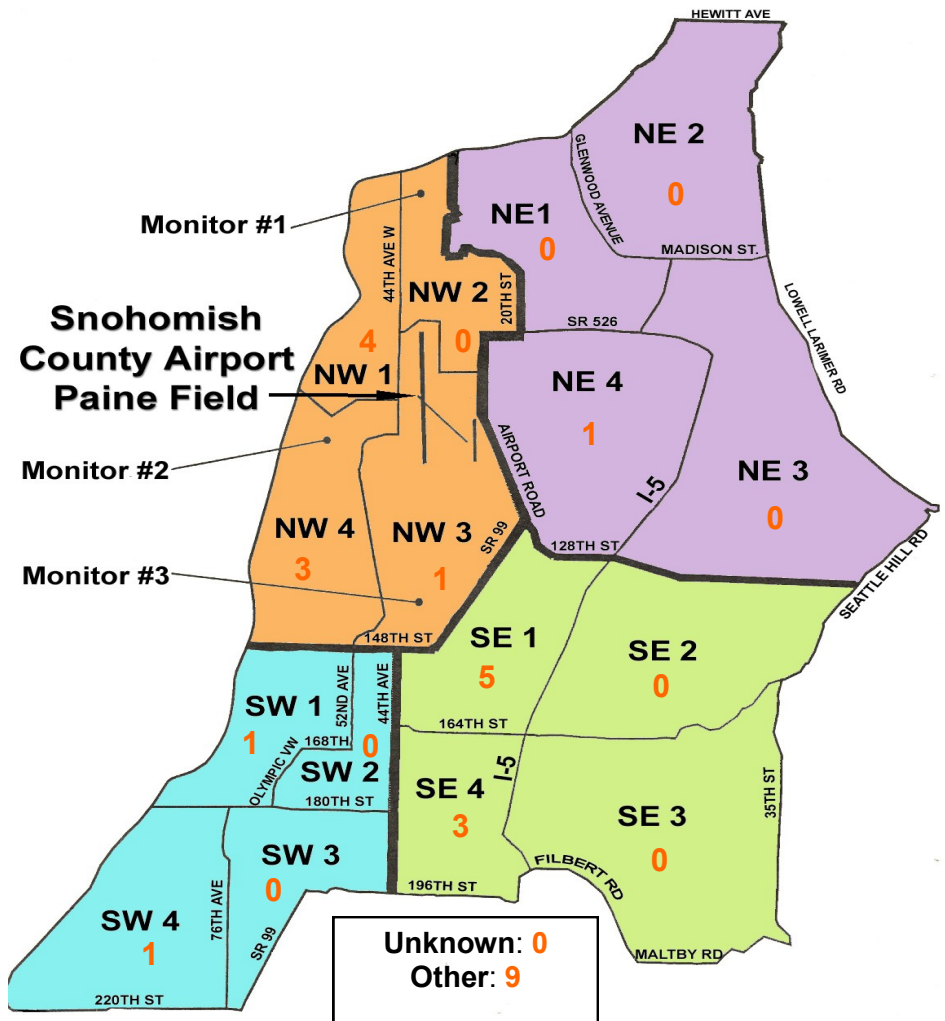
For further information, please call Airport Operations at 425-388-5125

Monthly Operations Levels 2011—2014



Paine Field Community Quadrants

The graphic to the right depicts Paine Field's 16 noise quadrants. The red numbers within each quadrant represent how many calls were made from that quadrant in the month of December. "Unknown" represents complaints where the caller's quadrant was not identified. "Other" represents complaints from outside the four major quadrants.



Caller Complaints

Noise complaints are received via telephone hotline or through the airport web page noise complaint form.

Upon receipt, complaints are investigated. Airport staff uses the AIRSCENE data and other sources to help identify which operation generated the noise complaint. The FAA retains radar data for three days before providing it to the airport's AIRSCENE noise monitoring system.

The aircraft operator is then notified of the complaint and made aware of the airport's noise abatement program. Callers who specifically request to be contacted are called back.

Since FAA operations data is not released until the third week of the following month, the monthly

summary report is posted online at paineairport.com the fourth week of the following month.

Caller Identification Codes are listed in the first column of the complaint table. You should be able to identify yourself by the first 3 letters of your last name and the date and time you called in. If you are having trouble identifying your new code, please call the airport office and we will look you up.

First time callers will receive a one-time hard copy mailing of this monthly noise summary. After the initial mailing, future reports will be posted online at the websites listed on the front of this report. The aircraft operations listed on this page (and next) are presumed to have originated or completed their flights at Paine Field.

Caller Code	Date/Time	Operation	Runway	Flight ID	Aircraft Type	Comments	Community
GRE015	12/2/2014 11:10	ARR	34L	PHENX 11,21	FA-18		OTH - S
SMU001	12/2/2014 11:13						NW4
DRO001	12/2/2014 11:16						OTH
ROB008	12/2/2014 13:40	DEP	34L	PHENX	FA-18		SW1
MAC002	12/2/2014 18:57	T/G	16R	P-354	P-3		NW1
MAC002	12/2/2014 19:09						NW1
JOH021	12/3/2014 20:00	DEP	16R	GTI4532	747-LCF	Ground noise take off too	NW4
WOH002	12/3/2014 23:55	ARR	34L	BOE454	777-W		SE1
WOH002	12/8/2014 1:10	DEP	16R	GTI4532	747-LCF		SE1
LEM001	12/8/2014 1:11						OTH
KLE002	12/8/2014 1:11						NW1
GRE015	12/8/2014 18:00	DEP	16R	GTI4512	747-LCF		OTH - S
HAL012	12/8/2014 21:30	DEP	16R	JBU497	A-320		NW4
PET009	12/9/2014 12:23	DEP	16R	CCA079	747-8	Loud	SW4
WOH002	12/13/2014 1:25	DEP	16R	GTI4516	747-LCF	Loud	SE1
STA012	12/14/2014 4:02	DEP	16R	GTI4516	747-LCF	Just too loud	NW3
FIS001	12/18/2014 12:00	DEP	16L	GTI4516	747-LCF	Loud	SE4
WAL018	12/19/2014 4:34	N/A	N/A	N/A	N/A	Want all air traffic diverted.	OTH - S
WOH002	12/19/2014 23:35	DEP	16R	AVA9988	787-8		SE1
GRE015	12/21/2014 12:30	DEP	16R	GTI4512	747-LCF	Low and loud	OTH - S
GRE015	12/21/2014 12:30	DEP	16R	GTI4512	747-LCF	Extremely low and loud many flights	OTH - S
WOH002	12/22/2014 0:05	UNK	UNK	UNKNOWN	UNKN		SE1
GOL007	12/22/2014 3:58	UNK	UNK	UNKNOWN	UNKN	Engine testing can't sleep	NE4
GRE015	12/22/2014 12:42	DEP	16R	GTI4512	747-LCF	Loud loud loud!	OTH - S
SMI002	12/26/2014 18:10	T/G	16R	N60226	C-150J		NW1
FIS001	12/27/2014 20:10	DEP	16R	GTI4512	747-LCF	Low and noise	SE4
GRE015	12/27/2014 20:10	DEP	16R	GTI4512	747-LCF		OTH - S
FIS001	12/30/2014 11:21	DEP	16R	CCA079	747-8		SE4