

MONTHLY OPERATIONS & NOISE SUMMARY

Paine Field Airport

November 2014

ONLINE AT: <http://www.paineairport.com>

NOISE COMMENT FORM: <http://www.paineairport.com/FormCenter/Noise-Event-Form-3/Noise-Event-Form-43>

NOISE SUMMARY REPORTS: <http://www.paineairport.com/176/Noise-Summary-Reports>

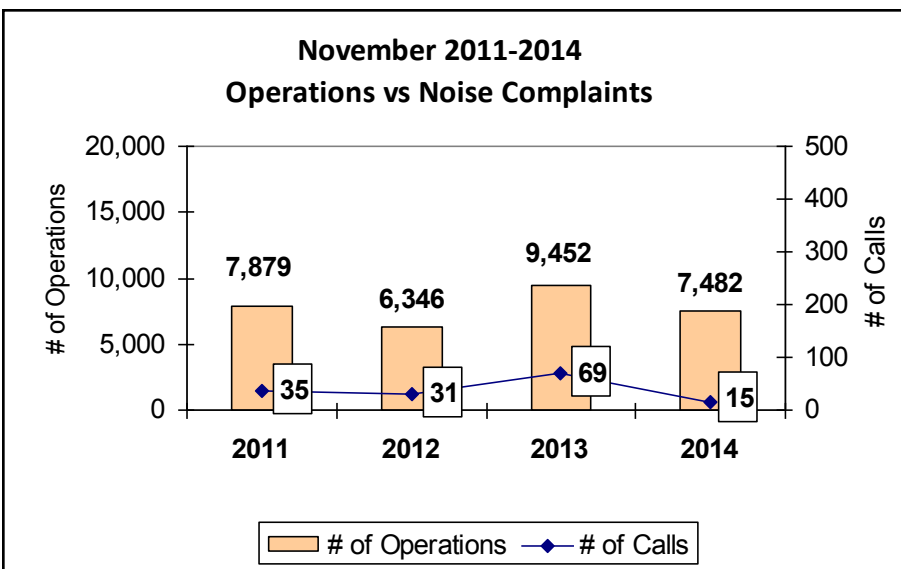
PAINE FIELD HAPPENINGS: <http://www.paineairport.com/177/Paine-Field-Happenings>

Noise Brief:

During November 2014, the airport office received 15 noise related calls and emails from individuals in the surrounding communities. 0 calls were regarding engine runs.

During November 2014, the FAA Paine Field Air Traffic Control Tower recorded 7,482 flight operations. This is a 21% decrease in operations from November 2013, which had 9,452 operations.

The four-year average number of flight operations for the month of November is 7,790. Total operations for November 2014 is 4% below the four-year average. Two callers accounted for 40% of all noise complaints for the month.



Complaints:

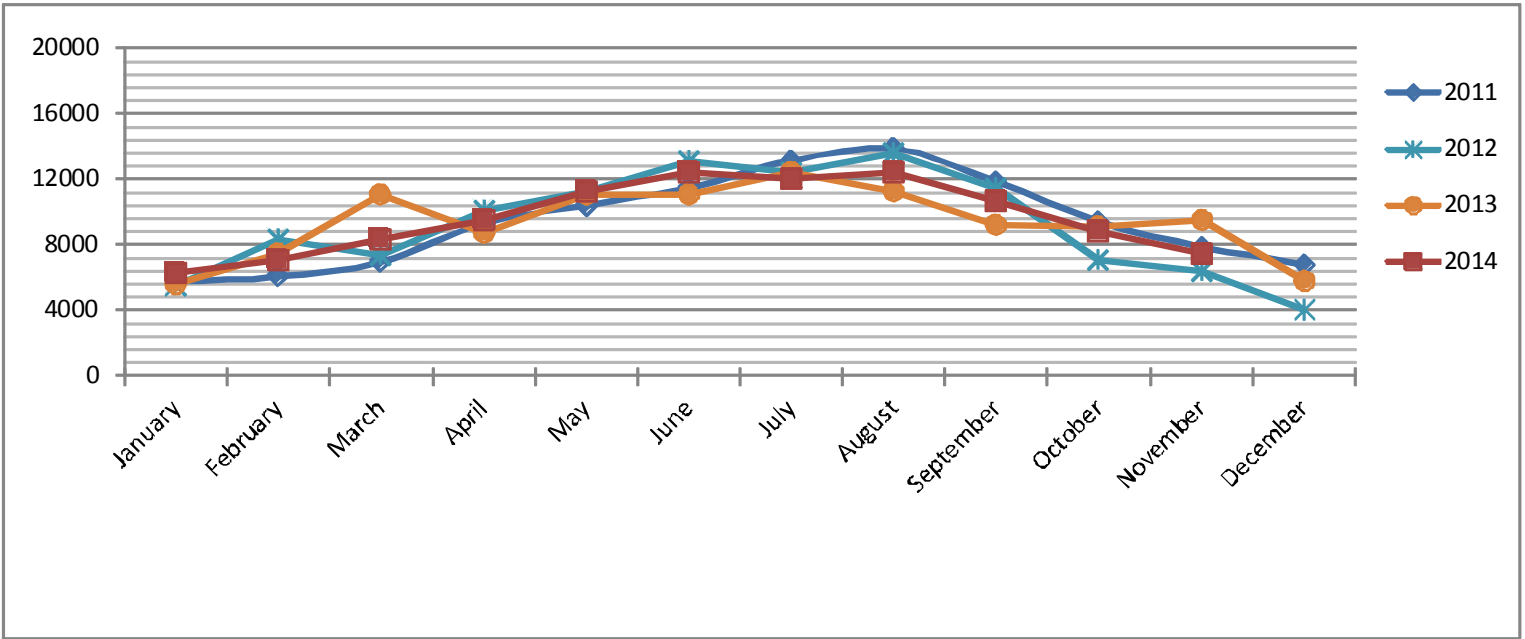
Many factors contribute to the amount of complaints received each month and by how many people. Complaint totals are rarely consistent due to factors ranging from one unusual flight event that generates multiple complaints from a large group of people, an overcast day which blocks in sound, or perhaps a new homeowner that didn't notice the flight paths before the purchase of the property.

PAINE FIELD AIRPORT • 3220 100TH ST. SW SUITE A • EVERETT, WA 98204

NOISE HOTLINE: 425-353-2110 x1

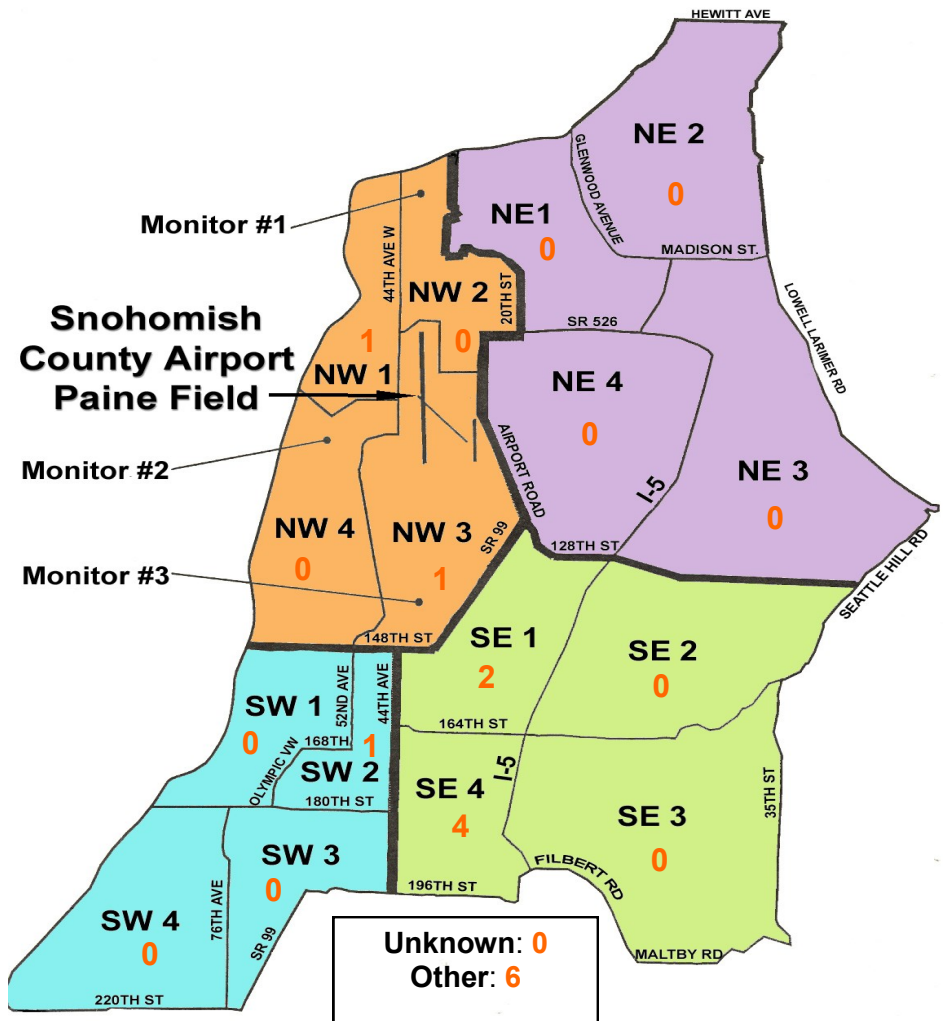
For further information, please call Airport Operations at 425-388-5125

Monthly Operations Levels 2011—2014



Paine Field Community Quadrants

The graphic to the right depicts Paine Field's 16 noise quadrants. The red numbers within each quadrant represent how many calls were made from that quadrant in the month of November. "Unknown" represents complaints where the caller's quadrant was not identified. "Other" represents complaints from outside the four major quadrants.



Caller Complaints

Noise complaints are received via telephone hotline or through the airport web page noise complaint form.

Upon receipt, complaints are investigated. Airport staff uses the AIRSCENE data and other sources to help identify which operation generated the noise complaint. The FAA retains radar data for three days before providing it to the airport's AIRSCENE noise monitoring system.

The aircraft operator is then notified of the complaint and made aware of the airport's noise abatement program. Callers who specifically request to be contacted are called back.

Since FAA operations data is not released until the third week of the following month, the monthly

summary report is posted online at paineairport.com the fourth week of the following month.

Caller Identification Codes are listed in the first column of the complaint table. You should be able to identify yourself by the first 3 letters of your last name and the date and time you called in. If you are having trouble identifying your new code, please call the airport office and we will look you up.

First time callers will receive a one-time hard copy mailing of this monthly noise summary. After the initial mailing, future reports will be posted online at the websites listed on the front of this report. The aircraft operations listed on this page (and next) are presumed to have originated or completed their flights at Paine Field.

Caller Code	Date/Time	Operation	Runway	Flight ID	Aircraft Type	Comments	Community
COO008	11/1/2014 1:00	N/A	N/A	N/A	N/A	General complaint low planes	OTH - S
FIS001	11/1/2014 17:29	DEP	16R	ETH9210	UNKN		SE4
GRE015	11/2/2014 11:26	DEP	16R	BOE067	747-8		OTH - S
FIS001	11/2/2014 12:38	DEP	16R	GTI4512	747-LCF		SE4
GRE015	11/2/2014 12:40						OTH - S
EDW004	11/5/2014 10:10	DEP	16R	BOE195	787-8	Loud	SW2
GRE015	11/7/2014 13:03	T/G	16R	BOE881	737-800		OTH - S
WOH002	11/10/2014 1:00	DEP	16R	GTI4512	747-LCF		SE1
WOH002	11/10/2014 5:00	DEP	16R	JBU6407	A-321		SE1
FIS001	11/13/2014 5:46	ARR	34L	GTI4356	747-LCF	Low	SE4
FIS001	11/16/2014 14:36	DEP	16R	BOE195	787-8	Low	SE4
GRE015	11/17/2014 9:46	DEP	16R	GTI4512	747-LCF	Low and loud Dreamlifter	OTH - S
ARN005	11/17/2014 12:45	DEP	16R	BOE296	787-8	Too low over Clinton	OTH -W
MOT002	11/17/2014 16:29	N/A	N/A	N/A	N/A	General complaint GA traffic	NW3
SHE009	11/25/2014 6:25	DEP	34L	GTI4512	747-LCF		NW1