

MONTHLY OPERATIONS & NOISE SUMMARY

Paine Field Airport

August 2014

ONLINE AT: <http://www.paineairport.com>

NOISE COMMENT FORM: <http://www.paineairport.com/FormCenter/Noise-Event-Form-3/Noise-Event-Form-43>

NOISE SUMMARY REPORTS: <http://www.paineairport.com/176/Noise-Summary-Reports>

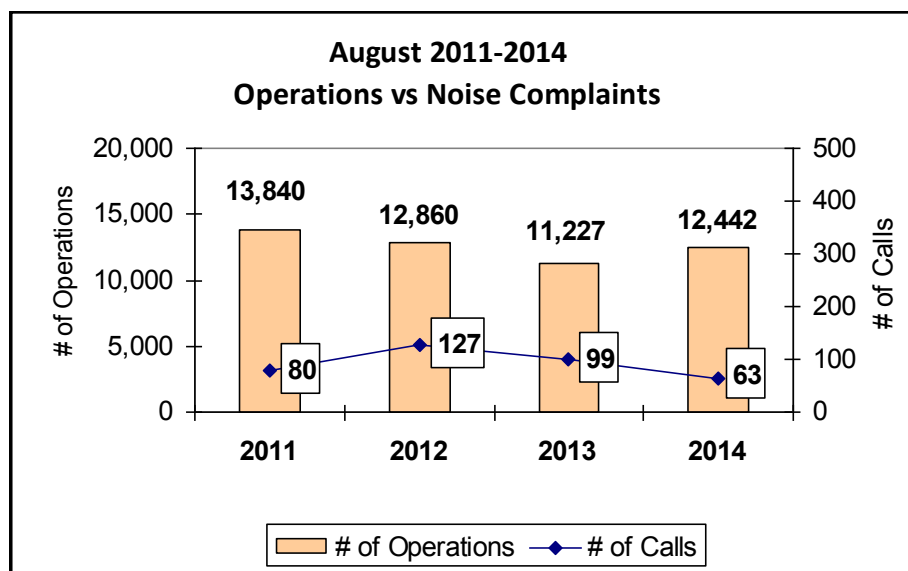
PAINE FIELD HAPPENINGS: <http://www.paineairport.com/177/Paine-Field-Happenings>

Noise Brief:

During August 2014, the airport office received 63 noise related calls and emails from individuals in the surrounding communities. No calls were regarding engine runs.

During August 2014, the FAA Paine Field Air Traffic Control Tower recorded 12,442 flight operations. This is a 10.8% increase in operations from August 2013, which had 11,227 operations.

The four-year average number of flight operations for the month of August is 12,592. Total operations for August 2014 is 1.1% below the four-year average. Two callers accounted for 31% of all noise complaints for the month.



Complaints:

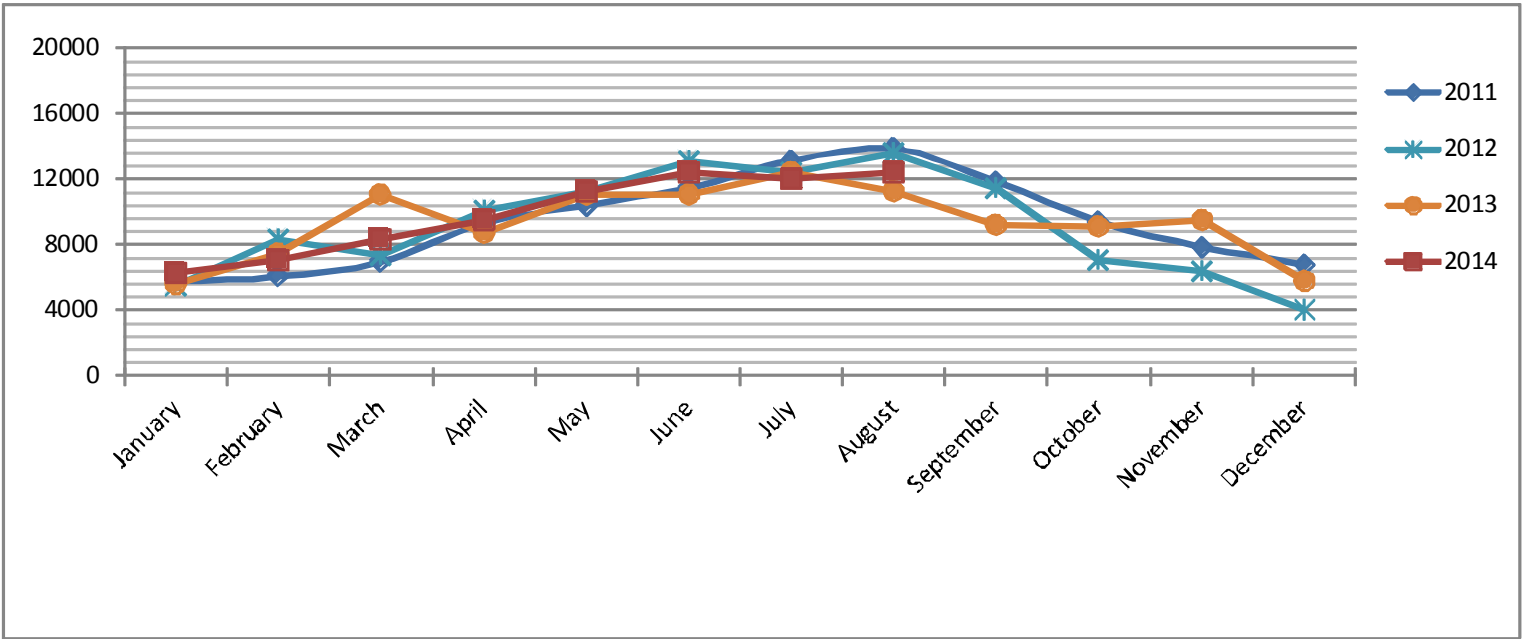
Many factors contribute to the amount of complaints received each month and by how many people. Complaint totals are rarely consistent due to factors ranging from one unusual flight event that generates multiple complaints from a large group of people, an overcast day which blocks in sound, or perhaps a new homeowner that didn't notice the flight paths before the purchase of the property.

PAINE FIELD AIRPORT • 3220 100TH ST. SW SUITE A • EVERETT, WA 98204

NOISE HOTLINE: 425-353-2110 x1

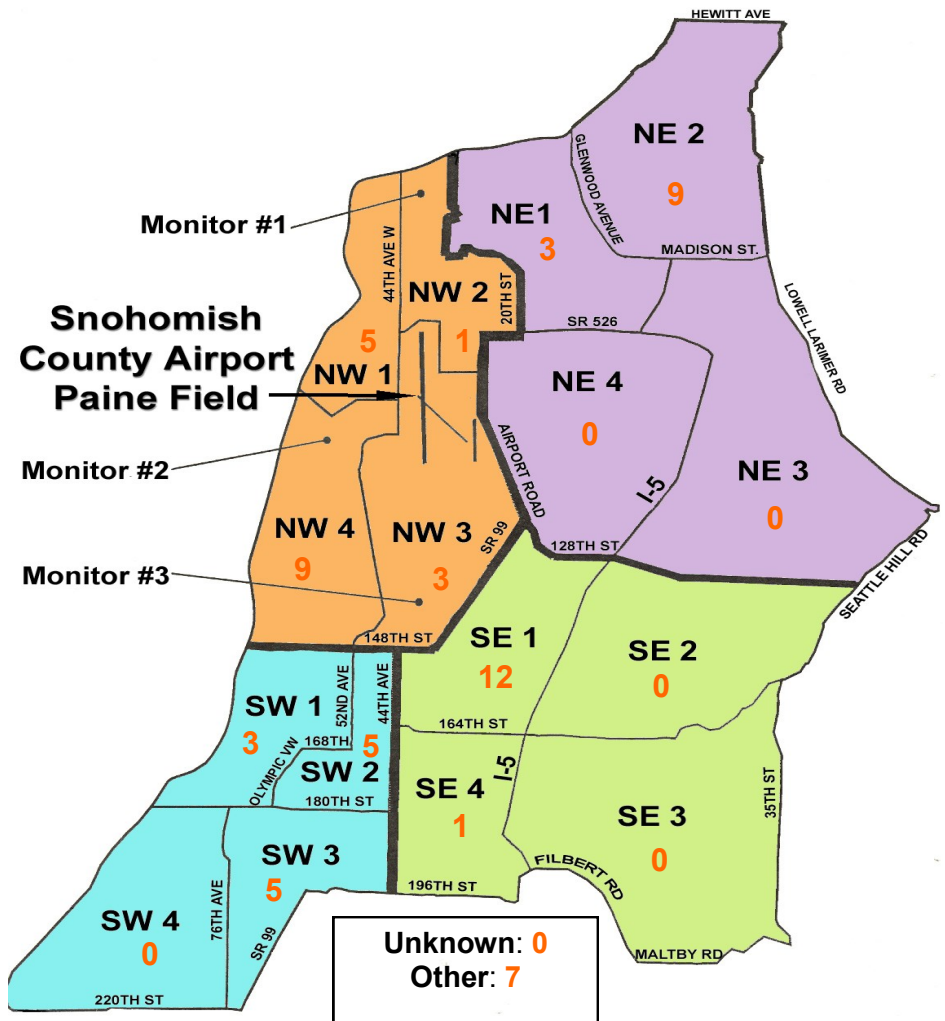
For further information, please call Airport Operations at 425-388-5125

Monthly Operations Levels 2011—2014



Paine Field Community Quadrants

The graphic to the right depicts Paine Field’s 16 noise quadrants. The red numbers within each quadrant represent how many calls were made from that quadrant in the month of August. “Unknown” represents complaints where the caller’s quadrant was not identified. “Other” represents complaints from outside the four major quadrants.



Caller Complaints

Noise complaints are received via telephone hotline or through the airport web page noise complaint form.

Upon receipt, complaints are investigated. Airport staff uses the AIRSCENE data and other sources to help identify which operation generated the noise complaint. The FAA retains radar data for three days before providing it to the airport's AIRSCENE noise monitoring system.

The aircraft operator is then notified of the complaint and made aware of the airport's noise abatement program. Callers who specifically request to be contacted are called back.

Since FAA operations data is not released until the third week of the following month, the monthly

summary report is posted online at paineairport.com the fourth week of the following month.

Caller Identification Codes are listed in the first column of the complaint table. You should be able to identify yourself by the first 3 letters of your last name and the date and time you called in. If you are having trouble identifying your new code, please call the airport office and we will look you up.

First time callers will receive a one-time hard copy mailing of this monthly noise summary. After the initial mailing, future reports will be posted online at the websites listed on the front of this report. The aircraft operations listed on this page (and next) are presumed to have originated or completed their flights at Paine Field.

Caller Code	Date/Time	Operation	Runway	Flight ID	Aircraft Type	Comments	Community
WOH002	8/1/2014 0:55	DEP	34L	SWA8507	737-700		SE1
WOH002	8/1/2014 2:15	DEP	16R	GTI4542	747-LCF		SE1
RAP001							NW3
EDW004	8/1/2014 20:23	DEP	34L	GTI4516	747-LCF		SW2
WOL003	8/1/2014 22:35	DEP	34L	GTI4512	747-LCF		NE2
WOL003	8/1/2014 23:45	UNK	UNK	UNKNOWN	UNKN		NE2
REY002	8/3/2014 13:12	N/A	N/A	N/A	N/A	General complaint	NW4
ALF001	8/3/2014 15:12	DEP	34L	BOE474	787-8		SW1
GUS002	8/3/2014 17:30	ARR	34L	N5490B	C-152		SW3
EDW004	8/3/2014 17:36						SW2
GUS002	8/4/2014 18:43	ARR	34L	BOE167	787-9		SW3
WOL003	8/4/2014 22:30	UNK	UNK	UNKNOWN	UNKN		NE2
WOL003	8/4/2014 22:35	UNK	UNK	UNKNOWN	UNKN		NE2
WOL003	8/5/2014 1:35	UNK	UNK	UNKNOWN	UNKN		NE2
ADA006	8/5/2014 18:40	ARR	34R	BOE457	747-8		OTH
STE024	8/6/2014 1:24	DEP	34L	GTI4512	747-LCF		NE1
CUR002	8/6/2014 1:27						NE1
SMU001	8/7/2014 8:27	DEP	16R	GTI4532	747-LCF		NW4
MON009	8/7/2014 15:25	DEP	16R	GTI4516	747-LCF		SW3
JOH021	8/9/2014 1:15	ARR	16R	GTI4351	747-LCF		NW4
STU006	8/11/2014 23:22	DEP	16R	JBU6488	A320		OTH
WOH002	8/11/2014 23:35	ARR	16R	GTI4532	747-LCF		SE1
TOM003	8/12/2014 20:10	DEP	16R	GTI4542	747-LCF		NW3

Caller Code	Date/Time	Operation	Runway	Flight ID	Aircraft Type	Comments	Community
WOH002	8/13/2014 1:35	DEP	16R	GTI4512	747-LCF		SE1
STU006	8/13/2014 1:38						OTH
WOH002	8/13/2014 5:55	DEP	16R	GTI4532	747-LCF		SE1
WOH002	8/13/2014 23:15	DEP	16R	CHN35	CJ3		SE1
TUB002	8/13/2014 23:35	ARR	16R	GTI4351	747-LCF		NE1
WOL003	8/13/2014 23:36						NE2
WOL003	8/14/2014 23:00	DEP	34L	7878	787-8		NE2
TUS001	8/15/2014 0:56	DEP	16R	GTI4532	747-LCF		SE1
LAR011	8/16/2014 0:54						NW4
WOH002	8/16/2014 0:55	DEP	16R	GTI4532	747-LCF	Loud	SE1
GUS002	8/16/2014 0:55						SW3
SMU001	8/16/2014 0:55						NW4
WAL011	8/17/2014 5:30						NW1
FIT002	8/17/2014 5:30	DEP	16R	GTI4532	747-LCF		NW4
WAG003	8/17/2014 5:30						NW4
WOH002	8/17/2014 5:45						SE1
STA012	8/17/2014 5:47						NW3
WOL003	8/17/2014 23:32	ARR	16R	GTI4451	747-LCF		NE2
WOH002	8/18/2014 2:50	ARR	34L	JBU6492	A320		SE1
MON009	8/18/2014 18:25	DEP	34L	BOE220	787-8		SW3
GRU002	8/19/2014 13:38	DEP	16L	BOE642	747-8		OTH
HAR022	8/19/2014 18:50	DEP	29	BOE146	777-300		SW1
GRE015	8/20/2014 12:54	DEP	16R	GTI4512	747-LCF	Loud	OTH - S
WOL003	8/22/2014 0:48	DEP	34L	CSN773	777-W		NE2
LEE004	8/22/2014 1:00						NW1
STE001	8/22/2014 11:06	DEP	34L	BOE474	787-8	Loud	SW2
LEE004	8/24/2014 0:10	DEP	34L	GTI4536	747-LCF		NW1
GIO001	8/24/2014 0:15						NW1
ROS003	8/24/2014 4:00	ARR	16R	GTI4352	747-LCF		NW2
AGU001	8/24/2014 13:16	ARR	34L	ARCHR2711	FA-18		SE4
EDW004	8/24/2014 18:45	ARR	34L	BOE560	767-300		SW2
PRI003	8/24/2014 18:50	ARR	34L	BOE560	767-300	spewing benzene in neighborhood	SW1
EDW004	8/24/2014 18:50	ARR	34L	BOE560	767-300		SW2
LEE004	8/27/2014 3:10	DEP	34L	GTI4351	747-LCF		NW1
GRE015	8/28/2014 15:35	DEP	16R	N89DW	Learjet	Loud	OTH - S
WOH002	8/29/2014 23:10	DEP	16R	AIR1099	Heavy		SE1
WOH002	8/29/2014 23:25	DEP	16R	SWA8505	737-400		SE1
FED001	8/30/2014 10:30	DEP	UNK	UNKNOWN	UNKN		NW4
ALE002	8/30/2014 19:30	DEP	34L	N5AD	Skyraider		OTH - S
MEE002	8/31/2014 15:30	ARR	16R	N6178F	F7F		NW4