

MONTHLY OPERATIONS & NOISE SUMMARY

Paine Field Airport

June 2014

ONLINE AT: <http://www.paineairport.com>

NOISE COMMENT FORM: <http://www.paineairport.com/FormCenter/Noise-Event-Form-3/Noise-Event-Form-43>

NOISE SUMMARY REPORTS: <http://www.paineairport.com/176/Noise-Summary-Reports>

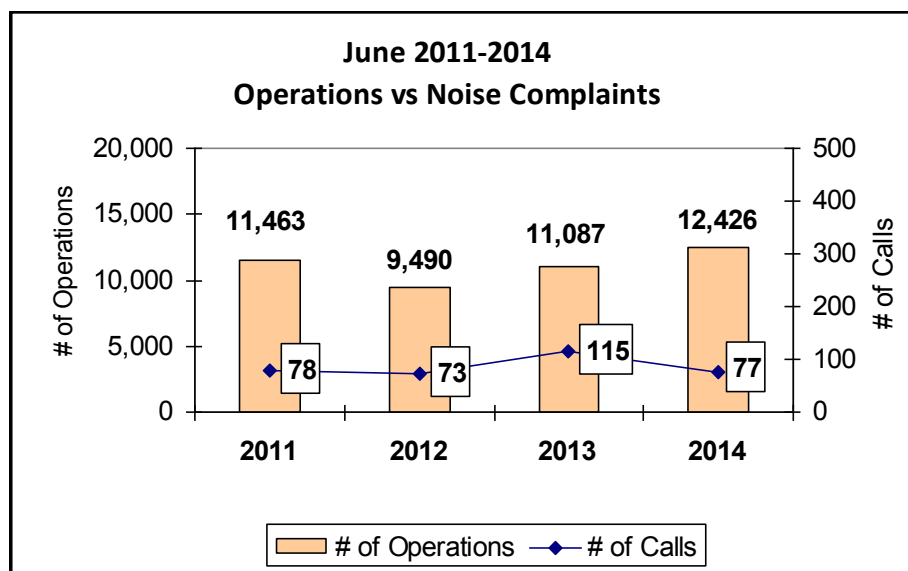
PAINE FIELD HAPPENINGS: <http://www.paineairport.com/177/Paine-Field-Happenings>

Noise Brief:

During June 2014, the airport office received 77 noise related calls and emails from individuals in the surrounding communities. No calls were regarding engine runs.

During June 2014, the FAA Paine Field Air Traffic Control Tower recorded 12,426 flight operations. This is a 12% increase in operations from June 2013, which had 11,087 operations.

The four-year average number of flight operations for the month of June is 11,117. Total operations for June 2014 is 11.7% above the four-year average. 2 callers accounted for 35% of all noise complaints for the month.



Complaints:

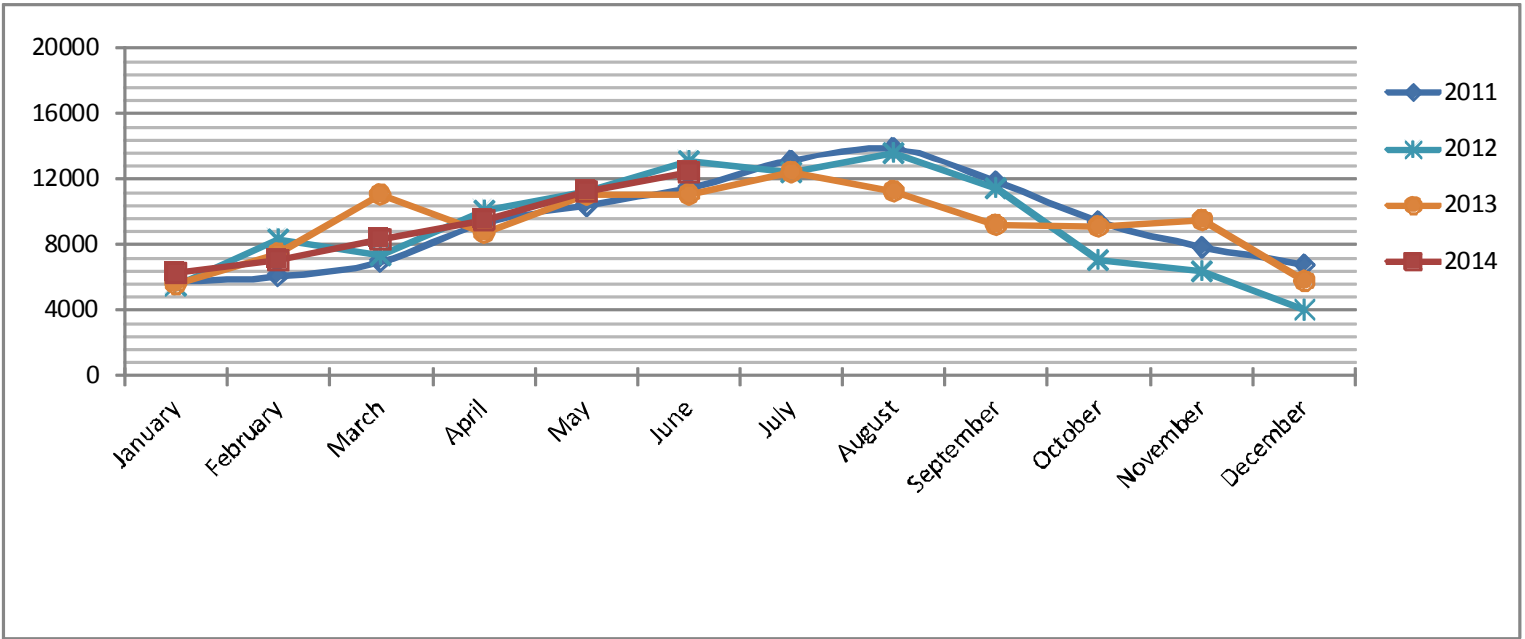
Many factors contribute to the amount of complaints received each month and by how many people. Complaint totals are rarely consistent due to factors ranging from one unusual flight event that generates multiple complaints from a large group of people, an overcast day which blocks in sound, or perhaps a new homeowner that didn't notice the flight paths before the purchase of the property.

PAINE FIELD AIRPORT • 3220 100TH ST. SW SUITE A • EVERETT, WA 98204

NOISE HOTLINE: 425-353-2110 x1

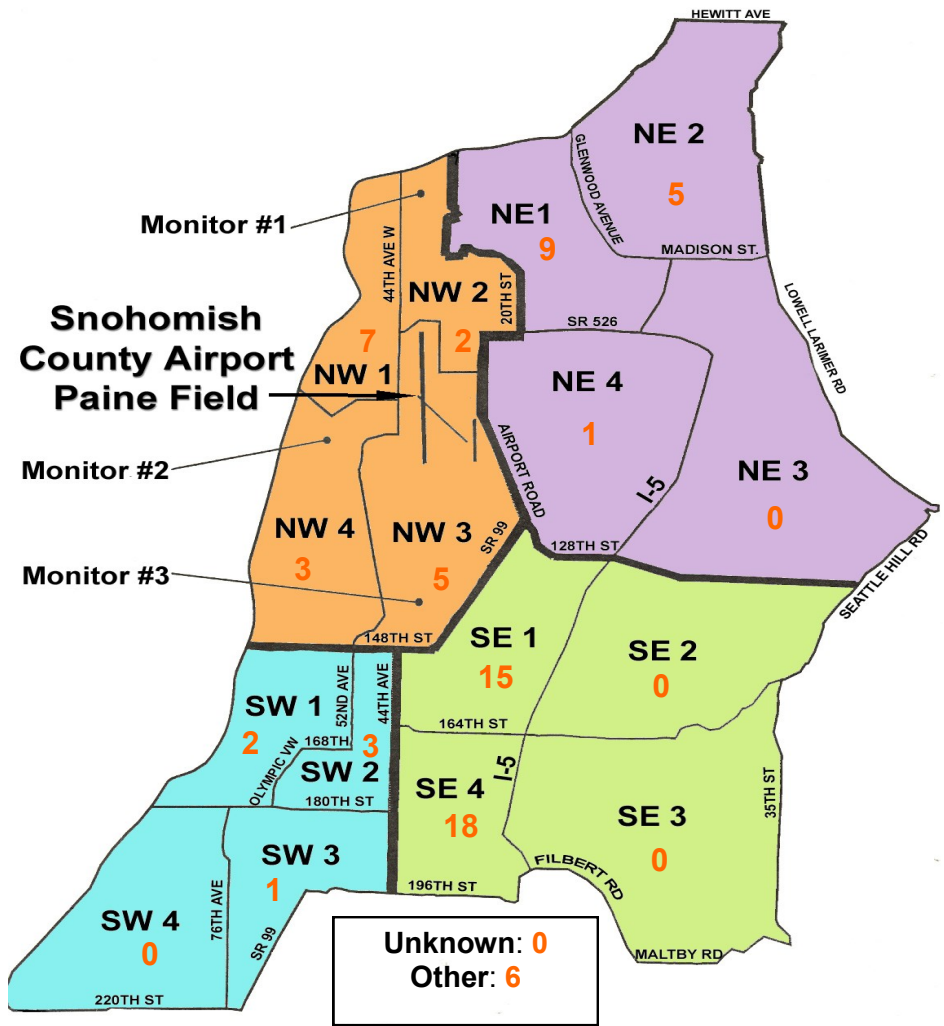
For further information, please call Airport Operations at 425-388-5125

Monthly Operations Levels 2011—2014



Paine Field Community Quadrants

The graphic to the right depicts Paine Field's 16 noise quadrants. The red numbers within each quadrant represent how many calls were made from that quadrant in the month of June. "Unknown" represents complaints where the caller's quadrant was not identified. "Other" represents complaints from outside the four major quadrants.



Caller Complaints

Noise complaints are received via telephone hotline or through the airport web page noise complaint form.

Upon receipt, complaints are investigated. Airport staff uses the AIRSCENE data and other sources to help identify which operation generated the noise complaint. The FAA retains radar data for three days before providing it to the airport's AIRSCENE noise monitoring system.

The aircraft operator is then notified of the complaint and made aware of the airport's noise abatement program. Callers who specifically request to be contacted are called back.

Since FAA operations data is not released until the third week of the following month, the monthly

summary report is posted online at paineairport.com the fourth week of the following month.

Caller Identification Codes are listed in the first column of the complaint table. You should be able to identify yourself by the first 3 letters of your last name and the date and time you called in. If you are having trouble identifying your new code, please call the airport office and we will look you up.

First time callers will receive a one-time hard copy mailing of this monthly noise summary. After the initial mailing, future reports will be posted online at the websites listed on the front of this report. The aircraft operations listed on this page (and next) are presumed to have originated or completed their flights at Paine Field.

Caller Code	Date/Time	Operation	Runway	Flight ID	Aircraft Type	Comments	Community
LAB003	6/1/2014 23:55	DEP	34L	GTI4512	747-LCF		NW1
BRE005							NW1
MAR019	6/2/2014 12:02	N/A	N/A	N/A	N/A	General complaint	OTH - N
MCG004	6/3/2014 0:10	ARR	16R	HAL9992	A-330		NW2
MCG004	6/3/2014 2:15	ARR	16R	GTI4151	747-LCF		NW2
WOH002	6/3/2014 4:20	DEP	16R	N362FW	LJ-35		SE1
FIS001	6/3/2014 14:30	DEP	16R	GTI4512	747-LCF	Low	SE4
FIS001	6/4/2014 11:10	DEP	16R	GTI4512	747-LCF	Low	SE4
GRU002	6/4/2014 19:10	ARR	16R	BOE182	737-800	Low	OTH
WOH002	6/4/2014 0:55	DEP	16R	SWA8500	737-300		SE1
TOM003	6/5/2014 16:25	DEP	34L	BOE437	777-W		NW3
FIS001	6/6/2014 0:08	ARR	34L	SWA8502	737-700	Low	SE4
FIS001	6/6/2014 8:22	UNK	UNK	UNKNOWN	UNKNOWN	Low	SE4
LYO001	6/6/2014 11:07	DEP	34L	BOE214	777-ER	Loud	NE4
WOH002	6/6/2014 22:40	DEP	34L	JBU6412	A-321		SE1
TUB002	6/6/2014 23:45	DEP	34L	AN26391	777-W		NE1
LOC004	6/7/2014 0:05	ARR	34L	GTI4151	747-LCF	Low	SE4
FIS001							SE4
LOC004							SE4
WOH002							SE1
HOW009	6/7/2014 0:15	DEP	34L	SWA8500	737-700		OTH - S
HUG004	6/7/2014 0:30	N/A	N/A	N/A	N/A	General complaint	NE1
WOH002	6/7/2014 6:15	DEP	16R	GTI4532	747-LCF		SE1
WOH002	6/7/2014 12:05	ARR	34L	GTI4151	747-LCF		SE1
HUG004	6/7/2014 23:00	ARR	16R	GTI4451	747-LCF		NE1
WOH002	6/7/2014 23:20	ARR	16R	GTI4451	747-LCF		SE1
YOU001	6/8/2014 0:40	DEP	34L	KIOWA93	Heli		NW4
HUG004	6/8/2014 2:00	DEP	34L	NGOWL	LJ-35		NE1

Caller Code	Date/Time	Operation	Runway	Flight ID	Aircraft Type	Comments	Community
TUB002	6/8/2014 3:48	DEP	34L	GTI4532	747-LCF		NE1
BRE005	6/8/2014 3:50						NW1
TOM003	6/8/2014 11:21	ARR	34L	GTI4512	747-LCF		NW3
TOM003	6/8/2014 18:44	ARR	34L	GTI4351	747-LCF		NW3
FIS001	6/9/2014 12:41	ARR	16R	BOE527	747-8	Low	SE4
FIS001	6/9/2014 18:54	ARR	34L	BOE541	747-8	Low	SE4
WOH002	6/10/2014 1:45	ARR	34L	JBU6461	A-321		SE1
WOH002	6/11/2014 1:45	DEP	34L	HAL9991	A-330		SE1
FIS001	6/13/2014 18:50	DEP	16R	GTI4536	747-LCF	Low	SE4
HEW001	6/14/2014 0:52	DEP	34L	GTI4532	747-LCF		NE2
FIS001	6/14/2014 9:40	DEP	16R	BOE035	747-8	Low	SE4
FLE002	6/16/2014 5:00	DEP	34L	GTI4532	747-LCF	Low	NE2
EST002							NE1
TUB002							NE1
HEW001							NE2
FIS001	6/16/2014 5:53	UNK	UNK	UNKNOWN	UNKNOWN	Low	SE4
FIS001	6/16/2014 17:03	ARR	34L	GTI4151	747-LCF	Low	SE4
MON006	6/16/2014 21:06	DEP	16R	GTI4542	747-LCF		SE1
HEW001	6/18/2014 1:10	DEP	34L	GTI4542	747-LCF	Low	NE2
MAC002							NW1
BRE005							NW1
EST002							NE1
FIS001	6/18/2014 8:50	DEP	16R	BOE033	767-300	Low	SE4
MON006	6/18/2014 19:00	ARR	16R	N88BF	Sabreliner		SE1
WOH002	6/19/2014 1:25	ARR	34L	SWA8512	737-300		SE1
EST002	6/19/2014 1:56	DEP	34L	HAL9991	A-330		NE1
GRE015	6/19/2014 11:15	DEP	16R	GTI4516	747-LCF	Low	OTH - S
HOW009	6/19/2014 12:00	ARR	16R	NX529B	B-29		OTH - S
WOH002	6/20/2014 5:30	ARR	34L	GTI4351	747-LCF		SE1
TOM003							NW3
BAD003							SE4
EDW004	6/20/2014 9:14	DEP	16R	N755PA	GALX		SW2
FIS001	6/21/2014 3:43	DEP	34L	GTI4512	747-LCF		SE4
WOH002							SE1
AMI001	6/24/2014 17:30	ARR	16R	UNKNOWN	P-3	Low	NW1
SMI002							NW1
EDW004							SW2
MIC002	6/25/2014 17:23	ARR	34L	GTI4151	747-LCF	Loud	OTH - S
EDW004	6/26/2014 11:41	DEP	16R	N6218V	BE-35		SW2
GUS002	6/26/2014 14:15	DEP	16R	BOE397	777-300		SW3
HAU005	6/27/2014 19:35	DEP	34L	N470M	Hawker		SW1
HAR021	6/28/2014 9:30	DEP	16R	N711LT	C-650		SW1
MAR020	6/28/2014 9:35	T/G	16R	N/A	Vintage	General complaint	NW4
WOH002	6/29/2014 3:40	DEP	16R	GTI4542	747-LCF	Low	SE1
RAP001							NW3
LAR011							NW4
BAD003							SE4
FIS001							SE4
STE024	6/30/2014 1:43	DEP	34L	ADB138F	A-124		NE1