

MONTHLY OPERATIONS & NOISE SUMMARY

Paine Field Airport

May 2014

ONLINE AT: <http://www.paineairport.com>

NOISE COMMENT FORM: <http://www.paineairport.com/FormCenter/Noise-Event-Form-3/Noise-Event-Form-43>

NOISE SUMMARY REPORTS: <http://www.paineairport.com/176/Noise-Summary-Reports>

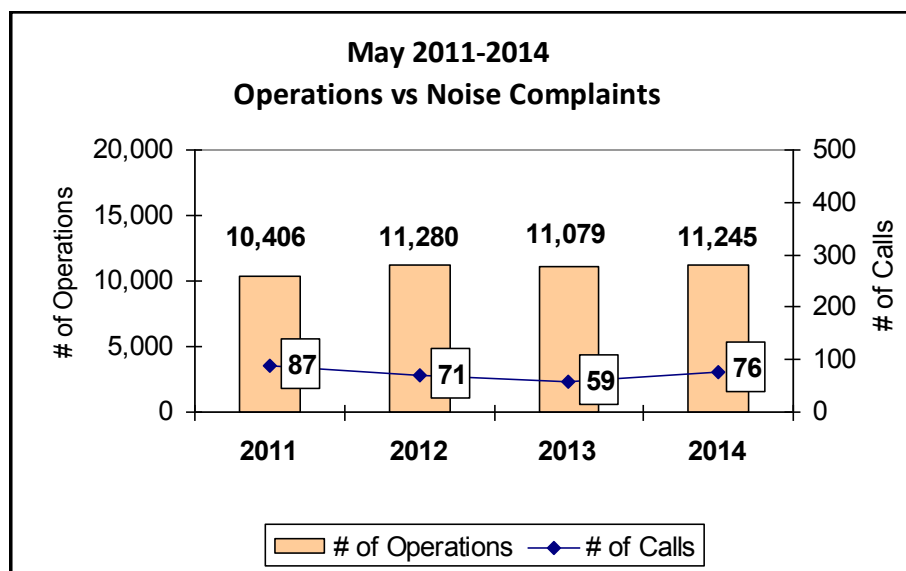
PAINE FIELD HAPPENINGS: <http://www.paineairport.com/177/Paine-Field-Happenings>

Noise Brief:

During May 2014, the airport office received 76 noise related calls and emails from individuals in the surrounding communities. No calls were regarding engine runs.

During May 2014, the FAA Paine Field Air Traffic Control Tower recorded 11,245 flight operations. This is a 1.5% increase in operations from May 2013, which had 11,079 operations.

The four-year average number of flight operations for the month of May is 11,003. Total operations for May 2014 is 2.2% above the four-year average. Two callers accounted for 57% of all noise complaints for the month.



Complaints:

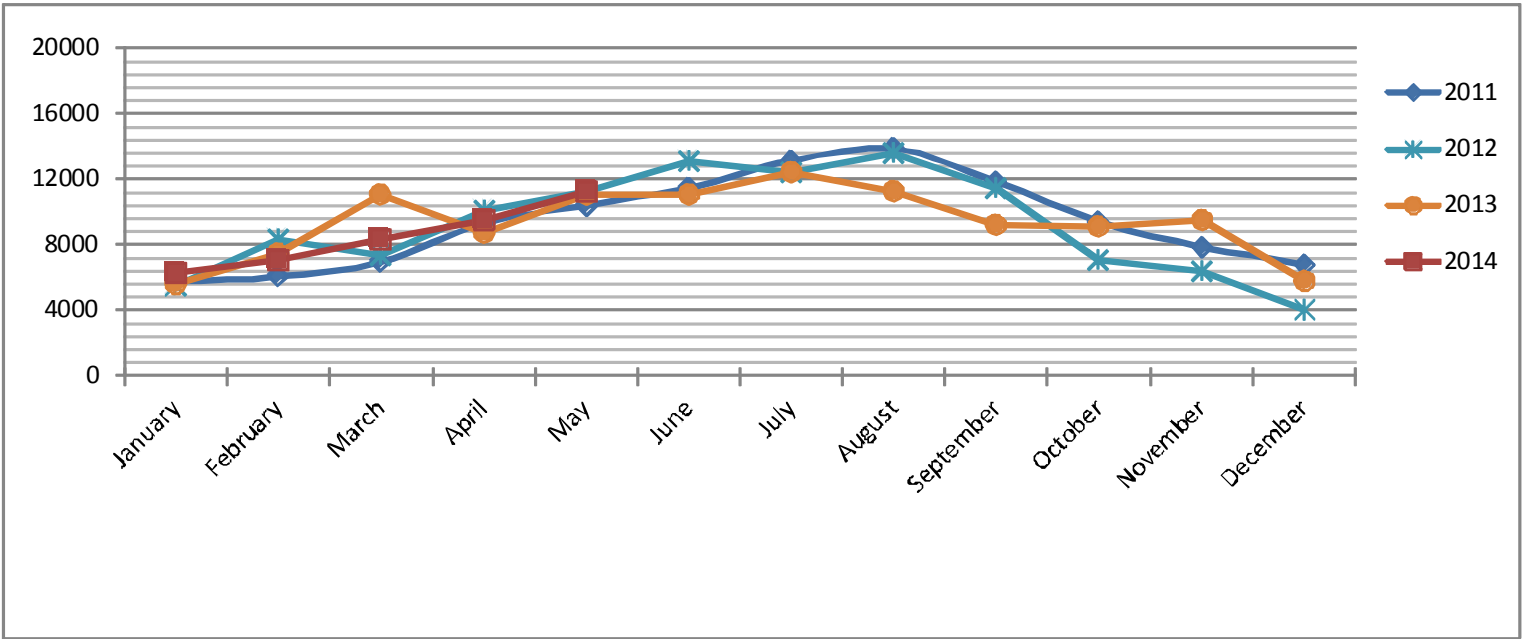
Many factors contribute to the amount of complaints received each month and by how many people. Complaint totals are rarely consistent due to factors ranging from one unusual flight event that generates multiple complaints from a large group of people, an overcast day which blocks in sound, or perhaps a new homeowner that didn't notice the flight paths before the purchase of the property.

PAINE FIELD AIRPORT • 3220 100TH ST. SW SUITE A • EVERETT, WA 98204

NOISE HOTLINE: 425-353-2110 x1

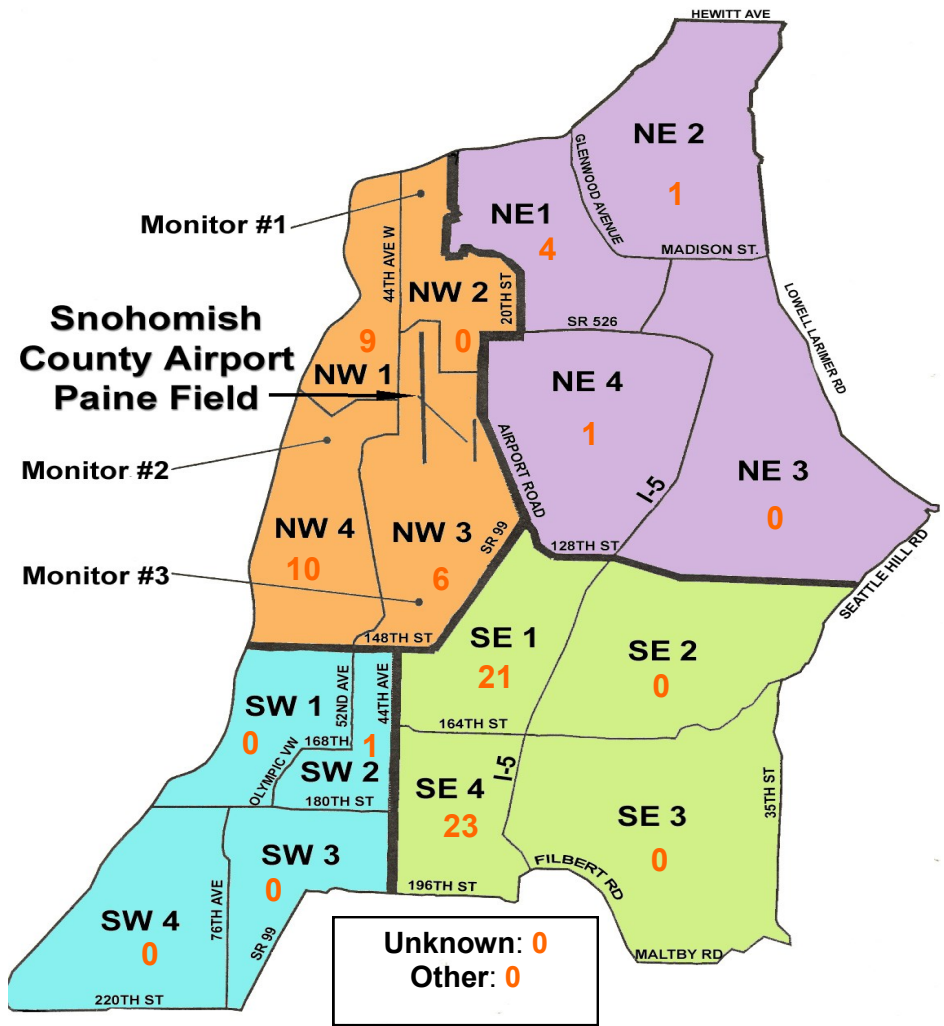
For further information, please call Airport Operations at 425-388-5125

Monthly Operations Levels 2011—2014



Paine Field Community Quadrants

The graphic to the right depicts Paine Field's 16 noise quadrants. The red numbers within each quadrant represent how many calls were made from that quadrant in the month of May. "Unknown" represents complaints where the caller's quadrant was not identified. "Other" represents complaints from outside the four major quadrants.



Caller Complaints

Noise complaints are received via telephone hotline or through the airport web page noise complaint form.

Upon receipt, complaints are investigated. Airport staff uses the AIRSCENE data and other sources to help identify which operation generated the noise complaint. The FAA retains radar data for three days before providing it to the airport's AIRSCENE noise monitoring system.

The aircraft operator is then notified of the complaint and made aware of the airport's noise abatement program. Callers who specifically request to be contacted are called back.

Since FAA operations data is not released until the third week of the following month, the monthly

summary report is posted online at paineairport.com the fourth week of the following month.

Caller Identification Codes are listed in the first column of the complaint table. You should be able to identify yourself by the first 3 letters of your last name and the date and time you called in. If you are having trouble identifying your new code, please call the airport office and we will look you up.

First time callers will receive a one-time hard copy mailing of this monthly noise summary. After the initial mailing, future reports will be posted online at the websites listed on the front of this report. The aircraft operations listed on this page (and next) are presumed to have originated or completed their flights at Paine Field.

Caller Code	Date/Time	Operation	Runway	Flight ID	Aircraft Type	Comments	Community
WOH002	5/1/2014 00:55	UNK	UNK	UNKNOWN	UNKN		SE1
KUL001	5/1/2014 22:28	DEP	34L	GTI4517	747-LCF		NE1
WIL026							NW1
WOH002	5/3/2014 1:30	ARR	16R	GTI4156	747-LCF		SE1
RAP001	5/3/2014 5:40	DEP	16R	GTI4532	747-LCF		NW3
TOM003							NW3
WOH002							SE1
FIS001	5/3/2014 19:37	DEP	16R	GTI4542	747-LCF		SE4
WOH002	5/5/2014 5:20	DEP	16R	GTI4532	747-LCF		SE1
FIS001	5/5/2014 8:07	DEP	16R	KFS726	727-200	Low	SE4
FIS001	5/6/2014 10:17	DEP	16R	ETH9201	787-8	Low	SE4
FIS001	5/6/2014 10:22	DEP	16R	GTI4512	747-LCF	Extremely low	SE4
FIS001	5/6/2014 19:51	DEP	16R	GTI4542	747-LCF	Low	SE4
FIS001	5/7/2014 9:14	DEP	UNK	BOE178	777-300	Low	SE4
YOU001	5/7/2014 13:00	DEP	16R	AAL9609	737-800	Low	NW4
REY002	5/7/2014 19:07	ARR	34L	N318DN	Citation	Low	NW4
WOH002	5/8/2014 2:30	DEP	16R	HAL9993	A330-200		SE1
YOU001	5/8/2014 12:00	DEP	16R	GTI4533	747-LCF		NW4
TOM003	5/9/2014 3:43	DEP	16R	GTI4542	747-LCF		NW3
WOH002							SE1
WOH002	5/10/2014 2:25	DEP	16R	GTI4516	747-LCF		SE1
FIS001							SE4
TOM003	5/10/2014 2:40	DEP	16R	GTI4516	747-LCF	Low	NW3
WOH002							SE1
FIS001							SE4
FIS001	5/10/2014 11:03	TRANSITING	T/G	BOE940	737-800	Low	SE4

Caller Code	Date/Time	Operation	Runway	Flight ID	Aircraft Type	Comments	Community
JER002	5/10/2014 15:30	ARR	16R	GTI4356	747-LCF		NE4
FIS001	5/12/2014 15:00	ARR	34L	BOE145	777-W	Low	SE4
FIS001	5/13/2014 0:40	ARR	34L	HAL9992	A330-200	Low	SE4
FIS001	5/13/2014 9:29	ARR	34L	GTI4356	747-LCF	Low	SE4
SMU001	5/13/2014 22:31	DEP	34L	SWA8705	737-700		NW4
FIS001	5/13/2014 23:40	ARR	34L	GTI4356	747-LCF	Low	SE4
MAC002	5/14/2014 21:54	DEP	34L	GTI4516	747-LCF		NW1
WOH002							SE1
FIS001	5/15/2014 7:06	DEP	34L	N183TX	Citation	Low	SE4
FIS001	5/15/2014 10:15	ARR	34L	GTI4151	747-LCF	Low	SE4
SMU001	5/15/2014 10:27	ARR	34L	N889DW	Lear 60	Low	NW4
FIS001							SE4
MAC002	5/15/2014 20:08	ARR	16R	CFMYA	MX2		NW1
SHA003							NW1
FOS003							NW1
MAC002	5/16/2014 10:55	ARR	16R	SWA8500	737-700		NW1
SMU001							NW4
SWE007							NW1
CAR011							NE1
BAD003	5/16/2014 23:28	DEP	16R	GTI4542	747-LCF	Low	SE4
FIS001							SE4
SMU001							NW4
JOH021	5/18/2014 2:10	DEP	34L	HAL9993	A330-200		NW4
EST002							NE1
RAP001	5/18/2014 4:30	DEP	16R	GTI4532	747-LCF		NW3
WOH002							SE1
MCC012	5/18/2014 4:40	DEP	16R	GTI4532	747-LCF		NW4
WOH002	5/19/2014 0:20	DEP	16R	JBU6421	A320		SE1
FIS001							SE4
WOH002	5/20/2014 2:25	ARR	34L	JBU6414	A320		SE1
ROA002	5/20/2014 16:38	UNK	UNK	UNKNOWN	UNKN	Loud	SW2
WOH002	5/21/2014 2:00	DEP	16R	SWA8505	737-300		SE1
WOH002	5/22/2014 22:35	ARR	34L	N883DC	Falcon 900		SE1
FIS001	5/23/2014 16:55	DEP	16R	BOE611	787-8	Low	SE4
FIS001	5/23/2014 17:56	TRANSITING	N/A	CHOPPER 7	Helicopter		SE4
WOH002	5/24/2014 1:15	ARR	34L	GTI4351	747-LCF		SE1
WOH002	5/24/2014 23:40	DEP	16R	GTI4351	747-LCF		SE1
WOH002	5/25/2014 0:50	ARR	16R	GTI4351	747-LCF		SE1
WOH002	5/25/2014 5:40	ARR	34L	GTI4341	747-LCF		SE1
BAD003							SE4
WOH002	5/26/2014 2:40	DEP	16R	HAL9992	A330-200		SE1
BLA008	5/27/2014 5:00	DEP	34L	GTI4542	747-LCF		NE2
WOH002	5/27/2014 22:50	DEP	34L	GTI4512	747-LCF		SE1
TUB002							NE1
MAC002							NW1
BRE005	5/29/2014 1:19	DEP	34L	GTI4546	747-LCF		NW1
RAP001	5/29/2014 4:30	DEP	16R	GTI4562	747-LCF	Low	NW3
FIS001							SE4
WOH002							SE1
MCC012							NW4