

# MONTHLY OPERATIONS & NOISE SUMMARY

Paine Field Airport

April 2014

ONLINE AT: <http://www.paineairport.com>

NOISE COMMENT FORM: <http://www.paineairport.com/FormCenter/Noise-Event-Form-3/Noise-Event-Form-43>

NOISE SUMMARY REPORTS: <http://www.paineairport.com/176/Noise-Summary-Reports>

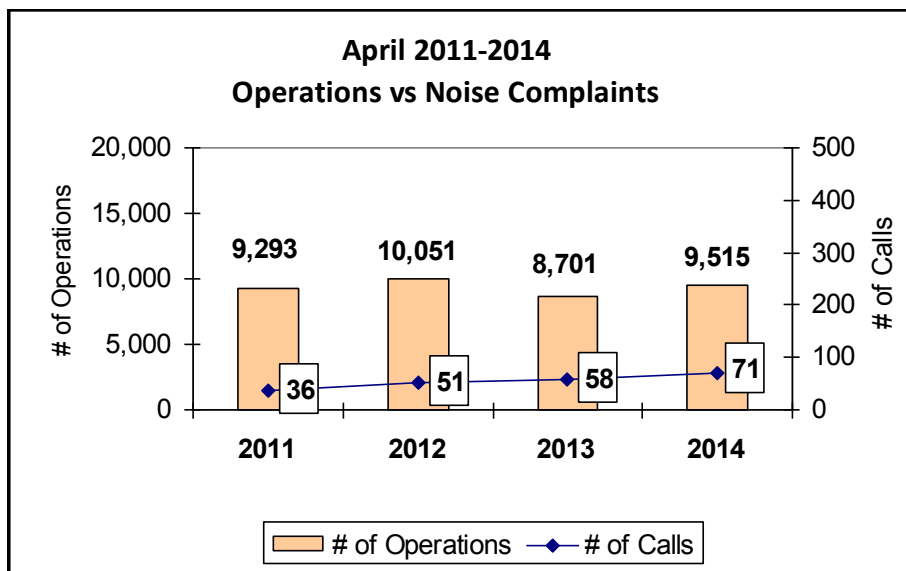
PAINE FIELD HAPPENINGS: <http://www.paineairport.com/177/Paine-Field-Happenings>

## **Noise Brief:**

During April 2014, the airport office received 71 noise related calls and emails from individuals in the surrounding communities. No calls were regarding engine runs.

During April 2014, the FAA Paine Field Air Traffic Control Tower recorded 9,515 flight operations. This is a 9.3% increase in operations from April 2013, which had 8,701 operations.

The four-year average number of flight operations for the month of April is 9,390. Total operations for April 2014 is 1.3% below the four-year average.



## **Complaints:**

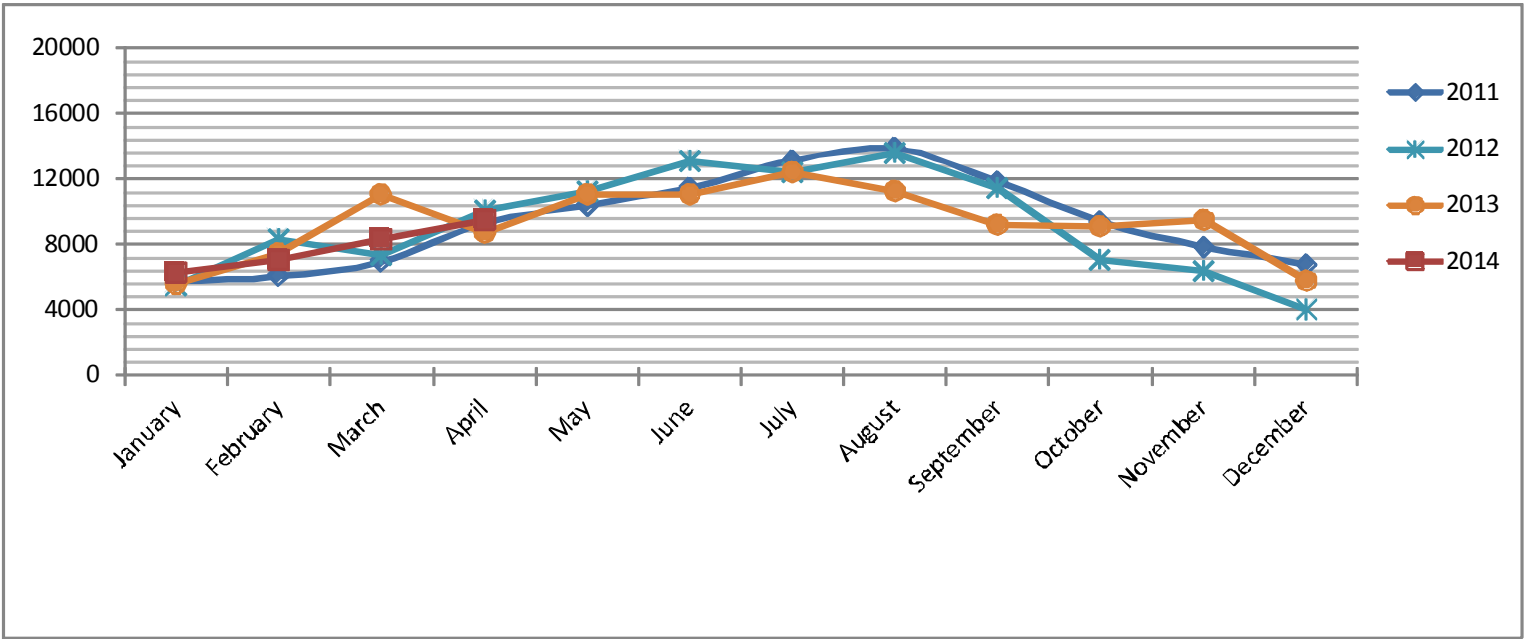
Many factors contribute to the amount of complaints received each month and by how many people. Complaint totals are rarely consistent due to factors ranging from one unusual flight event that generates multiple complaints from a large group of people, an overcast day which blocks in sound, or perhaps a new homeowner that didn't notice the flight paths before the purchase of the property.

**PAINE FIELD AIRPORT • 3220 100TH ST. SW SUITE A • EVERETT, WA 98204**

**NOISE HOTLINE: 425-353-2110 x1**

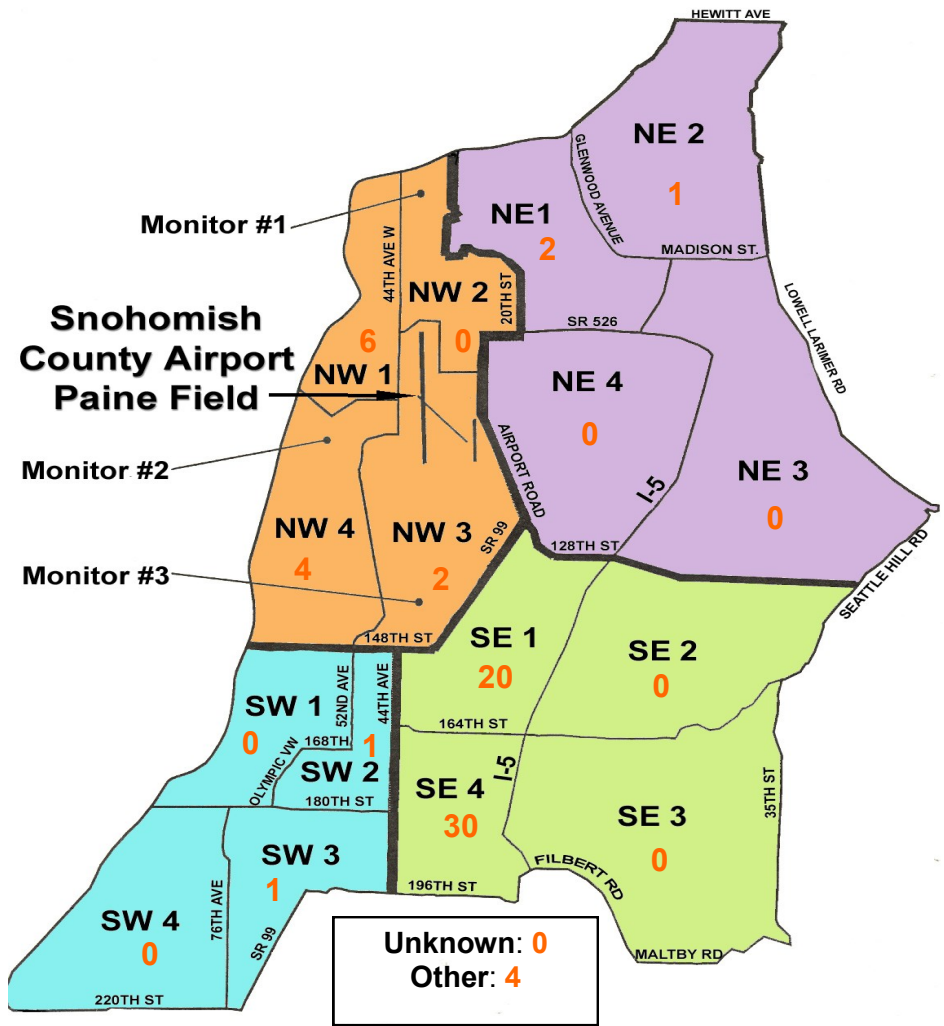
**For further information, please call Airport Operations at 425-388-5125**

# Monthly Operations Levels 2011—2014



## Paine Field Community Quadrants

The graphic to the right depicts Paine Field's 16 noise quadrants. The red numbers within each quadrant represent how many calls were made from that quadrant in the month of April. "Unknown" represents complaints where the caller's quadrant was not identified. "Other" represents complaints from outside the four major quadrants.



## Caller Complaints

Noise complaints are received via telephone hotline or through the airport web page noise complaint form.

Upon receipt, complaints are investigated. Airport staff uses the AIRSCENE data and other sources to help identify which operation generated the noise complaint. The FAA retains radar data for three days before providing it to the airport's AIRSCENE noise monitoring system.

The aircraft operator is then notified of the complaint and made aware of the airport's noise abatement program. Callers who specifically request to be contacted are called back.

Since FAA operations data is not released until the third week of the following month, the monthly

summary report is posted online at [paineairport.com](http://paineairport.com) the fourth week of the following month.

**Caller Identification Codes are listed in the first column of the complaint table. You should be able to identify yourself by the first 3 letters of your last name and the date and time you called in. If you are having trouble identifying your new code, please call the airport office and we will look you up.**

First time callers will receive a one-time hard copy mailing of this monthly noise summary. After the initial mailing, future reports will be posted online at the websites listed on the front of this report. The aircraft operations listed on this page (and next) are presumed to have originated or completed their flights at Paine Field.

Caller Code	Date/Time	Operation	Runway	Flight ID	Aircraft Type	Comments	Community
FIS001	4/1/2014 13:12	DEP	16R	GTI4532	747-LCF	Low	SE4
FIS001	4/2/2014 10:34	DEP	16R	GTI4512	747-LCF	Low	SE4
WOH002	4/2/2014 23:25	DEP	16R	AAL9656	737-300		SE1
WOH002	4/3/2014 1:55	ARR	34L	SWA8500	737-300		SE1
WOH002	4/3/2014 2:35	DEP	16R	SWA8500	737-300		SE1
FOT002	4/3/2014 14:06	DEP	16R	BOE781	737-800		NW1
FIS001	4/3/2014 17:24	ARR	34L	BOE12T	737-700	Low	SE4
FIS001	4/3/2014 22:18	DEP	16R	JBU6417	A-320	Low	SE4
WOH002	4/3/2014 22:20						SE1
FIS001	4/4/2014 9:36	DEP	16R	KQA787	787-8	Low	SE4
FIS001	4/4/2014 19:17	DEP	16R	GTI4512	747-LCF	Low	SE4
BRE005	4/6/2014 1:07	DEP	34L	GTI4532	747-LCF		NW1
BRE005	4/6/2014 3:55	ARR	16R	GTI4151	747-LCF		NW1
FIS001	4/6/2014 11:50	DEP	16R	GTI4542	747-LCF	Loud	SE4
FIS001	4/6/2014 22:24	DEP	16R	JBU6419	A-320	Low	SE4
WOH002	4/6/2014 22:25						SE1
KUL001	4/7/2014 20:58	ARR	16R	N3945X	UNKN		NE1
TUB002	4/8/2014 1:55	DEP	34L	GTI4512	747-LCF		NE1
WOH002	4/8/2014 5:25	DEP	16R	GTI4532	747-LCF		SE1
FIS001	4/8/2014 12:23	DEP	16R	BOE169	777-W	Low	SE4
WOH002	4/8/2014 23:10	DEP	16R	JBU6445	A-320		SE1
FIS001	4/9/2014 18:58	ARR	34L	BOE651	787-8	Low	SE4
GUS002	4/10/2014 17:55	DEP	34L	BOE426	777		SW3
FIS001	4/11/2014 10:21	DEP	16R	N5996J	C-750	Low	SE4

Caller Code	Date/Time	Operation	Runway	Flight ID	Aircraft Type	Comments	Community
FIS001	4/11/2014 11:07	DEP	16R	N83MD	H25B		SE4
FIS001	4/11/2014 17:11	ARR	34L	GTI4151	747-LCF	Low	SE4
FIS001	4/11/2014 21:02	DEP	16R	GTI4532	747-LCF	Low	SE4
FIS001	4/13/2014 9:08	DEP	16R	BOE034	747-8	Low	SE4
MIC002	4/14/2014 16:15	ARR	34L	BOE472	787-8	Loud	OTH - S
CUL001	4/14/2014 22:42	ARR	34L	GTI4351	747-LCF	Low	OTH - S
WOH002	4/14/2014 22:45						SE1
MCC012	4/15/2014 1:43	DEP	16R	GTI4542	747-LCF		NW4
WOH002	4/15/2014 2:05	ARR	34L	JBU6414	A-320		SE1
PAK002	4/15/2014 23:29	DEP	16R	GTI4512	747-LCF		NW4
MAH001	4/15/2014 23:30						SW2
WOH002	4/15/2014 23:30						SE1
BUD001	4/16/2014 22:03	DEP	16R	GTI4512	747-LCF		NW3
FIS001	4/16/2014 22:03						SE4
WOH002	4/16/2014 22:05						SE1
HEN005	4/16/2014 22:05						NW1
FIS001	4/19/2014 3:07	DEP	16R	UNKNOWN	UNKNOWN	Low	SE4
JAC005	4/19/2014 13:30	ARR	16R	BOE169	777-W	Low	NW4
WOH002	4/19/2014 22:40	DEP	16R	SWA8705	777-800		SE1
WOH002	4/21/2014 4:40	DEP	16R	GTI4536	747-LCF		SE1
FIS001	4/21/2014 17:57	ARR	16L	N132MV	Helicopter	Low	SE4
MAC002	4/23/2014 13:20	ARR	16R	EJA966	C-750		NW1
WOH002	4/24/2014 0:10	DEP	16R	GTI4536	777-LCF		SE1
FIS001	4/24/2014 3:00	DEP	16R	GTI4516	747-LCF	Low	SE4
WOH002	4/24/2014 3:00						SE1
FIS001	4/24/2014 9:12	DEP	16R	BOE313	777-300	Low	SE4
FIS001	4/24/2014 10:40	DEP	16R	BOE169	777-300	Low	SE4
FIS001	4/24/2014 16:16	DEP	16R	ASA9304	737-400		SE4
FIS001	4/24/2014 22:09	DEP	16R	JBU6413	A-320	Low	SE4
WOH002	4/24/2014 22:10						SE1
RAP001	4/24/2014 22:15						NW3
FIS001	4/26/2014 0:08	DEP	16R	AAL9620	737-800	Low	SE4
WOH002	4/26/2014 0:10						SE1
MAC002	4/26/2014 3:16	DEP	34L	GTI4512	747-LCF	Low	NW1
FIS001	4/26/2014 9:21	T/G	16R	BOE116	777-200	Low	SE4
FIS001	4/26/2014 9:34	T/G	16R	BOE116	777-200	Low	SE4
SMU001	4/28/2014 14:20	T/G	16R	ASA94	737-900		NW4
BLA008	4/28/2014 15:56	ARR	16R	BOE527	747-8		NE2
FIS001	4/28/2014 16:39	DEP	16R	BOE034	747-800	Low	SE4
FIS001	4/28/2014 23:52	DEP	16R	JBU6415	A-320	Low	SE4
WOH002	4/28/2014 23:55						SE1
FIS001	4/29/2014 13:21	DEP	16R	GTI4512	747-LCF	Low	SE4
FIS001	4/29/2014 13:40	DEP	16R	GTI4512	747-LCF	Low	SE4
WOH002	4/29/2014 23:20	DEP	16R	CCA079	777-W		SE1
WOH002	4/30/2014 0:45	DEP	16R	QTR32	777-L		SE1
MIC002	4/30/2014 15:09	ARR	34L	GTI4351	747-LCF	Loud	OTH - S
HOW009	4/30/2014 17:08	ARR	34L	GTI4151	747-LCF		OTH - S