

MONTHLY OPERATIONS & NOISE SUMMARY

Paine Field Airport

January 2014

ONLINE AT [HTTP://WWW.PAINEFIELD.COM](http://www.paineairport.com)

NOISE COMMENT FORM: [HTTP://WWW.PAINEFIELD.COM/NOISEFORM.ASPX](http://www.paineairport.com/noiseform.aspx)

NOISE SUMMARY REPORTS: [HTTP://WWW.PAINEFIELD.COM/NOISE/NOISESUMMARY.HTML](http://www.paineairport.com/noise/noisesummary.html)

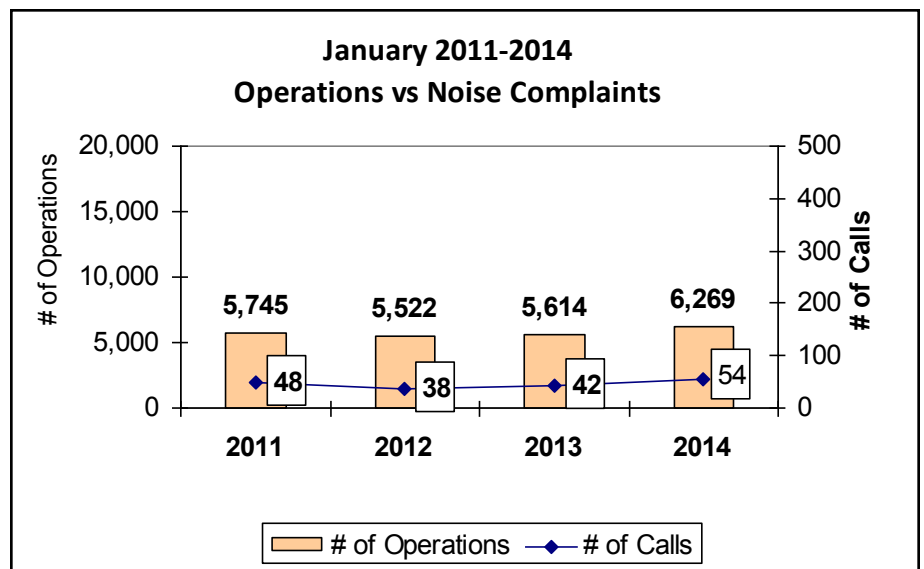
PAINE FIELD HAPPENINGS: [HTTP://WWW.PAINEFIELD.COM/HAPPENINGS/HAPPENINGS.HTML](http://www.paineairport.com/happenings/happenings.html)

Noise Brief:

During January 2014, the airport office received 54 noise related calls and emails from individuals in the surrounding communities. Four calls were regarding engine runs.

During January 2014, the FAA Paine Field Air Traffic Control Tower recorded 6,269 flight operations. This is a 11.6% increase in operations from January 2013, which had 5,614 operations.

The four-year average number of flight operations for the month of January is 5,788. Total operations for January 2014 is 8.3% above the four-year average.



Complaints:

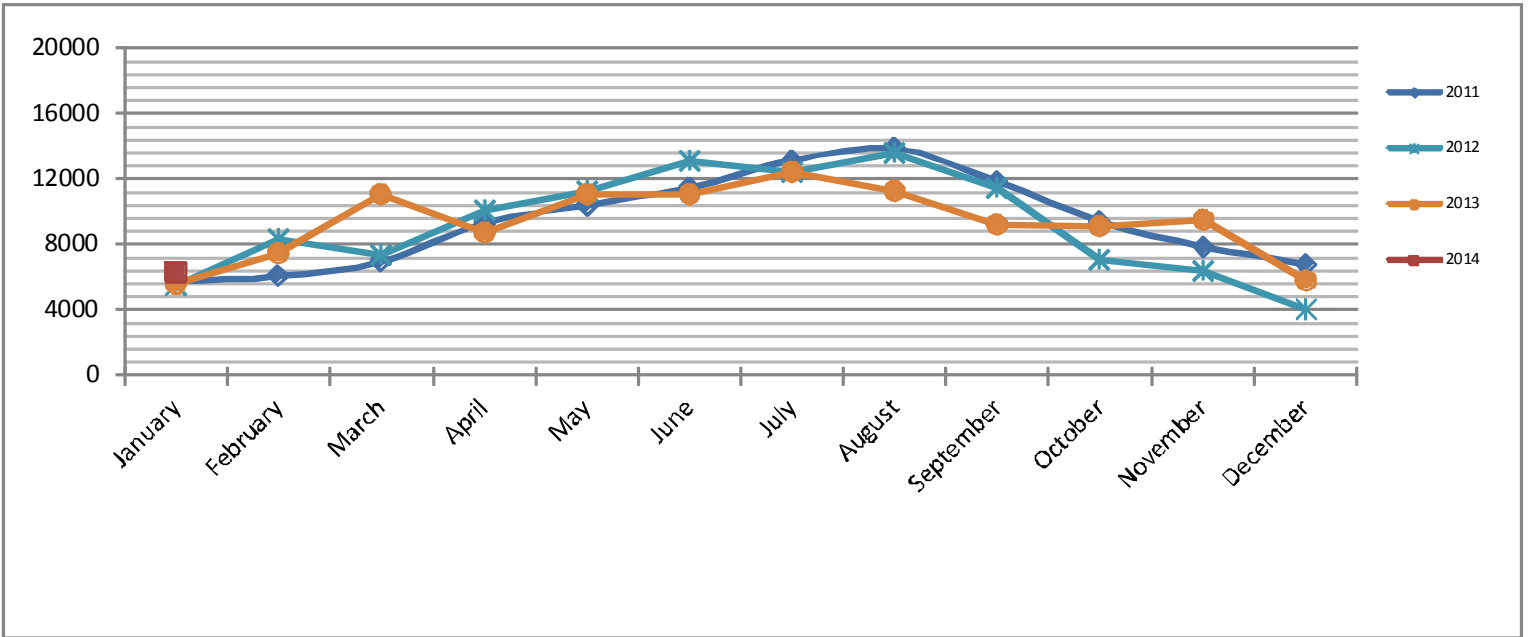
Many factors contribute to the amount of complaints received each month and by how many people. Complaint totals are rarely consistent due to factors ranging from one unusual flight event that generates multiple complaints from a large group of people, an overcast day which blocks in sound, or perhaps a new homeowner that didn't notice the flight paths before the purchase of the property.

PAINE FIELD AIRPORT • 3220 100TH ST. SW SUITE A • EVERETT, WA 98204

NOISE HOTLINE: 425-353-2110 x1

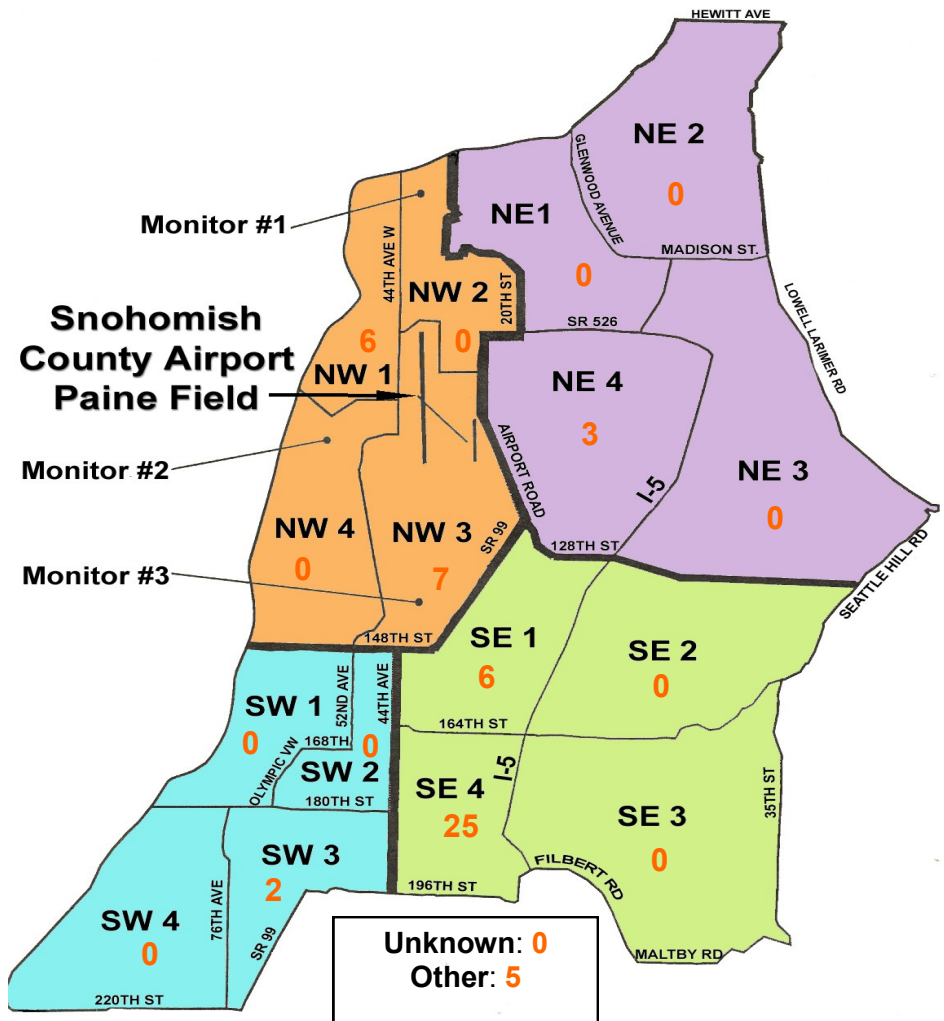
For further information, please call Airport Operations at 425-388-5125

Monthly Operations Levels 2011—2014



Paine Field Community Quadrants

The graphic to the right depicts Paine Field's 16 noise quadrants. The red numbers within each quadrant represent how many calls were made from that quadrant in the month of January. "Unknown" represents complaints where the caller's quadrant was not identified. "Other" represents complaints from outside the four major quadrants.



Caller Complaints

Noise complaints are received via telephone hotline or through the airport web page noise complaint form.

Upon receipt, complaints are investigated. Airport staff uses the AIRSCENE data and other sources to help identify which operation generated the noise complaint. The FAA retains radar data for three days before providing it to the airport's AIRSCENE noise monitoring system.

The aircraft operator is then notified of the complaint and made aware of the airport's noise abatement program. Callers who specifically request to be contacted are called back.

Since FAA operations data is not released until the third week of the following month, the monthly

summary report is posted online at paineairport.com the fourth week of the following month.

Caller Identification Codes are listed in the first column of the complaint table. You should be able to identify yourself by the first 3 letters of your last name and the date and time you called in. If you are having trouble identifying your new code, please call the airport office and we will look you up.

First time callers will receive a one-time hard copy mailing of this monthly noise summary. After the initial mailing, future reports will be posted online at the websites listed on the front of this report. The aircraft operations listed on this page (and next) are presumed to have originated or completed their flights at Paine Field.

Caller Code	Date/Time	Operation	Runway	Flight ID	Aircraft Type	Comments	Community
FIS001	1/2/2014 9:24	DEP	16R	GTI4512	747-LCF	Low	SE4
FIS001	1/4/2014 12:31	DEP	16R	GTI4516	747-LCF	Loud and low	SE4
FIS001	1/5/2014 12:44	ARR	34L	N214LD	F2TH	Low	SE4
FIS001	1/6/2014 19:58	DEP	16R	GTI4516	747-LCF	Loud and low	SE4
BAB001	1/7/2014 4:00	UNKN	UNKN	UNKNOWN	UNKN		OTH
BAN002	1/7/2014 4:45	N/A	N/A	N/A	N/A	Engine run	NW1
WOH002	1/7/2014 5:00	DEP	16R	GTI4512	747-LCF		SE1
POI005	1/7/2014 5:01						OTH
STA012	1/9/2014 6:10	DEP	16R	GTI4512	747-LCF		NW3
STA012							NW3
WOH002							SE1
BUD001	1/10/2014 20:46	DEP	16R	GTI4532	747-LCF		NW3
MUS003	1/12/2014 6:00	N/A	N/A	N/A	747-LCF	Noise and exhaust from Dreamlifter site	NW1
FIS001	1/12/2014 9:41	DEP	16R	GTI4512	747-LCF	Low and loud	SE4
FIS001	1/12/2014 10:20	DEP	UNK	VDA1561	A124	Loud and low	SE4
RAP001	1/13/2014 4:40	DEP	16R	GTI4516	747-LCF	Loud and low	NW3
FIS001	1/13/2014 4:46						SE4
FIT002	1/13/2014 5:00						NW4
FUL004	1/13/2014 5:00						OTH
ADA006	1/16/2014 3:15	UNKN	UNKN	UNKNOWN	UNKN		OTH
RAP001	1/16/2014 3:40	DEP	16R	GTI4512	747-LCF	Loud and low	NW3
GUS002	1/16/2014 3:45						SW3
WOH002	1/16/2014 3:45						SE1
FIS001	1/16/2014 3:45						SE4

Caller Code	Date/Time	Operation	Runway	Flight ID	Aircraft Type	Comments	Community
GUS002	1/19/2014 17:15	DEP	16R	GTI4512	747-LCF		SW3
FIS001	1/20/2014 11:29	DEP	16R	BOE387	777-W	Loud and low	SE4
FIS001	1/20/2014 12:08	DEP	16R	GTI4532	747-LCF	Loud and low	SE4
FIS001	1/21/2014 15:29	DEP	16R	THA8915	777-W	Loud and low	SE4
BAN002	1/22/2014 4:45	N/A	N/A	N/A	N/A	Engine run	NW1
JOH016	1/22/2014 5:05	DEP	34L	GTI4566	747-LCF	Flight frequency	NW4
TAU001	1/22/2014 11:25	ARR	16R	UNKNOWN	UNKN		OTH
FIS001	1/23/2014 16:18	ARR	34L	GTI4151	747-LCF	Low	SE4
BAN002	1/24/2014 21:45	N/A	N/A	N/A	N/A	Engine run	NW1
BAN002	1/24/2014 22:25	N/A	N/A	N/A	N/A	Engine run	NW1
ASH001	1/24/2014 22:25	ARR	16R	GTI4451	747-LCF		NW1
HAY001	1/27/2014 10:32	DEP	16R	GTI4542	747-LCF	General Complaint	SE4
FIS001	1/27/2014 12:08	DEP	16R	GTI4512	747-LCF	Low and loud	SE4
RAP001	1/28/2014 4:10	DEP	16R	GTI4542	747-LCF		NW3
WOH002	1/28/2014 4:10						SE1
BAD003	1/28/2014 4:11						SE4
PAK002	1/28/2014 4:17						NW4
BAD003	1/28/2014 6:11	DEP	16R	GTI4512	747-LCF	Low and loud	SE4
RAP001	1/28/2014 6:20						NW3
HAY001	1/28/2014 6:20						SE4
WOH002	1/28/2014 6:20						SE1
FIS001	1/28/2014 6:21						SE4
FIS001	1/28/2014 22:11	DEP	16R	N162WC	737	Low and loud	SE4
FIS001	1/29/2014 10:56	DEP	16R	BOE461	737-800	Low and loud	SE4
FIS001	1/30/2014 9:42	DEP	16R	AAL9653	737-800	Low and loud	SE4
FIS001	1/30/2014 9:56	DEP	16R	BOR211	777-300	Low and loud	SE4
FIS001	1/31/2014 1:53	DEP	16R	GTI4532	747-LCF	Low and loud	SE4
FIS001	1/31/2014 10:43	UNKN	UNKN	UNKNOWN	UNKN	Low and loud	SE4
FIS001	1/31/2014 17:56	DEP	16R	GTI4536	747-LCF	Low and loud	SE4
WOH002	1/31/2014 22:50	DEP	16R	JBU6423	A320		SE1