

MONTHLY OPERATIONS & NOISE SUMMARY

Paine Field Airport

December 2013

ONLINE AT [HTTP://WWW.PAINEFIELD.COM](http://www.painefield.com)

NOISE COMMENT FORM: [HTTP://WWW.PAINEFIELD.COM/NOISEFORM.ASPX](http://www.painefield.com/noiseform.aspx)

NOISE SUMMARY REPORTS: [HTTP://WWW.PAINEFIELD.COM/NOISE/NOISESUMMARY.HTML](http://www.painefield.com/noise/noisesummary.html)

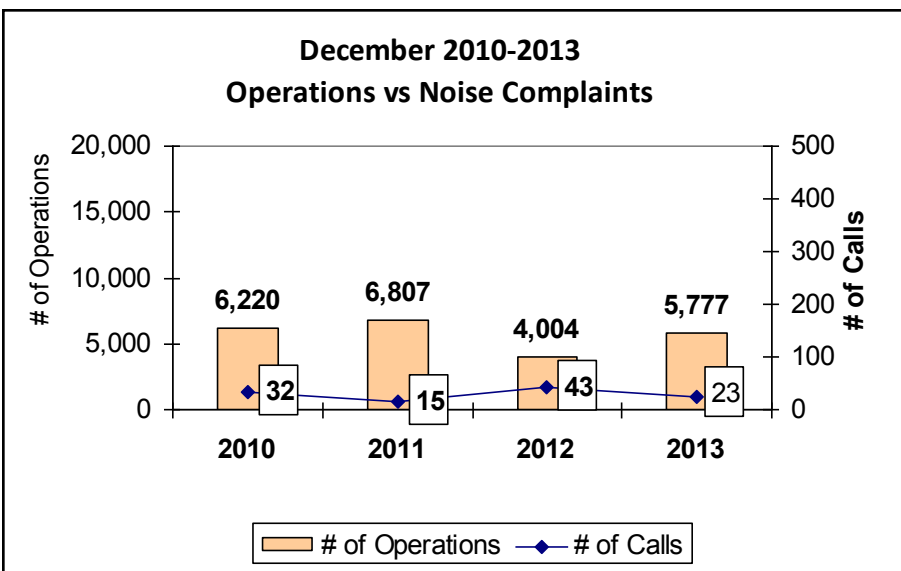
PAINE FIELD HAPPENINGS: [HTTP://WWW.PAINEFIELD.COM/HAPPENINGS/HAPPENINGS.HTML](http://www.painefield.com/happenings/happenings.html)

Noise Brief:

During December 2013, the airport office received 24 noise related calls and emails from individuals in the surrounding communities. one call was regarding an engine run.

During December 2013, the FAA Paine Field Air Traffic Control Tower recorded 5,777 flight operations. This is a 42.2% increase in operations from December 2012, which had 4,004 operations.

The four-year average number of flight operations for the month of December is 5,702. Total operations for December 2013 is 1.32% above the four-year average.



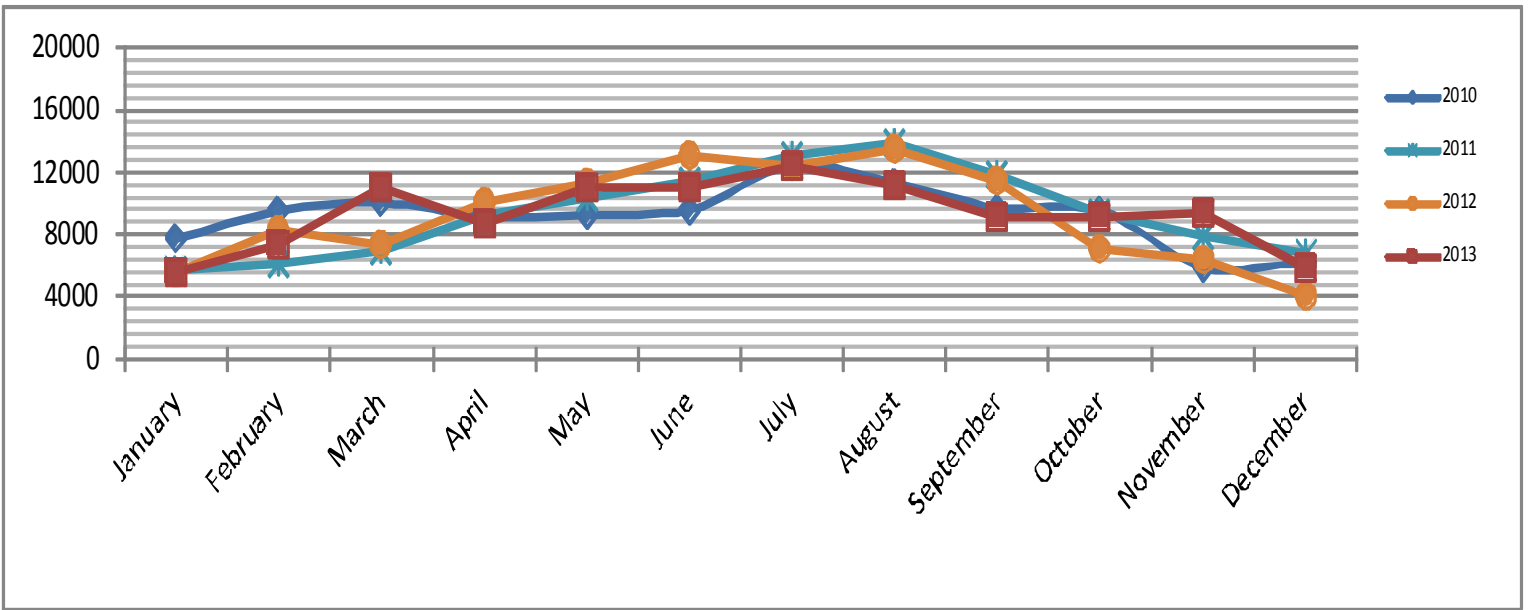
Complaints:

Many factors contribute to the amount of complaints received each month and by how many people. Complaint totals are rarely consistent due to factors ranging from one unusual flight event that generates multiple complaints from a large group of people, an overcast day which blocks in sound, or perhaps a new homeowner that didn't notice the flight paths before the purchase of the property.

PAINE FIELD AIRPORT • 3220 100TH ST. SW SUITE A • EVERETT, WA 98204
NOISE HOTLINE: 425-353-2110 x1

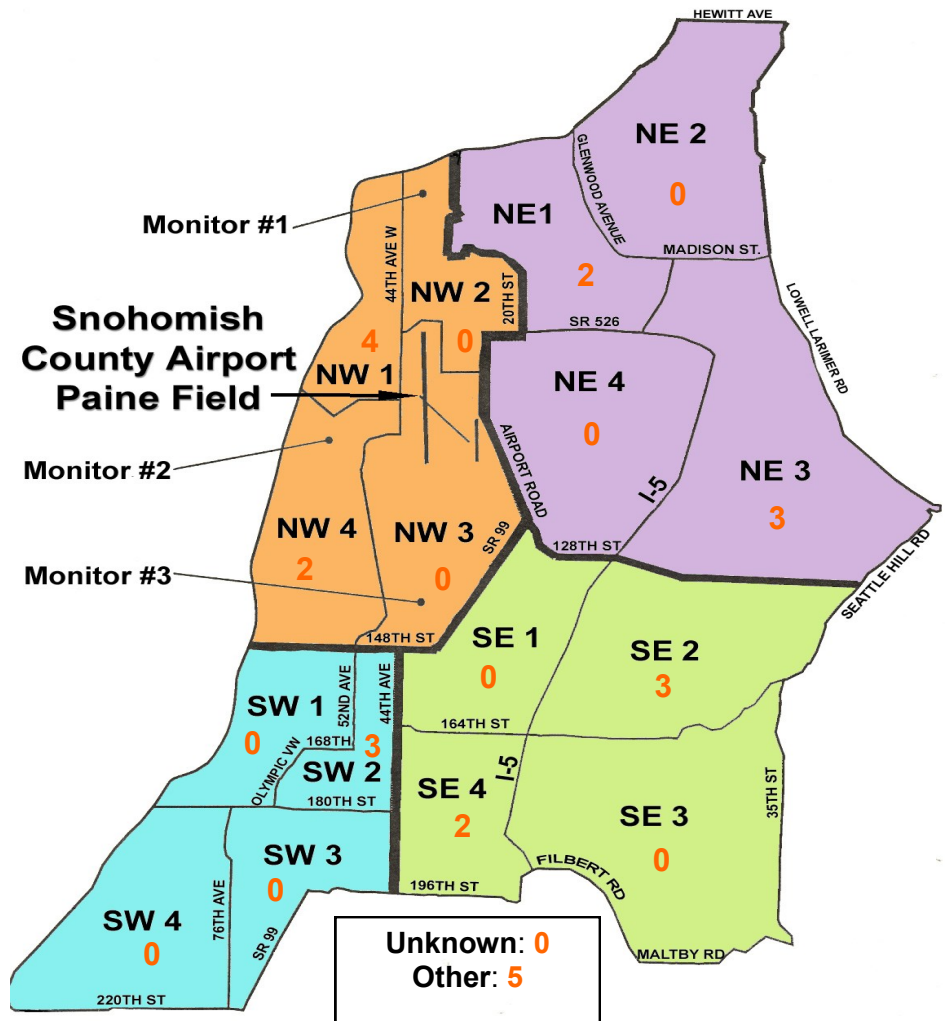
For further information, please call Airport Operations at 425-388-5125

Monthly Operations Levels 2010—2013



Paine Field Community Quadrants

The graphic to the right depicts Paine Field's 16 noise quadrants. The red numbers within each quadrant represent how many calls were made from that quadrant in the month of December. "Unknown" represents complaints where the caller's quadrant was not identified. "Other" represents complaints from outside the four major quadrants.



Caller Complaints

Noise complaints are received via telephone hotline or through the airport web page noise complaint form.

Upon receipt, complaints are investigated. Airport staff uses the AIRSCENE data and other sources to help identify which operation generated the noise complaint. The FAA retains radar data for three days before providing it to the airport's AIRSCENE noise monitoring system.

The aircraft operator is then notified of the complaint and made aware of the airport's noise abatement program. Callers who specifically request to be contacted are called back.

Since FAA operations data is not released until the third week of the following month, the monthly

summary report is posted online at paineairport.com the fourth week of the following month.

Caller Identification Codes are listed in the first column of the complaint table. You should be able to identify yourself by the first 3 letters of your last name and the date and time you called in. If you are having trouble identifying your new code, please call the airport office and we will look you up.

First time callers will receive a one-time hard copy mailing of this monthly noise summary. After the initial mailing, future reports will be posted online at the websites listed on the front of this report. The aircraft operations listed on this page (and next) are presumed to have originated or completed their flights at Paine Field.

Caller Code	Date/Time	Operation	Runway	Flight ID	Aircraft Type	Comments	Community
JOH004	12/1/2013 18:50	DEP	16R	WJA8960	737-800		SE2
JOH004	12/2/2013 14:53	Transiting	N/A	UNKNOWN	UNKN		SE2
DAH001	12/2/2013 18:00	DEP	16R	GTI4512	747-LCF		OTH-S
JOH004	12/2/2013 21:24	Overflight	N/A	N964GB	BE9L		SE2
KUL001	12/4/2013 4:25	DEP	34L	GTI4542	747-LCF		NE1
PAK002	12/6/2013 4:56	DEP	34L	GTI4512	747-LCF		NW4
MOR017	12/6/2013 5:00						SW2
RAP001	12/10/2013 2:20	DEP	16R	GTI4532	747-LCF		NW3
HOW009	12/10/2013 2:22						OTH - S
SMU001	12/10/2013 12:30	DEP	16R	BOE563	747-8	Loud	NW4
EDW004							SW2
BAD003	12/13/2013 0:30	DEP	16R	GTI4512	747-LCF		SE4
MOR017	12/13/2013 6:50	DEP	16R	GTI4532	747-LCF		SW2
STE024	12/14/2013 2:00	DEP	34L	GTI4512	747-LCF		NE1
CAR009	12/14/2013 10:45	ARR	16R	BOE562	747-8		OTH - W
BAN002	12/15/2013 0:39	N/A	N/A	N/A	N/A	High pitched whirring	NW1
LAB003	12/16/2013 2:02	DEP	34L	GTI4512	747-LCF		NW1
LAB003	12/16/2013 3:02	DEP	34L	GTI4512	747-LCF		NW1
PRE002	12/17/2013 22:00	UNK	UNK	UNKNOWN	UNKN	Low and loud	OTH
ENG003	12/18/2013 2:00	DEP	16R	GTI4512	747-LCF		SE4
BUR003	12/18/2013 2:02						NW3
BUR003	12/18/2013 3:02						NW3
REE013	12/18/2013 10:00	N/A	N/A	N/A	N/A	General complaint low frequent large jets	OTH-N
LEE004	12/19/2013 6:00	DEP	34L	GTI4566	747-LCF		NW1