

MONTHLY OPERATIONS & NOISE SUMMARY

Paine Field Airport

November 2013

ONLINE AT [HTTP://WWW.PAINEFIELD.COM](http://www.paineairport.com)

NOISE COMMENT FORM: [HTTP://WWW.PAINEFIELD.COM/NOISEFORM.ASPX](http://www.paineairport.com/noiseform.aspx)

NOISE SUMMARY REPORTS: [HTTP://WWW.PAINEFIELD.COM/NOISE/NOISESUMMARY.HTML](http://www.paineairport.com/noise/noisesummary.html)

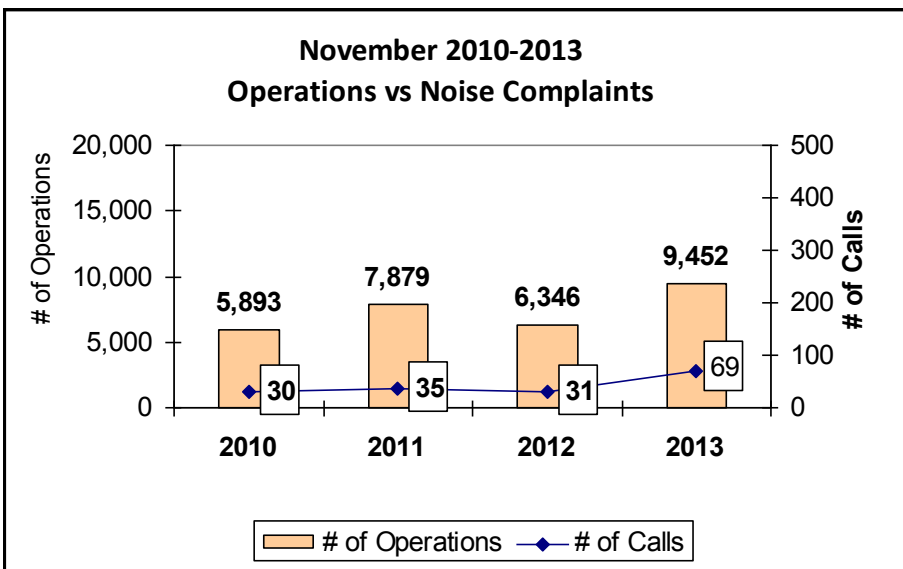
PAINE FIELD HAPPENINGS: [HTTP://WWW.PAINEFIELD.COM/HAPPENINGS/HAPPENINGS.HTML](http://www.paineairport.com/happenings/happenings.html)

Noise Brief:

During November 2013, the airport office received 69 noise related calls and emails from individuals in the surrounding communities. 1 call was regarding an engine run and 1 caller accounted for 51% of all noise complaints this month.

During November 2013, the FAA Paine Field Air Traffic Control Tower recorded 9,452 flight operations. This is a 49% increase in operations from November 2012, which had 6,346 operations.

The four-year average number of flight operations for the month of November is 7,393. Total operations for November 2013 is 28% above the four-year average.



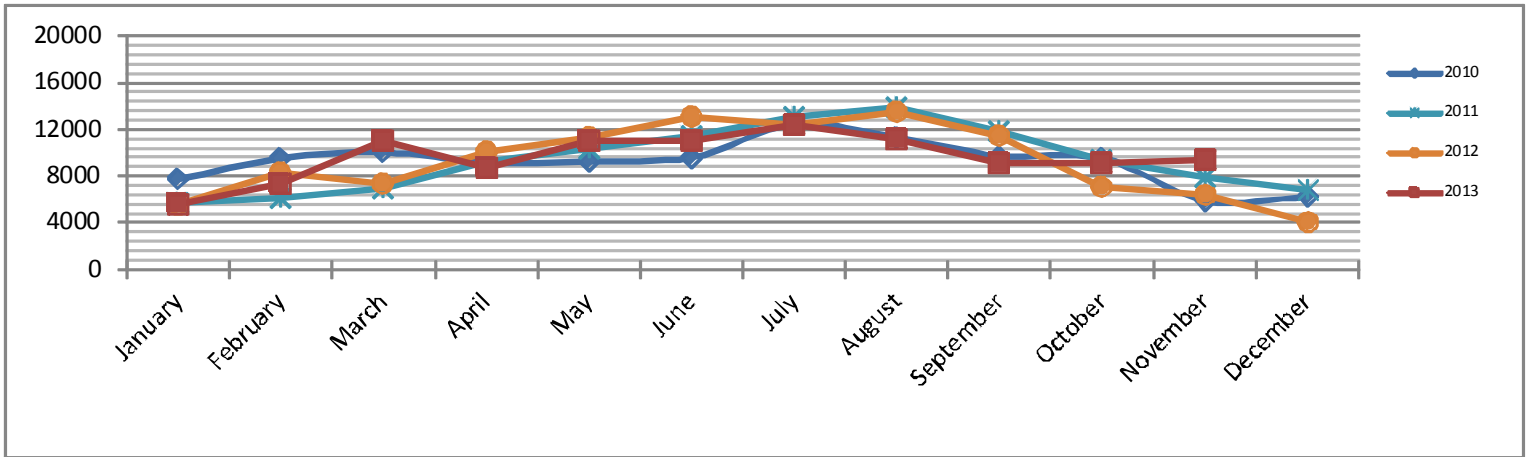
Complaints:

Many factors contribute to the amount of complaints received each month and by how many people. Complaint totals are rarely consistent due to factors ranging from one unusual flight event that generates multiple complaints from a large group of people, an overcast day which blocks in sound, or perhaps a new homeowner that didn't notice the flight paths before the purchase of the property.

PAINE FIELD AIRPORT • 3220 100TH ST. SUITE A SW • EVERETT, WA 98204
NOISE HOTLINE: 425-353-2110 x1

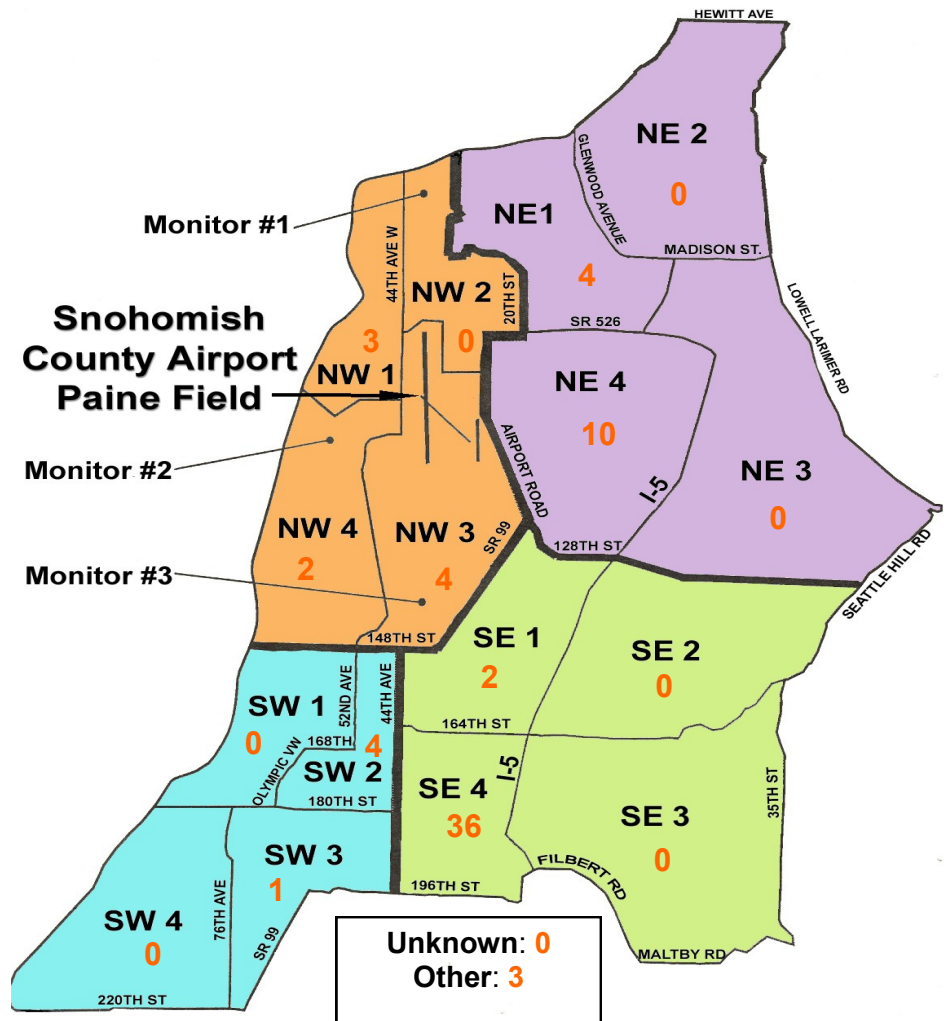
For further information, please call Airport Operations at 425-388-5125

Monthly Operations Levels 2010—2013



Paine Field Community Quadrants

The graphic to the right depicts Paine Field's 16 noise quadrants. The red numbers within each quadrant represent how many calls were made from that quadrant in the month of November. "Unknown" represents complaints where the caller's quadrant was not identified. "Other" represents complaints from outside the four major quadrants.



Caller Complaints

Noise complaints are received via telephone hotline or through the airport web page noise complaint form.

Upon receipt, complaints are investigated. Airport staff uses the AIRSCENE data and other sources to help identify which operation generated the noise complaint. The FAA retains radar data for 3 days before providing it to the airport's AIRSCENE noise monitoring system.

The aircraft operator is then notified of the complaint and made aware of the airport's noise abatement program. Callers who specifically request to be contacted are called back.

Since FAA operations data is not released until the third week of the following month, the monthly

summary report is posted online at paineairport.com the fourth week of the following month.

Caller Identification Codes are listed in the first column of the complaint table. You should be able to identify yourself by the first 3 letters of your last name and the date and time you called in. If you are having trouble identifying your new code, please call the airport office and we will look you up.

First time callers will receive a one-time hard copy mailing of this monthly noise summary. After the initial mailing, future reports will be posted online at the websites listed on the front of this report. The aircraft operations listed on this page (and next) are presumed to have originated or completed their flights at Paine Field.

Caller Code	Date/Time	Operation	Runway	Flight ID	Aircraft Type	Comments	Community
FIS001	11/1/2013 5:04	DEP	16R	GTI4566	747-LCF		SE4
RAP001							NW3
WOH002							SE1
FIS001	11/1/2013 7:48	DEP	16R	NCA695	747-8	Low	SE4
BRE005	11/3/2013 4:08	ARR	16R	GTI4451	747-LCF		NW1
JAK003	11/3/2013 7:50	N/A	N/A	N/A	N/A	General complaint GA	NE4
JAK003	11/3/2013 8:33	N/A	N/A	N/A	N/A	General complaint GA	NE4
FIS001	11/3/2013 10:31	ARR	UNK	BOE306	737-800	Low	SE4
FIS001	11/4/2013 15:04	DEP	16R	GTI4516	747-LCF	Low	SE4
JAK003	11/4/2013 15:09	N/A	N/A	N/A	N/A	General complaint GA	NE4
MOT002	11/4/2013 15:25	N/A	N/A	N/A	N/A	Too many small planes	NW3
JAK003	11/4/2013 16:37	N/A	N/A	N/A	N/A	General complaint GA	NE4
MEL006	11/5/2013 0:13	DEP	34L	SWA8503	737-300		NW4
FIS001	11/5/2013 9:57	DEP	16R	AIC164	787-8	Low	SE4
FIS001	11/5/2013 11:06	DEP	16R	TWY401	CL60	Low	SE4
FIS001	11/5/2013 20:15	UKN	UKN	UKN	UKN		SE4
WOH002	11/7/2013 2:50	DEP	16R	GTI4512	747-LCF	Low	SE1
FIS001							SE4
RAP001							NW3
YAM001							SE4
FIS001	11/7/2013 8:07	UKN	UKN	UKN	UKN	Low	SE4
FIS001	11/8/2013 9:57	UKN	UKN	UKN	UKN	Low	SE4
FIS001	11/8/2013 10:10	UKN	UKN	UKN	UKN	Low	SE4
JAK003	11/8/2013 14:43	N/A	N/A	N/A	N/A	General complaint GA	NE4
JAK003	11/8/2013 15:57	N/A	N/A	N/A	N/A	General complaint GA	NE4

Caller Code	Date/Time	Operation	Runway	Flight ID	Aircraft Type	Comments	Community
FIS001	11/10/2013 9:11	DEP	16R	N18GB	C650	Low	SE4
FIS001	11/10/2013 14:26	DEP	16R	GTI4532	B744	Low	SE4
FIS001	11/10/2013 15:37	ARR	34L	N68236	C340	Low	SE4
KUL001	11/11/2013 11:15	ARR	34L	GTI4532	747-LCF		NE1
KUL001	11/11/2013 13:28	ARR	34L	GTI4512	747-LCF		NE1
JAK003	11/12/2013 9:15	N/A	N/A	N/A	N/A	General complaint GA	NE4
FIS001	11/12/2013 9:52	O	UNK	UAL876	B772		SE4
JAK003	11/13/2013 12:57	N/A	N/A	N/A	N/A	General complaint GA	NE4
FIS001	11/13/2013 15:37	DEP	16R	GTI4542	747-LCF	Low	SE4
FIS001	11/13/2013 15:55	DEP	16R	BOE650	787-8	Low	SE4
ONE002	11/13/2013 16:38	DEP	16R	GTI4512	747-LCF	Low	OTH
FIS001							SE4
MOR017							SW2
FIS001	11/14/2013 12:54	DEP	16R	SVA9020	777-W		SE4
FIS001	11/14/2013 13:23	DEP	16R	BOE327	787-8	Low	SE4
FIS001	11/14/2013 13:56	ARR	UNK	BOE771	737-800	Low	SE4
MOR017	11/15/2013 8:06	DEP	16R	GTI4536	747-LCF		SW2
FIS001	11/16/2013 11:41	DEP	16R	BOE994	777-300	Loud	SE4
JAK003	11/16/2013 12:08	DEP	UNK	UNKN	UNKN		NE4
JAK003	11/16/2013 12:25	N/A	N/A	N/A	N/A	General complaint GA	NE4
EDW004	11/16/2013 14:05	T/G	34L	BOE194	737-800		SW2
WIL025	11/16/2013 15:08	N/A	N/A	N/A	N/A	General complaint GA	NW3
GUS002	11/20/2013 14:45	DEP	34L	BOE381	787-8	Huge low	SW3
FIS001	11/21/2013 11:39	DEP	16R	BOE419	777-300	Low and loud	SE4
FIS001	11/21/2013 12:06	Transit	16R	BOE559	767-300	Low and loud	SE4
SMU001	11/21/2013 14:00	DEP	16R	UNKN	UNKN	Low and loud	NW4
FIS001	11/22/2013 9:58	DEP	16R	BOE559	767-300	Low and loud	SE4
FIS001	11/22/2013 13:01	DEP	16R	BOE310	777-300	Low and loud	SE4
FIS001	11/24/2013 8:14	DEP	16R	BOE650	787-8	Low and loud	SE4
FIS001	11/24/2013 10:26	UKN	UKN	UKN	UKN	Low and loud	SE4
FIS001	11/24/2013 11:26	UKN	UKN	UKN	UKN	Low and loud	SE4
FIS001	11/24/2013 11:56	UKN	UKN	UKN	UKN	Low and loud	SE4
LAB003	11/25/2013 1:29	DEP	34L	GTI4512	747-LCF	Sleep disrupted	NW1
EST002							NE1
FIS001	11/25/2013 16:30	DEP	16R	PAL011	777-W	Low and loud	SE4
Mur004	11/26/2013 15:50	ARR	16R	BOE355	777-300	Outside flight path	OTH N
BAN002	11/26/2013 21:25	N/A	N/A	N/A	N/A	High pitched noise.	NW1
FIS001	11/27/2013 11:42	DEP	34L	9775B	C-172RG	Loud	SE4
EDW004	11/27/2013 16:25	ARR	34L	5499C	C-170	Outbound	SW2
FIS001	11/27/2013 16:53	DEP	16R	AAL9651	737-800	Low and loud	SE4
PRE002	11/27/2013 17:13	ARR	16R	N42SV	GS-2	Low and loud	OTH
FIS001	11/27/2013 18:24	DEP	16R	GTI4536	747-LCF	Low and loud	SE4
EST002	11/28/2013 3:13	DEP	34L	SWA8503	737-700		NE1
FIS001	11/28/2013 11:41	DEP	16R	GTI4512	747-LCF	Low and loud	SE4