

# MONTHLY OPERATIONS & NOISE SUMMARY

Paine Field Airport

October 2013

ONLINE AT [HTTP://WWW.PAINEFIELD.COM](http://www.painefield.com)

NOISE COMMENT FORM: [HTTP://WWW.PAINEFIELD.COM/NOISEFORM.ASPX](http://www.painefield.com/noiseform.aspx)

NOISE SUMMARY REPORTS: [HTTP://WWW.PAINEFIELD.COM/NOISE/NOISESUMMARY.HTML](http://www.painefield.com/noise/noisesummary.html)

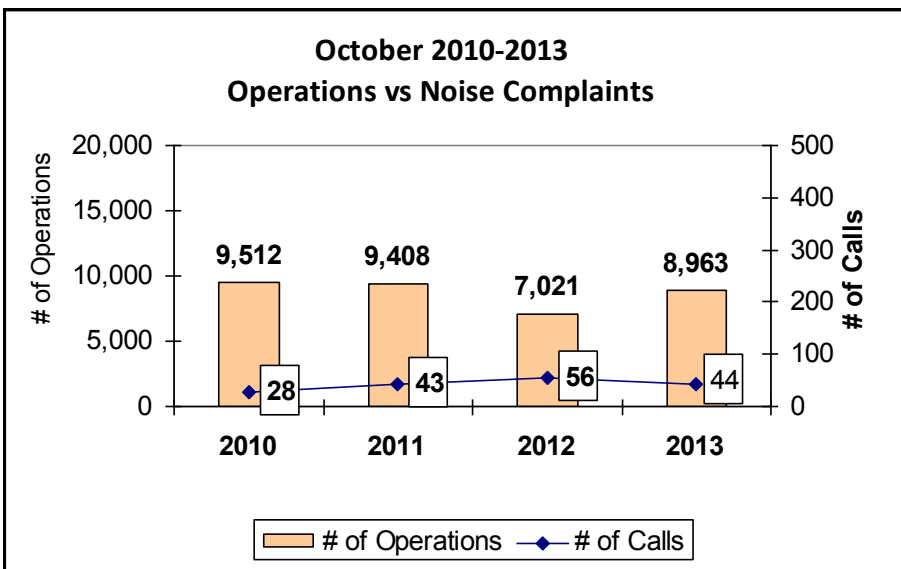
PAINE FIELD HAPPENINGS: [HTTP://WWW.PAINEFIELD.COM/HAPPENINGS/HAPPENINGS.HTML](http://www.painefield.com/happenings/happenings.html)

## Noise Brief:

During October 2013, the airport office received 44 noise related calls and emails from individuals in the surrounding communities. 0 calls were regarding engine runs and 1 caller accounted for 75% of all noise complaints this month.

During October 2013, the FAA Paine Field Air Traffic Control Tower recorded 8,963 flight operations. This is a 27.6% increase in operations from October 2012, which had 7,021 operations.

The four-year average number of flight operations for the month of October is 9,084. Total operations for October 2013 is 1.3% below the four-year average.



## Complaints:

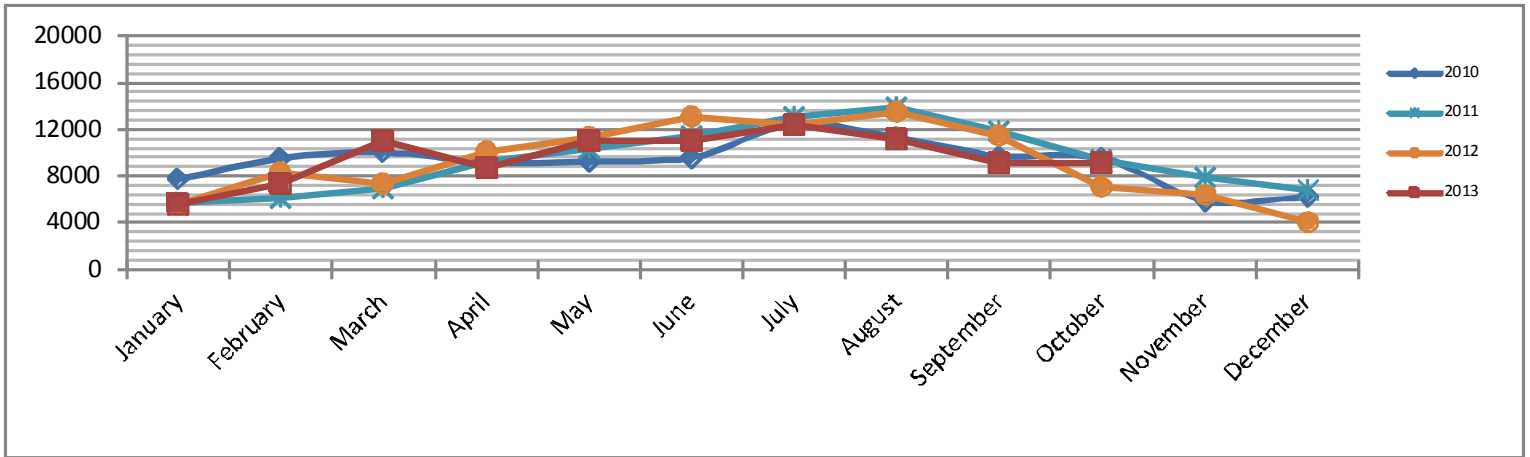
Many factors contribute to the amount of complaints received each month and by how many people. Complaint totals are rarely consistent due to factors ranging from one unusual flight event that generates multiple complaints from a large group of people, an overcast day which blocks in sound, or perhaps a new homeowner that didn't notice the flight paths before the purchase of the property.

**PAINE FIELD AIRPORT • 3220 100TH ST SW • EVERETT, WA 98204**

**NOISE HOTLINE: 425-353-2110 x1**

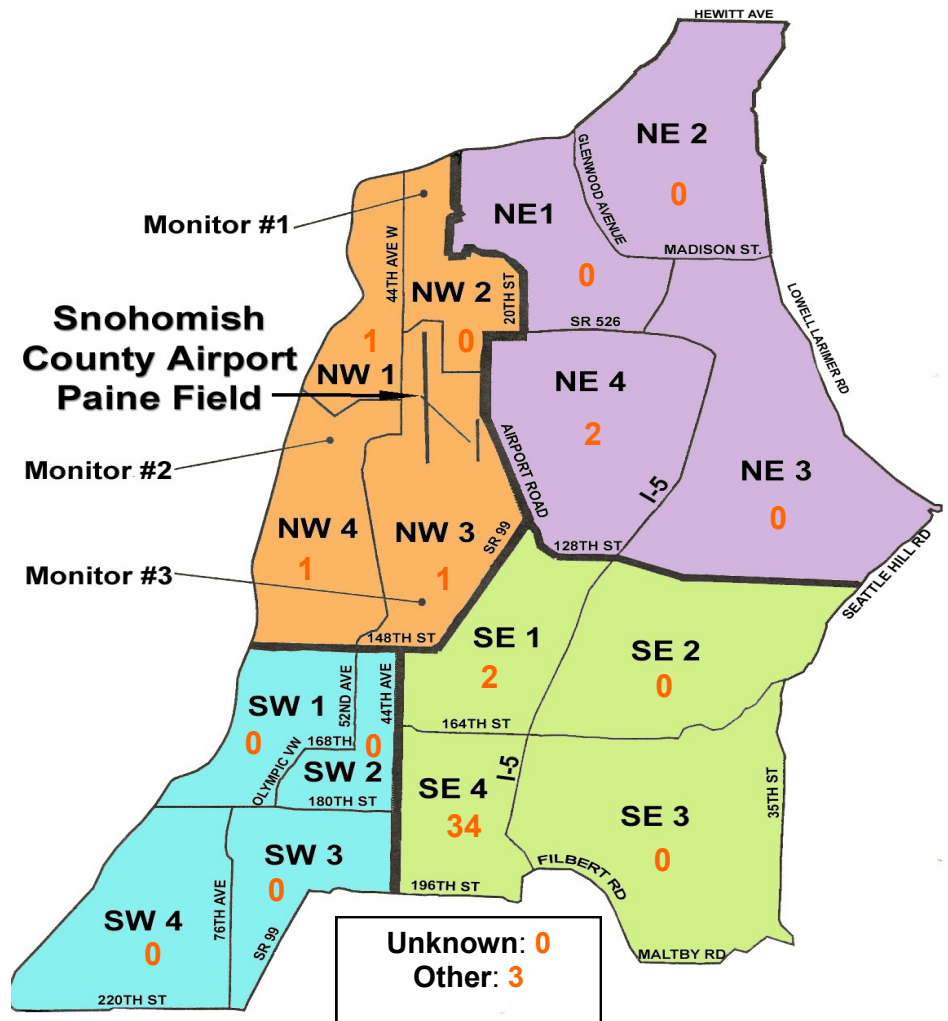
**For further information, please call Airport Operations at 425-388-5125**

# Monthly Operations Levels 2010—2013



## Paine Field Community Quadrants

The graphic to the right depicts Paine Field's 16 noise quadrants. The red numbers within each quadrant represent how many calls were made from that quadrant in the month of October. "Unknown" represents complaints where the caller's quadrant was not identified. "Other" represents complaints from outside the four major quadrants.



## Caller Complaints

Noise complaints are received via telephone hotline or through the airport web page noise complaint form.

Upon receipt, complaints are investigated. Airport staff uses the AIRSCENE data and other sources to help identify which operation generated the noise complaint. The FAA retains radar data for 3 days before providing it to the airport's AIRSCENE noise monitoring system.

The aircraft operator is then notified of the complaint and made aware of the airport's noise abatement program. Callers who specifically request to be contacted are called back.

Since FAA operations data is not released until the third week of the following month, the monthly

summary report is posted online at [www.paineairport.com](http://www.paineairport.com) the fourth week of the following month.

**Caller Identification Codes are listed in the first column of the complaint table. You should be able to identify yourself by the first 3 letters of your last name and the date and time you called in. If you are having trouble identifying your new code, please call the airport office and we will look you up.**

First time callers will receive a one-time hard copy mailing of this monthly noise summary. After the initial mailing, future reports will be posted online at the websites listed on the front of this report. The aircraft operations listed on this page (and next) are presumed to have originated or completed their flights at Paine Field.

Caller Code	Date/Time	Operation	Runway	Flight ID	Aircraft Type	Comments	Community
FIS001	10/1/2013 12:16	UNK	UNK	UNKNOWN	UNKN	and low	SE4
FIS001	10/1/2013 16:26	T/G	16R	BOE032	767-300	and low	SE4
FIS001	10/3/2013 9:15	DEP	16R	BOE143	787-8	and low	SE4
FIS001	10/3/2013 9:45	DEP	16R	SWA8700	737-800	and low	SE4
JAK003	10/5/2013 20:30	N/A	N/A	N/A	N/A	General complaint	NE4
FIS001	10/7/2013 11:44	DEP	16R	BOE521	747-8	and low	SE4
FIS001	10/7/2013 11:57	T/G	16R	BOE074	737-800	and loud	SE4
FIS001	10/7/2013 12:31	UNK	UNK	UNKNOWN	UNKN	and low	SE4
FIS001	10/7/2013 12:35	UNK	UNK	UNKNOWN	UNKN	and low	SE4
FIS001	10/7/2013 13:07	DEP	16R	GTI4512	747-LCF	and low	SE4
FIS001	10/7/2013 13:56	DEP	16R	GTI4532	747-LCF	and loud	SE4
FIS001	10/8/2013 11:38	ARR	34L	BOE178	737-800	and low	SE4
FIS001	10/8/2013 11:44	UNK	UNK	UNKNOWN	UNKN		SE4
FIS001	10/8/2013 11:59	ARR	34L	BOE143	777-300		SE4
JAK003	10/9/2013 17:30	N/A	N/A	N/A	N/A	General complaint	NE4
WOH002	10/10/2013 2:15	DEP	16R	AAL9650	737-800		SE1
AND017	10/10/2013 3:15	DEP	34L	GTI4516	747-LCF		NW1
BUD001	10/11/2013 21:18	DEP	16R	GTI4532	747-LCF	and low	NW3
FIS001	10/11/2013 21:18						SE4
EST003	10/14/2013 10:51	N/A	N/A	N/A	N/A	General complaint	OTH - S
FIS001	10/15/2013 11:19	DEP	16R	GTI4532	747-LCF	and loud	SE4
FIS001	10/16/2013 10:17	DEP	16R	GTI4512	747-LCF	and low	SE4
GRU002	10/17/2013 17:05	ARR	16R	BOE643	737-800	2 planes too close together overhead.	OTH
FIS001	10/21/2013 14:40	DEP	16R	BOE521	747-8	and low	SE4
FIS001	10/22/2013 9:57	O	UNK	DAL183	757-200	and loud	SE4
FIS001	10/23/2013 20:12	DEP	16R	GTI4341	747-LCF	and low	SE4
FIS001	10/23/2013 20:48	DEP	16R	GTI4512	747-LCF	and low	SE4
FIS001	10/26/2013 12:10	DEP	16R	GTI4536	747-LCF	and low	SE4
FIS001	10/26/2013 16:39	ARR	34L	GTI4636	747-LCF	and low	SE4

Caller Code	Date/Time	Operation	Runway	Flight ID	Aircraft Type	Comments	Community
ONE001	10/27/2013 16:01	ARR	34L	BOE521	747-8	Low	OTH
BAD003	10/27/2013 6:50	DEP	16R	GTI4563	747-LCF		SE4
FIS001	10/27/2013 14:40	ARR	34L	GTI4652	747-LCF	and low	SE4
FIS001	10/27/2013 16:03	UNK	UNK	UNKNOWN	UNKN	and low	SE4
FIS001	10/27/2013 20:31	UNK	UNK	UNKNOWN	UNKN	and low	SE4
FIS001	10/27/2013 21:06	ARR	34L	GTI4352	747-LCF	and low	SE4
SMU001	10/28/2013 9:54	T/G	34L	WJA8969	737-800		NW4
FIS001	10/28/2013 17:40	UNK	UNK	UNKNOWN	UNKN	and low	SE4
FIS001	10/29/2013 17:20	UNK	UNK	UNKNOWN	UNKN	and low	SE4
FIS001	10/30/2013 0:46	DEP	16R	SWA8501	737-700	and low	SE4
WOH002	10/30/2013 4:40	DEP	16R	GTI4532	747-300		SE1
FIS001	10/31/2013 12:08	DEP	16R	BOE418	737-700	and loud	SE4
FIS001	10/31/2013 12:49	DEP	16R	SWA8751	737-700	and low	SE4
FIS001	10/31/2013 16:14	DEP	16R	KFS915	DC-91	and low	SE4
FIS001	10/31/2013 16:53	UNK	UNK	UNKNOWN	UNKN	and low	SE4