

MONTHLY OPERATIONS & NOISE SUMMARY

Paine Field Airport

September 2013

ONLINE AT [HTTP://WWW.PAINEFIELD.COM](http://www.paineairport.com)

NOISE COMMENT FORM: [HTTP://WWW.PAINEFIELD.COM/NOISEFORM.ASPX](http://www.paineairport.com/noiseform.aspx)

NOISE SUMMARY REPORTS: [HTTP://WWW.PAINEFIELD.COM/NOISE/NOISESUMMARY.HTML](http://www.paineairport.com/noise/noisesummary.html)

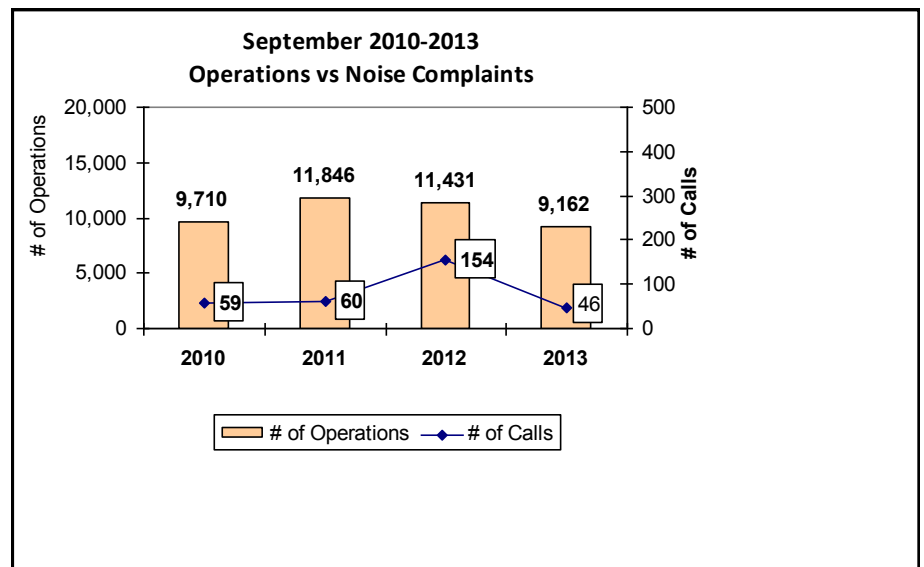
PAINE FIELD HAPPENINGS: [HTTP://WWW.PAINEFIELD.COM/HAPPENINGS/HAPPENINGS.HTML](http://www.paineairport.com/happenings/happenings.html)

Noise Brief:

During September 2013, the airport office received 46 noise related calls and emails from individuals in the surrounding communities. 2 calls were regarding engine runs and 2 callers accounted for 39% of all noise complaints this month.

During September 2013, the FAA Paine Field Air Traffic Control Tower recorded 9,162 flight operations. This is a 19.8% decrease in operations from September 2012, which had 11,431 operations.

The four-year average number of flight operations for the month of September is 10,537. Total operations for September 2013 is 13% below the four-year average.

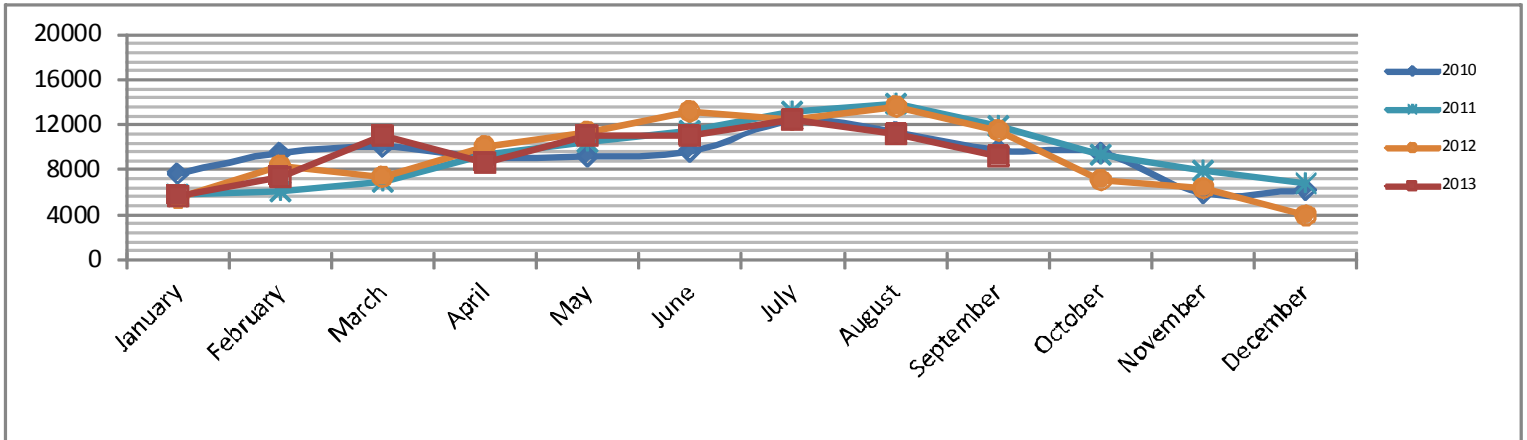


Complaints:

Many factors contribute to the amount of complaints received each month and by how many people. Complaint totals are rarely consistent due to factors ranging from one unusual flight event that generates multiple complaints from a large group of people, an overcast day which blocks in sound, or perhaps a new homeowner that didn't notice the flight paths before the purchase of the property.

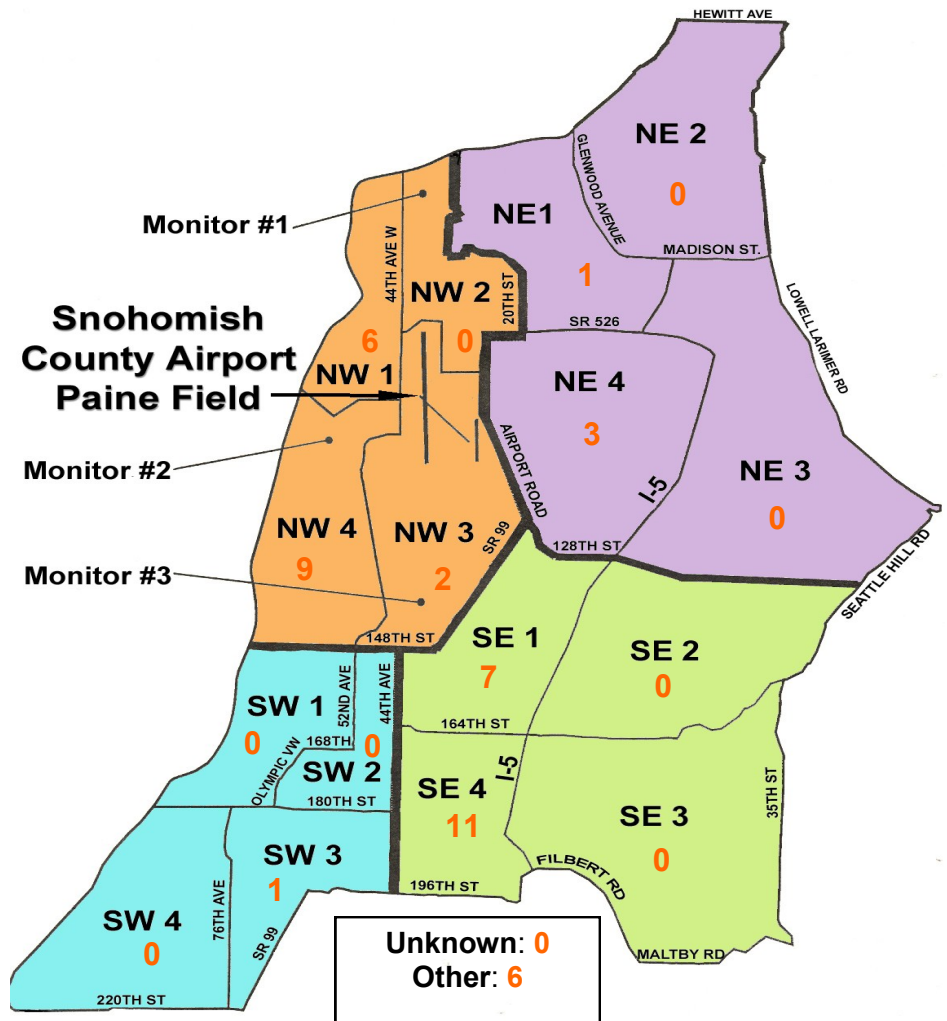
PAINE FIELD AIRPORT • 3220 100TH ST SW • EVERETT, WA 98204
NOISE HOTLINE: 425-353-2110 x1
For further information, please call Airport Operations at 425-388-5125

Monthly Operations Levels 2010—2013



Paine Field Community Quadrants

The graphic to the right depicts Paine Field’s 16 noise quadrants. The red numbers within each quadrant represent how many calls were made from that quadrant in the month of September “Unknown” represents complaints where the caller’s quadrant was not identified. “Other” represents complaints from outside the four major quadrants.



Caller Complaints

Noise complaints are received via telephone hotline or through the airport web page noise complaint form.

Upon receipt, complaints are investigated. Airport staff uses the AIRSCENE data and other sources to help identify which operation generated the noise complaint. The FAA retains radar data for 3 days before providing it to the airport's AIRSCENE noise monitoring system.

The aircraft operator is then notified of the complaint and made aware of the airport's noise abatement program. Callers who specifically request to be contacted are called back.

Since FAA operations data is not released until the third week of the following month, the monthly

summary report is posted online at www.paineairport.com the fourth week of the following month.

Caller Identification Codes are listed in the first column of the complaint table. You should be able to identify yourself by the first 3 letters of your last name and the date and time you called in. If you are having trouble identifying your new code, please call the airport office and we will look you up.

First time callers will receive a one-time hard copy mailing of this monthly noise summary. After the initial mailing, future reports will be posted online at the websites listed on the front of this report. The aircraft operations listed on this page (and next) are presumed to have originated or completed their flights at Paine Field.

Caller Code	Date/Time	Operation	Runway	Flight ID	Aircraft Type	Comments	Community
THA002	9/1/2013 8:00	N/A	N/A	N/A	N/A	General complaint VAW	OTH - S
MIL008	9/1/2013 10:00	DEP	16R	N295	C525	1000 - 1700	NW4
OGD003	9/1/2013 12:35	N/A	N/A	N/A	N/A	General complaint VAW	NW4
BUD001	9/2/2013 13:55	DEP	16R	GTI4512	747-LCF		NW3
FIS001	9/2/2013 23:46	ARR	34L	N5512E	C-172		SE4
FIS001	9/3/2013 9:15	DEP	16R	BOE065	777-200	Low and loud	SE4
FIS001	9/3/2013 9:30	DEP	16R	GTI4636	747-LCF	Low and loud	SE4
CLI004	9/3/2013 16:30	T/G	16L	UNKNOWN	N/A	General aviation planes	NE4
WOH002	9/3/2013 22:20	ARR	34L	AAL9658	737-800		SE1
WOH002	9/3/2013 23:10	DEP	16R	AAL9658	737-800		SE1
WOH002	9/5/2013 0:25	DEP	16R	CCA079	777-W		SE1
ELD001	9/8/2013 17:28	DEP	34L	GTI4512	747-LCF		SW3
MCC004	9/8/2013 19:20	ARR	16R	AAL9652	737-800		NW1
GEE001	9/9/2013 15:32	ARR	16R	N670H	SBR-1		NW4
WOH002	9/9/2013 22:20	ARR	34L	ASA9001	737-800		SE1
FIS001	9/10/2013 16:06	ARR	34L	BOE073	777-300	Low and loud	SE4
FIS001	9/10/2013 21:38	ARR	34L	GTI4351	747-LCF	Low and loud	SE4
CON005	9/11/2013 3:00	UNK	UNK	UNKNOWN	UNKNOWN		NW1
SHE009	9/11/2013 4:00	DEP	34L	GTI4512	747-LCF		NW1
BAR001							NW4
QUI001							NW4
JAN002							NE4
LAB003							NW1
WAL016							NW4
STA011							NW3
QUI001							NW4

Caller Code	Date/Time	Operation	Runway	Flight ID	Aircraft Type	Comments	Community
FIS001	9/11/2013 18:27	DEP	UNK	UNKNOWN	UNKN	Loud	SE4
DAV012	9/11/2013 19:50	ARR	16	RGTI4356	747-LCF		OTH - N
JOH016	9/11/2013 22:45	N/A	N/A	UKNOUN	UNKN	Engine run	NW4
SMU001	9/12/2013 12:48	ARR	34L	BOE821	777-300		NW4
KUL001	9/12/2013 23:16	T/G	34L	N1152Z	C-172S		NE1
FIS001	9/13/2013 11:06	DEP	16R	GTI4542	747-LCF	Low	SE4
FIS001	9/14/2013 16:21	DEP	16R	BOE215	787-8		SE4
SAT002	9/16/2013 4:00	N/A	N/A	N/A	N/A	General complaint	OTH
FAH001	9/16/2013 20:38	ARR	16R	N51380	C-172N		OTH
FAH001	9/17/2013 10:40	DEP	16R	N958GC	C-550		OTH
PIC003	9/17/2013 17:03	DEP	34L	BOE540	787-9		OTH
FIS001	9/19/2013 23:12	DEP	16R	SIA8877	777-W	Low and loud	SE4
WOH002	9/20/2013 0:40	ARR	34L	SWA8503	737-300		SE1
WOH002	9/20/2013 2:00	DEP	34L	SWA8504	737-300		SE1
WOH002	9/20/2013 3:40	ARR	34L	GTI4512	747-LCF		SE1
FIS001	9/23/2013 14:04	ARR	34L	BOE801	737-900		SE4
WIL022	9/25/2013 2:30	N/A	N/A	N	N/A	Engine runs	NE4
FIS001	9/25/2013 17:12	ARR	34L	GTI4151	747-LCF	Low and loud	SE4
BRE005	9/26/2013 4:32	DEP	34L	GTI4512	747-LCF		NW1
LAB003							NW1