

# MONTHLY OPERATIONS & NOISE SUMMARY

Paine Field Airport

August 2013

ONLINE AT [HTTP://WWW.PAINEFIELD.COM](http://www.paineairport.com)

NOISE COMMENT FORM: [HTTP://WWW.PAINEFIELD.COM/NOISEFORM.ASPX](http://www.paineairport.com/noiseform.aspx)

NOISE SUMMARY REPORTS: [HTTP://WWW.PAINEFIELD.COM/NOISE/NOISESUMMARY.HTML](http://www.paineairport.com/noise/noisesummary.html)

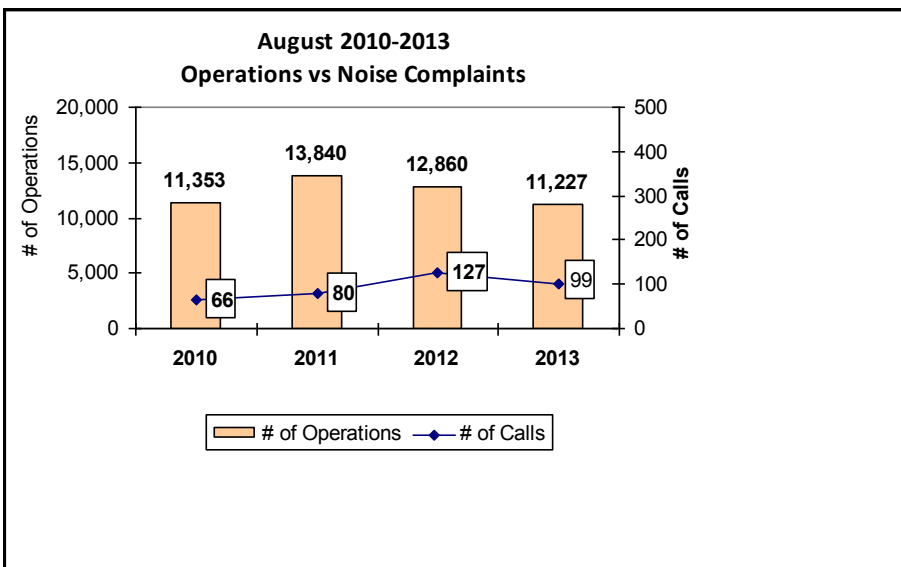
PAINE FIELD HAPPENINGS: [HTTP://WWW.PAINEFIELD.COM/HAPPENINGS/HAPPENINGS.HTML](http://www.paineairport.com/happenings/happenings.html)

## Noise Brief:

During August 2013, the airport office received 99 noise related calls and emails from individuals in the surrounding communities. 2 calls were regarding engine runs and 3 callers accounted for 41% of all noise complaints this month.

During August 2013, the FAA Paine Field Air Traffic Control Tower recorded 11,227 flight operations. This is a 12.7% decrease in operations from August 2012, which had 12,860 operations.

The four-year average number of flight operations for the month of August is 12,320. Total operations for August 2013 is 8.8% below the four-year average.



## Complaints:

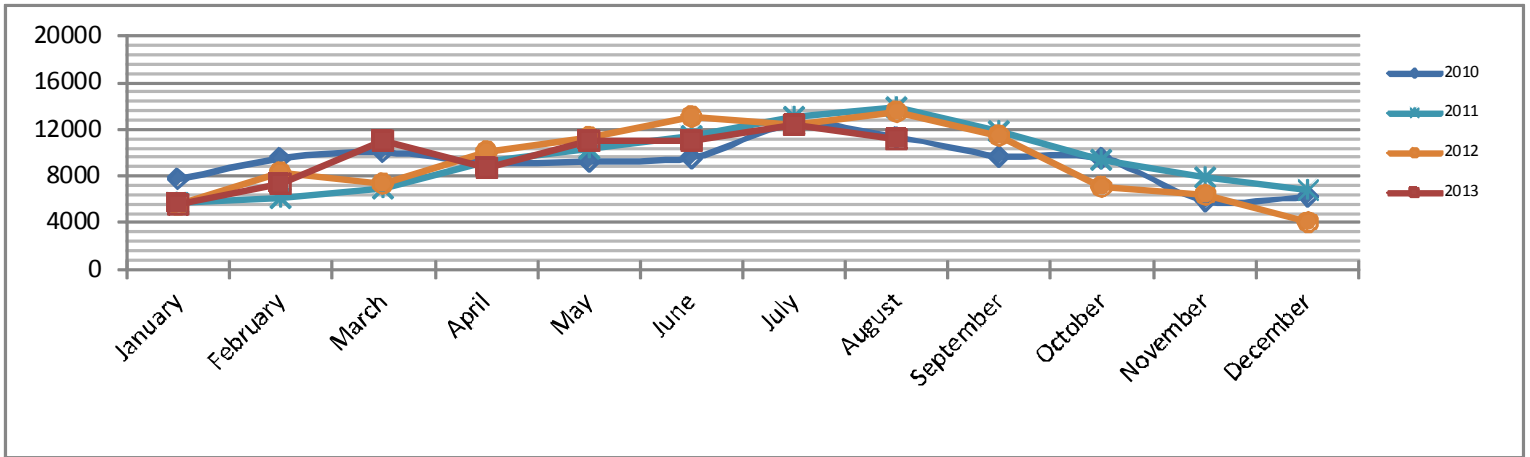
Many factors contribute to the amount of complaints received each month and by how many people. Complaint totals are rarely consistent due to factors ranging from one unusual flight event that generates multiple complaints from a large group of people, an overcast day which blocks in sound, or perhaps a new homeowner that didn't notice the flight paths before the purchase of the property.

**PAINE FIELD AIRPORT • 3220 100TH ST SW • EVERETT, WA 98204**

**NOISE HOTLINE: 425-353-2110 x1**

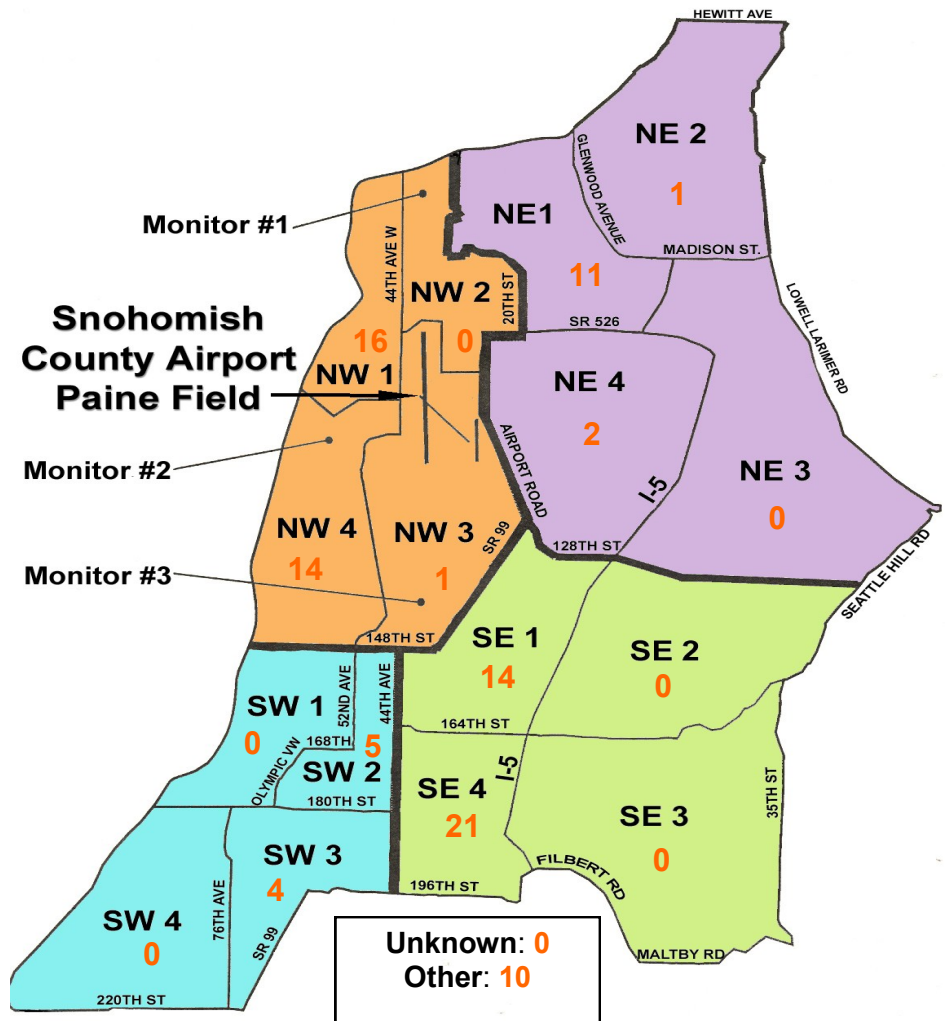
**For further information, please call Airport Operations at 425-388-5125**

# Monthly Operations Levels 2010—2013



## Paine Field Community Quadrants

The graphic to the right depicts Paine Field's 16 noise quadrants. The red numbers within each quadrant represent how many calls were made from that quadrant in the month of August. "Unknown" represents complaints where the caller's quadrant was not identified. "Other" represents complaints from outside the four major quadrants.



## Caller Complaints

Noise complaints are received via telephone hotline or through the airport web page noise complaint form.

Upon receipt, complaints are investigated. Airport staff uses the AIRSCENE data and other sources to help identify which operation generated the noise complaint. The FAA retains radar data for 3 days before providing it to the airport's AIRSCENE noise monitoring system.

The aircraft operator is then notified of the complaint and made aware of the airport's noise abatement program. Callers who specifically request to be contacted are called back.

Since FAA operations data is not released until the third week of the following month, the monthly

summary report is posted online at [www.painefield.com](http://www.painefield.com) the fourth week of the following month.

**Caller Identification Codes are listed in the first column of the complaint table. You should be able to identify yourself by the first 3 letters of your last name and the date and time you called in. If you are having trouble identifying your new code, please call the airport office and we will look you up.**

First time callers will receive a one-time hard copy mailing of this monthly noise summary. After the initial mailing, future reports will be posted online at the websites listed on the front of this report. The aircraft operations listed on this page (and next) are presumed to have originated or completed their flights at Paine Field.

Caller Code	Date/Time	Operation	Runway	Flight ID	Aircraft Type	Comments	Community
EST002	8/1/2013 1:13	ARR	16R	SWA8504	737-800		NE1
EST002	8/1/2013 1:51	DEP	34R	SWA8505	737-800		NE1
LEE004	8/1/2013 3:53	DEP	34L	GTI4512	747-LCF		NW1
EST002	8/1/2013 4:00						NE1
KUL001	8/1/2013 4:01						NE1
HAR020	8/1/2013 20:00	ARR	16R	N542BA	CL-600	Low and loud	SW3
HAR020	8/2/2013 7:00	Overflight	N/A	JZA88	DH8C	Loud	SW3
FIS001	8/2/2013 10:17	DEP	16R	BOE030	747-8		SE4
FIS001	8/2/2013 11:11	DEP	16R	CFNGV	PA31	Low	SE4
HAR020	8/2/2013 16:00	DEP	16R	BOE030	747-8	Low	SW3
LEE004	8/3/2013 3:53	DEP	34L	GTI4512	747-LCF	Loud	NW1
SPI001	8/3/2013 3:54						NW1
WOH002	8/3/2013 11:59	ARR	34L	BOE577	787-8		SE1
FIS001	8/3/2013 16:32	ARR	34L	GTI4351	747-LCF	Low	SE4
FIS001	8/4/2013 18:26	ARR	34L	BOE023	777-300	Low	SE4
WOH002	8/6/2013 1:00	ARR	34L	SWA8509	737-800		SE1
WIL022	8/6/2013 2:30	DEP	34L	SWA8507	737-800		NE4
CAR009	8/6/2013 11:34	ARR	16R	N54857	PA-27		OTH - W
SMU001	8/6/2013 14:05	ARR	34L	BOE38T	T38		NW4
HOW009	8/6/2013 16:58	ARR	34L	GTI4151	747-LCF	Loud	OTH - S
EDW004	8/6/2013 17:11	DEP	34L	BOE417	777-300		SW2
FIS001	8/6/2013 17:46	ARR	34L	BOE383	787-8	Loud	SE4
HOW009	8/8/2013 1:15	ARR	34L	GTI4352	747-LCF	Low	OTH - S
MAR018	8/8/2013 1:17						OTH - S
FIS001	8/8/2013 1:18						SE4
TOM003	8/8/2013 1:20						NW3
WOH002	8/8/2013 1:20						SE1

Caller Code	Date/Time	Operation	Runway	Flight ID	Aircraft Type	Comments	Community
WOH002	8/8/2013 5:40	ARR	16R	GTI4562	747-LCF		SE1
WOH002	8/10/2013 21:55	Transiting	N/A	Airlift 6	Agusta 109		SE1
WOH002	8/10/2013 22:25	Transiting	N/A	Airlift 6	Agusta 109		SE1
FIS001	8/12/2013 12:36	DEP	16R	GTI4532	747-LCF	Low	SE4
EDW004	8/12/2013 18:00	ARR	34L	BOE297	777-300		SW2
EST002	8/13/2013 5:50	ARR	16R	N84271	C-172		NE1
EDW004	8/13/2013 19:33	DEP	34L	BOE320	737-800		SW2
WOH002	8/14/2013 12:20	ARR	16R	BOE821	777-300		SE1
COX003	8/14/2013 12:43	ARR	16R	N1293T	UNKN	Low and loud	NW4
FIS001	8/15/2013 10:54	DEP	16R	BOE352	777-300	Low and loud	SE4
FIS001	8/15/2013 10:59	DEP	16R	BOE352	777-300	Low and loud	SE4
HAL012	8/15/2013 18:04	T/G	16R	N803SB	Sportsman	Low and loud	NW4
HAL012	8/15/2013 18:13	T/G	16R	N803SB	Sportsman	Low and loud	NW4
HAL012	8/15/2013 18:31	T/G	16R	UNKN	UNKN	Low and loud	NW4
HAL012	8/15/2013 18:34	T/G	16R	N88MG	DC3	AND LOW	NW4
SPI001	8/17/2013 4:00	UKN	N/A	UKN	UKN	Loud and early	NW1
BAI001	8/17/2013 12:00	N/A	N/A	N/A	N/A	General complaint	NW1
PRE002	8/17/2013 13:20	ARR	16R	BOE577	787-8		OTH
FIS001	8/17/2013 15:00	DEP	16R	BOE176	787-8		SE4
FIS001	8/17/2013 18:52	ARR	34L	AAL9650	737-800		SE4
BRU008	8/17/2013 21:02	DEP	16R	SWA8503	737-300		OTH
QUI001	8/18/2013 3:55						NW4
SUL002	8/18/2013 4:05	DEP	34L	GTI4512	747-LCF		NW1
RIT001	8/18/2013 4:30						NE1
RIT001	8/18/2013 5:30	ARR	16R	GTI4512	747-LCF		NE1
WOH002	8/18/2013 23:15	ARR	34L	GTI4359	747-LCF		SE1
LAB003	8/19/2013 3:50						NW1
LEE004	8/19/2013 4:00						NW1
DAL002	8/19/2013 4:00	DEP	34L	GTI4542	747-LCF		NE2
KUL001	8/19/2013 4:05						NE1
EST002	8/19/2013 4:35						NE1
MIC002	8/19/2013 17:50	ARR	34L	GTI4352	747-LCF		OTH - S
SUL002	8/20/2013 3:55						NW1
ADO001	8/20/2013 4:00						NW1
SPI001	8/20/2013 4:00	DEP	34L	GTI4512	747-LCF		NW1
LAB003	8/20/2013 4:00						NW1
LEE004	8/20/2013 4:03						NW1
SPI001	8/20/2013 5:00	DEP	34L	GTI4512	747-LCF		NW1
AKA001	8/20/2013 5:00						NW1
EST002	8/20/2013 5:36	DEP	34L	GTI4542	747-LCF		NE1
FIS001	8/20/2013 9:56	ARR	34L	N40XE	DA40		SE4
FIS001	8/21/2013 20:51	T/G	34L	BOE203	737-400	Loud	SE4
WOH002	8/21/2013 22:40	ARR	34L	AAL9650	737-800		SE1
WOH002	8/21/2013 23:05	ARR	34L	HAL9980	767-300		SE1

Caller Code	Date/Time	Operation	Runway	Flight ID	Aircraft Type	Comments	Community
EST002	8/22/2013 5:00	DEP	34L	GTI4512	747-LCF		NE1
BRE005	8/22/2013 5:00						NW1
EDW004	8/22/2013 14:40	ARR	34L	BOE073	777-300		SW2
FIS001	8/25/2013 8:10	DEP	16R	GTI4512	747-LCF	Low and loud	SE4
HAL012	8/26/2013 9:00	DEP	UNK	UNKNOWN	UNKN		NW4
HAL012	8/26/2013 13:00	T/G	16R	N4937P	C-152		NW4
HAL012	8/26/2013 13:48	ARR	16R	UNKNOWN	UNKN		NW4
BOG001	8/26/2013 21:00	ARR	16R	UDA1112	AN124		OTH - N
HAL012	8/27/2013 9:00	DEP	UNK	UNKNOWN	UNKN		NW4
HAL012	8/27/2013 13:00	DEP	16R	N8121K	UNKN		NW4
EDW004	8/28/2013 11:02	DEP	16R	BOE095	777-300		SW2
JOH018	8/28/2013 16:58	ARR	34L	GTI4516	747-LCF		SW3
MEN004	8/29/2013 8:00	DEP	UNK	N5583D	BE35		SE1
FIS001	8/29/2013 10:22	DEP	16R	GTI4542	747-LCF	Low	SE4
FIS001	8/29/2013 11:02	DEP	16R	CHH2728	787-8	Low and loud	SE4
FIS001	8/29/2013 11:21	DEP	16R	BOE166	777-300	Low and loud	SE4
FIS001	8/29/2013 21:33	DEP	16R	N4375R	PA-46	Loud	SE4
NIN001	8/30/2013 19:42	ARR	34L	UDA1112	AN124	Low and loud	OTH
FIS001	8/30/2013 19:43						SE4
WOH002	8/30/2013 23:50	ARR	34L	GTI4351	747-LCF	Low and loud	SE1
FIS001	8/30/2013 23:50						SE4
FIS001	8/31/2013 8:40	DEP	16R	GTI4532	747-LCF	Low	SE4
GOR003	8/31/2013 11:35	ARR	34L	N298EF	LJ-60		NE4
ASL002	8/31/2013 13:00	N/A	N/A	N/A	N/A	Low and loud 1300-1500	NW4
DON002	8/31/2013 15:12	N/A	N/A	N/A	N/A	VAW	SE1
KOL003	8/31/2013 17:10	N/A	N/A	N/A	N/A	VAW	NW4
HOW009	8/31/2013 22:50	ARR	34L	GTI4359	747-LCF	Loud	OTH - S
WOH002	8/31/2013 22:50						SE1