

MONTHLY OPERATIONS & NOISE SUMMARY

Paine Field Airport

July 2013

ONLINE AT [HTTP://WWW.PAINEFIELD.COM](http://www.painefield.com)

NOISE COMMENT FORM: [HTTP://WWW.PAINEFIELD.COM/NOISEFORM.ASPX](http://www.painefield.com/noiseform.aspx)

NOISE SUMMARY REPORTS: [HTTP://WWW.PAINEFIELD.COM/NOISE/NOISESUMMARY.HTML](http://www.painefield.com/noise/noisesummary.html)

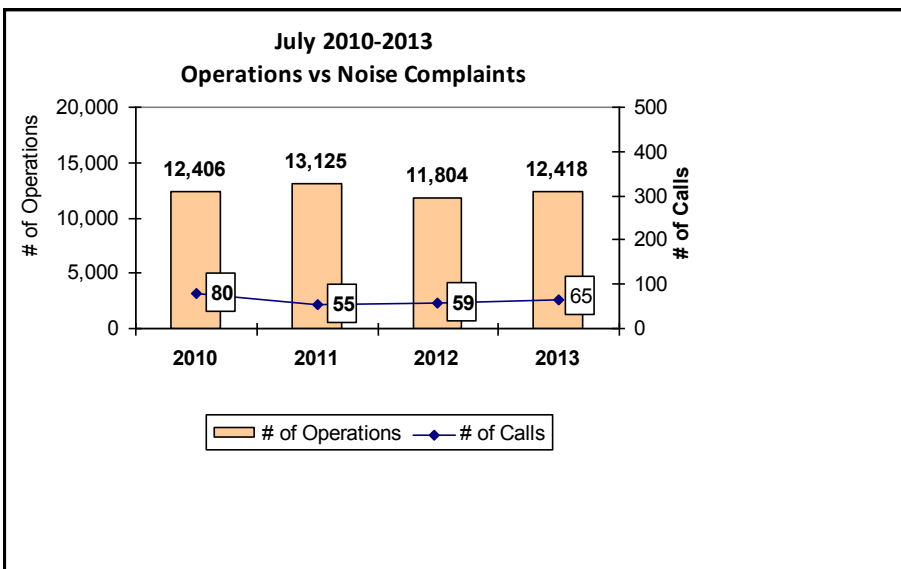
PAINE FIELD HAPPENINGS: [HTTP://WWW.PAINEFIELD.COM/HAPPENINGS/HAPPENINGS.HTML](http://www.painefield.com/happenings/happenings.html)

Noise Brief:

During July 2013, the airport office received 65 noise related calls and emails from individuals in the surrounding communities. No calls were regarding engine runs and 2 callers accounted for 23% of all noise complaints this month.

During July 2013, the FAA Paine Field Air Traffic Control Tower recorded 12,418 flight operations. This is a 5.2% increase in operations from July 2012, which had 11,804 operations.

The four-year average number of flight operations for the month of July is 12,438. Total operations for July 2013 is .2% below the four-year average.



Complaints:

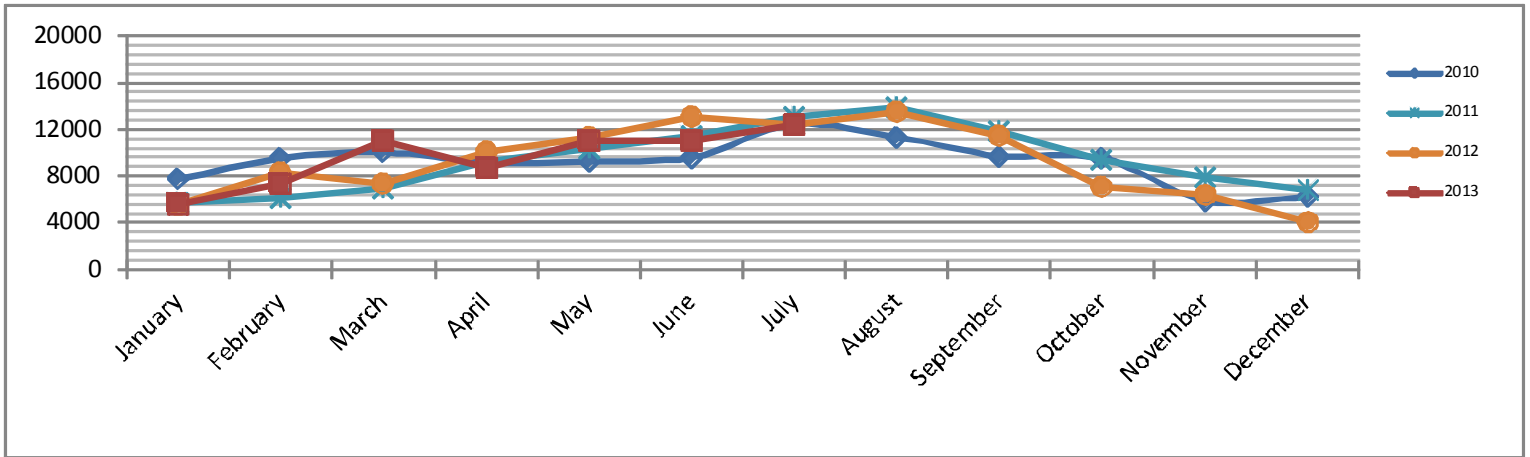
Many factors contribute to the amount of complaints received each month and by how many people. Complaint totals are rarely consistent due to factors ranging from one unusual flight event that generates multiple complaints from a large group of people, an overcast day which blocks in sound, or perhaps a new homeowner that didn't notice the flight paths before the purchase of the property.

PAINE FIELD AIRPORT • 3220 100TH ST SW • EVERETT, WA 98204

NOISE HOTLINE: 425-353-2110 x1

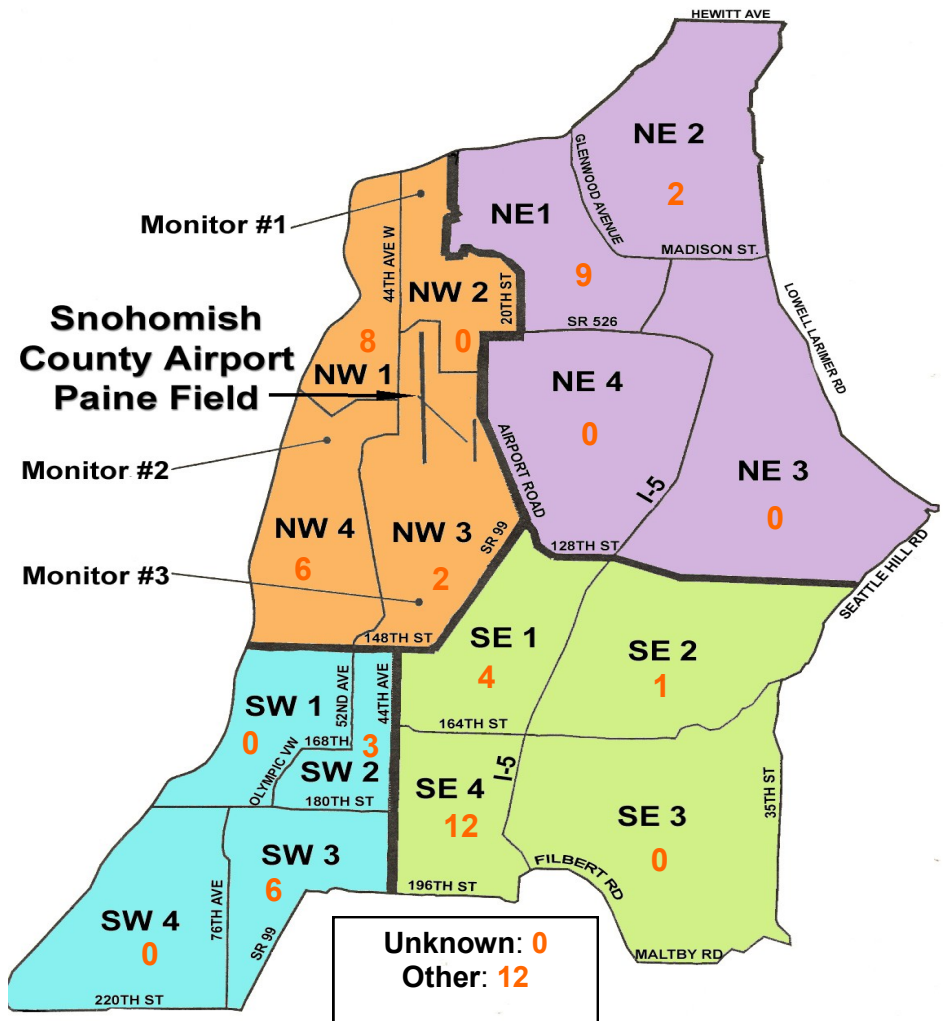
For further information, please call Airport Operations at 425-388-5125

Monthly Operations Levels 2010—2013



Paine Field Community Quadrants

The graphic to the right depicts Paine Field's 16 noise quadrants. The red numbers within each quadrant represent how many calls were made from that quadrant in the month of July. "Unknown" represents complaints where the caller's quadrant was not identified. "Other" represents complaints from outside the four major quadrants.



Caller Complaints

Noise complaints are received via telephone hotline or through the airport web page noise complaint form.

Upon receipt, complaints are investigated. Airport staff uses the AIRSCENE data and other sources to help identify which operation generated the noise complaint. The FAA retains radar data for 3 days before providing it to the airport's AIRSCENE noise monitoring system.

The aircraft operator is then notified of the complaint and made aware of the airport's noise abatement program. Callers who specifically request to be contacted are called back.

Since FAA operations data is not released until the third week of the following month, the monthly

summary report is posted online at www.painefield.com the fourth week of the following month.

Caller Identification Codes are listed in the first column of the complaint table. You should be able to identify yourself by the first 3 letters of your last name and the date and time you called in. If you are having trouble identifying your new code, please call the airport office and we will look you up.

First time callers will receive a one-time hard copy mailing of this monthly noise summary. After the initial mailing, future reports will be posted online at the websites listed on the front of this report. The aircraft operations listed on this page (and next) are presumed to have originated or completed their flights at Paine Field.

Caller Code	Date/Time	Operation	Runway	Flight ID	Aircraft Type	Comments	Community
JOL001	7/1/2013 2:00	ARR	34L	SWA8505	737-800		OTH
LEE004	7/1/2013 2:30	DEP	34L	N54DD	C560		NW1
DRO001	7/1/2013 16:13	ARR	34L	N586PC	F5		OTH
DRO001	7/1/2013 16:15	ARR	34L	N586PC	F5		OTH
FOT002	7/2/2013 14:00	DEP	34L	BOE773	777-300		NW1
STO003	7/2/2013 3:58	DEP	34L	GTI4512	747-LCF		OTH
MAC003	7/3/2013 12:10	ARR	34L	BOE164	777-300		SE2
SMU001	7/3/2013 12:13	DEP	34L	BOE164	777-300	Low	NW4
EAS001	7/3/2013 12:13						SW2
HOW009	7/3/2013 22:58	ARR	34L	GTI4356	747-LCF	Low and loud	OTH
FIS001	7/3/2013 23:00						SE4
EDW004	7/5/2013 13:06	ARR	16R	BOE290	767-300	Low	SW2
GRE013	7/6/2013 11:30	N/A	N/A	N/A	N/A	General complaint	NW4
HOW009	7/6/2013 12:06	ARR	34L	BOE164	777-300		OTH
KUL001	7/8/2013 15:41	ARR	16R	N300AA	LJ45		NE1
WOH002	7/8/2013 21:55	DEP	16R	GTI4532	747-LCF		SE1
BAD003	7/8/2013 21:57						SE4
LAB003	7/9/2013 3:51	DEP	34L	GTI4512	747-LCF		NW1
BRE005	7/9/2013 3:51						NW1
EST002	7/10/2013 5:26						NE1
FIS001	7/10/2013 11:06	ARR	34L	BOE290	767-300	Low and loud	SE4
HOW009	7/10/2013 17:30	ARR	34L	GTI4151	747-LCF	Loud	OTH
BUD001	7/10/2013 17:37						NW3
REE011	7/10/2013 18:00						OTH
EST002	7/12/2013 4:49	ARR	16R	GTI4452	747-LCF		NE1
FIS001	7/12/2013 16:18	ARR	34L	BOE208	777-300		SE4
FIS001	7/12/2013 18:48	ARR	34L	N670H	SBR-1		SE4

Caller Code	Date/Time	Operation	Runway	Flight ID	Aircraft Type	Comments	Community
FIS001	7/13/2013 11:18	UKN	UKN	UKN	UKN		SE4
DIZ002	7/14/2013 14:15	DEP	34L	SWA8501	737-300		SW3
EDW004	7/14/2013 18:08	ARR	34L	BOE260	787-8		SW2
EST002	7/15/2013 1:59	DEP	34L	SWA8508	737-400		NE1
BAR012	7/15/2013 15:36	ARR	34L	BOE201	P8		NW4
FIS001	7/15/2013 18:14	ARR	34L	BOE260	787-8	Low and loud	SE4
WOH002	7/16/2013 0:30	ARR	34L	SWA8502	737-300		SE1
DIZ002	7/16/2013 19:40	ARR	34L	SWA8501	737-800		SW3
VER002	7/16/2013 23:15	N/A	N/A	N/A	N/A	General complaint	OTH
ANE001	7/18/2013 15:35	Transiting	N/A	N/A	N/A	General complaint	NW1
KUL001	7/19/2013 2:20	DEP	34L	GTI4542	747-LCF		NE1
LAB003	7/19/2013 2:20						NW1
EST002	7/19/2013 2:21						NE1
FIS001	7/19/2013 13:02	DEP		N777EH	H25B	Low and loud	SE4
SMU001	7/19/2013 16:17	ARR	16R	N29UB	MIG 29		NW4
ABO001	7/19/2013 23:56	DEP	34L	THA8903	777-300		NW1
GRU002	7/19/2013 23:53						OTH
LEE007	7/20/2013 13:56	DEP	N/A	N/A	N/A	General complaint warbirds	NW1
FIS001	7/20/2013 23:29	ARR	34L	AAL9651	737-800	Low	SE4
WOH002	7/20/2013 23:30						SE1
GRE014	7/21/2013 17:18	ARR	16R	N83MD	H25B	Low	SW3
WOH002	7/22/2013 0:30	ARR	34L	GTI4359	747-LCF		SE1
CAL005	7/22/2013 0:30						OTH
HAL001	7/22/2013 12:33	DEP	16R	DAL589	737-800		NW3
GRE014	7/22/2013 18:34	DEP	16R	N183TX	C25A	Low and loud	NW4
GRE014	7/23/2013 17:18	ARR	34L	GTI4151	747-LCF	Low	SW3
GOL006	7/23/2013 19:20	DEP	34L	GTI4512	747-LCF		SW3
EST002	7/24/2013 3:30	DEP	34L	GTI4512	747-LCF	Loud and too early	NW4
GUS002	7/24/2013 3:33						NE1
HER005	7/25/2013 11:15	ARR	34L	BOE142	777-300		SW3
EST002	7/26/2013 16:00	ARR	34L	BOE124	777-300		OTH
FIS001	7/29/2013 0:33	DEP	16R	GTI4351	747-LCF		NE1
FIS001	7/29/2013 10:34	DEP	16R	N24529	C172		SE4
GUS003	7/29/2013 12:52	DEP	16R	N161WC	EC-135	Too low and hovering	SE4
EST002	7/29/2013 19:00	T/G	16R	N5344K	C172		NE2
FIS001	7/31/2013 6:04	DEP	34L	GTI4566	747-LCF		NE1
FIS001	7/31/2013 10:49	DEP	16R	AAL9704	777W	Low and loud	SE4
HAN004	7/31/2013 17:05	ARR	16R	BOE320	787-8		NE2