

MONTHLY OPERATIONS & NOISE SUMMARY

Paine Field Airport

June 2013

ONLINE AT [HTTP://WWW.PAINEFIELD.COM](http://www.painefield.com)

NOISE COMMENT FORM: [HTTP://WWW.PAINEFIELD.COM/NOISEFORM.ASPX](http://www.painefield.com/noiseform.aspx)

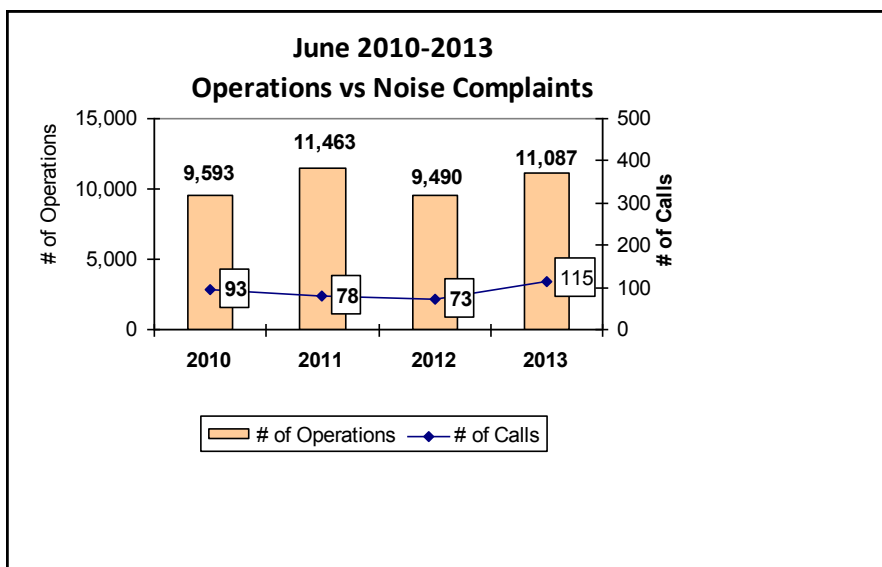
NOISE SUMMARY REPORTS: [HTTP://WWW.PAINEFIELD.COM/NOISE/NOISESUMMARY.HTML](http://www.painefield.com/noise/noisesummary.html)

Noise Brief:

During June 2013, the airport office received 115 noise related calls and emails from individuals in the surrounding communities. 0 calls were regarding engine runs and 2 callers accounted for 41% of all noise complaints this month.

During June 2013, the FAA Paine Field Air Traffic Control Tower recorded 11,087 flight operations. This is a 16.8% increase in operations from June 2012, which had 9,490 operations.

The four-year average number of flight operations for the month of June is 10,408. Total operations for June 2013 is 6.5 above the four-year average.



Complaints:

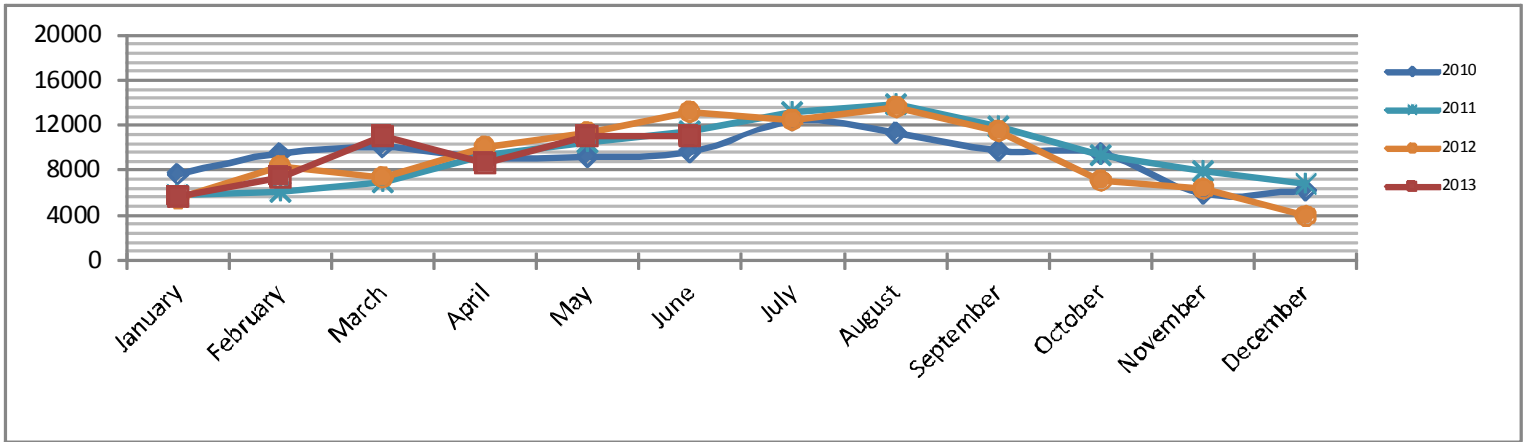
Many factors contribute to the amount of complaints received each month and by how many people. Complaint totals are rarely consistent due to factors ranging from one unusual flight event that generates multiple complaints from a large group of people, an overcast day which blocks in sound, or perhaps a new homeowner that didn't notice the flight paths before the purchase of the property.

PAINE FIELD AIRPORT • 3220 100TH ST SW • EVERETT, WA 98204

NOISE HOTLINE: 425-353-2110 x1

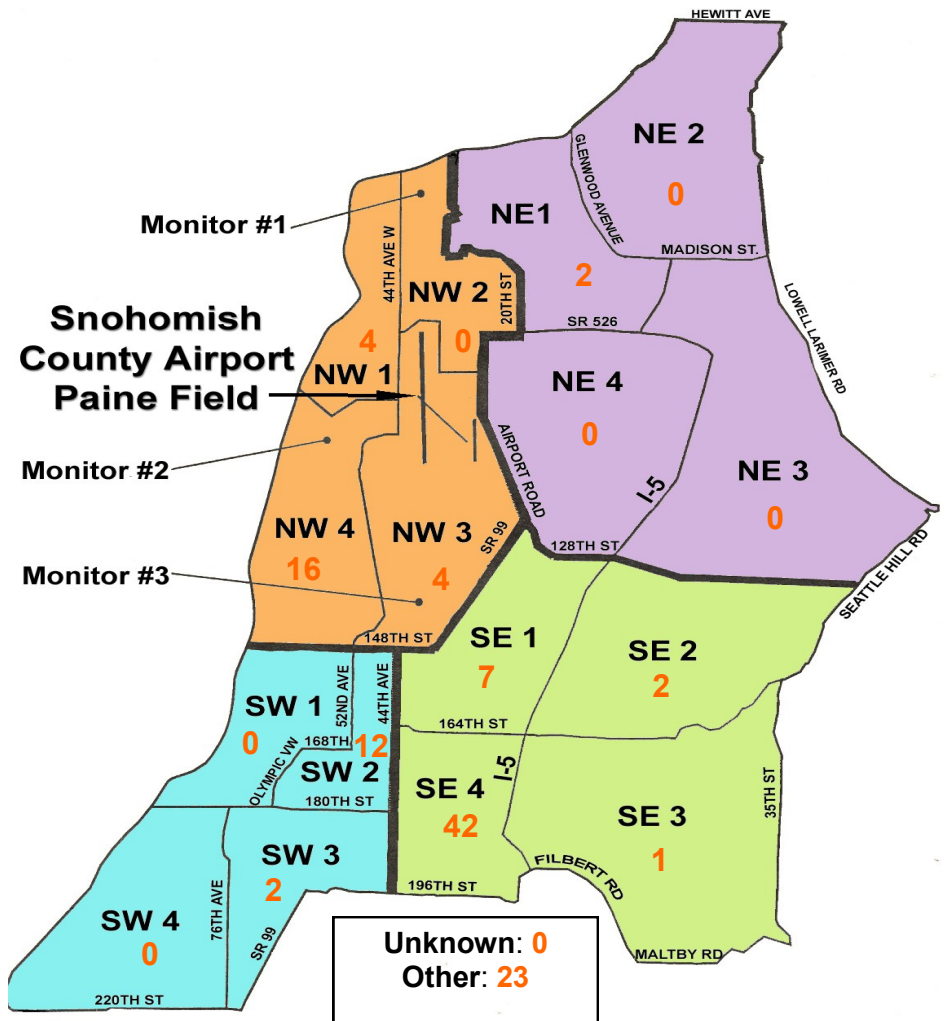
For further information, please call Airport Operations at 425-388-5125

Monthly Operations Levels 2010—2013



Paine Field Community Quadrants

The graphic to the right depicts Paine Field's 16 noise quadrants. The red numbers within each quadrant represent how many calls were made from that quadrant in the month of June. "Unknown" represents complaints where the caller's quadrant was not identified. "Other" represents complaints from outside the four major quadrants.



Caller Complaints

Noise complaints are received via telephone hotline or through the airport web page noise complaint form.

Upon receipt, complaints are investigated. Airport staff uses the AIRSCENE data and other sources to help identify which operation generated the noise complaint. The FAA retains radar data for 3 days before providing it to the airport's AIRSCENE noise monitoring system.

The aircraft operator is then notified of the complaint and made aware of the airport's noise abatement program. Callers who specifically request to be contacted are called back.

Since FAA operations data is not released until the third week of the following month, the monthly

summary report is posted online at www.paineairport.com the fourth week of the following month.

Caller Identification Codes are listed in the first column of the complaint table. You should be able to identify yourself by the first 3 letters of your last name and the date and time you called in. If you are having trouble identifying your new code, please call the airport office and we will look you up.

First time callers will receive a one-time hard copy mailing of this monthly noise summary. After the initial mailing, future reports will be posted online at the websites listed on the front of this report. The aircraft operations listed on this page (and next) are presumed to have originated or completed their flights at Paine Field.

Caller Code	Date/Time	Operation	Runway	Flight ID	Aircraft Type	Comments	Community
FIS001	6/1/2013 7:05	DEP	16R	CSN883	787-8	Low and loud	SE4
CRU002	6/1/2013 16:15	N/A	N/A	UNKNOWN	UNKN		OTH
FIS001	6/1/2013 20:24	T/G	34L	BOE115	737-800	Low and loud	SE4
FRA003	6/2/2013 13:06	ARR	34L	BOE319	787-8		OTH
EDW004	6/2/2013 13:11						SW2
WOH002	6/3/2013 23:10	ARR	34L	GTI4352	747-LCF		SE1
FIS001	6/3/2013 23:11						SE4
FIS001	6/4/2013 9:22	DEP	16R	BOE308	777-300	Low and loud	SE4
FRA003	6/4/2013 13:23	DEP	34L	GTI4512	747-LCF	Low and loud	OTH
FIS001	6/4/2013 17:17	ARR	34L	N478U	CL-60	Low and loud	SE4
WAL016	6/5/2013 3:00	DEP	34L	SWA	737-300		NW4
PAK002	6/5/2013 3:45	DEP	34L	SWA	737-300		NW4
EDW004	6/5/2013 14:12	ARR	34L	BOE275	777-800		SW2
STU006	6/5/2013 16:46	ARR	34L	GTI4151	747-LCF	Low and loud	OTH
FIS001	6/5/2013 19:19	ARR	34L	AAL9614	737-800	Low and loud	SE4
MOH002	6/6/2013 9:20	DEP	34L	GTI4352	747-LCF		NW3
JAC001	6/6/2013 22:00	ARR	16R	N9341	737		NW3
TOM003	6/8/2013 4:55	ARR	34L	GTI4352	747-LCF	Low and loud	NW3
EDW004	6/8/2013 12:15	ARR	34L	BOE957	777-300		SW2
TAN002	6/8/2013 15:21	ARR	34L	UNKNOWN	Malibu		OTH
FIS001	6/8/2013 18:57	ARR	34L	AAL9654	737-800	Low and loud	SE4
TOU001	6/10/2013 4:17	ARR	34L	GTI4351	747-LCF	Loud	SE1
TOM003	6/10/2013 6:05	ARR	34L	GTI4352	747-LCF	Loud	NW3
PAT007	6/10/2013 15:00	ARR	34L	BOE273	787-8		SE3
MCC012	6/11/2013 21:45	DEP	16R	KAL028D	777-W		NW4
PET009	6/11/2013 22:48	UNK	N/A	UNKNOWN	UNKN		SW4

Caller Code	Date/Time	Operation	Runway	Flight ID	Aircraft Type	Comments	Community
WOH002	6/12/2013 4:00	DEP	16R	GTI4512	747-LCF		SE1
WAR012	6/12/2013 4:00						NW4
MCC012	6/12/2013 4:05						NW4
FIS001	6/13/2013 14:10	UNK	N/A	UNKNOWN	UNKN	Loud	SE4
FIS001	6/13/2013 15:23	ARR	34L	BOE576	787-8	Low and loud	SE4
FRA003	6/13/2013 15:40	ARR	34L	GTI4136	747-LCF	Loud	OTH
EDW004	6/13/2013 15:43						SW2
HOW009	6/13/2013 17:18	ARR	34L	BOE572	747-8	Low and loud	OTH
FIS001	6/13/2013 17:19						SE4
PIC003	6/13/2013 17:31	ARR	34L	BOE595	777-200		OTH
FIS001	6/13/2013 18:10	ARR	34L	UNKNOWN	GLASAIR	Loud	SE4
EDW004	6/13/2013 19:29	UNK	N/A	UNKNOWN	UKN	Inbound	SW2
FIS001	6/13/2013 21:31	ARR	34L	GTI4652	747-LCF	Loud	SE4
MAH001	6/15/2013 2:19	DEP	16R	GTI4341	747-LCF		SW2
BAD003	6/15/2013 2:20						SE4
FRA003	6/15/2013 11:45	DEP	34L	BOE115	777-200	Loud and intrusive	OTH
GUS002	6/15/2013 11:52						SW3
FRA003	6/15/2013 11:52						OTH
EDW004	6/15/2013 11:58						SW2
ARN004	6/15/2013 12:45						T/G
DRO001	6/15/2013 12:53	N/A	N/A	N/A	N/A	General complaint	OTH
HAR019	6/15/2013 13:00	DEP	34L	N5130E	T-6		NW4
MEN004	6/15/2013 18:40	DEP	34L	BOE273	787-8		SE1
FIS001	6/16/2013 15:29	DEP	16R	GTI4532	747-LCF	Loud	SE4
HOW009	6/16/2013 16:25	DEP	16R	BAW49	747-LCF		OTH
MAR016	6/16/2013 16:30	DEP	16R	GTI4151	747-LCF		OTH
HOW009	6/16/2013 18:44	ARR	34L	GTI4151	747-LCF		OTH
MUR003	6/16/2013 18:45						OTH
MAH001	6/16/2013 23:15	Transiting	N/A	N8371C	HELO		SW2
LEE004	6/17/2013 2:00	DEP	16R	SWA8504	737-700		NW1
FIS001	6/17/2013 11:14	DEP	16R	BOE595	777-300		SE4
LIN002	6/17/2013 12:08	T/G	16R	N/A	N/A	Loud warbirds	NW4
NGU003	6/17/2013 13:40	DEP	16R	GTI4512	747-LCF		SE4
WOH002	6/18/2013 1:35	DEP	16R	GTI4541	747-LCF		SE1
MAH001	6/18/2013 1:36						SW2
HAG006	6/18/2013 1:36						NW4
FIS001	6/18/2013 10:29	DEP	34L	BOE141	777-300	Loud	SE4
FAH001	6/18/2013 12:02	ARR	16L	N88972	B-25	Loud	OTH
EDW004	6/18/2013 18:20	DEP	34L	BOE106	777-300		SW2
EDW004	6/18/2013 20:25	ARR	34L	BOE106	777-300		SW2
FIS001	6/19/2013 8:50	DEP	16R	GTI4532	747-LCF	Low and loud	SE4
FIS001	6/19/2013 8:52						SE4
WAL011	6/19/2013 9:55	DEP	16R	BOE573	747-8	Low and loud	NW1
FRA003	6/19/2013 11:16	ARR	34L	N850KJ	TBM8		OTH
FAH001	6/19/2013 16:23	ARR	16R	N670H	SBR-1	Low and loud	OTH

Caller Code	Date/Time	Operation	Runway	Flight ID	Aircraft Type	Comments	Community
FIS001	6/20/2013 12:07	DEP	16R	VDA2983	AN-124	Loud	SE4
FIS001	6/21/2013 12:25	DEP	16R	N670H	SBR1		SE4
FIS001	6/21/2013 15:03	DEP	16R	BOE525	747-8	Loud	SE4
LOG002	6/21/2013 16:28	DEP	16R	ANA9397	777-200		SE4
WAL011	6/21/2013 23:00	ARR	34L	GTI4351	747-LCF		NW1
MAR017	6/22/2013 2:05	DEP	16R	GTI4542	747-LCF		NE1
WAL011	6/22/2013 9:16	DEP	16R	N88BF	SBR-1	Low and loud	NW1
FIS001	6/22/2013 9:33	DEP	16R	BOE029	747-8		SE4
SUN003	6/22/2013 11:06	N/A	N/A	UNKNOWN	UNKN	General complaint	OTH
MON009	6/22/2013 17:08	ARR	34L	GTI4151	747-LCF		SW3
EDW004	6/22/2013 19:44	ARR	34L	BOE576	787-8		SW2
SHI005	6/23/2013 9:21	DEP	16R	BOE525	747-8		NW4
SHI005	6/23/2013 9:46	DEP	16R	BOE094	777-300		NW4
FIS001	6/23/2013 13:24	DEP	16R	BOE450	787-8	Low and loud	SE4
PRE002	6/23/2013 14:30	DEP	16R	BOE553	747-8		OTH
FIS001	6/23/2013 15:06	DEP	16R	BOE576	787-8	Loud	SE4
FIS001	6/25/2013 9:13	DEP	16R	GIA8011	777-300	Low	SE4
SMU001	6/25/2013 16:39	DEP	16R	DLH9923	747-8	Low	NW4
FIS001	6/25/2013 16:45						SE4
FIS001	6/25/2013 17:25	ARR	34L	ASA58	737-400	Very Low	SE4
FIS001	6/25/2013 18:26	DEP	16R	ASA90	737-400	Low	SE4
FIS001	6/25/2013 18:41	Transiting	UNK	UPS983	767-300	Low and loud	SE4
FIS001	6/25/2013 18:44	DEP	16R	UNKNOWN	777-W	Low and loud	SE4
ECH002	6/25/2013 21:52	DEP	16R	ETD9056	777-W	Low and loud	SE1
FIS001	6/25/2013 21:54						SE4
ENG003	6/26/2013 5:00	DEP	16R	GTI4512	747-LCF	Frequent traffic	SE4
MON009	6/26/2013 5:05						SW3
HUG003	6/26/2013 5:06						NW4
MON009	6/26/2013 5:28	DEP	16R	GTI4563	747-LCF	Loud and low	SW3
FIS001	6/26/2013 5:30						SE4
ECH002	6/26/2013 5:30						SE1
FIS001	6/26/2013 5:57						SE4
SMU001	6/26/2013 14:36	DEP	16R	PHX51	P-3	Low	NW4
FIS001	6/27/2013 7:25	DEP	16R	BOE164	777-300	Low	SE4
FIS001	6/27/2013 9:05	DEP	16R	BOE450	787-8	Low	SE4
FIS001	6/27/2013 11:05	DEP	16R	GTI4532	747-LCF	Low	SE4
FIS001	6/27/2013 11:33	DEP	16R	N7711B	C-510	Low	SE4
FIS001	6/27/2013 13:43	DEP	16R	BOE290	767-300	Low	SE4
RAY002	6/27/2013 13:43	DEP	16R	BOE164	777-300		OTH
FIS001	6/27/2013 13:47	DEP	16R	BOE290	767-300	Low	SE4
HOW009	6/29/2013 2:08	UNK	N/A	UNKNOWN	UNKN		OTH
HOW009	6/29/2013 2:30	UNK	N/A	UNKNOWN	UNKN		OTH
EST002	6/29/2013 6:45	UNK	N/A	UNKNOWN	UNKN		NE1
HAL012	6/29/2013 12:45	T/G	N/A	N/A	Warbirds	Loud warbirds	NW4