

MONTHLY OPERATIONS & NOISE SUMMARY

Paine Field Airport

September 2012

ONLINE AT WWW.PAINEFIELD.COM

NOISE COMMENT FORM: [HTTP://WWW.PAINEFIELD.COM/NOISE/NOISEFORM.HTML](http://WWW.PAINEFIELD.COM/NOISE/NOISEFORM.HTML)

NOISE SUMMARY REPORTS: [HTTP://WWW.PAINEFIELD.COM/NOISE/NOISESUMMARY.HTML](http://WWW.PAINEFIELD.COM/NOISE/NOISESUMMARY.HTML)

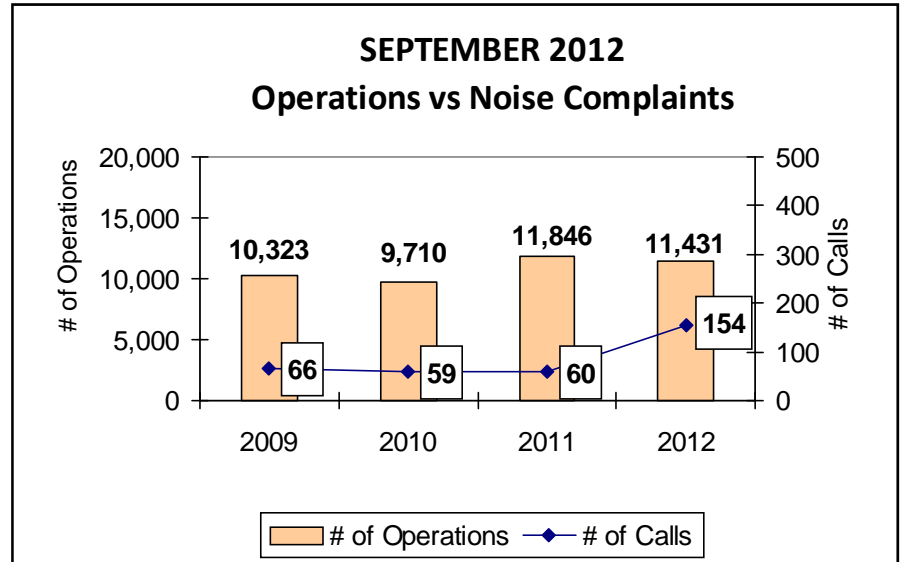
PAINE FIELD HAPPENINGS: [HTTP://WWW.PAINEFIELD.COM/HAPPENINGS/HAPPENINGS.HTML](http://WWW.PAINEFIELD.COM/HAPPENINGS/HAPPENINGS.HTML)

Noise Brief:

During September 2012, the airport office received 154 noise related calls and emails from individuals in the surrounding communities. There were 0 calls regarding engine runs.

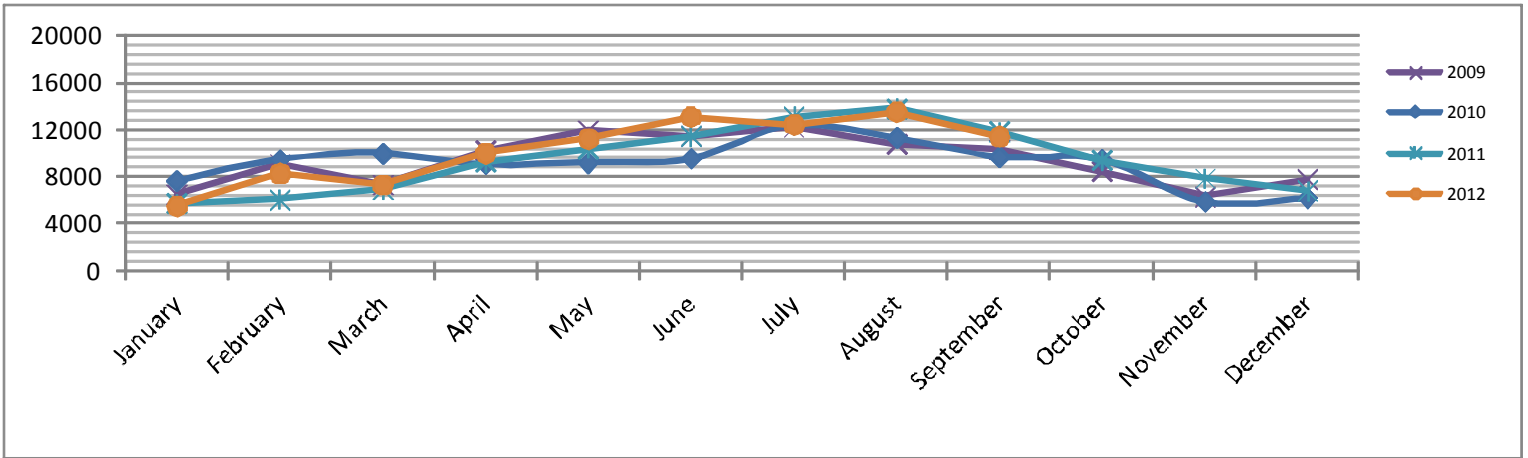
Complaints:

Many factors contribute to the amount of complaints received each month by how many people. Complaint totals are rarely consistent due to factors ranging from one unusual flight event that generates multiple complaints from a large group of people, an overcast day which blocks in sound, or perhaps a new homeowner that didn't notice the flight paths before the purchase of the property.



For further information, please call Airport Operations at 425-388-5125
PAINE FIELD AIRPORT • 3220 100TH ST SW • EVERETT, WA 98204
NOISE HOTLINE: 425-353-2110 x1

Monthly Operations Levels 2009—2012

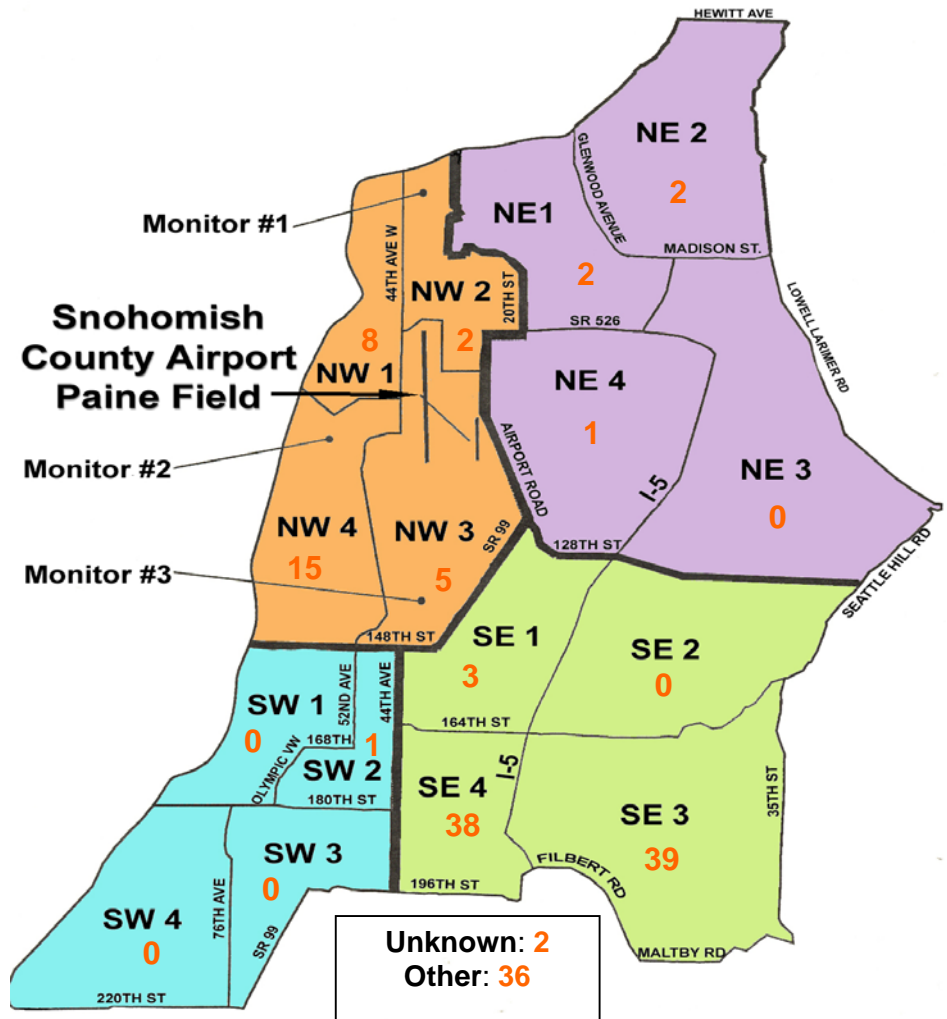


During September 2012, the FAA Paine Field Air Traffic Control Tower recorded 11,431 flight operations. This is a 3.5% decrease in operations from September 2011, which had 11,846 operations.

The four-year average number of flight operations for the month of September is 10,828. Total operations for September 2012 is 5.6% above the four-year average.

Paine Field Community Quadrants

The graphic to the right depicts Paine Field’s 16 noise quadrants. The red numbers within each quadrant represent how many calls were made from that quadrant in the month of September. “Unknown” represents complaints where the caller’s quadrant was not identified. “Other” represents complaints from outside the four



Caller Complaints

Noise complaints are received via telephone hotline or through the airport web page noise complaint form .

Upon receipt, complaints are investigated. Airport staff uses the AIRSCENE data and other sources to help identify which operation generated the noise complaint. The FAA retains radar data for 3 days before providing it to the airport's AIRSCENE noise monitoring system.

The aircraft operator is then notified of the complaint and made aware of the airport's noise abatement program. Callers who specifically request to be contacted are called back.

Since FAA operations data is not released until the third week of the following month, the monthly

summary report is posted online at www.paineairport.com the fourth week of the following month.

Caller Identification Codes are listed in the first column of the complaint table. You should be able to identify yourself by the first 3 letters of your last name and the date and time you called in. If you are having trouble identifying your new code, please call the airport office and we will look you up.

First time callers will receive a one-time hard copy mailing of this monthly noise summary. After the initial mailing, future reports will be posted online at the websites listed on the front of this report. The aircraft operations listed on this page (and next) are presumed to have originated or completed their flights at Paine Field.

Caller Code	Date/Time	Operation	Runway	Flight ID	Aircraft Type	Comments	Community
MCG002	9/1/2012 18:29	N/A	34L	N/A	N/A	Vintage Aircraft Weekend noise	NW4
FIS001	9/3/2012 11:23	ARR	34L	UNKNOWN	UNKN	Loud	SE4
REE010	9/3/2012 14:54	ARR	34L	BOE178	787	General complaint	OTH
FIS001	9/3/2012 20:41	Transiting	N/A	QXE580	Q400	Low	SE4
GRE010	9/4/2012 11:28	N/A	N/A	N/A	N/A	General complaint of air traffic .	NW3
ANE001	9/4/2012 15:20	N/A	N/A	N/A	N/A	General complaint commercial prop.	NW1
SMU001	9/6/2012 12:10	Transiting	34L	BOE38T	T38		NW4
WIL021	9/6/2012 12:31	DEP	UNK	N313LC	SR22	Low	OTH
FIS001	9/6/2012 20:39	ARR	34L	KFS915	DC91	Low	SE4
WIL021	9/6/2012 22:14	DEP	16R	KFS915	DC91	Low	OTH
EDW003	9/7/2012 18:30	ARR	16R	BOE146	777-300		SW2
OLS004	9/8/2012 11:30	DEP	UNK	UNKNOWN	UNKN	Low	SE1
KUL001	9/9/2012 5:00	ARR	16R	GTI4352	LCF		NE1
WIL021	9/9/2012 13:23	DEP	16R	GTI4512	LCF	Low	OTH
WOO014	9/10/2012 11:03	N/A	N/A	N/A	N/A	General complaint noise and routes	OTH
JAK003	9/10/2012 13:26	Transiting	N/A	UNKNOWN	UNKN	Loud	NE4
WIL021	9/10/2012 23:36	ARR	34L	SWA8506	737	Loud	OTH
FIS001	9/10/2012 23:37						SE4
FIS001	9/11/2012 0:14	UKN	UKN	UKN	UKN	Loud	SE4
WIL021	9/11/2012 16:42	ARR	34L	UNKNOWN	UNKN	Loud	OTH
LIP004	9/11/2012 22:20	DEP	UNK	DEEPC05	P3		NW2

Caller Code	Date/Time	Operation	Runway	Flight ID	Aircraft Type	Comments	Community
WIL021	9/11/2012 23:39	ARR	34L	DAL9935	757-300	Low and loud	OTH
FIS001	9/11/2012 23:45						SE4
WIL021	9/12/2012 12:10	DEP	34L	UNKNOWN	UNKN	Low	OTH
WIL021	9/12/2012 16:03	ARR	34L	GTI4351	LCF	Loud	OTH
FIS001	9/12/2012 20:22	DEP	16R	GTI4532	LCF	Low	SE4
WIL021	9/13/2012 15:29	ARR	34L	GTI4352	LCF	Loud	OTH
ANE001	9/13/2012 15:35						NW1
FIS001	9/13/2012 18:36	ARR	34L	N886DC	Falcon 900	Loud	SE4
THO010	9/14/2012 15:36	ARR	34L	BOE579	747-800		SE1
KOL002	9/15/2012 12:50	DEP	UKN	UNKNOWN	UNKN		NW4
WIL021	9/16/2012 11:37	DEP	16R	GTI4532	LCF	Loud	OTH
FIS001	9/16/2012 12:07	ARR	34L	BOE263	787	Loud	SE4
FIS001	9/16/2012 12:45	ARR	34L	BOE119	787	Loud	SE4
FIS001	9/16/2012 12:53	ARR	34L	N448AS	Falcon 2000	Loud	SE4
FIS001	9/16/2012 13:42	ARR	34L	BOE264	787	Loud	SE4
FRA003	9/16/2012 14:34	DEP	34L	BOE135	787-8		OTH
PIC002	9/16/2012 14:39	ARR	34L	BOE601	747-8		OTH
FIS001	9/18/2012 11:05	ARR	16L	UA394	777	Loud	SE4
FIS001	9/18/2012 11:20	DEP	16L	BOE288	787	Low	SE4
FIS001	9/18/2012 11:37	DEP	16L	BOE288	787		SE4
FRA003	9/18/2012 12:54	T/G	16L	BOE837	777	Intrusive	OTH
WIL021	9/18/2012 13:47	DEP	16R	GTI4512	LCF	Loud	OTH
SMU001	9/19/2012 14:18	ARR	34L	BOE264	787-8	Low	NW4
SMU001	9/19/2012 14:23						NW4
BAR010	9/19/2012 22:35	DEP	34L	SWA8500	737-800		NW1
FRA003	9/21/2012 15:08	ARR	16R	BOE579	747-800		OTH
KIL003	9/21/2012 23:52	DEP	34L	GTI4532	LCF		NE1
FIS001	9/22/2012 9:03	DEP	16R	BOE159	777-3	Loud	SE4
FIS001	9/22/2012 12:09	DEP	16R	N926ET	C206	Loud	SE4
FIS001	9/22/2012 14:00	DEP	16R	N88972	B25	Frequency of flights loud	SE4
MEN004	9/22/2012 14:08						SE1
FRA003	9/22/2012 15:10	ARR	16R	BOE579	747		OTH
FIS001	9/23/2012 8:51	DEP	16R	N46MG	PA46	Loud	SE4
FIS001	9/23/2012 9:08	DEP	16R	BOE005	767-300	Loud	SE4
FIS001	9/23/2012 12:46	ARR	34L	SWA8700	767-300	Loud	SE4
MOR005	9/24/2012 4:00	N/A	N/A	UKN	UKN		NW1
DAR001	9/24/2012 13:38	DEP	16R	DAL615	767	Loud and low	NW4
CHA004	9/24/2012 13:40						NW4
AMA001	9/24/2012 13:40						UKN
FIS001	9/24/2012 21:19	ARR	34L	DAL9932	767-400	Loud	SE4
WIL021	9/24/2012 22:28	ARR	34L	GTI4352	LCF	Loud and low	OTH
FAR007	9/24/2012 22:30						NW3
BAD003	9/24/2012 22:33						SE4
FIS001	9/24/2012 22:34						SE4
FIS001	9/24/2012 22:40						SE4

Caller Code	Date/Time	Operation	Runway	Flight ID	Aircraft Type	Comments	Community
MOR005	9/24/2012 23:50	DEP	34L	SWA8505	737		NW1
AMA001	9/25/2012 3:52	DEP	34L	GTI4512	LCF		UKN
LAB003	9/25/2012 4:00						NW1
FIS001	9/25/2012 10:13	DEP	16R	N930HB	737	Loud	SE4
FIS001	9/25/2012 10:16						SE4
HAN004	9/25/2012 12:01	DEP	34L	N28037	Bellanca	Another jet at 0300 woke me up	NE2
FIS001	9/25/2012 12:33	ARR	34L	GTI4351	LCF	Loud	SE4
WIL021	9/25/2012 12:46	ARR	34L	BOE579	747-800	Loud	OTH
FIS001	9/25/2012 12:50						SE4
SMI015	9/25/2012 14:53	Transiting	34L	UNKNOWN	UNKN		SE4
MCC001	9/25/2012 16:00	ARR	34L	UNKNOWN	UNKN	Low and loud	NW2
WIL021	9/25/2012 16:10	DEP	UNK	JZA96	DH8C		OTH
MEL004	9/25/2012 20:10	DEP	16R	GTI4533	LCF	Loud	NW4
FIS001	9/25/2012 20:23						SE4
WIL021	9/25/2012 22:00						OTH
FAR007	9/25/2012 22:23						NW3
WIL021	9/25/2012 23:00	ARR	34L	DAL9932	757-300	Loud	OTH
FIS001	9/25/2012 23:06						SE4
WIL021	9/25/2012 23:15	ARR	34L	SWA8505	737	Loud	OTH
FRA003	9/26/2012 15:01	DEP	16R	BOE135	787		OTH
HOW009	9/26/2012 15:50	ARR	34L	GTI4356	LCF	Low and loud	OTH
WIL021	9/26/2012 15:53						OTH
DOY003	9/26/2012 15:55						OTH
FIS001	9/26/2012 15:57						SE4
FIS001	9/26/2012 15:57						SE4
WIL021	9/26/2012 16:13	ARR	34L	BOE135	787		OTH
JOH016	9/27/2012 3:45	UKN	UKN	UKN	UKN		NW4
FIS001	9/27/2012 13:10	ARR	34L	BOE463	787	Loud	SE4
WIL021	9/27/2012 13:13						OTH
FIS001	9/27/2012 13:16						SE4
FIS001	9/27/2012 14:22	T/G	16L	8AP	PA24	Loud	SE4
HAN004	9/28/2012 3:40	DEP	34L	GTI4512	LCF	Loud	NE2
STE019	9/28/2012 3:50						NW4
MAC002	9/28/2012 3:50						NW1
LAB003	9/28/2012 3:51						NW1
LAF001	9/28/2012 4:00						OTH
ALE001	9/28/2012 4:00						OTH
SMU001	9/28/2012 9:57	DEP	16R	Cougar 34	FA18	Loud	NW4
HAL012	9/28/2012 18:22	ARR	16R	88972	B25	Loud	NW4
SCO005	9/29/2012 12:39	DEP	34L	88972	B25		NW4
GRI008	9/29/2012 12:53	ARR	34L	88972	B25		NW3
FAR007	9/29/2012 13:19	Transiting	N/A	Airlift	EC135		NW3
SCO005	9/29/2012 16:11	O	N/A	UNKNOWN	UNKN	1614 and 1617 as well	NW4
FIS001	9/29/2012 16:45	ARR	16R	GTI4366	LCF	Loud	SE4
STE019	9/30/2012 6:51	DEP	UNK	N425CA	AEST	Also at 0655	NW4
WIL021	9/30/2012 12:30	ARR	34L	BOE263	787	Loud	OTH
FIS001	9/30/2012 12:31						SE4
WIL021	9/30/2012 13:30	Transiting	N/A	UNKNOWN	UNKN	Loud	OTH
WIL021	9/30/2012 13:48	Transiting	N/A	DAL232	A330	Loud	OTH
WIL021	9/30/2012 14:33	Transiting	N/A	269SF	Heli	Loud	OTH