

MONTHLY OPERATIONS & NOISE SUMMARY

PAINE FIELD AIRPORT

AUGUST 2012

ONLINE AT WWW.PAINEFIELD.COM

NOISE COMMENT FORM: [HTTP://WWW.PAINEFIELD.COM/NOISE/NOISEFORM.HTML](http://WWW.PAINEFIELD.COM/NOISE/NOISEFORM.HTML)

NOISE SUMMARY REPORTS: [HTTP://WWW.PAINEFIELD.COM/NOISE/NOISESUMMARY.HTML](http://WWW.PAINEFIELD.COM/NOISE/NOISESUMMARY.HTML)

PAINE FIELD HAPPENINGS: [HTTP://WWW.PAINEFIELD.COM/HAPPENINGS/HAPPENINGS.HTML](http://WWW.PAINEFIELD.COM/HAPPENINGS/HAPPENINGS.HTML)

Noise Brief:

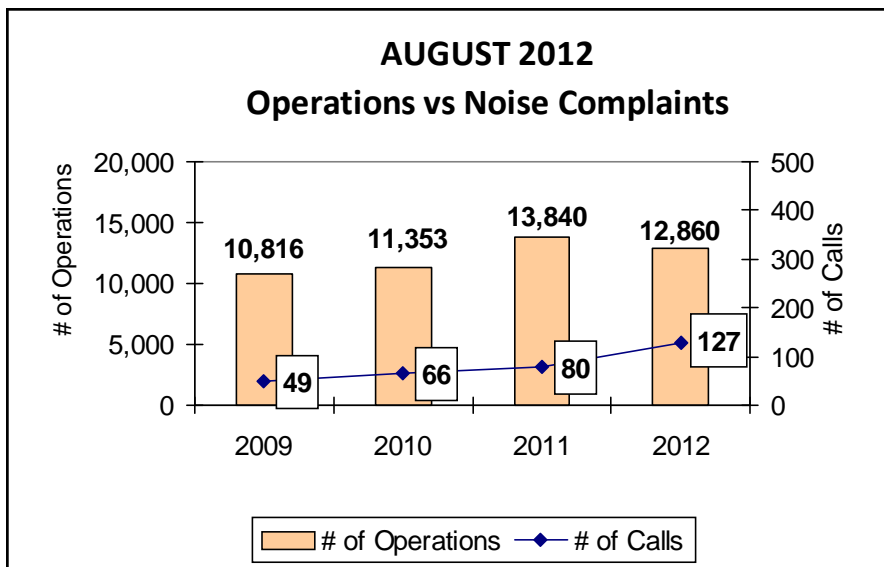
During August 2012, the airport office received 127 noise related calls and emails from individuals in the surrounding communities. There was one call regarding an engine run.

Complaints:

Many factors contribute to the amount of complaints received each month by how many people. Complaint totals are rarely consistent due to factors ranging from one unusual flight event that generates multiple complaints from a large group of people, an overcast day which blocks in sound, or perhaps a new homeowner

that didn't notice the flight paths before the purchase of the property.

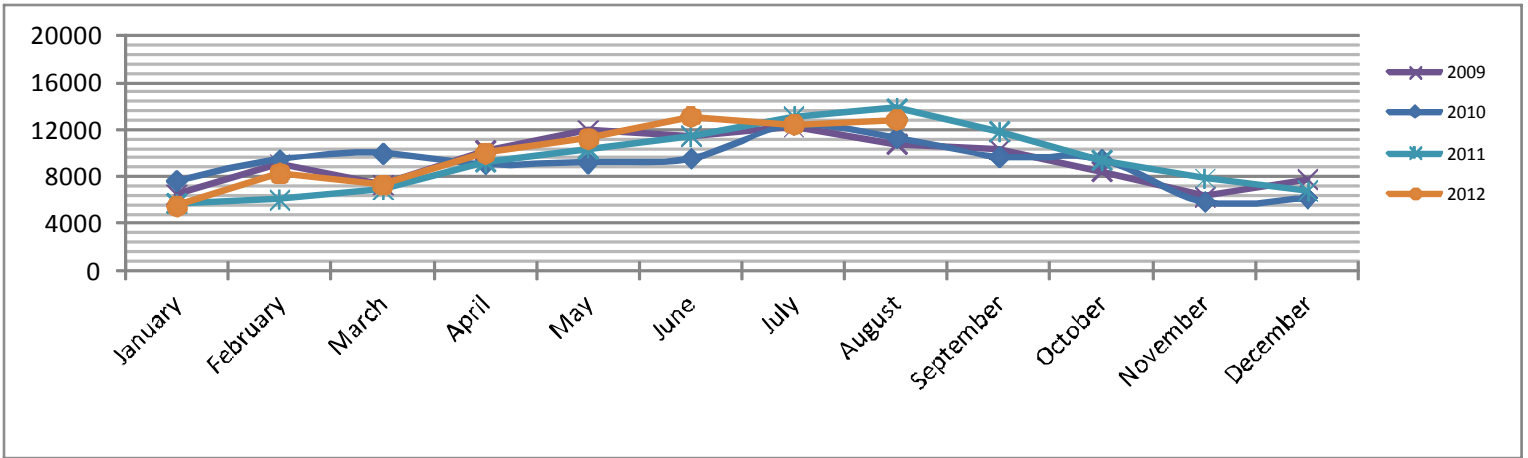
Five F-18 aircraft from California were based at Paine Field for one day of operations. They arrived on Friday evening the 10th, flew three missions on Saturday and departed on Sunday the 12th. The aircraft had originally been planning on operating from Boeing Field, but had to relocate on short notice due to runway repairs there. There were 62 complaints concerning these operations. From staff and observations, the F-18 pilots flew normal profiles and followed standard procedures in their operations around the airfield.



For further information, please call Airport Operations at 425-388-5125

PAINE FIELD AIRPORT • 3220 100TH ST SW • EVERETT, WA 98204
NOISE HOTLINE: 425-353-2110 x1

Monthly Operations Levels 2009—2012

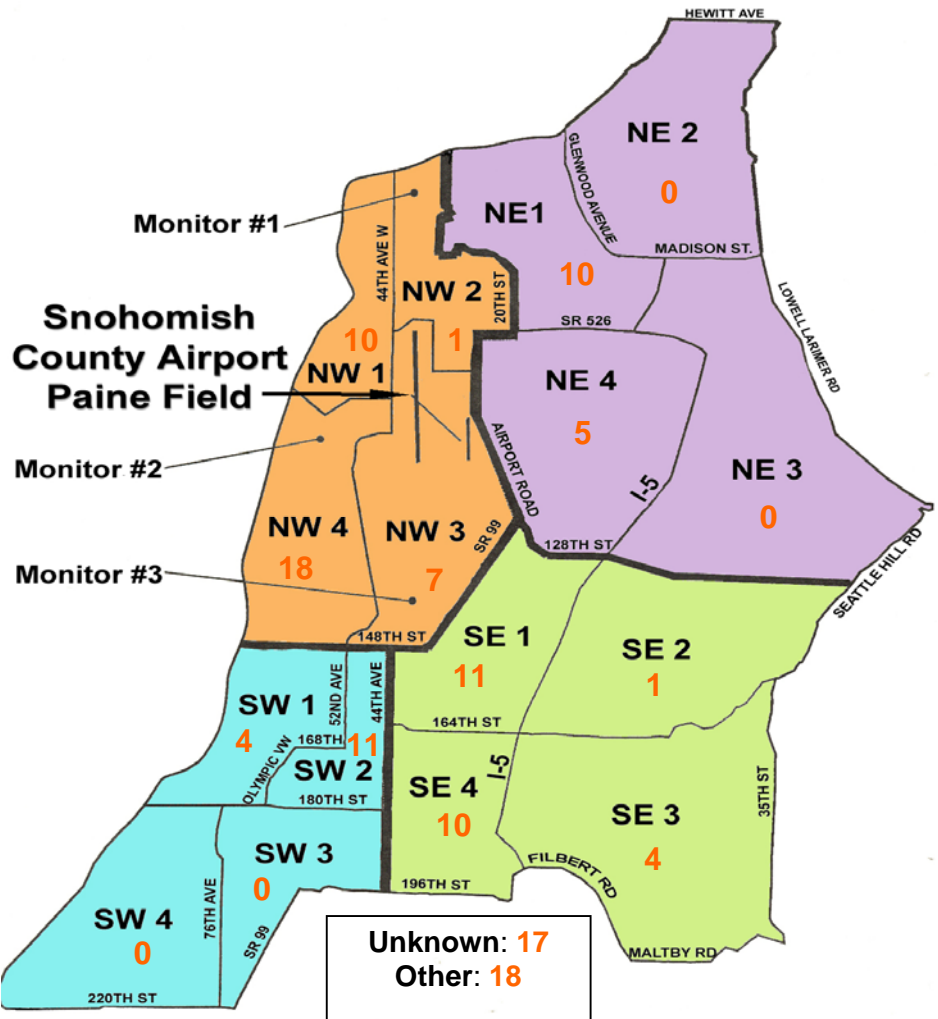


During August 2012, the FAA Paine Field Air Traffic Control Tower recorded 12,860 flight operations. This is a 7.1% decrease in operations from August 2011, which had 13,840 operations.

The four-year average number of flight operations for the month of August is 12,217. Total operations for August 2012 is 5.3% above the four-year average.

Paine Field Community Quadrants

The graphic to the right depicts Paine Field's 16 noise quadrants. The red numbers within each quadrant represent how many calls were made from that quadrant in the month of August. "Unknown" represents complaints where the caller's quadrant was not identified. "Other" represents complaints from outside the four major quadrants.



Caller Complaints

Noise complaints are received via telephone hotline or through the airport web page noise complaint form .

Upon receipt, complaints are investigated. Airport staff uses the AIRSCENE data and other sources to help identify which operation generated the noise complaint. The FAA retains radar data for 3 days before providing it to the airport's AIRSCENE noise monitoring system.

The aircraft operator is then notified of the complaint and made aware of the airport's noise abatement program. Callers who specifically request to be contacted are called back.

Since FAA operations data is not released until the third week of the following month, the monthly

summary report is posted online at www.paineairport.com the fourth week of the following month.

Caller Identification Codes are listed in the first column of the complaint table. You should be able to identify yourself by the first 3 letters of your last name and the date and time you called in. If you are having trouble identifying your new code, please call the airport office and we will look you up.

First time callers will receive a one-time hard copy mailing of this monthly noise summary. After the initial mailing, future reports will be posted online at the websites listed on the front of this report. The aircraft operations listed on this page (and next) are presumed to have originated or completed their flights at Paine Field.

Caller Code	Date/Time	Operation	Runway	Flight ID	Aircraft Type	Comments	Community
WIL018	8/1/2012 11:05	ARR	34L	N932CE	DC9	and loud	OTH
PIC002	8/1/2012 19:05	ARR	34L	SWA8505	737	Loud unusual for area	OTH
JAK003	8/6/2012 10:22	n/a	n/a	n/a	n/a	general complaint	NE4
JAK003	8/6/2012 11:31	n/a	n/a	n/a	n/a	general complaint	NE4
EDW003	8/8/2012 16:07	ARR	34L	194PM	PA 46	Inbound loud	SW2
JAK003	8/8/2012 17:00	n/a	n/a	n/a	n/a	General complain all day occurrence	NE4
WIL020	8/9/2012 4:00	DEP	34L	GTI4516	LCF	Early am flights loud	NE4
LAB003	8/9/2012 4:05						NW1
San008	8/10/2012 12:55	ARR	34L	140DA	C525A	Loud	NW4
REY001	8/10/2012 12:58						NW4
FIS001	8/10/2012 13:53	ARR	34L	N777EH	H25B	and low	SE4
EDW003	8/10/2012 14:12	ARR	34L	KNITE43,4 5	FA-18	Inbound.	SW2
TIN001	8/10/2012 15:42	ARR	34L	KNITE41	FA-18	Loud military	NW4
CLA006	8/10/2012 15:59	ARR	34L	KNITE43	FA-18	loud military	NW4
WAR007	8/10/2012 16:58	ARR	34L	KNITE41,4 2	FA-18	loud low	UKN

Caller Code	Date/Time	Operation	Runway	Flight ID	Aircraft Type	Comments	Community
ROL001	8/10/2012 20:00	ARR	34L	KNITE43	FA-18	Low and loud	NW4
KAT001	8/10/2012 20:00					Loud	NW3
OIO001	8/10/2012 20:24	ARR	34L	KNITE45	FA-18	Loud military aircraft	UKN
WAL011							NW1
STE018							UKN
SAN008							NW4
CAR010							SW2
CHA001							NW1
BRO005							NW1
STE004							NW4
NAN001							NW4
MAR016							UKN
BRO010							NW1
Bot001							UKN
MCC009							NW4
BOT001							UKN
JOH018							NW4
LAS002	8/10/2012 20:42	ARR	34L	KNITE46	FA-18	100' high.	UKN
BON004							UKN
OIO001							UKN
BOD002							NW3
WAR007							UKN
NIE002	8/11/2012 9:39	ARR	34L	KNITE41	FA-18	Rattled the clock on my wall.	SE3
GRO002							SW1
GRO002							SW1
NIE001							SE3
OIO001	8/11/2012 11:09	ARR	34L	KNITE41	FA-18	Loud and Low	UKN
MCB003	8/11/2012 11:20	ARR	34L	KNITE43	FA-18	Loud military planes	NW1
SCH017	8/11/2012 11:42	ARR	34L	KNITE45	FA-18	Loud and scary.	SE1
KUL001	8/11/2012 13:05	DEP	UNK	KNITE41	FA-18	Loud military aircraft	NE1
KUL001				KNITE43			NE1
KUL001				KNITE45			NE1
KUL001	8/11/2012 13:55	ARR	34L	KNITE41	FA-18	More warning before these things. Too loud.	NE1
DAR002							NW4
ROB001							NW1
CAR010							SW2
WAL014							NW3
DRO003							UKN
ROB001							NW1
RON001							NW4
KUL001	8/11/2012 15:38	DEP	34L	KNITE41	FA-18	Excessive noise.	NE1
KUL001							NE1
CHA010							UKN
KUL001							NE1
ASL001							NW4

Caller Code	Date/Time	Operation	Runway	Flight ID	Aircraft Type	Comments	Community
LEH001	8/11/2012 16:45	ARR	34L	KNITE44	FA-18	Loud military jets.	SW1
CRO001	8/11/2012 16:55	DEP	34L	KNITE41,4 2	FA-18	Glasses on counter rattling. Too loud.	NW1
DEA005							UKN
PHI001							SW1
FIS001	8/11/2012 17:04	ARR	34L	KNITE41,4 2	FA-18	Excessive noise.	SE4
FIS001							SE4
HEA004							NW4
FIS001	8/11/2012 17:43	ARR	34L	KNITE45	FA-18	Low and loud.	SE4
ROL001							NW4
PAT006	8/11/2012 18:34	ARR	34L	1763W	BE36	Loud	UKN
WAL014	8/11/2012 20:36	T/G	34L	121RA	UNKN	Loud excessive.	NW3
KUL001	8/12/2012 9:32	DEP	34L	KNITE41	FA-18	Excessive noise.	NE1
BEY004							UKN
AMA001							UKN
LOG003							SE2
WRI002	8/12/2012 11:35	DEP	34L	1394S	C 182	Loud	NW2
EDW003	8/14/2012 15:12	T/G	34L	BOE461	787		SW2
EDW003	8/14/2012 16:35	ARR	34L	BOE202	777-300		SW2
SMI014	8/16/2012 10:28	ARR	34L	GTI4356	LCF	General complaint	SE4
EDW003	8/16/2012 12:10	ARR	34L	BOE940	777-300		SW2
FOT001	8/18/2012 3:50	DEP	16R	GTI1452	LCF	Early morning flight	NW3
EST001	8/18/2012 7:00	ARR	16R	N300AA	LJ45		NE1
GRE009	8/18/2012 15:33	T/G	34L	BOE456	737-800		SE3
EST001	8/20/2012 1:20	DEP	34L	SWA8505	737		NE1
WIL018	8/20/2012 12:00	ARR	UNK	CHH495	A332	and loud	OTH
WIL018	8/20/2012 16:53	ARR	34L	BOE058	787	and low	OTH
WIL020	8/21/2012 1:30	n/a	n/a	n/a	n/a	General complaint LCF early morning flights.	NE4
FIS001	8/21/2012 9:10	ARR	34R	UN- KNOWN	UNKN	and loud	SE4
EDW003	8/22/2012 20:05	ARR	34L	BOE058	787		SW2
KRU004	8/23/2012 7:20	DEP	UNK	N502JJ	C414	and noisy	NE1
WIL018	8/23/2012 10:13	ARR	UNK	AMF8044	SW4	Loud	OTH
EDW003	8/23/2012 12:30	ARR	34L	BOE058	787		SW2
EDW003	8/23/2012 16:06	ARR	34L	BOE058	787		SW2
WIL018	8/23/2012 16:24	DEP	34L	UN- KNOWN	UNKN	Loud	OTH
WIL018	8/23/2012 20:42	ARR	34L	UN- KNOWN	UNKN	and loud	OTH

Caller Code	Date/Time	Operation	Runway	Flight ID	Aircraft Type	Comments	Community
ADA005	8/24/2012 9:46	DEP	34L	BOE240	777-300		OTH
FRA003	8/24/2012 14:18	ARR	34L	BOE202	777-300		OTH
CRO001	8/24/2012 14:30	ARR	34L	BOE202	777-300	and loud	NW1
WIL018	8/24/2012 18:03	ARR	UNK	N5428M	BE24	and loud	OTH
BRI002	8/25/2012 12:40	n/a	n/a	n/a	n/a	Going on for hours vintage planes loud.	NW4
WIL018	8/29/2012 20:30	ARR	34L	GTI4352	LCF	Loud	OTH
JOH018							SW3
IRV001							OTH
FIS001							SE4
WIL018	8/29/2012 20:52	ARR	34L	DAL9932	MD88	Painfully loud.	OTH
FIS001							SE4
DUG002	8/30/2012 4:00	DEP	16R	GTI4512	LCF	Low and loud. Excessive noise.	SE1
ECH001							SE1
MEN003							SE1
HAL011							SE1
WOH001							SE1
AZU001							SE1
WOO013							OTH
COO006							SE1
CHE005							SE1
DAY001							SE1
STE001							NW4
HOL009							SE1
RAP001							NW3
AND014							NW3
MUL003							OTH
EDW003	SW2						
WIL018	8/30/2012 13:20	ARR	34L	N580HW	CV580	Loud and low	OTH
SMU001	8/30/2012 13:59	ARR	34L	UN- KNOWN	UNKN	Low and loud	NW4
WIL018	8/31/2012 9:20	ARR	34L	BOE284	737-800	Low and loud	OTH
FIS001	8/31/2012 16:50	ARR	34L	BOEOHB	BBJ	Low and loud	SE4
FIS001	8/31/2012 17:07	ARR	34L	GTI4151	LCF	Loud	SE4