

MONTHLY OPERATIONS & NOISE SUMMARY

PAINE FIELD AIRPORT

JULY 2012

ONLINE AT WWW.PAINEFIELD.COM

NOISE COMMENT FORM: [HTTP://WWW.PAINEFIELD.COM/NOISE/NOISEFORM.HTML](http://WWW.PAINEFIELD.COM/NOISE/NOISEFORM.HTML)

NOISE SUMMARY REPORTS: [HTTP://WWW.PAINEFIELD.COM/NOISE/NOISESUMMARY.HTML](http://WWW.PAINEFIELD.COM/NOISE/NOISESUMMARY.HTML)

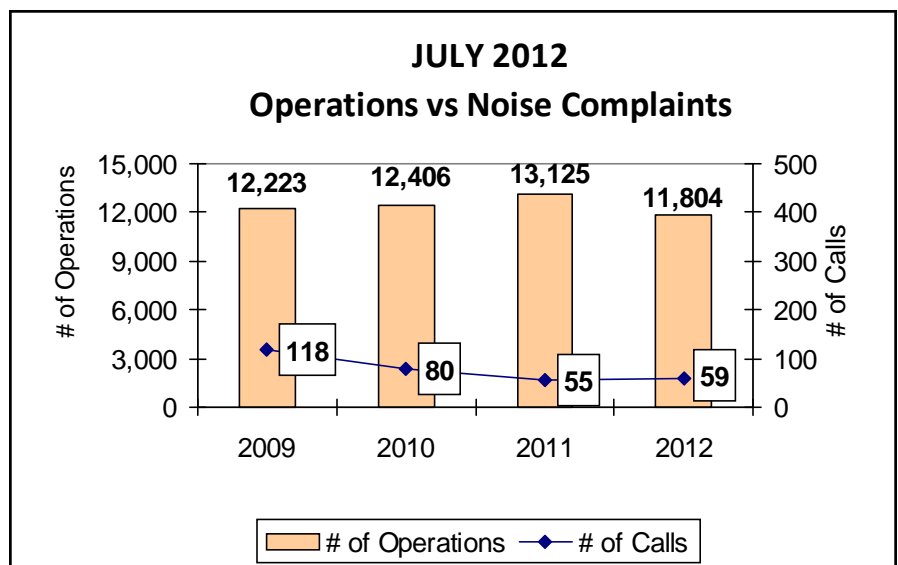
PAINE FIELD HAPPENINGS: [HTTP://WWW.PAINEFIELD.COM/HAPPENINGS/HAPPENINGS.HTML](http://WWW.PAINEFIELD.COM/HAPPENINGS/HAPPENINGS.HTML)

Noise Brief:

During July 2012, the airport office received 59 noise related calls and emails from individuals in the surrounding communities. None of the calls were regarding engine runs.

Complaints:

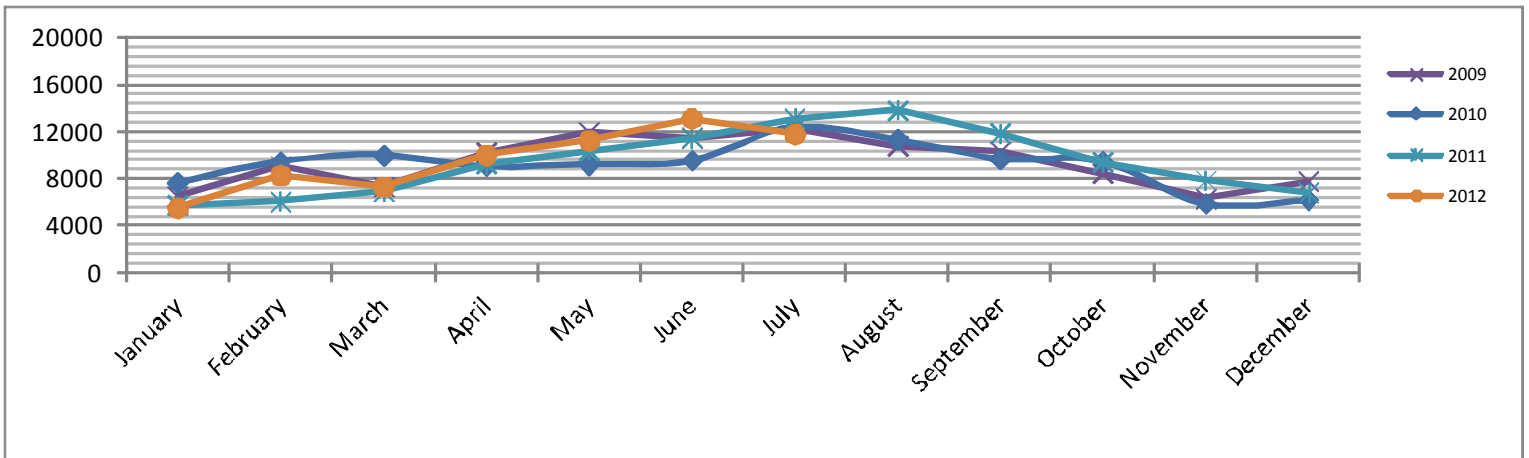
Many factors contribute to the amount of complaints received each month by how many people. Complaint totals are rarely consistent due to factors ranging from one unusual flight event that generates multiple complaints from a large group of people, an overcast day which blocks in sound, or perhaps a new homeowner that didn't notice the flight paths before the purchase of the property.



For further information, please call Airport Operations at 425-388-5125

PAINE FIELD AIRPORT • 3220 100TH ST SW • EVERETT, WA 98204
NOISE HOTLINE: 425-353-2110 x1

Monthly Operations Levels 2009—2012

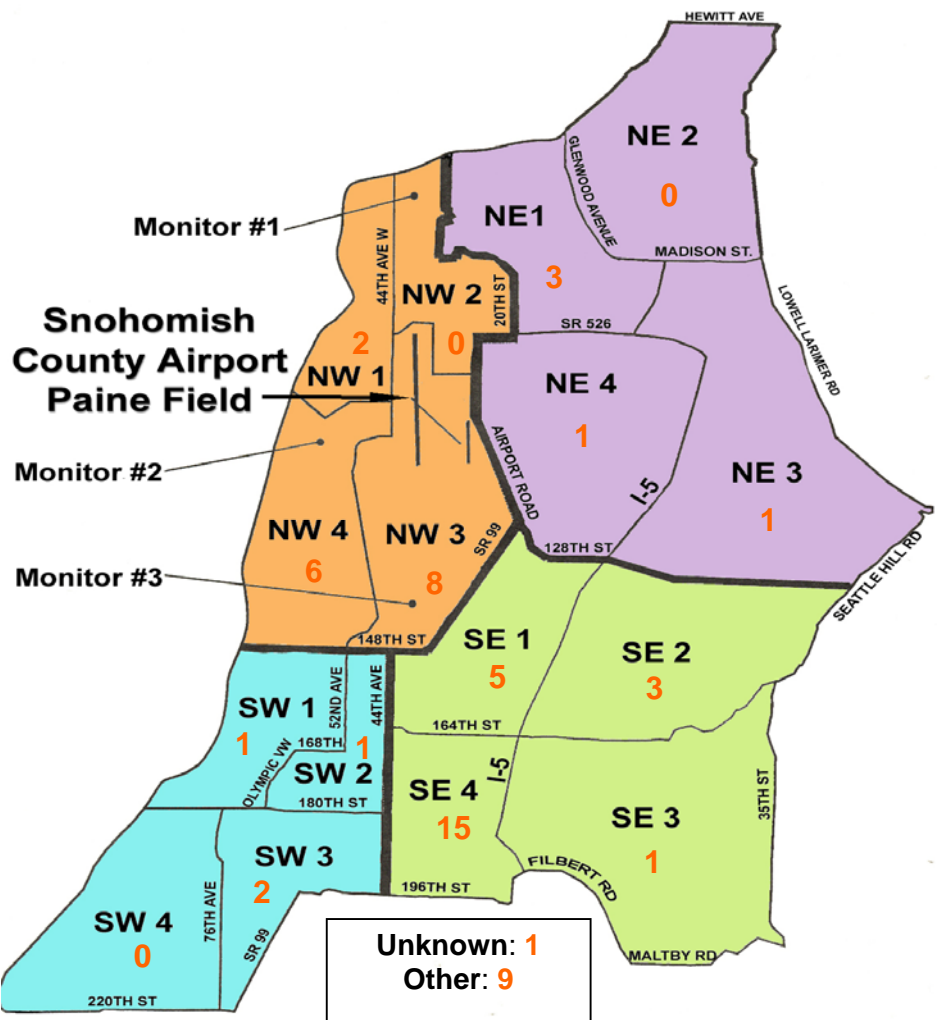


During July 2012, the FAA Paine Field Air Traffic Control Tower recorded 11,804 flight operations. This is a 10.1% decrease in operations from July 2011, which had 13,125 operations.

The four-year average number of flight operations for the month of July is 12,390. Total operations for July 2012 is 4.7% below the four-year average.

Paine Field Community Quadrants

The graphic to the right depicts Paine Field's 16 noise quadrants. The red numbers within each quadrant represent how many calls were made from that quadrant in the month of July. "Unknown" represents complaints where the caller's quadrant was not identified. "Other" represents complaints from outside the four major quadrants.



Caller Complaints

Noise complaints are received via telephone hotline or through the airport web page noise complaint form .

Upon receipt, complaints are investigated. Airport staff uses the AIRSCENE data and other sources to help identify which operation generated the noise complaint. The FAA retains radar data for 3 days before providing it to the airport's AIRSCENE noise monitoring system.

The aircraft operator is then notified of the complaint and made aware of the airport's noise abatement program. Callers who specifically request to be contacted are called back.

Since FAA operations data is not released until the third week of the following month, the monthly

summary report is posted online at www.painefield.com the fourth week of the following month.

Caller Identification Codes are listed in the first column of the complaint table. You should be able to identify yourself by the first 3 letters of your last name and the date and time you called in. If you are having trouble identifying your new code, please call the airport office and we will look you up.

First time callers will receive a one-time hard copy mailing of this monthly noise summary. After the initial mailing, future reports will be posted online at the websites listed on the front of this report. The aircraft operations listed on this page (and next) are presumed to have originated or completed their flights at Paine Field.

Caller Code	Date/Time	Operation	Runway	Flight ID	Aircraft Type	Comments	Community
CHA004	7/1/2012 12:53	Transition	N/A	N/A	UNKN	Unable to track	NW4
DUN001	7/2/2012 3:50	DEP	34L	9030	LCF	Dreamlifter departure at 03:50am again.	NW3
RAP001	7/2/2012 4:10						NW3
FIS001	7/2/2012 23:21	ARR	34L	SW8501	737	Excessive noise	SE4
FIS001	7/3/2012 4:10	DEP	16R	GTI4532	LCF	Flying too low	SE4
FIS001	7/3/2012 11:57	ARR	34L	BOE020	737-800	Excessive noise.	SE4
FIS001	7/3/2012 13:25	DEP	16R	SWA8503	737-800	Excessive noise.	SE4
DIL001	7/7/2012 23:00	Transition	N/A	ALFT6	EC35	After 23:00hrs Loud and Low	OTH
DIL001	7/8/2012 23:00	ARR	34R	1383U	C-172		OTH
FIS001	7/9/2012 17:37	ARR	34L	GTI4151	LCF	Flying too low	SE4
FIS001	7/9/2012 18:23	ARR	34L	SWA8703	737	Excessive noise	SE4
WIL014	7/10/2012 17:15	UNKN	UNKN	UNKN	UNKN	Unable to track outside area	OTH
REY001	7/11/2012 11:52	ARR	34L	N11364	R22	Loud and low	NW4
NIE001	7/11/2012 14:45	ARR	34L	580HW	Convair	Loud and low	SE3
EDW003	7/13/2012 12:05	N/A	N/A	N/A	N/A	Unable to track.	SW2
RAP001	7/14/2012 1:40	DEP	16R	GTI4531	LCF	Loud and Low	NW3
WOH001	7/14/2012 1:40						SE1
WAL011	7/14/2012 1:43						NW1
FIS001	7/14/2012 10:29	ARR	16R	ASA9	737-800	Excessive noise.	SE4
RAP001	7/14/2012 14:00	DEP	16R	GTI4516	LCF	LCF loud over Lynnwood	NW3
WIL018	7/14/2012 14:00						OTH
GAR003	7/16/2012 4:30	DEP	34L	GTI4531	LCF	Too low loud and frequent.	UKN
WAR006	7/17/2012 2:30	DEP	34L	123S	Skylane	Loud and early	NE1
ARM002	7/17/2012 12:21	T/G	16R	PO5	P3	Low loud 4 engine.	NW4
JUK001	7/17/2012 17:05	N/A	N/A	N/A	N/A	General complaint	SE1
JAK003	7/18/2012 19:06	N/A	N/A	N/A	N/A	General complaint	NE4

Caller Code	Date/Time	Operation	Runway	Flight ID	Aircraft Type	Comments	Community
MAV001	7/19/2012 3:58	DEP	16R	GTI4512	LCF	Loud	SE2
CAP002	7/19/2012 6:00	N/A	16R	N/A	N/A	General complaint	NE3
LOC002	7/20/2012 0:30	N/A	16R	N/A	N/A	General complaint	SW3
TAY001	7/20/2012 3:58	N/A	N/A	UNKN	UNKN	Unable to track	NW4
CRO002	7/21/2012 4:44	DEP	16R	GTI4536	LCF	Low and Loud	SW1
RAP001	7/21/2012 4:45						NW3
WOH001	7/21/2012 4:45						SE1
COL002	7/21/2012 4:45						NW4
BUD001	7/22/2012 1:35	N/A	N/A	N/A	UNKN	Unable to track	NW3
FIS001	7/22/2012 19:10	ARR	34L	TRS9335	737	Excessive noise	SE4
FIS001	7/23/2012 15:55	ARR	34L	GTI4352	LCF	Loud and Low	SE4
DEN004	7/24/2012 3:30	DEP	16R	GTI4512	LCF	Early morning flight loud and low	OTH
SHA009	7/24/2012 3:35						OTH
WOH001	7/24/2012 3:35						SE1
EDM001	7/24/2012 3:35						NW3
GRU001	7/24/2012 12:42	ARR	34R	FLC58	LJ60	Learjet went over home very low	OTH
REY001	7/24/2012 12:52	T/G	16R	N/A	N/A	General complaint	NW4
WIL001	7/25/2012 12:06	ARR	34L	914ST	Amphib	Low and Loud	OTH
EDW003	7/25/2012 13:20	ARR	34L	BOE158	777	Inbound	SW2
LOC002	7/27/2012 4:45	DEP	16R	GTI4536	LCF	Loud and Low	SW3
WOH001	7/27/2012 4:45						SE1
KIL003	7/29/2012 0:09	DEP	34L	SWA8506	737-300	Low	NE1
FIS001	7/29/2012 12:01	DEP	16L	GTI4532	LCF	Low and Loud	SE4
FIS001	7/29/2012 13:27	DEP	16L	863CP		Low and Loud	SE4
FIS001	7/29/2012 13:43	DEP	16L	GTI4512	LCF	Low and Loud	SE4
FIS001	7/31/2012 7:48	DEP	34L	CFS695	C208	Low and Loud	SE4
WIL018	7/31/2012 16:02	ARR	34L	N739LU	C172	Low and Loud	OTH
FIS001	7/31/2012 16:03	ARR	34L	N739LU	C172	Low and Loud	SE4
PLI001	7/31/2012 18:46	DEP	34L	BOE461	787	Very loud 2 planes	NW1
KIL003	7/31/2012 18:48	DEP	34L	BOE461	787	Loud and Low	NE1
BUD001	7/31/2012 20:22	ARR	34L	BOE461	787	Loud and Low	NW3
EDW003	7/31/2012 20:22						SW2
FIS001	7/31/2012 20:42						SE4