

MONTHLY OPERATIONS & NOISE SUMMARY

PAINE FIELD AIRPORT

JUNE 2012

ONLINE AT WWW.PAINEFIELD.COM

NOISE COMMENT FORM: [HTTP://WWW.PAINEFIELD.COM/NOISE/NOISEFORM.HTML](http://WWW.PAINEFIELD.COM/NOISE/NOISEFORM.HTML)

NOISE SUMMARY REPORTS: [HTTP://WWW.PAINEFIELD.COM/NOISE/NOISESUMMARY.HTML](http://WWW.PAINEFIELD.COM/NOISE/NOISESUMMARY.HTML)

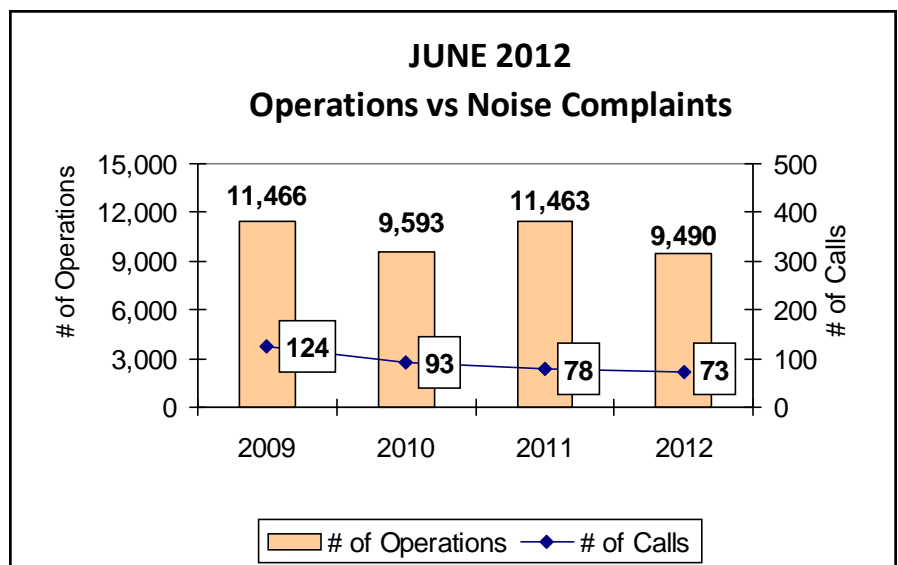
PAINE FIELD HAPPENINGS: [HTTP://WWW.PAINEFIELD.COM/HAPPENINGS/HAPPENINGS.HTML](http://WWW.PAINEFIELD.COM/HAPPENINGS/HAPPENINGS.HTML)

Noise Brief:

During June 2012, the airport office received 73 noise related calls and emails from individuals in the surrounding communities. None of the calls were regarding engine runs.

Complaints:

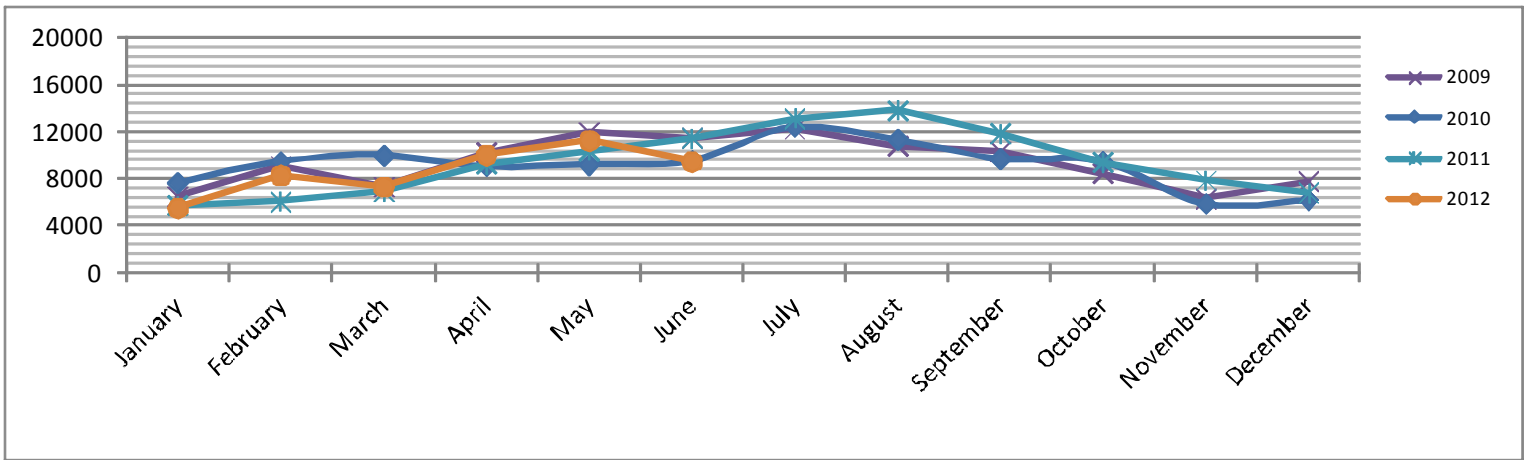
Many factors contribute to the amount of complaints received each month by how many people. Complaint totals are rarely consistent due to factors ranging from one unusual flight event that generates multiple complaints from a large group of people, an overcast day which blocks in sound, or perhaps a new homeowner that didn't notice the flight paths before the purchase of the property.



For further information, please call Airport Operations at 425-388-5125

PAINE FIELD AIRPORT • 3220 100TH ST SW • EVERETT, WA 98204
NOISE HOTLINE: 425-353-2110 x1

Monthly Operations Levels 2009—2012

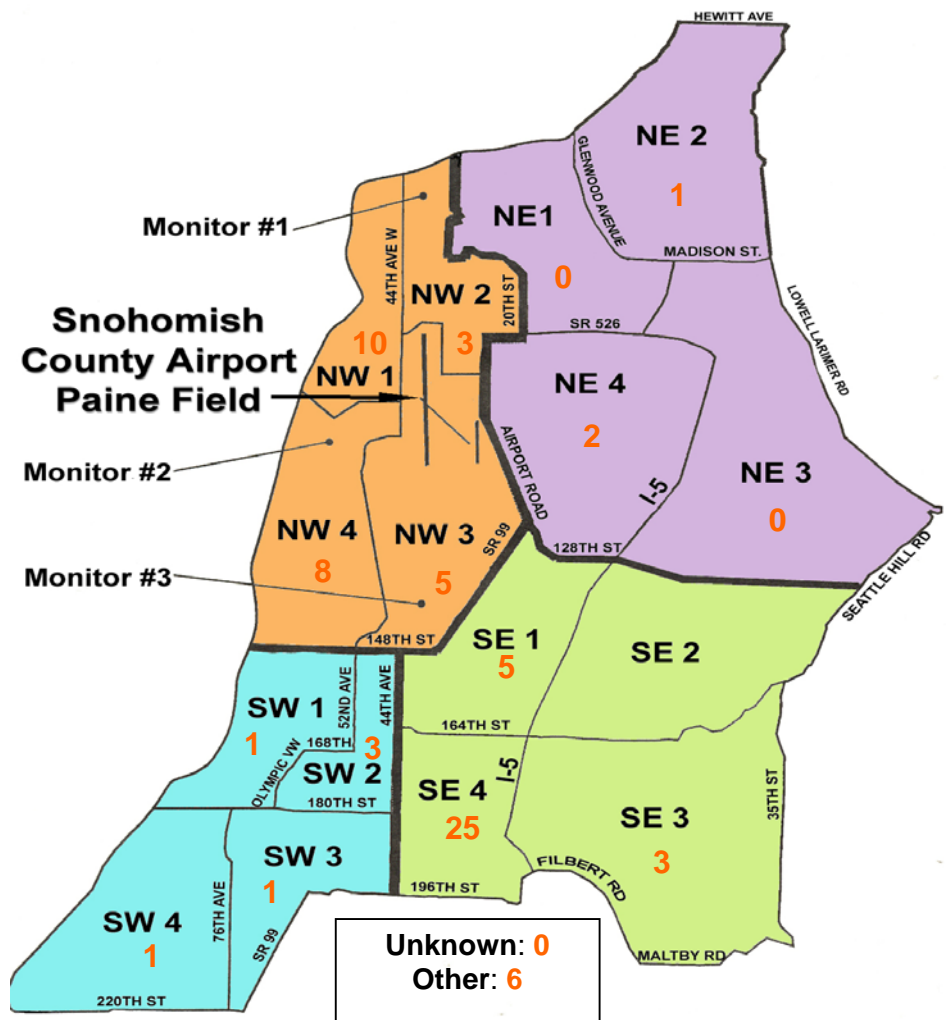


During June 2012, the FAA Paine Field Air Traffic Control Tower recorded 9,490 flight operations. This is a 17.2% decrease in operations from June 2011, which had 11,463 operations.

The four-year average number of flight operations for the month of June is 10,503. Total operations for June 2012 is 9.7% below the four-year average.

Paine Field Community Quadrants

The graphic to the right depicts Paine Field's 16 noise quadrants. The red numbers within each quadrant represent how many calls were made from that quadrant in the month of June. "Unknown" represents complaints where the caller's quadrant was not identified. "Other" represents complaints from outside the four major quadrants.



Caller Complaints

Noise complaints are received via telephone hotline or through the airport web page noise complaint form .

Upon receipt, complaints are investigated. Airport staff uses the AIRSCENE data and other sources to help identify which operation generated the noise complaint. The FAA retains radar data for 3 days before providing it to the airport's AIRSCENE noise monitoring system.

The aircraft operator is then notified of the complaint and made aware of the airport's noise abatement program. Callers who specifically request to be contacted are called back.

Since FAA operations data is not released until the third week of the following month, the monthly

summary report is posted online at www.paineairport.com the fourth week of the following month.

Caller Identification Codes are listed in the first column of the complaint table. You should be able to identify yourself by the first 3 letters of your last name and the date and time you called in. If you are having trouble identifying your new code, please call the airport office and we will look you up.

First time callers will receive a one-time hard copy mailing of this monthly noise summary. After the initial mailing, future reports will be posted online at the websites listed on the front of this report. The aircraft operations listed on this page (and next) are presumed to have originated or completed their flights at Paine Field.

Caller Code	Date/Time	Operation	Runway	Flight ID	Aircraft Type	Comments	Community
FIS001	6/4/2012 17:26	DEP	16R	BJS337	CL-60	Excessive noise	SE4
FIS001	6/4/2012 17:31	ARR	34L	GTI4151	LCF	Low and loud	SE4
WIL018	6/4/2012 21:47	ARR	34L	GTI4356	LCF	Low and loud	OTH
EDM001	6/5/2012 3:20	DEP	16R	GTI4512	LCF	Early morning flight	NW3
RAP001							NW3
STE016							NW4
RIC011							SE1
SWE003							SE1
LAS001							NW4
NIE001	6/5/2012 7:12	DEP	16R	GTI4532	LCF		SE3
FIS001	6/6/2012 13:31	DEP	16R	BOE16X	T-33	Excessive noise	SE4
DAY001	6/8/2012 11:31	ARR	UNK	BOE611	737-800	General complaint late/early flights	SE1
Men003							SE1
KON002	6/8/2012 22:47	DEP	34L	SWA8508	737		NW1
FIS001	6/9/2012 8:28	DEP	16R	DAL9931	757-300	Loud and low	SE4
SWA003	6/9/2012 11:00	DEP	16R	N214TW	SR22	Loud and low	NW1
KEN001	6/9/2012 11:45	ARR	16R	FLT OF 4	T-6		NW4
OGD002	6/9/2012 12:00	ARR	16L	N119GG	P28A	Loud and low	NW4
SCH016							NW2
FIS001	6/9/2012 12:43	DEP	16R	BOE023	747-8	Loud and low	SE4
MCC005	6/9/2012 14:24	DEP	34L	FLT OF 7	T-6/B-25	Low and Loud	NW1
Mor012							OTH
MCC005							NW1
DAV008	6/9/2012 14:48	DEP	34L	FLT OF 4	T-6		NW1
TOO001							NW4
QUI001	6/9/2012 15:55	ARR	34L	08R	P-3		NW4
WIL018	6/9/2012 17:39	ARR	34L	BOE023	747-8	Loud and low	OTH

Caller Code	Date/Time	Operation	Runway	Flight ID	Aircraft Type	Comments	Community
PET009	6/9/2012 18:18	DEP	34L	BOE001	767	Loud and low	SW4
FIS001	6/10/2012 10:44	ARR	16L	66SP	C-150		SE4
NIE001							SE3
FIS001	6/10/2012 11:17	ARR	16R	SWA1895	737	Loud and low	SE4
FIS001	6/10/2012 12:27	DEP	16R	BOE001	767	Loud and low	SE4
FIS001	6/10/2012 22:44	ARR	34L	TRS9332	737-800	Loud	SE4
FIS001	6/11/2012 12:35	DEP	16R	GTI4542	LCF	Loud and low	SE4
AND006	6/12/2012 17:25	DEP	16R	GTI4512	LCF	General complaint low flying aircraft	SW3
McC008							SE1
CHR003	6/15/2012 17:50	ARR	34L	UNKNOWN	UNKNOWN		NE4
SCO004	6/16/2012 12:50	Transiting	n/a	BOE17	737-800		NW4
GIB002	6/16/2012 12:55	Transiting	n/a	UNKNOWN	UNKNOWN	Low flying planes in formation WWII	NW1
SCH016							NW2
RAP001	6/17/2012 7:30	DEP	16R	GTI4512	LCF	Loud	NW3
FIS001							SE4
FIS001	6/17/2012 11:25	Transiting	n/a	Lifeguard 6	EC-135	Low and loud	SE4
NIE001	6/19/2012 7:27	ARR	34L	N74RF	C-425		SE3
FIS001	6/19/2012 15:17	DEP	34L	BOE507	787	Low and loud	SE4
GRU001	6/19/2012 15:47	Over flight	n/a	BOE729	737-800	Repetitive overhead flights	OTH
FIS001	6/19/2012 15:53	Over flight	n/a	BOE729	737-800	Low and loud	SE4
FIS001	6/19/2012 18:28	DEP	16R	GTI4532	LCF	Low and loud	SE4
ALS001	6/20/2012 14:35	ARR	34L	BOE261	777-300		SW1
EDW003							SW2
CAR010	6/20/2012 15:01	ARR	34R	UNKNOWN	UNKNOWN		SW2
DES002	6/20/2012 15:16	DEP	34L	BOE230	777-300	Low and loud frightening	NW1
FIS001	6/20/2012 20:04	ARR	34L	N222GY	GLF4	Low and loud	SE4
COR001	6/21/2012 22:42	DEP	16R	ANA9397	787	Loud	SE4
FIS001							SE4
HAR001	6/22/2012 10:30	DEP	16R	N9323Z	B-17	Multiple passes same aircraft.	NW2
KIR002							NW1
DES001	6/24/2012 14:55	ARR	34L	BOE198	777-300	Low and loud going NW large jet.	NW1
BUD001							NW3
MCC005	6/25/2012 15:05	DEP	UNK	UNKNOWN	B-17	Historical planes loud	NW1

Caller Code	Date/Time	Operation	Runway	Flight ID	Aircraft Type	Comments	Community
MCC005	6/25/2012 15:05	DEP	UNK	UNKNOWN	B-17	Historical planes loud	NW1
FIS001	6/25/2012 15:40	ARR	34L	GTI4352	LCF	Loud and low	SE4
FIS001	6/25/2012 16:33	ARR	34L	BOE005	787	Loud and low	SE4
COR001	6/25/2012 22:42	ARR				Large jet flying so low it woke me up	SE4
FIS001							SE4
GRU001	6/26/2012 14:15	DEP	16R	BOE523	747-800	Loud and low	OTH
FAL001							OTH
FIS001	6/26/2012 17:09	DEP	16R	PHOTO1	LJ25	Loud low	SE4
FIS001	6/26/2012 20:21	ARR	34L	GTI4346	LCF	Loud and low	SE4
FIS001	6/27/2012 11:21	DEP	34L	BOE230	777-300	Loud low	SE4
GID001	6/27/2012 12:05	ARR	16R	BOE230	777-300	Low thought it would crash	NW3
SMU001							NW4
EDW003	6/27/2012 14:05	ARR	16R	11364	Heli	Low and Loud	SW2
GRA013	6/30/2012 13:44	DEP	34R	UNKNOWN	UNKNOWN	Repetitive plane noise	NE4