

MONTHLY OPERATIONS & NOISE SUMMARY

PAINE FIELD AIRPORT

MAY 2012

ONLINE AT WWW.PAINEFIELD.COM

NOISE COMMENT FORM: [HTTP://WWW.PAINEFIELD.COM/NOISE/NOISEFORM.HTML](http://WWW.PAINEFIELD.COM/NOISE/NOISEFORM.HTML)

NOISE SUMMARY REPORTS: [HTTP://WWW.PAINEFIELD.COM/NOISE/NOISESUMMARY.HTML](http://WWW.PAINEFIELD.COM/NOISE/NOISESUMMARY.HTML)

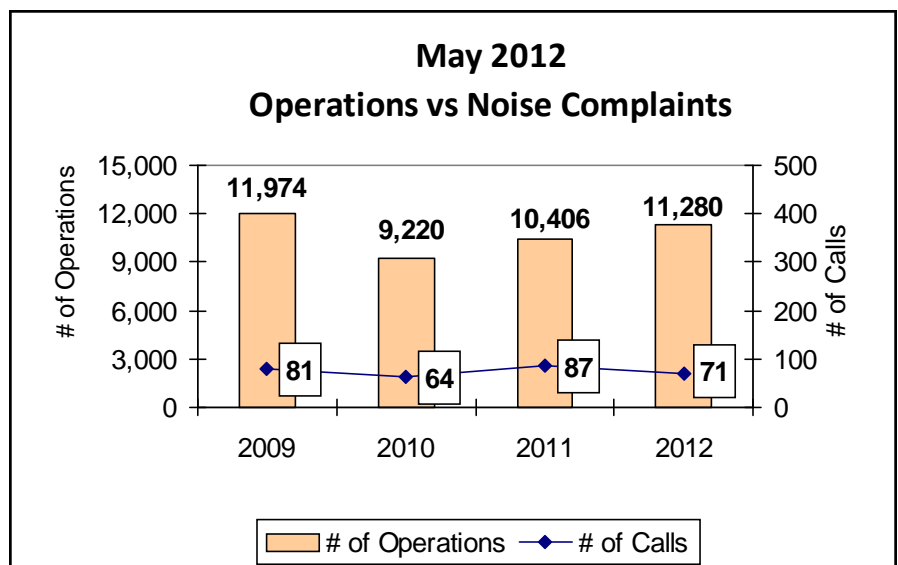
PAINE FIELD HAPPENINGS: [HTTP://WWW.PAINEFIELD.COM/HAPPENINGS/HAPPENINGS.HTML](http://WWW.PAINEFIELD.COM/HAPPENINGS/HAPPENINGS.HTML)

Noise Brief:

During May 2012, the airport office received 71 noise related calls and emails from individuals in the surrounding communities. None of the calls were regarding engine runs.

Complaints:

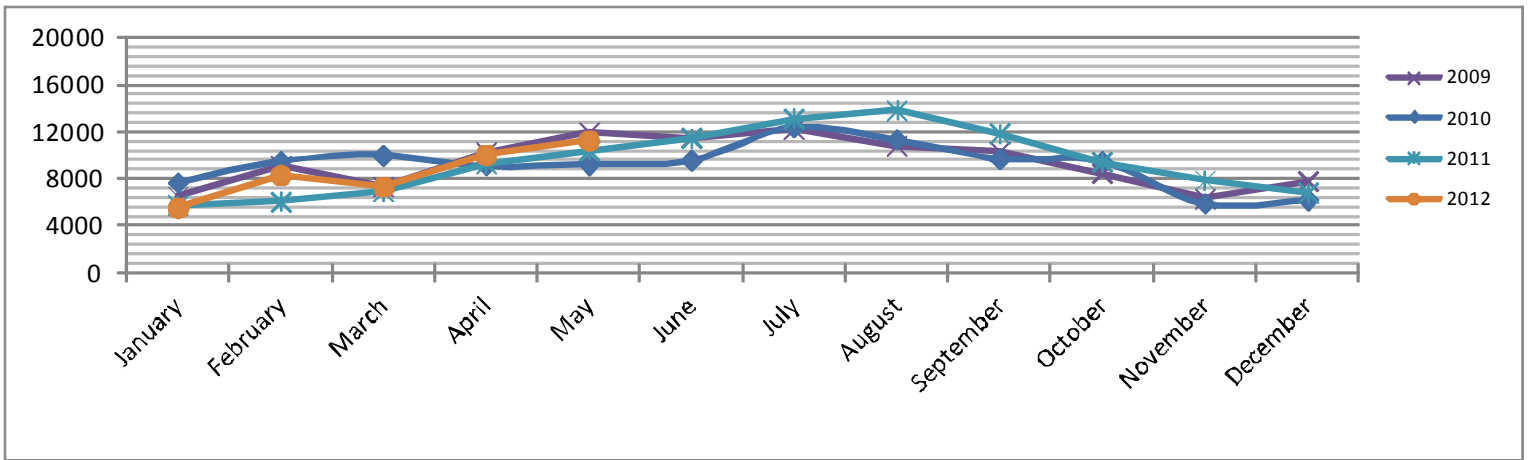
Many factors contribute to the amount of complaints received each month by how many people. Complaint totals are rarely consistent due to factors ranging from one unusual flight event that generates multiple complaints from a large group of people, an overcast day which blocks in sound, or perhaps a new homeowner that didn't notice the flight paths before the purchase of the property.



For further information, please call Airport Operations at 425-388-5125

PAINE FIELD AIRPORT • 3220 100TH ST SW • EVERETT, WA 98204
NOISE HOTLINE: 425-353-2110 x1

Monthly Operations Levels 2009—2012

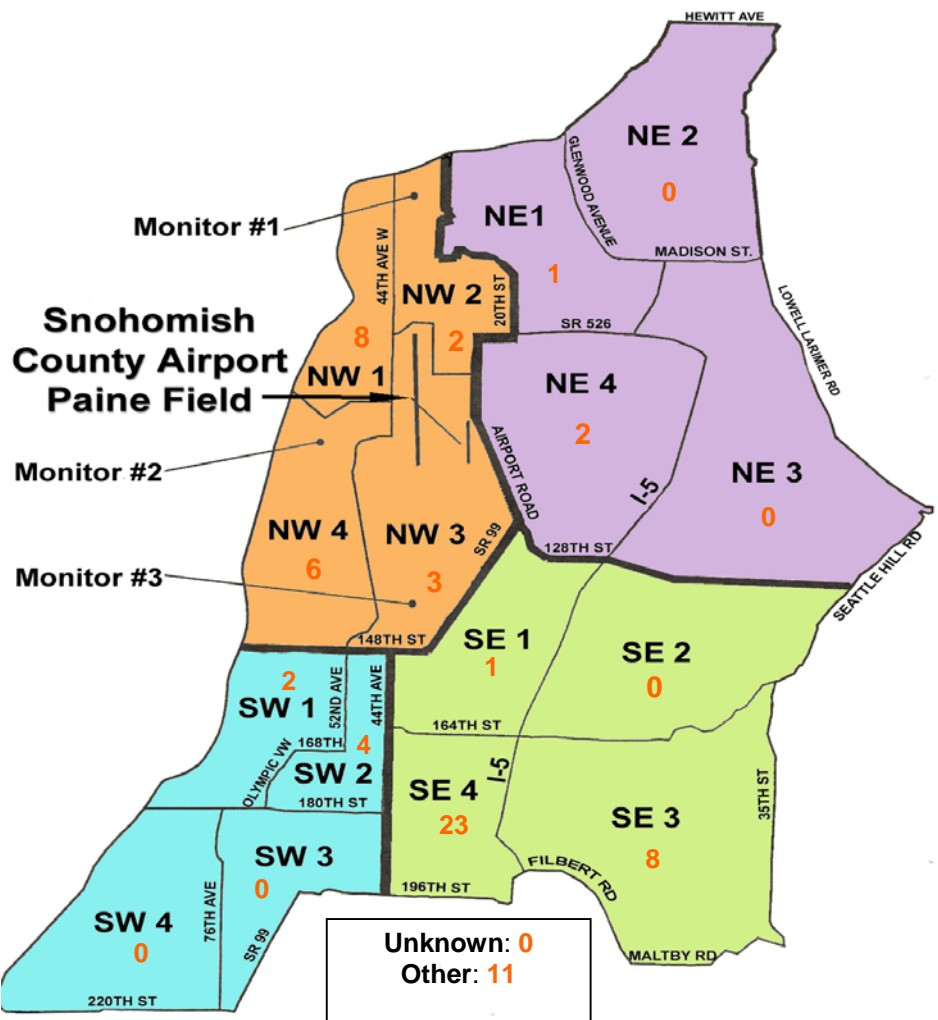


During May 2012, the FAA Paine Field Air Traffic Control Tower recorded 11,280 flight operations. This is an 8.4% increase in operations from May 2011, which had 10,406 operations.

The four-year average number of flight operations for the month of May is 10,720. Total operations for May 2012 is 5.2% above the four-year average.

Paine Field Community Quadrants

The graphic to the right depicts Paine Field's 16 noise quadrants. The red numbers within each quadrant represent how many calls were made from that quadrant in the month of May. "Unknown" represents complaints where the caller's quadrant was not identified. "Other" represents complaints from outside the four major quadrants.



Caller Complaints

Noise complaints are received via telephone hotline or through the airport web page noise complaint form .

Upon receipt, complaints are investigated. Airport staff uses the AIRSCENE data and other sources to help identify which operation generated the noise complaint. The FAA retains radar data for 3 days before providing it to the airport's AIRSCENE noise monitoring system.

The aircraft operator is then notified of the complaint and made aware of the airport's noise abatement program. Callers who specifically request to be contacted are called back.

Since FAA operations data is not released until the third week of the following month, the monthly

summary report is posted online at www.painefield.com the fourth week of the following month.

Caller Identification Codes are listed in the first column of the complaint table. You should be able to identify yourself by the first 3 letters of your last name and the date and time you called in. If you are having trouble identifying your new code, please call the airport office and we will look you up.

First time callers will receive a one-time hard copy mailing of this monthly noise summary. After the initial mailing, future reports will be posted online at the websites listed on the front of this report. The aircraft operations listed on this page (and next) are presumed to have originated or completed their flights at Paine Field.

| Caller Code | Date/Time | Operation | Runway | Flight ID | Aircraft | Comments | Community |
|-------------|----------------|-----------|--------|-----------|------------|-------------------|-----------|
| NIE001 | 5/1/2012 07:22 | DEP | 16R | GTI4532 | 747-LCF | Loud | SE3 |
| FIS001 | 5/2/2012 10:29 | ARR | 16R | BOE195 | 777-300 | Loud and Low | SE4 |
| PER003 | 5/3/2012 01:00 | ARR | 16R | DAL9937 | MD-88 | Loud | OTH |
| SAN007 | 5/3/2012 03:00 | DEP | 34L | SWA8500 | 737-300 | Loud | NW3 |
| BEN004 | 5/4/2012 03:40 | DEP | 16R | GTI4512 | 747-LCF | Low and Loud | NW3 |
| RAP001 | | | | | | | NW3 |
| STE016 | | | | | | | NW4 |
| FIS001 | | | | | | | SE4 |
| SWE006 | | | | | | | SW1 |
| NIE001 | | | | | | | SE3 |
| MCC001 | 5/5/2012 04:35 | DEP | 34L | GTI4512 | 747-LCF | Loud and Low | NW2 |
| EIL001 | 5/5/2012 07:55 | DEP | 34L | N512SE | T-6 | Historic Plane | NW4 |
| FIS001 | 5/6/2012 10:51 | DEP | 34L | BOE523 | 747-8 | | SE4 |
| FIS001 | 5/6/2012 13:18 | ARR | 34L | BOE198 | 747-8 | Low and Loud | SE4 |
| CLI002 | 5/7/2012 09:26 | n/a | n/a | n/a | n/a | General Complaint | NE4 |
| FIS001 | 5/7/2012 09:46 | DEP | 16R | BOE592 | 777-200 | Low and Loud | SE4 |
| FIS001 | 5/7/2012 10:53 | DEP | 16R | BOE523 | 747-8 | Low and Loud | SE4 |
| FIS001 | 5/7/2012 13:42 | DEP | 16R | BOE505 | 747-8 | Low and Loud | SE4 |
| WIL018 | 5/8/2012 09:09 | DEP | 16R | BOE505 | 747-8 | Low and Loud | OTH |
| NIE001 | | | | | | | SE3 |
| FIS001 | 5/8/2012 13:19 | DEP | 16R | GTI4512 | 747-LCF | Low and Loud | SE4 |
| FIS001 | 5/8/2012 16:47 | DEP | 16R | N777EH | Hawker 800 | | SE4 |
| FIS001 | 5/8/2012 16:58 | DEP | 16R | UAE777 | 777-300 | Low and Loud | SE4 |
| FIS001 | 5/8/2012 19:26 | DEP | UNK | BAW48 | 747-400 | | SE4 |

| Caller Code | Date/Time | Operation | Runway | Flight ID | Aircraft Type | Comments | Community |
|-------------|-----------------|------------|--------|-----------|---------------|-------------------------|-----------|
| WIL018 | 5/9/2012 20:03 | ARR | 34L | GTI4451 | 747-400 | Low and Loud | OTH |
| NIE001 | 5/10/2012 6:28 | TRANSITING | n/a | CHPR7 | Heli | | SE3 |
| FIS001 | 5/10/2012 8:55 | ARR | 16R | N143G | G-550 | Loud and Low | SE4 |
| FIS001 | 5/10/2012 9:47 | ARR | 16R | BOE252 | 737-800 | Loud and Low | SE4 |
| TOO001 | 5/11/2012 10:34 | TRANSITING | n/a | N4288E | AC11 | WWII Planes all Weekend | NW4 |
| EDW003 | 5/11/2012 15:11 | DEP | 16R | BOE543 | 737-800 | | SW2 |
| FRA003 | 5/13/2012 13:01 | TRANSITING | n/a | N119GG | PA28 | Loud | OTH |
| WIL018 | 5/13/2012 13:07 | n/a | n/a | n/a | n/a | Loud | OTH |
| FIS001 | 5/13/2012 18:14 | ARR | 34L | SWA8701 | 737-300 | Low and Loud | SE4 |
| MAH001 | 5/14/2012 1:16 | DEP | 16R | SWA8502 | 737-700 | | SW2 |
| MAH001 | 5/14/2012 12:49 | n/a | n/a | n/a | n/a | | SW2 |
| EDW003 | 5/14/2012 14:02 | n/a | n/a | n/a | n/a | | SW2 |
| DIZ001 | 5/14/2012 20:30 | ARR | 34L | GTI4351 | 747-LCF | Loud | SW3 |
| WIL018 | | | | | | | OTH |
| SCO005 | | | | | | | NW4 |
| TUB001 | 5/15/2012 22:35 | DEP | 34L | GTI4536 | 747-LCF | | NE1 |
| WIL018 | 5/16/2012 18:41 | ARR | 34L | BOE952 | 737-800 | Loud | OTH |
| HUG001 | 5/17/2012 3:50 | DEP | 34L | GTI4512 | 747-LCF | Loud and Low | NW1 |
| LAB003 | | | | | | | NW1 |
| MOR005 | | | | | | | NW1 |
| BRE004 | | | | | | | NW1 |
| MCC005 | 5/17/2012 7:27 | ARR | 16R | 20076 | Heli | Loud | NW1 |
| KOE001 | 5/18/2012 12:50 | TRANSITING | 16R | 86F | P-51 | Loud | NW4 |
| SCH015 | 5/19/2012 16:10 | DEP | 34L | N88972 | B-25 | Loud | NW2 |
| MAG002 | 5/19/2012 16:39 | DEP | 34L | N88972 | B-25 | WWII Planes all Weekend | NW4 |
| JAK003 | 5/20/2012 12:51 | DEP | 16L | SMOKEY4 | C-206 | | NE4 |
| WIL018 | 5/20/2012 23:10 | ARR | UNK | SWA1793 | 737 | Low and Loud | OTH |
| FIS001 | 5/21/2012 19:53 | n/a | n/a | n/a | n/a | Low and Loud | SE4 |
| FIS001 | 5/22/2012 8:49 | ARR | UNK | GTI8279 | 767-300 | Low and Loud | SE4 |
| NIE001 | 5/22/2012 11:25 | DEP | 16R | SWA8503 | 737-300 | Low and Loud | SE3 |
| FIS001 | | | | | | | SE4 |
| NIE001 | | | | | | | SE3 |
| FIS001 | 5/23/2012 10:14 | DEP | 16R | BOE523 | 747-8 | Low and Loud | SE4 |
| FIS001 | 5/24/2012 15:49 | Touch and | 34L | SWA8705 | 737-800 | Low and Loud | SE4 |
| MOR005 | 5/25/2012 4:45 | DEP | 34R | GTI4512 | 747-LCF | Early Morning Flight | NW1 |
| ADA004 | | | | | | | OTH |
| FIS001 | 5/25/2012 9:49 | DEP | 16R | GTI4532 | 747-LCF | Low and Loud | SE4 |
| MCC005 | 5/25/2012 14:52 | TRANSITING | n/a | N329JK | Heli | Loud | NW1 |
| WIL018 | 5/26/2012 16:27 | ARR | 34L | NAO903 | 767-300 | Loud | OTH |
| WIL018 | 5/26/2012 16:58 | ARR | 34L | UNKNOWN | UNKN | Low and Loud | OTH |
| MCC005 | 5/26/2012 17:40 | ARR | n/a | N329JK | Heli | Loud | NW1 |
| LAU003 | 5/28/2012 11:00 | ARR | 16R | N42461 | C-182 | Low and Loud | SW1 |
| FIS001 | 5/29/2012 9:54 | DEP | 16R | N124DT | GLF3 | Low Loud | SE4 |
| NIE001 | 5/30/2012 14:10 | DEP | 16R | UAE777 | 777-300 | Loud | SE3 |
| HIK001 | 5/30/2012 20:41 | DEP | 16R | SCORP13 | FA-18 | Military Jet | SE4 |
| MON003 | | | | | | | SE1 |
| AGU001 | | | | | | | SE4 |