

MONTHLY OPERATIONS & NOISE SUMMARY

PAINE FIELD AIRPORT

MARCH 2012

ONLINE AT WWW.PAINEFIELD.COM

NOISE COMMENT FORM: [HTTP://WWW.PAINEFIELD.COM/NOISE/NOISEFORM.HTML](http://WWW.PAINEFIELD.COM/NOISE/NOISEFORM.HTML)

NOISE SUMMARY REPORTS: [HTTP://WWW.PAINEFIELD.COM/NOISE/NOISESUMMARY.HTML](http://WWW.PAINEFIELD.COM/NOISE/NOISESUMMARY.HTML)

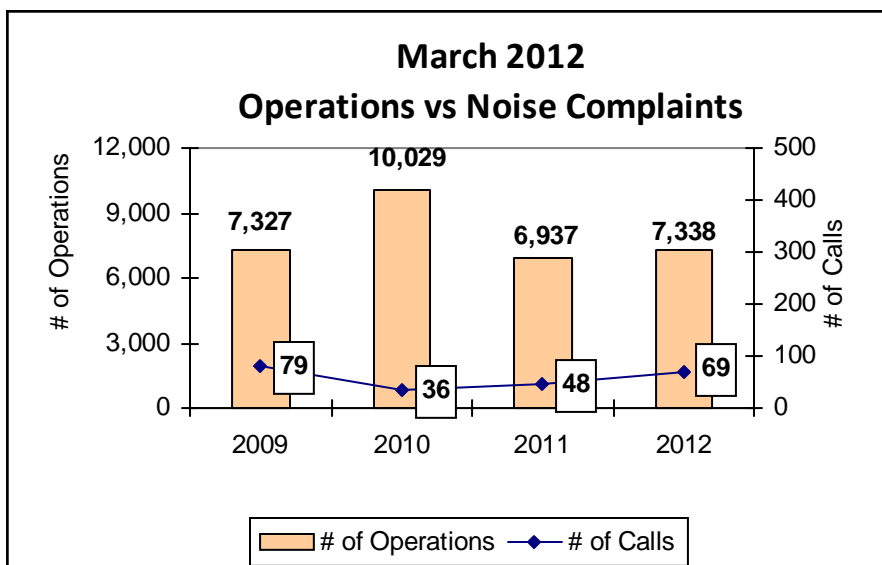
PAINE FIELD HAPPENINGS: [HTTP://WWW.PAINEFIELD.COM/HAPPENINGS/HAPPENINGS.HTML](http://WWW.PAINEFIELD.COM/HAPPENINGS/HAPPENINGS.HTML)

Noise Brief:

During March 2012, the airport office received 69 noise related calls and emails from individuals in the surrounding communities. None of the calls were regarding engine runs.

Complaints:

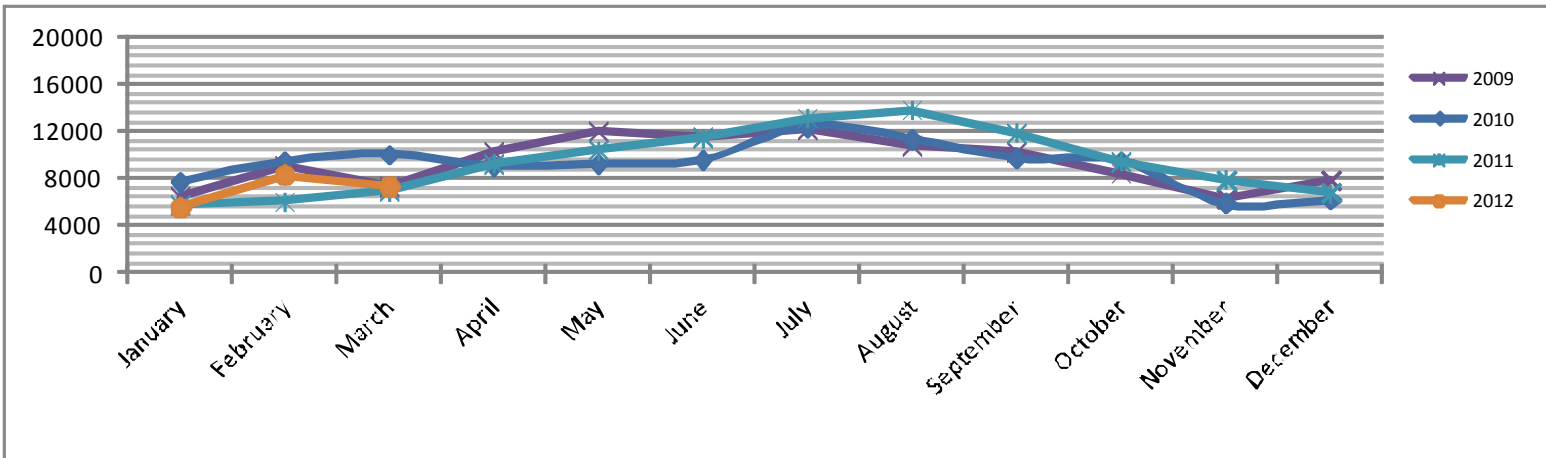
Many factors contribute to the amount of complaints received each month by how many people. Complaint totals are rarely consistent due to factors ranging from one unusual flight event that generates multiple complaints from a large group of people, an overcast day which blocks in sound, or perhaps a new homeowner that didn't notice the flight paths before the purchase of the property.



For further information, please call Airport Operations at 425-388-5125

PAINE FIELD AIRPORT • 3220 100TH ST SW • EVERETT, WA 98204
NOISE HOTLINE: 425-353-2110 x1

Monthly Operations Levels 2009—2012

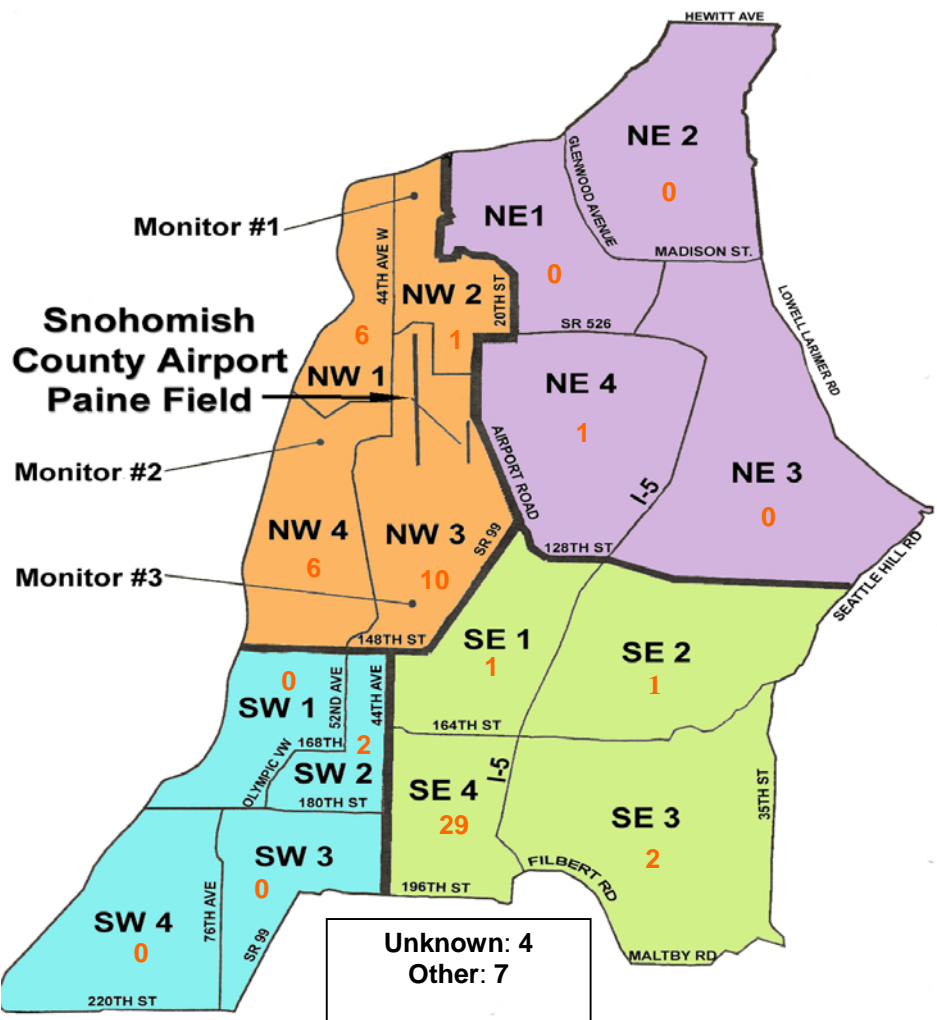


During March 2012, the FAA Paine Field Air Traffic Control Tower recorded 7,338, flight operations. This is a 5.8% increase in operations from March 2011, which had 6,937 operations.

The four-year average number of flight operations for the month of March is 7,908. Total operations for March 2012 is 7.2% below the four-year average.

Paine Field Community Quadrants

The graphic to the right depicts Paine Field's 16 noise quadrants. The red numbers within each quadrant represent how many calls were made from that quadrant in the month of March. "Unknown" represents complaints where the caller's quadrant was not identified. "Other" represents complaints from outside the four major quadrants.



Caller Complaints

Noise complaints are received via telephone hotline or through the airport web page noise complaint form .

Upon receipt, complaints are investigated. Airport staff uses the AIRSCENE data and other sources to help identify which operation generated the noise complaint. The FAA retains radar data for 3 days before providing it to the airport's AIRSCENE noise monitoring system.

The aircraft operator is then notified of the complaint and made aware of the airport's noise abatement program. Callers who specifically request to be contacted are called back.

Since FAA operations data is not released until the

third week of the following month, the monthly summary report is posted online at www.painefield.com the fourth week of the following month.

Caller Identification Codes are listed in the first column of the complaint table. You should be able to identify yourself by the first 3 letters of your last name and the date and time you called in. If you are having trouble identifying your new code, please call the airport office and we will look you up.

First time callers will receive a one-time hard copy mailing of this monthly noise summary. After the initial mailing, future reports will be posted online at the websites listed on the front of this report. The aircraft operations listed on this page (and next) are

Caller Code	Date/Time	Operation	Runway	Flight ID	Aircraft Type	Comment	Community
FIS001	3/1/12 11:12	T&G	16R	BOE 103	737-800	Loud and low	SE4
FIS001	3/1/12 11:20	ARR	16R	BOE 103	737-800	Loud and low	SE4
FIS001	3/1/12 14:43	ARR	34L	BOE 229	777-300	Should have come over Puget Sound and not my house.	SE4
PRA001							OTH
SYR001	3/2/12 04:07	DEP	16R	GTI4512	747-LCF	Loud and low	UNK
DAM002							UNK
ENG003							SE4
RAP001							NW3
STE001							SW2
AND014							NW3
NIE001							SE3
BUR003							NW3
SCO005	3/4/12 17:09	T & G	16R	98434	C-210	Low and loud	NW4
FRA003	3/5/12 15:33	ARR	16R	BOE 059	777-200	Fed Ex plane	OTH
LIP003	3/5/12 21:08	ARR	16R	FENIX 81	F-18	Military plane	NW2
STU004							n/a
GIL003	3/6/12 08:27	DEP	34L	FENIX 81	F-18	Another jet went over at 08:24	NW1
DOW001							SE2
FIS001	3/6/12 12:28	ARR	34L	BOE 177	787-800	Low and loud	SE4
EDW003	3/6/12 13:55	ARR	34L	BOE 193	737-300	Inbound directly over our house	SW2
Pra001	3/7/12 11:20	DEP	16R	BOE 059	777-200	Loud	OTH
Pra001	3/7/12 22:45	ARR	34L	BOE 022	747-800	Loud and low	OTH
QUI001							NW4
Jen005	3/7/12 22:45	ARR	34L	BOE 022	747-800	Loud and low	OTH
QUI001	3/8/12 02:00	n/a	n/a	n/a	n/a	Late	NW4
MOO005	3/8/12 02:42	DEP	34L	GTI4512	747-400	Loud and low	NW1
LAB003							NW1

Caller Code	Date/Time	Operation	Runway	Flight ID	Aircraft Type	Comment	Community
FIS001	3/8/12 07:55	ARR	16R	BOE 229	737-300	Loud and low	SE4
Pra001	3/8/12 13:49	ARR	34L	N208BA	C-208	Loud and low	OTH
FIS001	3/10/12 09:59	DEP	16R	GTI4532	747-LCF	Loud and low	SE4
FIS001	3/10/12 10:31	DEP	16R	DAL 9935	767-300	Loud and low	SE4
NEL004	3/15/12 02:00	n/a	n/a	n/a	n/a		NW4
MIN005	3/15/12 03:58	n/a	n/a	n/a	n/a	Loud and Low	n/a
WAL011							NW1
BUR003							NW3
DUN001	3/15/12 04:02	DEP	16R	GTI4512	747-LCF	Loud and low	NW3
FIS001	3/16/12 09:44	n/a	n/a	n/a	n/a	Loud and low	SE4
FIS001	3/16/12 10:05	DEP	16R	BOE 108	777-200	Loud and low	SE4
FIS001	3/17/12 12:07	ARR	16R	BOE 503	747-800	Loud and low	SE4
FIS001	3/17/12 15:16	DEP	16R	BOE 503	747-800	Loud and low	SE4
Wil018	3/18/12 14:20	n/a	n/a	n/a	n/a	Loud and low	OTH
FIS001	3/19/12 11:33	DEP	16R	BOE 117	777-300	Loud and low	SE4
FIS001	3/19/12 11:43	DEP	16R	N604GM	CL60	Loud and low	SE4
FIS001	3/19/12 11:50	DEP	16R	SWA 8511	737-800	Loud and low	SE4
FIS001	3/22/12 09:34	DEP	16R	BOE 280	767-300	Loud and low	SE4
FIS001	3/22/12 15:40	DEP	16R	JASON91	F18	Loud and low	SE4
FIS001	3/22/12 16:52	ARR	16R	777EH	H-25B	Loud and low	SE4
FIS001	3/23/12 14:42	Overflight	34R	n/a	HELI	Loud and low	SE4
FIS001	3/23/12 16:23	DEP	34R	BOE 648	737	Loud and low	SE4
WAL006	3/24/12 09:18	ARR	34L	N152LT	C-152	Loud	NE4
FIS001	3/25/12 05:24	ARR	34L	N555VR	LJ45	Loud and low	SE4
FIS001	3/26/12 13:29	DEP	16R	GTI4512	747-LCF	Loud and low	SE4
FIS001	3/26/12 16:50	DEP	16R	GTI4532	747-LCF	Loud and low	SE4
You004	3/27/12 03:00	n/a	n/a	n/a	n/a	Loud and low	NW3
WEY001	3/27/12 20:59	T&G	16R	N222GY	GLF-4	Loud	NW1
RAP001	3/28/12 02:10	DEP	16R	GT14516	747-LCF	Loud	NW3
JOH006	3/28/12 03:00	DEP	16R	SWA 8515	737	Loud	SE1
DUN001							NW3
KOR001							NW3
SEG001							SE4
BEN004							NW3
LAS001							NW4
NIE001	3/28/12 03:20	DEP	16R	N4516	MD-80	Loud and low	SE3
FIS001	3/28/12 21:52	ARR	16R	UAL 1706	737-800	Loud and low	SE4
FIS001	3/29/12 00:44	DEP	16R	SWA 8509	737-700	Loud and low	SE4
LAS001	3/29/12 02:12	DEP	16R	SWA 8510	737-300	Loud	NW4
FIS001	3/29/12 09:11	DEP	16R	DAL 9931	MD-88	Loud	SE4
FIS001	3/29/12 23:24	DEP	16R	9429	MD-80	Loud	SE4
BEY001	3/30/12 03:37	n/a	n/a	n/a	n/a	Loud and low early morning flight	NW1