

MONTHLY OPERATIONS & NOISE SUMMARY

PAINE FIELD AIRPORT

NOVEMBER 2011

ONLINE AT WWW.PAINEFIELD.COM

NOISE COMMENT FORM: [HTTP://WWW.PAINEFIELD.COM/NOISE/NOISEFORM.HTML](http://WWW.PAINEFIELD.COM/NOISE/NOISEFORM.HTML)

NOISE SUMMARY REPORTS: [HTTP://WWW.PAINEFIELD.COM/NOISE/NOISESUMMARY.HTML](http://WWW.PAINEFIELD.COM/NOISE/NOISESUMMARY.HTML)

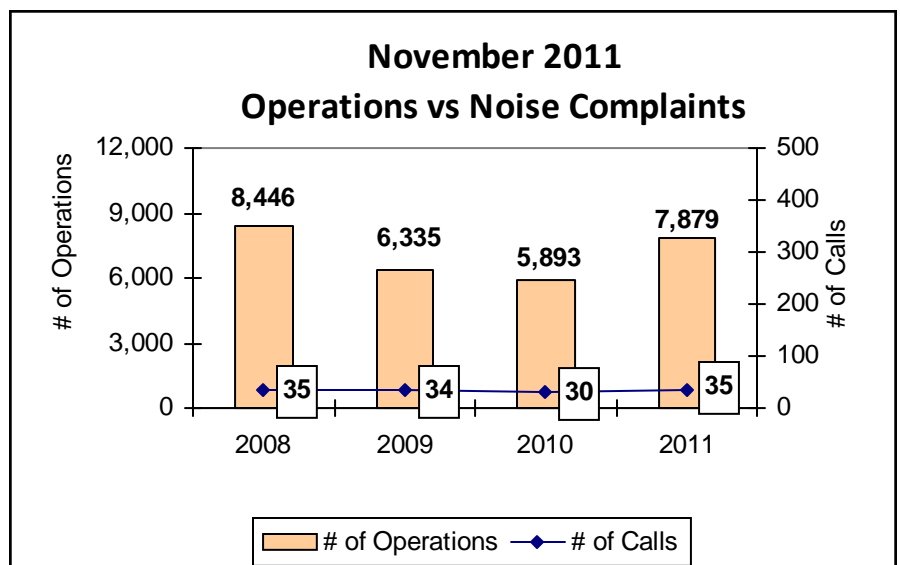
PAINE FIELD HAPPENINGS: [HTTP://WWW.PAINEFIELD.COM/HAPPENINGS/HAPPENINGS.HTML](http://WWW.PAINEFIELD.COM/HAPPENINGS/HAPPENINGS.HTML)

Noise Brief:

During November 2011, the airport office received 35 noise related calls and emails from individuals in the surrounding communities. One of the calls was regarding an engine run.

Complaints:

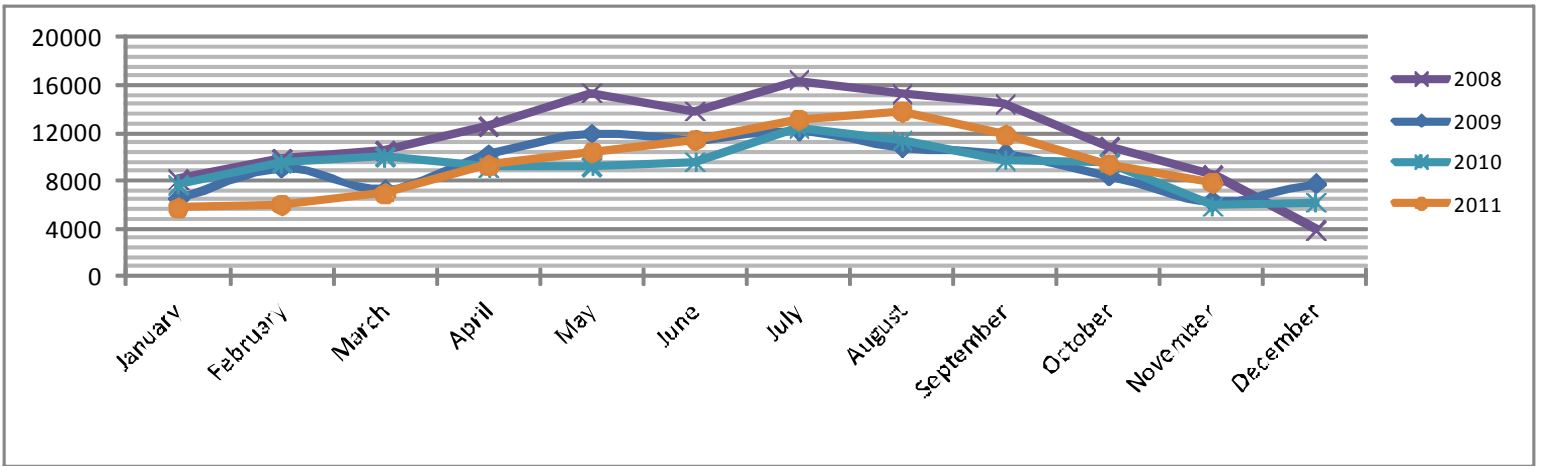
Many factors contribute to the amount of complaints received each month by how many people. Complaint totals are rarely consistent due to factors ranging from one unusual flight event that generates multiple complaints from a large group of people, an overcast day which blocks in sound, or perhaps a new homeowner that didn't notice the flight paths before the purchase of the property.



For further information, please call Airport Operations at 425-388-5125

PAINE FIELD AIRPORT • 3220 100TH ST SW • EVERETT, WA 98204
NOISE HOTLINE: 425-353-2110 x1

Monthly Operations Levels 2008–2011

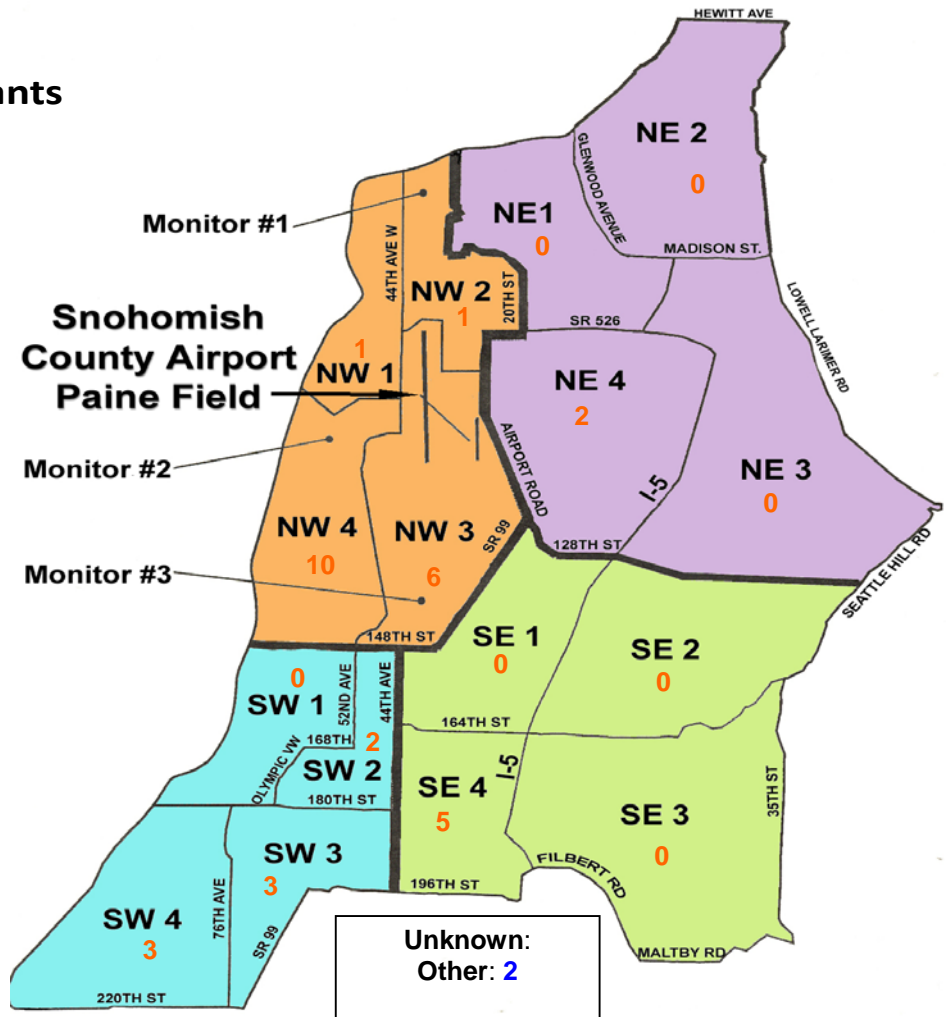


During November 2011, the FAA Paine Field Air Traffic Control Tower recorded 7,879 flight operations. This is a 34% increase in operations from November 2010, which had 5,893 operations.

The four-year average number of flight operations for the month of November is 7,143. Total operations for November 2011 is 10% above the four-year average.

Paine Field Community Quadrants

The graphic to the right depicts Paine Field’s 16 noise quadrants. The red numbers within each quadrant represent how many calls were made from that quadrant in the month of November. “Unknown” represents complaints where the caller’s quadrant was not identified. “Other” represents complaints from outside the four



Caller Complaints

Noise complaints are received via telephone hotline or through the airport web page noise complaint form .

Upon receipt, complaints are investigated. Airport staff uses the AIRSCENE data and other sources to help identify which operation generated the noise complaint. The FAA retains radar data for 3 days before providing it to the airport's AIRSCENE noise monitoring system.

The aircraft operator is then notified of the complaint and made aware of the airport's noise abatement program. Callers who specifically request to be contacted are called back.

Since FAA operations data is not released until the third week of the following month, the monthly

summary report is posted online (see *Online* on page 1) the fourth week of the following month.

Caller Identification Codes are listed in the first column of the complaint table. You should be able to identify yourself by the first 3 letters of your last name and the date and time you called in. If you are having trouble identifying your new code, please call the airport office and we will look you up.

First time callers will receive a one-time hard copy mailing of this monthly noise summary. After the initial mailing, future reports will be posted online at the websites listed on the front of this report. The aircraft operations listed on this page (and next) are presumed to have originated or completed their flights at Paine Field.

Caller Code	Date/ Time	Operation	Runway	Flight ID	Aircraft Type	Caller Comments	Community
WOO010	11/2/2011 10:07	DEP	16R	BOE867	777-300	Noisy	NW4
WOO010	11/4/2011 9:50	n/a	n/a	n/a	n/a	Noisy	NW4
WOO010	11/7/2011 9:16	DEP	16R	GTI4542	747-LCF	Noisy	NW4
FIS001	11/7/2011 10:41	DEP	16R	BOE440	747-8	Loud and low	SE4
SCO005	11/7/2011 18:30	DEP	34L	N5931S	BE35	Noisy	NW4
WOO010	11/8/2011 9:51	DEP	16R	N580HW	Convair580	Noisy	NW4
SAW001	11/8/2011 20:01	Overflight	x	x	x	Could not be traced	SE4
JAK003	11/10/2011 15:30	n/a	n/a	n/a	n/a	Could not be traced	NE4
LYL001	11/11/2011 12:00	n/a	n/a	n/a	n/a	General complaint	NW3
WOO010	11/11/2011 13:24	n/a	n/a	n/a	n/a	Noisy	NW4
WOO010	11/12/2011 12:00	T & G	16R	BOE270	737-800	Noisy	NW4
GIB001							SW4
FIS001	11/14/2011 13:14	ARR	34L	BOE521	747-8	Low, and loud	SE4
JOH018	11/14/2011 14:38	DEP	16R	N550XJ	CL30	Noisy	SW3
EDW003	11/15/2011 8:45	n/a	n/a	n/a	n/a	Outbound	SW2
FIS001	11/15/2011 14:33	DEP	16R	CPA3337	747-8	Loud and low	SE4
WOO010	11/16/2011 9:34	DEP	16R	TWY401	CL60	Noisy	NW4
EDW003							SW2
GIB001	11/16/2011 14:30	DEP	16R	BOE217	777-300	Loud and low	SW4

Caller Complaints

Caller Code	Date/Time	Operation	Runway	Call Sign	Aircraft Type	Comments	Community
BON003	11/16/2011 15:00	ARR	16R	BOE217	777-300	Noise went on for 1.5 hrs. 4 planes doing reverse thrusters.	OTH
WOO010	11/18/2011 12:08	DEP	16R	BOE440	747-8	Noisy	NW4
LIP002	11/19/2011 16:15	n/a	n/a	n/a	n/a	Could not be traced	NW2
POI003	11/19/2011 22:02	n/a	n/a	n/a	n/a	Helicopter	NW4
JES001	11/21/2011 12:58	n/a	n/a	n/a	n/a	Loud, low	SW3
GIB001							SW4
JOH018	11/21/2011 14:30	DEP	16R	N5512E	C-172	Noisy, Low	SW3
RUD002	11/21/2011 15:27	DEP	16R	KAL28D	777-200	Loud and low	
STO002	11/22/2011 2:20	ARR	16R	GTI4451	747-LCF	Loud, Late	NW1
RUD002	11/22/2011 3:00	DEP	16R	GTI4512	747-LCF	Late at night, Loud	NW3
BEN004							NW3
DEA004							OTH
RAP001							NW3
JAK003							11/22/2011 11:24
RAP001	11/23/2011 13:00	DEP	16R	GTI4512	747-LCF	Loud, Low	NW3
FIS001	11/23/2011 15:45	DEP	16R	CPA3337	747-8	and low	SE4