

MONTHLY OPERATIONS & NOISE SUMMARY

PAINE FIELD AIRPORT

SEPTEMBER 2011

ONLINE AT WWW.PAINEFIELD.COM

NOISE COMMENT FORM: [HTTP://WWW.PAINEFIELD.COM/NOISE/NOISEFORM.HTML](http://WWW.PAINEFIELD.COM/NOISE/NOISEFORM.HTML)

NOISE SUMMARY REPORTS: [HTTP://WWW.PAINEFIELD.COM/NOISE/NOISESUMMARY.HTML](http://WWW.PAINEFIELD.COM/NOISE/NOISESUMMARY.HTML)

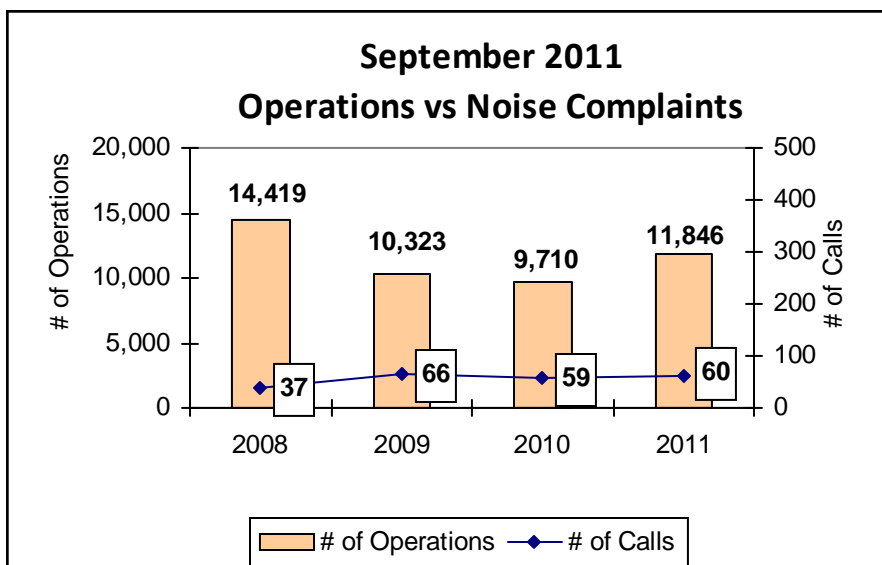
PAINE FIELD HAPPENINGS: [HTTP://WWW.PAINEFIELD.COM/HAPPENINGS/HAPPENINGS.HTML](http://WWW.PAINEFIELD.COM/HAPPENINGS/HAPPENINGS.HTML)

Noise Brief:

During September 2011, the airport office received 60 noise related calls and emails from individuals in the surrounding communities. All of the calls were regarding flight operations.

Complaints:

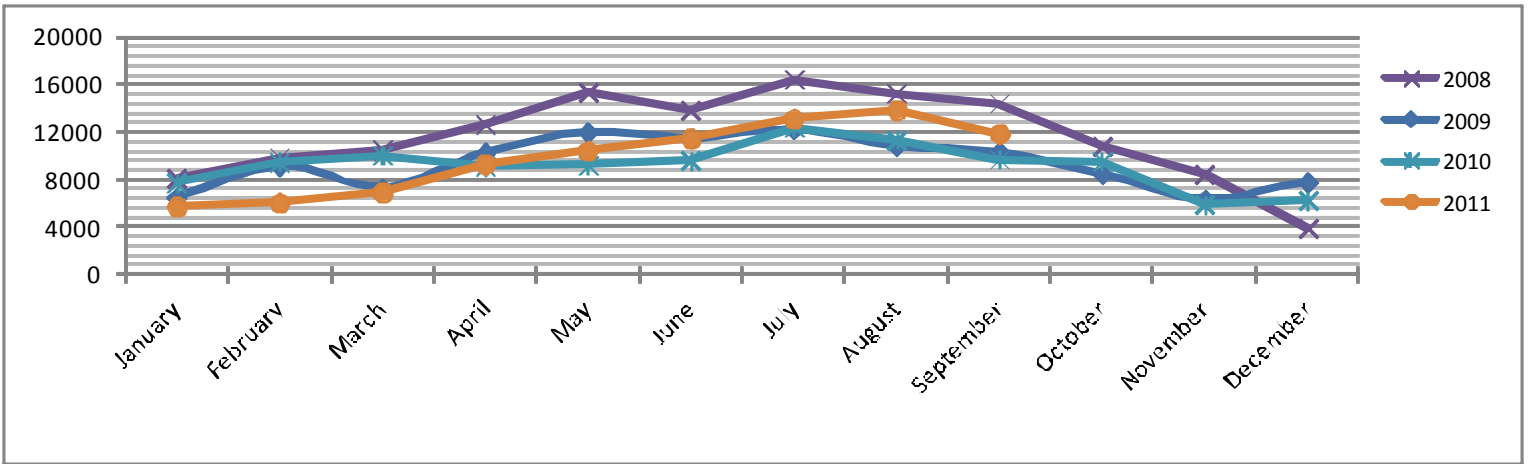
Many factors contribute to the amount of complaints received each month by how many people. Complaint totals are rarely consistent due to factors ranging from one unusual flight event that generates multiple complaints from a large group of people, an overcast day which blocks in sound, or perhaps a new homeowner that didn't notice the flight paths before the purchase of the property.



For further information, please call Airport Operations at 425-388-5125

PAINE FIELD AIRPORT • 3220 100TH ST SW • EVERETT, WA 98204
NOISE HOTLINE: 425-353-2110 x1

Monthly Operations Levels 2008–2011

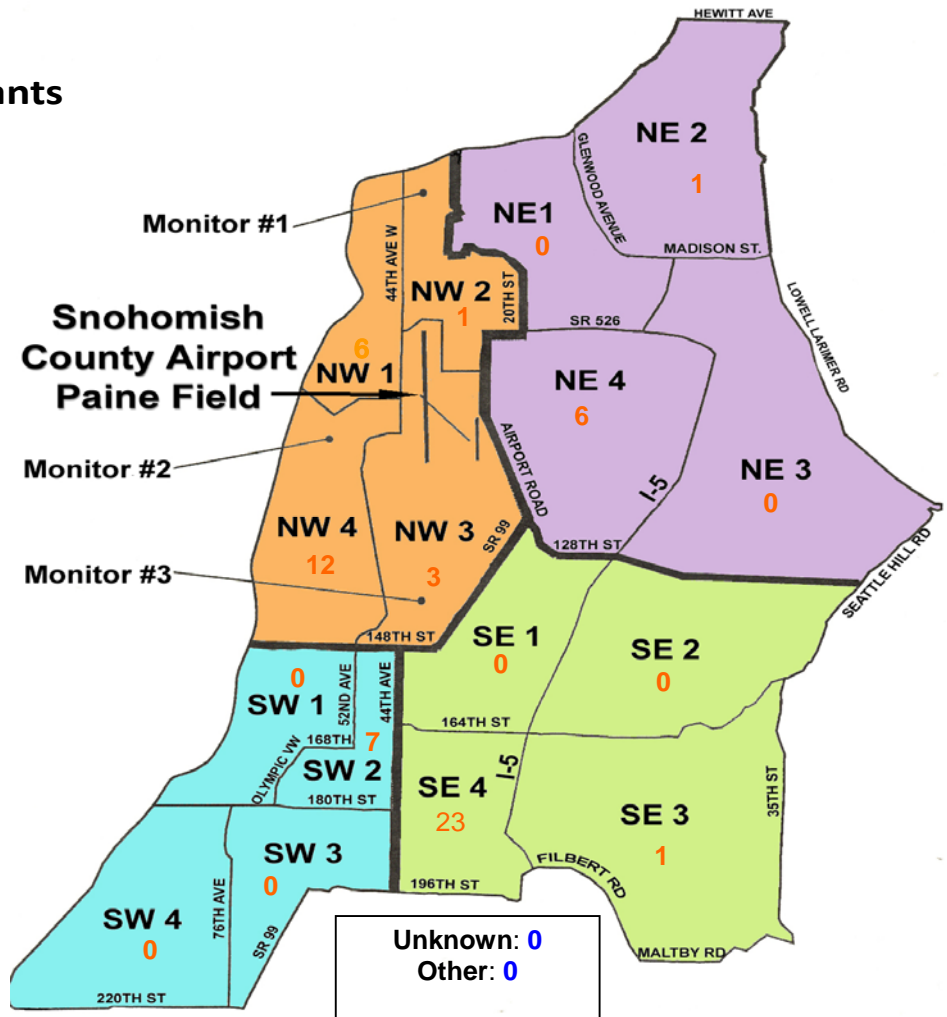


During September 2011, the FAA Paine Field Air Traffic Control Tower recorded 11,846 flight operations. This is a 22% increase in operations from September 2010, which had 9710 operations.

The four-year average number of flight operations for the month of September is 11,575. Total operations for September 2011 is 2% above the four-year average.

Paine Field Community Quadrants

The graphic to the right depicts Paine Field's 16 noise quadrants. The red numbers within each quadrant represent how many calls were made from that quadrant in the month of September. "Unknown" represents complaints where the caller's quadrant was not identified. "Other" represents complaints from outside the four



Caller Complaints

Noise complaints are received via telephone hotline or through the airport web page noise complaint form .

Upon receipt, complaints are investigated. Airport staff uses the AIRSCENE data and other sources to help identify which operation generated the noise complaint. The FAA retains radar data for 3 days before providing it to the airport's AIRSCENE noise monitoring system.

The aircraft operator is then notified of the complaint and made aware of the airport's noise abatement program. Callers who specifically request to be contacted are called back.

Since FAA operations data is not released until the third week of the following month, the monthly

summary report is posted online (see *Online* on page 1) the fourth week of the following month.

Caller Identification Codes are listed in the first column of the complaint table. You should be able to identify yourself by the first 3 letters of your last name and the date and time you called in. If you are having trouble identifying your new code, please call the airport office and we will look you up.

First time callers will receive a one-time hard copy mailing of this monthly noise summary. After the initial mailing, future reports will be posted online at the websites listed on the front of this report. The aircraft operations listed on this page (and next) are presumed to have originated or completed their flights at Paine Field.

Caller Code	Start Date/Time	Operation	Runway	Call Sign	Aircraft	Caller Comments	Community
FIS001	9/2/2011 17:31	ARR	34L	BOE504	747-8	Loud	SE4
FIS001							SE4
FIS001	9/4/2011 10:26	n/a	n/a	n/a	n/a	Loud & Low	SE4
FIS001	9/4/2011 10:46	ARR	34L	LXJ610	Lear Jet 40	Loud & Low	SE4
FIS001	9/4/2011 12:39	n/a	n/a	n/a	n/a	Loud & Low	SE4
MAG002	9/4/2011 16:50	n/a	n/a	n/a	n/a	Loud & Low	NW4
MOR005	9/5/2011 12:05	DEP	34L	n/a	n/a	Loud & Low	NW1
FIS001	9/7/2011 17:43	ARR	34L	BOE522	747-8	Loud & Low	SE4
QUI001	9/8/2011 0:30	DEP	34L	ARMY26302	UH-60	Continual noise for the past 15 minutes	NW4
EDW003	9/8/2011 10:05	DEP	16R	N387HA	Lear Jet 35	Inbound over our house	SW2
FIS001	9/8/2011 11:54	ARR	34L	BOE521	747-8	Loud & Low	SE4
FIS001	9/9/2011 0:06	ARR	16R	SWA8504	737-700	Loud & Low	SE4
FIS001	9/9/2011 15:16	ARR	34L	BOE137	777-300	Loud & Low	SE4
SAW001	9/9/2011 16:00	n/a	n/a	n/a	n/a	Loud & Low	SE4
PAR002	9/12/2011 12:30	DEP	16R	N45FW	PA32	Too low	SE3
EDW003	9/12/2011 14:12	DEP	16R	GTI4512	747-LCF	Outbound	SW2
ARD001	9/12/2011 17:58	ARR	16R	BOE504	747-8	Loud	NE4
FIS001							SE4
JAK003	9/13/2011 11:47	ARR	UNK	BOE517	737-8	Loud and low	NE4

Caller Complaints

Caller Code	Date/Time	Operation	Runway	Call Sign	Aircraft Type	Comments	Community
FIS001	9/14/2011 11:13	n/a	n/a	n/a	n/a	Loud and Low	SE4
LOW002	9/15/2011 9:04	n/a	n/a	n/a	n/a	Loud low over condo	NE4
FIS001	9/15/2011 14:01	DEP	16R	GTI4536	747-LCF	Loud and far too low	SE4
FIS001	9/19/2011 19:49	ARR	34L	GTI4351	747-LCF	Low and noise	SE4
EDW003	9/20/2011 14:17	DEP	16R	BOE137	777-300	Outbound	SW2
EDW003	9/20/2011 14:45	DEP	16R	BOE101	787	Outbound	SW2
EDW003	9/20/2011 17:10	ARR	34L	BOE101	787	Inbound	SW2
FIS001	9/20/2011 18:36	n/a	n/a	n/a	n/a	Noisy	SE4
GRE002	9/23/2011 8:40	n/a	n/a	n/a	n/a	Planes flying over Lake Serene School	NW3
HIG002	9/23/2011 13:32	n/a	n/a	n/a	n/a	Environmental Complaint	NW2
EDW003	9/23/2011 20:05	n/a	n/a	n/a	n/a	General Complaint	SW2
RAP001	9/23/2011 22:00	DEP	34L	GTI4536	747-LCF	Low and Loud	NW3
WOO010	9/24/2011 9:47	DEP	16R	BOE153	777-300	Noisy	NW4
CRO001							NW1
JAK003	9/24/2011 11:30	n/a	n/a	n/a	n/a	Noisy	NE4
GIB002	9/24/2011 12:23	T & G	16R	BOE967	767-300	Loud and low, Out of flight path	NW1
HEL001							NW4
SCR001							NW4
GIB002							NW1
POR001							NW4
JER001							NW4
CAN002							NW4
JAY003							NW1
TIM003							NW1
GRI008							NW3
SCR002							NW4
JUN002							NW1
JUD002							9/24/2011 13:30
TOO001	9/24/2011 16:38	n/a	n/a	n/a	n/a	Low	NW4
FIS001							SE4
FIS001	9/25/2011 10:30	n/a	n/a	n/a	n/a	Loud	SE4
FIS001	9/25/2011 11:49	DEP	16R	CYFUL	C560	Loud, Low	SE4
FIS001	9/25/2011 11:51	n/a	n/a	n/a	n/a	Loud	SE4
FIS001	9/27/2011 7:48	DEP	16R	GTI4536	747-LCF	Loud and low	SE4
JAK003	9/27/2011 8:20	DEP	34L	SWA8500	737-300	Loud and low	NE4
JAK003	9/27/2011 8:26	n/a	n/a	n/a	n/a	Loud	NE4
FIS001	9/29/2011 10:05	ARR	34L	FIV706	C750	Loud and low	SE4
FIS001	9/29/2011 19:05	n/a	n/a	n/a	n/a	Loud and low	SE4
FIS001	9/29/2011 23:55	DEP	16R	ASA9004	737-400	Loud and low	SE4
EDW003	9/30/2011 11:45	ARR	16R	BOE187	777-300	Inbound	SW2
WOO010	9/30/2011 11:48	ARR	16R	BOE967	767-300	Noisy	NW4