

MONTHLY OPERATIONS & NOISE SUMMARY

PAINE FIELD AIRPORT

AUGUST 2011

ONLINE AT WWW.PAINEFIELD.COM

NOISE COMMENT FORM: [HTTP://WWW.PAINEFIELD.COM/NOISE/NOISEFORM.HTML](http://WWW.PAINEFIELD.COM/NOISE/NOISEFORM.HTML)

NOISE SUMMARY REPORTS: [HTTP://WWW.PAINEFIELD.COM/NOISE/NOISESUMMARY.HTML](http://WWW.PAINEFIELD.COM/NOISE/NOISESUMMARY.HTML)

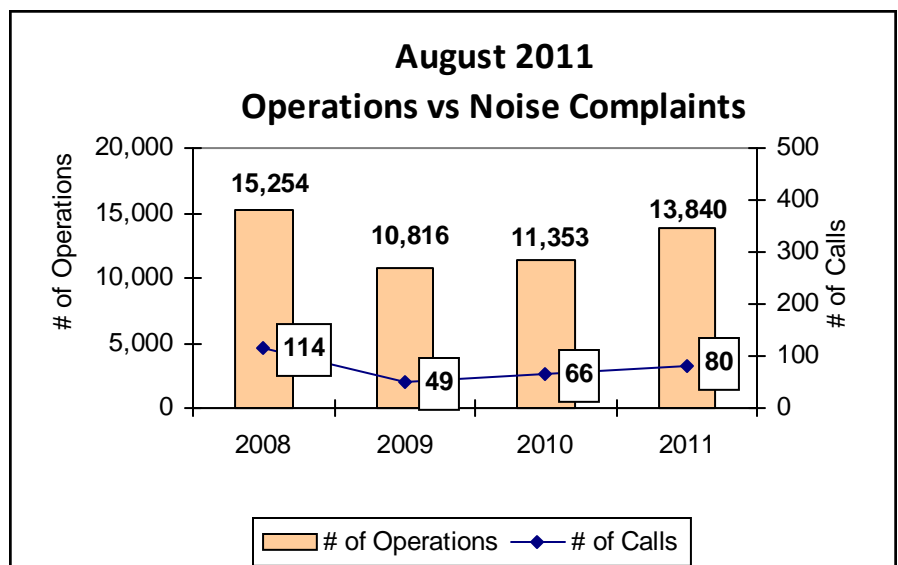
PAINE FIELD HAPPENINGS: [HTTP://WWW.PAINEFIELD.COM/HAPPENINGS/HAPPENINGS.HTML](http://WWW.PAINEFIELD.COM/HAPPENINGS/HAPPENINGS.HTML)

Noise Brief:

During August 2011, the airport office received 80 noise related calls and emails from individuals in the surrounding communities. All of the calls were regarding flight operations.

Complaints:

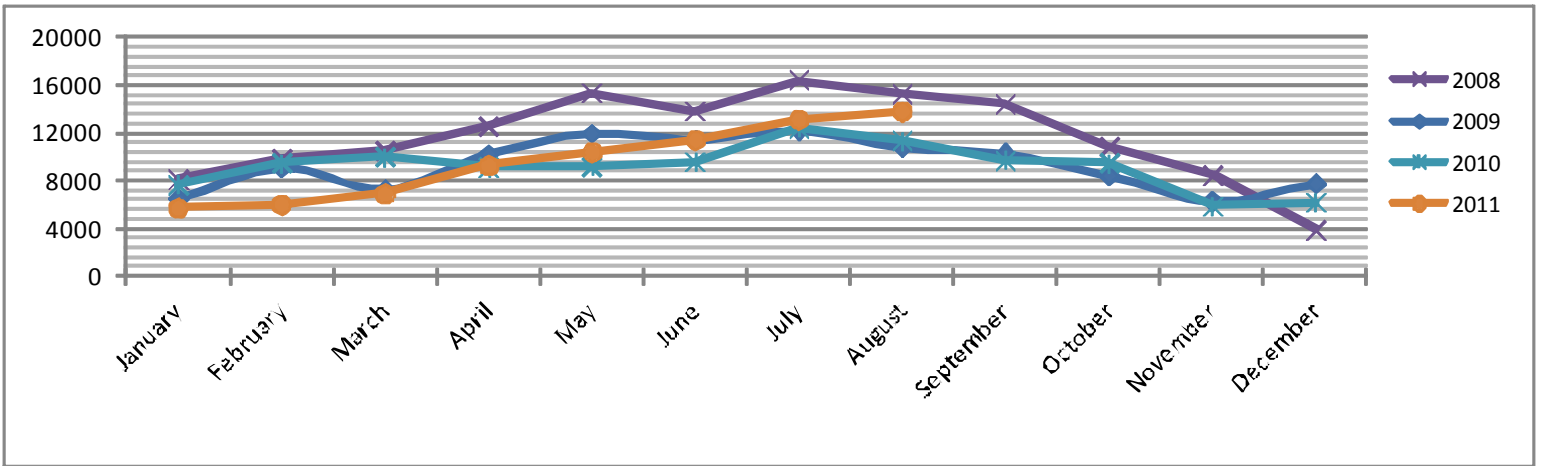
Many factors contribute to the amount of complaints received each month by how many people. Complaint totals are rarely consistent due to factors ranging from one unusual flight event that generates multiple complaints from a large group of people, an overcast day which blocks in sound, or perhaps a new homeowner that didn't notice the flight paths before the purchase of the property.



For further information, please call Airport Operations at 425-388-5125

PAINE FIELD AIRPORT • 3220 100TH ST SW • EVERETT, WA 98204
NOISE HOTLINE: 425-353-2110 x1

Monthly Operations Levels 2008–2011

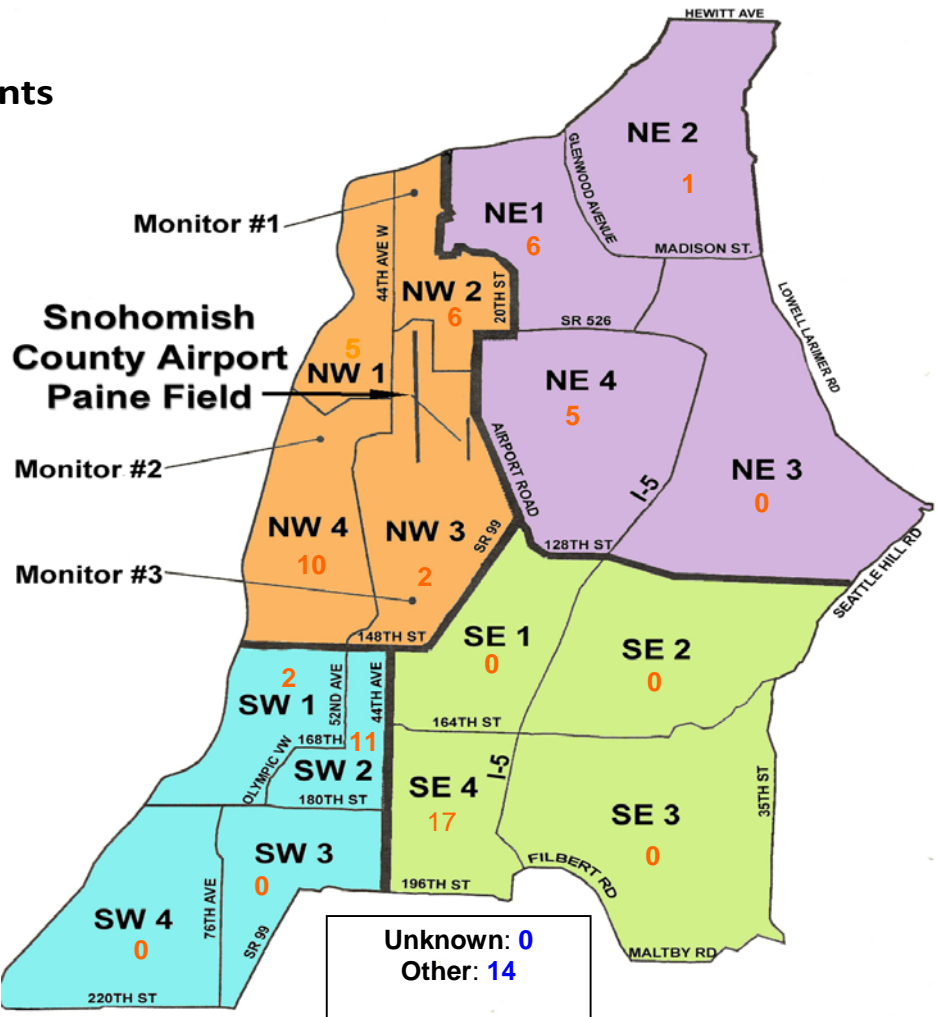


During August 2011, the FAA Paine Field Air Traffic Control Tower recorded 13840 flight operations. This is a 22% increase in operations from August 2010, which had 11353 operations.

The four-year average number of flight operations for the month of August is 12816. Total operations for August 2011 is 8% above the four-year average.

Paine Field Community Quadrants

The graphic to the right depicts Paine Field's 16 noise quadrants. The red numbers within each quadrant represent how many calls were made from that quadrant in the month of August. "Unknown" represents complaints where the caller's quadrant was not identified. "Other" represents complaints from outside the four major quadrants.



Caller Complaints

Noise complaints are received via telephone hotline or through the airport web page noise complaint form .

Upon receipt, complaints are investigated. Airport staff uses the AIRSCENE data and other sources to help identify which operation generated the noise complaint. The FAA retains radar data for 3 days before providing it to the airport's AIRSCENE noise monitoring system.

The aircraft operator is then notified of the complaint and made aware of the airport's noise abatement program. Callers who specifically request to be contacted are called back.

Since FAA operations data is not released until the third week of the following month, the monthly

summary report is posted online (see *Online* on page 1) the fourth week of the following month.

Caller Identification Codes are listed in the first column of the complaint table. You should be able to identify yourself by the first 3 letters of your last name and the date and time you called in. If you are having trouble identifying your new code, please call the airport office and we will look you up.

First time callers will receive a one-time hard copy mailing of this monthly noise summary. After the initial mailing, future reports will be posted online at the websites listed on the front of this report. The aircraft operations listed on this page (and next) are presumed to have originated or completed their flights at Paine Field.

| Caller Code | Date/Time | Flight Operation | Runway | Flight ID | Aircraft | Caller Comments | Community |
|-------------|-----------------|------------------|--------|-----------|----------|-----------------|-----------|
| Edw003 | 8/1/2011 15:25 | ARR | 34L | BOE522 | 747-8 | Inbound | SW2 |
| KUL001 | 8/1/2011 23:15 | ARR | 34L | N48521 | C-172 | Loud and low | NE1 |
| MAH001 | 8/2/2011 7:15 | DEP | 16R | BOE523 | 747-8 | Loud | SW2 |
| GRU001 | 8/2/2011 16:18 | ARR | 16R | BOE522 | 747-8 | Low, Loud | OTH |
| STE001 | 8/3/2011 13:20 | ARR | 34L | BOE521 | 747-8 | Low and low | SW2 |
| STA006 | 8/4/2011 11:53 | T & G | 16R | BOE102 | 787 | Low, Loud | SW1 |
| Edw003 | 8/6/2011 19:30 | T & G | 16R | BOE102 | 787 | Outbound | SW2 |
| FIS001 | 8/6/2011 21:15 | ARR | 34L | SWA8507 | 737-3 | Low, Noisy | SE4 |
| EDW003 | 8/7/2011 16:00 | ARR | 34L | BOE522 | 747-8 | Low, Loud | SW2 |
| HOW008 | 8/7/2011 17:10 | n/a | n/a | n/a | n/a | Low, Loud | NE2 |
| FIS001 | 8/8/2011 11:12 | DEP | 16R | BOE005 | 787 | Low, Noisy | SE4 |
| FIS001 | 8/8/2011 19:55 | ARR | 16R | BOE102 | 787 | Low, Noisy | SE4 |
| WAR004 | 8/9/2011 14:30 | n/a | n/a | n/a | n/a | Low, Loud | NE4 |
| WAR004 | 8/11/2011 12:37 | n/a | n/a | n/a | n/a | Low, Loud | NE4 |
| FRA003 | 8/11/2011 16:01 | DEP | 16R | BOE102 | 787 | Loud, Intrusive | OTH |
| JAK003 | 8/12/2011 9:00 | DEP | 16R | BOE522 | 747-8 | Low, Loud | NE4 |
| QUI001 | 8/13/2011 0:05 | ARR | 34L | SWA8510 | 737-300 | Low, Loud | NW4 |
| QUI001 | 8/13/2011 0:56 | ARR | 34L | SWA8511 | 737-700 | Loud | NW4 |
| QUI001 | 8/14/2011 0:25 | DEP | 16R | SWA8506 | 737-3 | | NW4 |
| FIS001 | 8/14/2011 11:13 | Transitioning | x | Airlift 5 | EC-135 | Low, Noisy | SE4 |
| FIS001 | 8/14/2011 15:34 | ARR | 34L | N720MM | 737-700 | Low, Noisy | SE4 |
| EDW003 | 8/14/2011 20:00 | Transitioning | x | Airlift 5 | EC-135 | Low, Noisy | SW2 |

Caller Complaints

| Caller Code | Date/Time | Operation | Runway | Call Sign | Aircraft Type | Comments | Community |
|-------------|-----------------|-------------|--------|--------------------------|---------------|--|-----------|
| JAK003 | 8/15/2011 8:06 | ARR | 34L | N91DT | RV10 | Too low over my house | NE4 |
| GRU001 | 8/15/2011 17:02 | n/a | n/a | n/a | n/a | Loud, Low | OTH |
| BUD001 | 8/15/2011 17:16 | ARR | 34L | BOE091 | 777-300 | Too Loud | NW3 |
| GRU001 | 8/15/2011 17:40 | ARR | 16R | BOE522 | 747-8 | Low and low | OTH |
| FIS001 | 8/16/2011 12:48 | ARR | 34L | BOE522 | 747-8 | Low and loud | SE4 |
| GRU001 | 8/16/2011 13:25 | DEP | 34L | ME262 | Me-262 | Very Low and Very Loud | OTH |
| EDW003 | 8/16/2011 15:24 | n/a | n/a | n/a | n/a | Loud | SW2 |
| BOV002 | 8/16/2011 17:22 | ARR | 34L | BOE522 | 747-8 | Low and Loud | SW1 |
| FIS001 | 8/16/2011 20:45 | ARR | 34L | SWA8701 | 737-300 | Low and low | SE4 |
| EDW003 | 8/17/2011 17:40 | ARR | 34L | BOE604 | 737-800 | Low, Loud | SW2 |
| QUI001 | 8/18/2011 1:48 | DEP | 34L | SWA8504 | 737 | Late Loud | NW4 |
| CLI001 | 8/18/2011 2:30 | Transition- | x | n/a | Heli | Late, Loud | NW2 |
| SMU001 | 8/18/2011 14:01 | ARR | 34L | BOE972 | 767-300 | Loud, Low | NW4 |
| EDW003 | 8/18/2011 17:35 | DEP | 34L | BOE972 | 767-300 | Loud | SW2 |
| HEL005 | 8/18/2011 19:30 | Transition- | x | UNKNOWN | UNKN | | NW2 |
| FRA003 | 8/19/2011 12:02 | DEP | 34L | BOE033 | 777-200 | Loud and intrusive | OTH |
| GIB002 | 8/20/2011 12:35 | DEP | 34L | Various Vintage Aircraft | Spitfire | Low and loud; formation; fly-by's | NW1 |
| PEA002 | 8/20/2011 16:44 | DEP | 34L | North AmericanB-17 | B-17 | Loud, Low | NW1 |
| KUL001 | 8/20/2011 18:24 | DEP | 34L | GTI4512 | 747-LCF | Low, Loud | NE1 |
| DEC001 | 8/21/2011 10:15 | DEP | 16R | North AmericanB-17 | B-25 | Too Loud | NW2 |
| FIS001 | 8/22/2011 23:45 | n/a | n/a | n/a | n/a | Loud, Low | SE4 |
| DAR001 | 8/23/2011 18:32 | n/a | n/a | n/a | n/a | Loud | NW4 |
| FIS001 | 8/23/2011 23:45 | ARR | 34R | N5512E | C-172 | Loud | SE4 |
| BEY001 | 8/24/2011 5:10 | ARR | 16R | BOE001 | 787 | Loud and early morning. 4 landings between 0510 and 0530 | NW1 |
| STO002 | 8/24/2011 5:10 | | | | | | NW1 |
| BRE004 | 8/24/2011 5:15 | | | | | | NW1 |
| FIS001 | 8/24/2011 7:17 | n/a | n/a | n/a | n/a | Loud, Low | SE4 |
| FIS001 | 8/24/2011 7:43 | n/a | n/a | n/a | n/a | | SE4 |
| DEC001 | 8/24/2011 13:03 | n/a | n/a | n/a | n/a | Loud, low | NW2 |
| TUR001 | 8/25/2011 1:08 | ARR | 16R | ASA9202 | 737-400 | Late night | NW4 |
| QUI001 | 8/25/2011 1:35 | n/a | n/a | n/a | n/a | Late night | NW4 |
| DEC001 | 8/25/2011 8:15 | DEP | 34L | BOE522 | 747-8 | Loud | NW2 |

| Caller Code | Date/Time | Operation | Runway | Call Sign | Aircraft Type | Comments | Community |
|-------------|-----------------|-----------|--------|-----------|---------------|------------------------------------|-----------|
| DEC001 | 8/25/2011 8:20 | n/a | n/a | n/a | n/a | Loud | NW2 |
| EDW003 | 8/25/2011 14:00 | T & G | 16R | BOE622 | 737-800 | Outbound | SW2 |
| EDW003 | 8/25/2011 17:05 | n/a | n/a | n/a | n/a | Inbound | SW2 |
| GRU001 | 8/25/2011 18:05 | ARR | 16R | BOE075 | 777-200 | Loud and semi noisy | OTH |
| KUL001 | 8/25/2011 19:46 | n/a | n/a | n/a | n/a | Loud | NE1 |
| FRA003 | 8/26/2011 10:26 | DEP | 34L | BOE075 | 777-200 | Loud and intrusive | OTH |
| FLA002 | 8/26/2011 11:07 | ARR | 16R | BOE002 | 787 | Low | OTH |
| KUL001 | 8/26/2011 11:24 | ARR | 16R | BOE075 | 777-200 | Too Noisy | NE1 |
| KUL001 | 8/26/2011 11:36 | DEP | 34L | N502JJ | C-414 | Noisy | NE1 |
| FIS001 | 8/26/2011 14:37 | DEP | 16R | N935AX | DC-3 | Loud and Low | SE4 |
| FRA003 | 8/26/2011 14:44 | DEP | 34L | BOE521 | 747-8 | Loud and intrusive | OTH |
| FRA003 | 8/26/2011 15:44 | ARR | 34L | BOE966 | 767-300 | Loud and intrusive | OTH |
| GRU001 | 8/26/2011 16:46 | ARR | 16R | BOE521 | 747-8 | Loud and Low | OTH |
| FIS001 | 8/26/2011 23:26 | ARR | 34L | SWA8510 | 737-700 | Loud and Low | SE4 |
| FRA003 | 8/27/2011 12:34 | n/a | n/a | n/a | n/a | Loud and Low | OTH |
| BEZ001 | 8/27/2011 13:02 | T & G | 34L | BOE622 | 737-800 | Loud, Low | NW4 |
| LAR006 | 8/27/2011 13:40 | n/a | n/a | n/a | n/a | Concerned about aircraft maneuvers | NW3 |
| FIS001 | 8/28/2011 10:30 | n/a | n/a | n/a | n/a | Noisy, Low | SE4 |
| DAR001 | 8/28/2011 11:00 | ARR | 34L | N461QS | GLF4 | Low | NW4 |
| FIS001 | 8/28/2011 14:06 | n/a | n/a | n/a | n/a | Noisy, Low | SE4 |
| FIS001 | 8/28/2011 14:12 | DEP | 16R | GTI4532 | 747-LCF | Noisy, Low | SE4 |
| FIS001 | 8/29/2011 13:45 | DEP | 16R | CPA3337 | 777-200 | Low, Noisy | SE4 |
| KUL001 | 8/29/2011 13:54 | n/a | n/a | n/a | n/a | Loud | NE1 |
| JAK003 | 8/31/2011 9:00 | ARR | 34L | FIV705 | Citation 750 | Loud | NE4 |
| GRU001 | 8/31/2011 17:59 | ARR | 16R | BOE502 | 747-8 | and low | OTH |