

MONTHLY OPERATIONS & NOISE SUMMARY

PAINE FIELD AIRPORT

JULY 2011

ONLINE AT WWW.PAINEFIELD.COM

NOISE COMMENT FORM: [HTTP://WWW.PAINEFIELD.COM/NOISE/NOISEFORM.HTML](http://WWW.PAINEFIELD.COM/NOISE/NOISEFORM.HTML)

NOISE SUMMARY REPORTS: [HTTP://WWW.PAINEFIELD.COM/NOISE/NOISESUMMARY.HTML](http://WWW.PAINEFIELD.COM/NOISE/NOISESUMMARY.HTML)

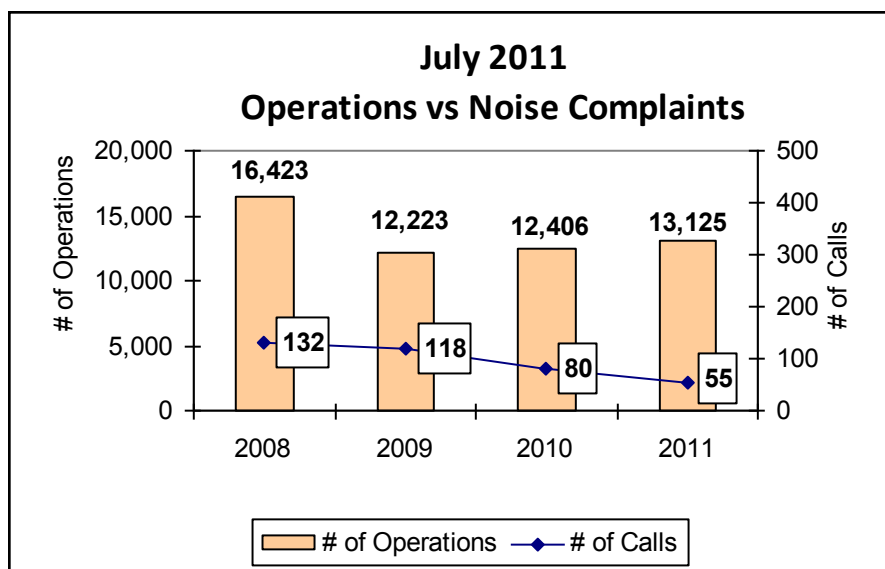
PAINE FIELD HAPPENINGS: [HTTP://WWW.PAINEFIELD.COM/HAPPENINGS/HAPPENINGS.HTML](http://WWW.PAINEFIELD.COM/HAPPENINGS/HAPPENINGS.HTML)

Noise Brief:

During July 2011, the airport office received 55 noise related calls and emails from individuals in the surrounding communities. All of the calls were regarding flight operations.

Complaints:

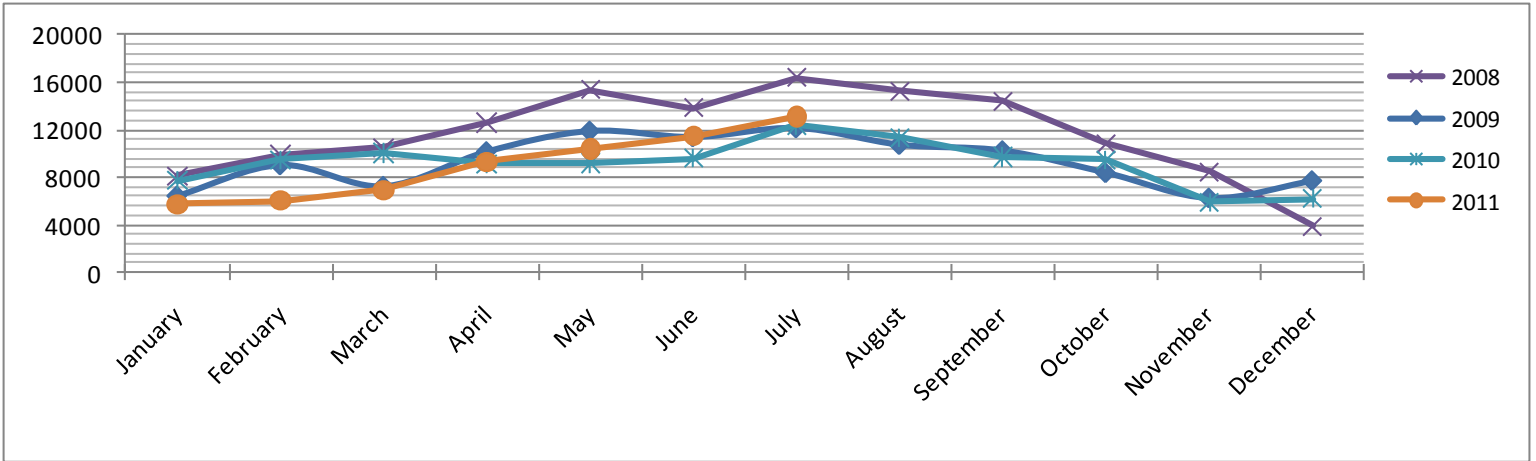
Many factors contribute to the amount of complaints received each month by how many people. Complaint totals are rarely consistent due to factors ranging from one unusual flight event that generates multiple complaints from a large group of people, an overcast day which blocks in sound, or perhaps a new homeowner that didn't notice the flight paths before the purchase of the property.



For further information, please call Airport Operations at 425-388-5125

PAINE FIELD AIRPORT • 3220 100TH ST SW • EVERETT, WA 98204
NOISE HOTLINE: 425-353-2110 x1

Monthly Operations Levels 2008–2011

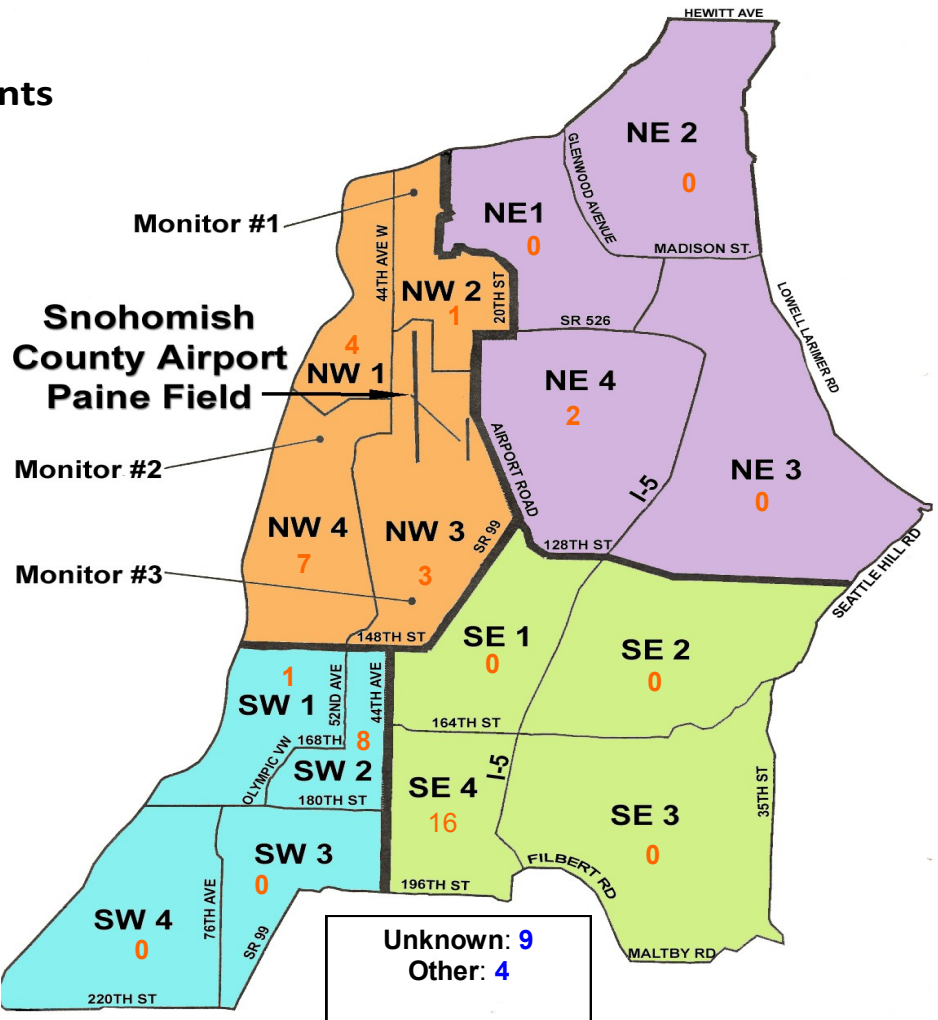


During July 2011, the FAA Paine Field Air Traffic Control Tower recorded 13,125 flight operations. This is a 6% increase in operations from July 2010, which had 12,406 operations.

The four-year average number of flight operations for the month of July is 13,544. Total operations for July 2011 is 3% below the four-year average.

Paine Field Community Quadrants

The graphic to the right depicts Paine Field’s 16 noise quadrants. The red numbers within each quadrant represent how many calls were made from that quadrant in the month of July. “Unknown” represents complaints where the caller’s quadrant was not identified. “Other” represents complaints from outside the four major quadrants.



Caller Complaints

Noise complaints are received via telephone hotline or through the airport web page noise complaint form .

Upon receipt, complaints are investigated. Airport staff uses the AIRSCENE data and other sources to help identify which operation generated the noise complaint. The FAA retains radar data for 3 days before providing it to the airport's AIRSCENE noise monitoring system.

The aircraft operator is then notified of the complaint and made aware of the airport's noise abatement program. Callers who specifically request to be contacted are called back.

Since FAA operations data is not released until the third week of the following month, the monthly

summary report is posted online (see *Online* on page 1) the fourth week of the following month.

Caller Identification Codes are listed in the first column of the complaint table. You should be able to identify yourself by the first 3 letters of your last name and the date and time you called in. If you are having trouble identifying your new code, please call the airport office and we will look you up.

First time callers will receive a one-time hard copy mailing of this monthly noise summary. After the initial mailing, future reports will be posted online at the websites listed on the front of this report. The aircraft operations listed on this page (and next) are presumed to have originated or completed their flights at Paine Field.

Caller Code	Start Time/Date	Flight Operation	Runway	Flight ID	Aircraft Type	Caller Comments	Community
COH002	7/1/11 6:50	O	n/a	n/a	n/a	Low & Loud	SE4
FIS001							SE4
CHA008							NW1
FIS001	7/1/11 14:14	n/a	n/a	n/a	n/a	Low & Loud	SE4
SUL002							NW1
MCC001	7/1/11 23:10	DEP	34L	GTI4655	747-LCF	Low & Loud	NW2
RAP001	7/2/11 6:40	DEP	16R	BOE523	747-8	Low and loud	NW3
FIS001	7/2/11 17:44	ARR	34L	BOE523	747-8	Low and real low	SE4
FIS001	7/2/11 18:32	DEP	16R	BOE523	747-8	Low and real low	SE4
EDW003						Inbound and directly over house, Continuous all day	SW2
JEN004	7/3/11 15:45	ARR	34L	TWY401	Challenger 60		OTH
WOO010	7/5/11 16:22	T & G	16R	BOE293	737-800	Loud	NW4
FIS001	7/6/11 8:26	n/a	n/a	n/a	n/a	Loud	SE4
EDW003	7/6/11 13:47	ARR	34L	BOE186	777-300	Inbound over our house	SW2
FIS001	7/8/11 18:28						SE4
ROA001	7/8/11 18:30	DEP	16R	GTI4512	747-LCF	Loud, Low	SW2
CHR003	7/9/11 18:00	n/a	n/a	n/a	n/a	Could not be traced	NE4
EDW003	7/10/11 19:00	ARR	34L	BOE522	747-8	Inbound directly over our house	SW2
GRU001	7/11/11 18:30	ARR	16R	n/a	B-17	Low and loud military plane	OTH

Caller Complaints

Caller Code	Date/Time	Operation	Runway	Call Sign	Aircraft Type	Comments	Community
JAK003	7/15/11 10:00	n/a	n/a	n/a	n/a	General Complaint	NE4
KAM01	7/16/11 13:50	n/a	n/a	n/a	n/a	Noisy	NW4
McC007	7/16/11 14:00	n/a	n/a	n/a	n/a	General Complaint	NW4
KEN001	7/16/11 14:05						NW4
FIS001	7/17/11 10:27	n/a	n/a	n/a	n/a	General Complaint	SE4
FIS001	7/17/11 10:30						SE4
FIS001	7/17/11 10:37						SE4
GRU001	7/20/11 16:10	ARR	16R	BOE523	747-8	Loud and loud	OTH
GRU001	7/22/11 17:05	ARR	16R	BOE522	747-8	Loud and low	OTH
WOO010	7/23/11 13:38	T & G	16R	BOE601	737-700	Noisy, Low	NW4
WOO010	7/24/11 18:00	ARR	16R	BOE523	747-8	Noisy, Low	NW4
EDW003	7/24/11 18:02						SW2
KON002	7/24/11 23:40	DEP	34L	SWA8511	737-300	Loud noise after quiet time	NW1
BAR001	7/25/11 1:21	DEP	34L	SWA8549	737-300	Noisy & Low	NW4
FIS001	7/25/11 11:48	DEP	16R	BOE522	747-8	Noisy & low	SE4
GRU001	7/26/11 15:20	ARR	16R	BOE522	747-8	Noisy & Low	OTH
KOE002	7/27/11 13:10	T & G	34L	BOE864	777-300	Low and off flight path	SE4
EDW003	7/27/11 13:16						SW2
WOO010	7/27/11 13:21						NW4
QUI001	7/27/11 14:05	T & G	16R	n/a	FA-18	Growler did touch & go	NW4
CHA009	7/27/11 14:07						NW4
TAY005	7/27/11 14:10						NW3
KAN001	7/27/11 14:10						SW1
FIS001	7/28/11 20:10	n/a	n/a	n/a	could not be traced	Loud & low	SE4
EDW003	7/28/11 20:25	ARR	34L	BOE523	747-8	Inbound directly over house	SW2
RAP001	7/28/11 22:08	DEP	16R	BOE523	747-8	Low & Loud	NW3
GIB002	7/29/11 12:26	DEP	34L	NA972	North American	Loud & Low	NW1
PEA002	7/29/11 12:28						NW1
KOE002	7/29/11 21:57	n/a	n/a	n/a	n/a	Loud & Low	SE4
FIS001	7/30/11 7:59	DEP	16R	BOE523	747-8	and low	SE4
PAT004	7/30/11 12:00	n/a	n/a	n/a	n/a	Helicopter too loud circling	NE3
FIS001	7/30/11 13:54	DEP	16R	BOE523	747-8	Loud & Low	SE4
FIS001	7/30/11 15:37	ARR	16R	BOE523	747-8	Loud & Low	SE4
WOO010	7/30/11 16:46	T & G	16R	BOE705	737-800	Loud & Low	NW4
MAH001	7/31/11 7:15	DEP	16R	BOE523	747-8	Too Early	SW2