

# MONTHLY OPERATIONS & NOISE SUMMARY

PAINE FIELD AIRPORT

MAY 2011

ONLINE AT [WWW.PAINEFIELD.COM](http://WWW.PAINEFIELD.COM)

NOISE COMMENT FORM: [HTTP://WWW.PAINEFIELD.COM/NOISE/NOISEFORM.HTML](http://WWW.PAINEFIELD.COM/NOISE/NOISEFORM.HTML)

NOISE SUMMARY REPORTS: [HTTP://WWW.PAINEFIELD.COM/NOISE/NOISESUMMARY.HTML](http://WWW.PAINEFIELD.COM/NOISE/NOISESUMMARY.HTML)

PAINE FIELD HAPPENINGS: [HTTP://WWW.PAINEFIELD.COM/HAPPENINGS/HAPPENINGS.HTML](http://WWW.PAINEFIELD.COM/HAPPENINGS/HAPPENINGS.HTML)

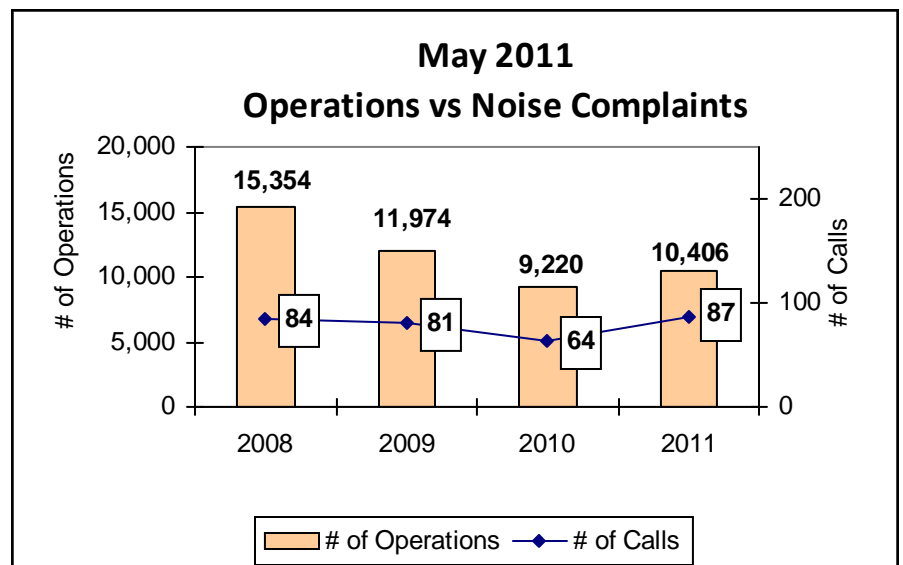
Over the course of the next several months, we may be changing a few graphs and tables to better reflect the information we think you might be interested in. Please be patient during this transition time. We have kept most of the data tables the same, and have added new information.

## Noise Brief:

During May 2011, the airport office received 87 noise related calls and emails from individuals in the surrounding communities. All of the calls were regarding flight operations.

## Complaints:

Many factors contribute to the amount of complaints received each month & by how many people. Complaint totals are rarely consistent due to factors ranging from one unusual flight event that generates multiple complaints from a large group of people, an overcast day which blocks in sound, or perhaps a new homeowner that didn't notice the flight paths before the purchase of the property.



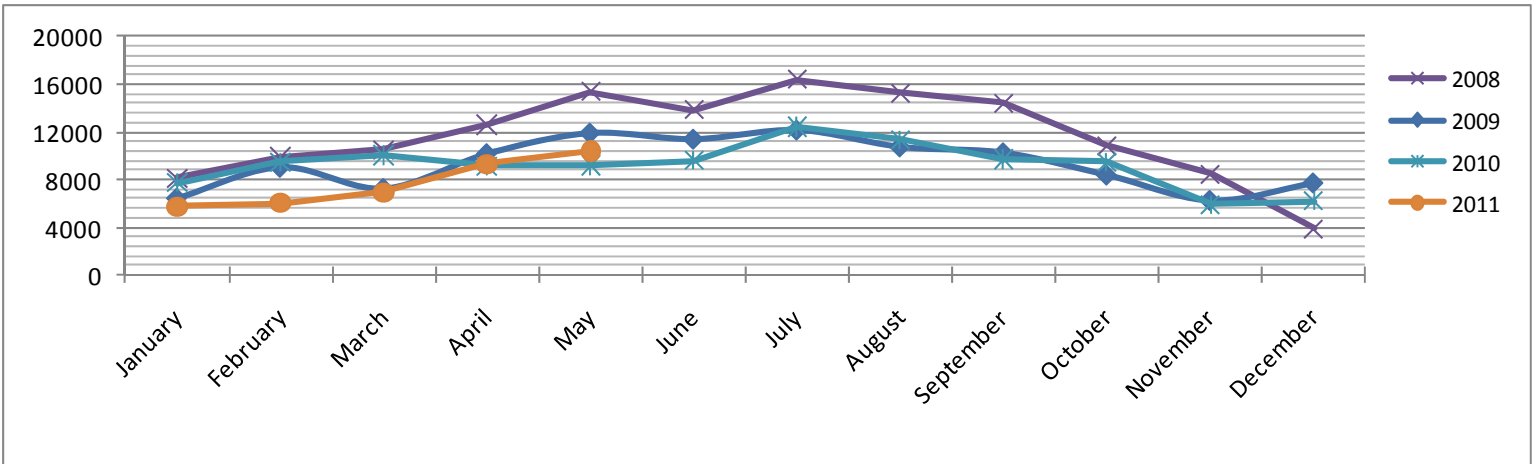
## Airside Update for May

General Aviation Day was held on May 21st. Paine Field featured our own Firefighter's Pancake breakfast, preceded by a 5k run around the perimeter road.

**For further information on any of the above topics please call  
Airport Operations at 425-388-5125**

**PAINE FIELD AIRPORT • 3220 100TH ST SW • EVERETT, WA 98204  
NOISE HOTLINE: 425-353-2110 x1**

## Monthly Operations Levels 2008–2011

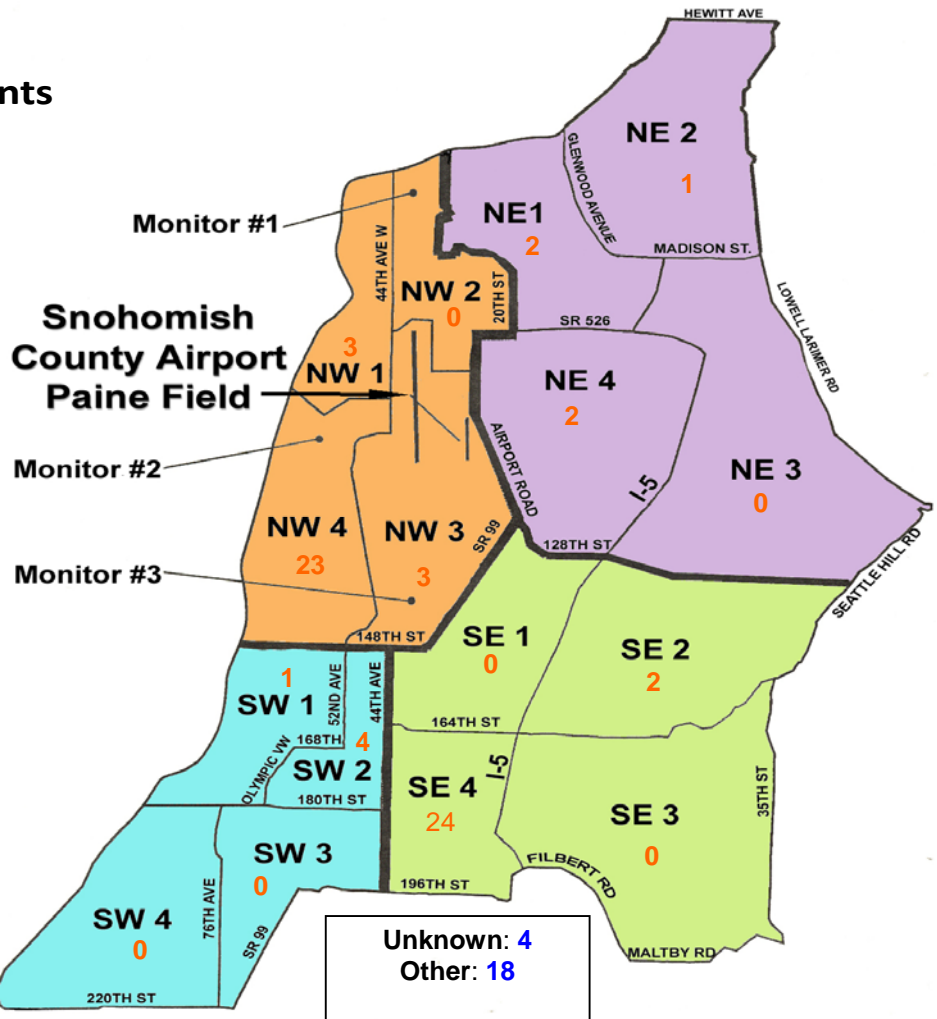


During May 2011, the FAA Paine Field Air Traffic Control Tower recorded 10,406 flight operations. This is a 13% increase in operations from May 2010, which had 9,220 operations.

The four-year average number of flight operations for the month of May is 11,784. Total operations for May 2011 is 12% below the four-year average.

## Paine Field Community Quadrants

The graphic to the right depicts Paine Field's 16 noise quadrants. The red numbers within each quadrant represent how many calls were made from that quadrant in the month of May. "Unknown" represents complaints where the caller's quadrant was not identified. "Other" represents complaints from outside the four major quadrants.



## Caller Complaints

Noise complaints are received via telephone hotline or through the airport web page noise complaint form .

Upon receipt, complaints are investigated. The FAA retains radar data for 3 days before providing it to the airport's AIRSCENE noise monitoring system. Airport staff uses the AIRSCENE data and other sources to help identify which operation generated the noise complaint.

The aircraft operator is then notified of the complaint and made aware of the airport's noise abatement program. Callers who specifically request to be contacted are called back.

Since FAA operations data is not released until the third week of the following month, the monthly

summary report is posted online (see *Online* on page 1) the fourth week of the following month.

**Caller Identification Codes are listed in the first column of the complaint table. You should be able to identify yourself by the first 3 letters of your last name and the date and time you called in. If you are having trouble identifying your new code, please call the airport office and we will look you up.**

First time callers will receive a one-time hard copy mailing of this monthly noise summary. After the initial mailing, future reports will be posted online at the websites listed on the front of this report. The aircraft operations listed on this page (and next) are presumed to have originated or completed their flights at Paine Field.

Caller Code	Date/ Time	Flight Operation	Runway	Call Sign	Aircraft Type	Traced To	Comments	Community
WOO010	5/1/2011 11:55	n/a	n/a	n/a	n/a	could not be traced	Loud, Low	NW4
DAR001	5/1/2011 14:15	n/a	n/a	n/a	n/a	could not be traced	Loud and dangerous, banking over my house	NW4
GRE002	5/4/2011 17:44	n/a	n/a	n/a	n/a	could not be traced	Lower than normal or necessary and scary loud	NW3
PAK001	5/5/2011 23:12	DEP	UNK	GTI4532	747-LCF	Atlas Air/Boeing	Loud, Woke me up	NW4
MEL004	5/6/2011 1:08	DEP	16R	SWA8503	737-700	Southwest/ATS	Loud, Late at night	NW1
FIS001	5/6/2011 10:03	n/a	n/a	n/a	n/a	could not be traced	Low, Noise	SE4
FIS001	5/6/2011 10:11	ARR	16R	N958GC	C-550	Private Owner	Low, Noise	SE4
FIS001	5/6/2011 10:18	DEP	16R	BOE523	747-8	Boeing	Loud & Low	SE4
DAR001	5/6/2011 20:05	DEP	16R	N6184Q	C-320	Private Owner	Too Loud	NW4
MEL004	5/6/2011 22:20	DEP	16R	GTI4322	747-LCF	Atlas Air/Boeing	Loud and low, Late, woke us up	NW1
GAH001								NW3
TRE001								NW4
ALV001								SE1
MIN004								SE4
BAD002								SW4
DAR001								NW4
BOV002	5/7/2011 17:23	n/a	n/a	n/a	n/a	could not be traced	Low and loud	SW1
WOO010	5/7/2011 17:23	n/a	n/a	n/a	n/a	could not be traced	Loud & Low	NW4

## Caller Complaints

Caller Code	Date/Time	Operation	Runway	Call Sign	Aircraft Type	Traced To	Comments	Community
FIS001	5/10/2011 8:30	DEP	16R	BOE522	747-8	Boeing	Noise & Low	SE4
FIS001	5/10/2011 9:13	DEP	16R	BOE503	747-8	Boeing	Noise & Low	SE4
FIS001	5/10/2011 9:58	DEP	16R	BOE677	777-300	Boeing	Noise & Low	SE4
GRU001	5/10/2011 11:46	n/a	n/a	n/a	n/a	could not be traced	Extremely loud	OTH
GRU001	5/10/2011 12:52	DEP	34L	SWA8503	737-500	Southwest/ATS	Jet went over very loud	OTH
GRU001	5/10/2011 12:55	n/a	n/a	n/a	n/a	Could not be traced	Jet went over very loud	OTH
GRU001	5/10/2011 13:00	n/a	n/a	n/a	n/a	could not be traced	Another noisy jet flying over	OTH
GRU001	5/10/2011 13:05	ARR		BOE677	777-300	Boeing	Low & Noisy	OTH
GRU001	5/10/2011 13:17	ARR	16R	BOE403	737-800	Boeing	Loud	OTH
GRU001	5/10/2011 13:20	n/a	n/a	n/a	n/a	n/a	Loud	OTH
TAY006	5/10/2011 13:45	n/a	n/a	n/a	n/a	could not be traced	Jet rattled windows	OTH
TAY006	5/10/2011 13:53	n/a	n/a	n/a	n/a	could not be traced	Another Jet flying	OTH
GRU001	5/10/2011 14:00	n/a	n/a	n/a	n/a	could not be traced	Very loud	OTH
GRU001	5/10/2011 15:20	n/a	n/a	n/a	n/a	could not be traced	Very Loud	OTH
GRU001	5/10/2011 17:55	n/a	n/a	n/a	n/a	could not be traced	Jet flying over	OTH
FIS001	5/10/2011 8:10	n/a	n/a	n/a	n/a	could not be traced	Extremely Low & Noisy	SE4
WOO010	5/12/2011 15:18	DEP	16R	BOE503	747-8	Boeing	Noisy & Low	NW4
GRU001	5/12/2011 17:38	ARR	16R	BOE115	737-800	Boeing	Very loud went over	OTH
WOO010	5/13/2011 9:21	DEP	16R	BOE451	737-800	Boeing	Noisy & Low	NW4
FIS001	5/13/2011 13:36	ARR	34L	NAC208	737-700	North American/ATS	Low & Noisy	SE4
FIS001	5/13/2011 16:34	ARR	34L	ASA9201	737-400	Alaska Airlines/ATS	Low & Noisy	SE4
FIS001	5/13/2011 16:44	ARR	34L	SWA8544	737-300	Southwest/ATS	Extremely Low	SE4
FIS001	5/13/2011 16:53	n/a	n/a	n/a	n/a	Could not be traced	Noisy & Low	SE4
FRA003	5/16/2011 11:17	T & G	16R	BOE953	737-800	Boeing	Loud & Intrusive	OTH
ISE001	5/17/2011 10:22	ARR	16R	BOE816	777-300	Boeing	Very loud & Low over houses	NE1
EDW003	5/17/2011 11:30	DEP	16R	BOE677	777-300	Boeing	Inbound Directly over house	SW2
WOO010								NW4
BUR006	5/17/2011 16:32	n/a	n/a	n/a	n/a	n/a	Big loud noise, Windows rattled	NW1
FIS001	5/17/2011 17:44						Noisy, Low	SE4
EDW003		ARR	34L	BOE952	777-300	Boeing	inbound Directly Over house	SW2
DES002	5/17/2011 18:30	DEP	34L	GTI4512	747-LCF	Atlas Air/Boeing	Low & Loud, out of flight path	NW1
FIS001	5/17/2011 19:38	ARR	34L	N7711B	C-510	Private Owner	Low & Loud	SE4

Caller Code	Date/Time	Operation	Runway	Call Sign	Aircraft Type	Traced To	Comments	Community					
FIS001	5/17/2011 20:44	ARR	34L	ASA9007	737-400	Alaska Airlines/ATS	Low & loud	SE4					
FIS001								SE4					
FIS001	5/17/2011 20:55	ARR	34L	ASA9200	737-8	Alaska Airlines/ATS	On top of my house	SE4					
KUL001	5/17/2011 22:22	DEP	34L	GTI4522	747-LCF	Atlas Air/Boeing	Loud, Low flying	NE1					
FIS001	5/18/2011 0:44	DEP	16R	SWA8504	737-300	Southwest/ATS	Low & Loud	SE4					
GAH001								NW3					
EDW003	5/18/2011 13:19	ARR	34L	BOE176	777-300	Boeing	Low, Noisy	SW2					
WOO010								NW4					
FIS001	5/19/2011 2:34	DEP	16R	SWA8501	737-300	Southwest/ATS	Loud, Low	SE4					
WOO010	5/19/2011 10:50	T & G	16R	BOE116	737-800	Boeing	Loud and intrusive	NW4					
FRA003								OTH					
FIS001	5/19/2011 14:09	n/a	n/a	n/a	n/a	could not be traced	Noisy & Low	SE4					
FIS001	5/19/2011 15:03	n/a	n/a	n/a	n/a	could not be traced	Loud & Low	SE4					
NGU001	5/19/2011 18:20	ARR	16R	AIRPC32	PA-32	Air Pac	Nuisance, Low	SE4					
DEA003	5/20/2011 14:05	n/a	n/a	n/a	n/a	could not be traced	King 5 helicopter, too low over the beach; inappropriate	NW1					
TOO001	5/21/2011 10:00	ARR	34L	BOE701	737-800	Boeing	Noise!	NW4					
WOO010	5/21/2011 12:50	DEP	34L	BOE176	n/a	Boeing	Loud, Low	NW4					
Mon003	5/21/2011 15:00	Low APP	16R	GTI4566	747-LCF	Atlas Air/Boeing	Loud & Low. Several occurrence	UNK					
JAK003		ARR/DEP						34L	Various Aircraft	Various Aircraft	General Aviation Day	Loud, Low, rattled my windows, every two minutes	NE4
WOO010													NW4
GAL001													NW4
WOO010													NW4
JAK003													NE4
EDW003	5/23/2011 9:20	DEP	16R	BOE522	747-8	Boeing	Outbound directly over our house						SW2
GRU001	5/23/2011 18:04	ARR	16R	BOE521	747-8	Boeing	Very Loud	OTH					
RAF002	5/23/2011 18:28	n/a	n/a	n/a	n/a	could not be traced	Circling, low & Loud						
FIS001	5/24/2011 10:33	DEP	16R	BOE976	767-300	Boeing	Loud & Low	SE4					
GRU001	5/24/2011 12:50	ARR	16R	BOE522	747-8	Boeing	Flying around like a beehive	OTH					
FIS001	5/24/2011 14:29	DEP	16R	SWA8503	737-300	Southwest/ATS	Loud & Low	SE4					
WOO010	5/27/2011 13:52	T & G	16R	BOE044	737-800	Boeing	Noisy	NW4					
GRU001	5/27/2011 19:20	ARR	16R	BOE523	747-8		Jet flying over the house	OTH					
HAN004	5/28/2011 12:21	DEP	34L	SWA8501	737-300	Southwest/ATS	Loud	NE2					
HEL001	5/30/2011 16:45	ARR	34L	TWY401	Challenger 60	Private Owner	Loud	NW4					
DAR001	5/30/2011 17:20	T & G	34L	SWA8505	737-700	Southwest/ATS	Loud, low	NW4					
WOO010	5/31/2011 16:19	n/a	n/a	n/a	n/a	Could not be traced	Low & Loud	NW4					
SNA001								SE1					