

MONTHLY OPERATIONS & NOISE SUMMARY

PAINE FIELD AIRPORT

APRIL 2011

ONLINE AT WWW.PAINEFIELD.COM

NOISE COMMENT FORM: [HTTP://WWW.PAINEFIELD.COM/NOISE/NOISEFORM.HTML](http://WWW.PAINEFIELD.COM/NOISE/NOISEFORM.HTML)

NOISE SUMMARY REPORTS: [HTTP://WWW.PAINEFIELD.COM/NOISE/NOISESUMMARY.HTML](http://WWW.PAINEFIELD.COM/NOISE/NOISESUMMARY.HTML)

PAINE FIELD HAPPENINGS: [HTTP://WWW.PAINEFIELD.COM/HAPPENINGS/HAPPENINGS.HTML](http://WWW.PAINEFIELD.COM/HAPPENINGS/HAPPENINGS.HTML)

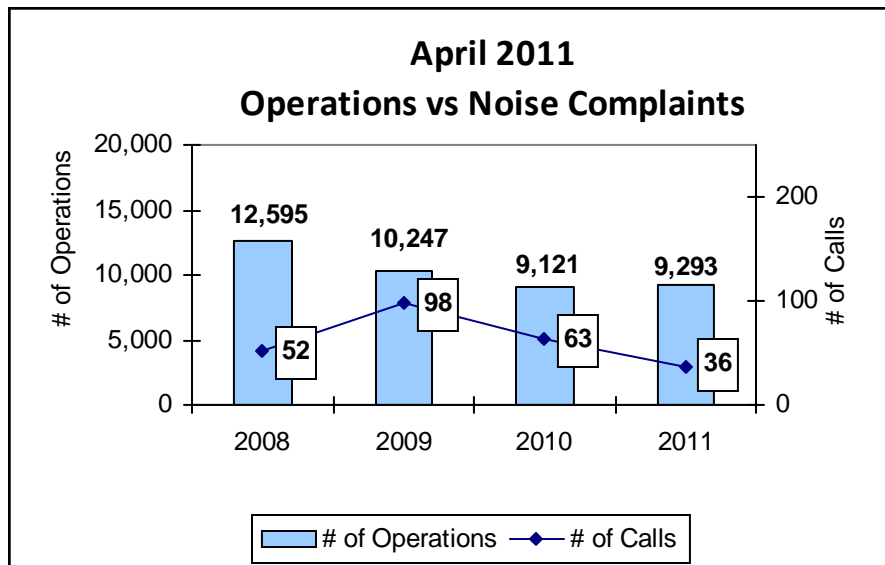
Over the course of the next several months, we may be changing a few graphs and tables to better reflect the information we think you might be interested in. Please be patient during this transition time. We have kept most of the data tables the same, and have added new information.

Noise Brief:

During April 2011, the airport office received 36 noise related calls and emails from individuals in the surrounding communities. All of the calls were regarding flight operations.

Complaints:

Many factors contribute to the amount of complaints received each month & by how many people. Complaint totals are rarely consistent due to factors ranging from one unusual flight event that generates multiple complaints from a large group of people, an overcast day which blocks in sound, or perhaps a new homeowner that didn't notice the flight paths before the purchase of the property.



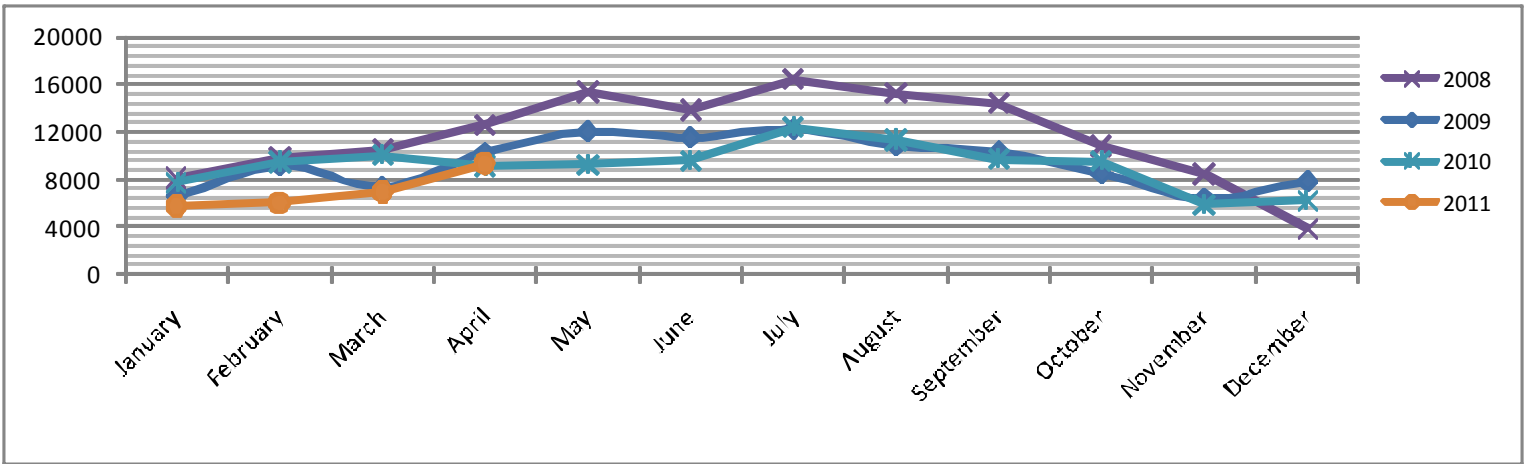
Airside Update for April

Runway 11-29 is closed for short term aircraft parking

For further information on any of the above topics please call
Airport Operations at 425-388-5125

PAINE FIELD AIRPORT • 3220 100TH ST SW • EVERETT, WA 98204
NOISE HOTLINE: 425-353-2110 X1

Monthly Operations Levels 2008–2011

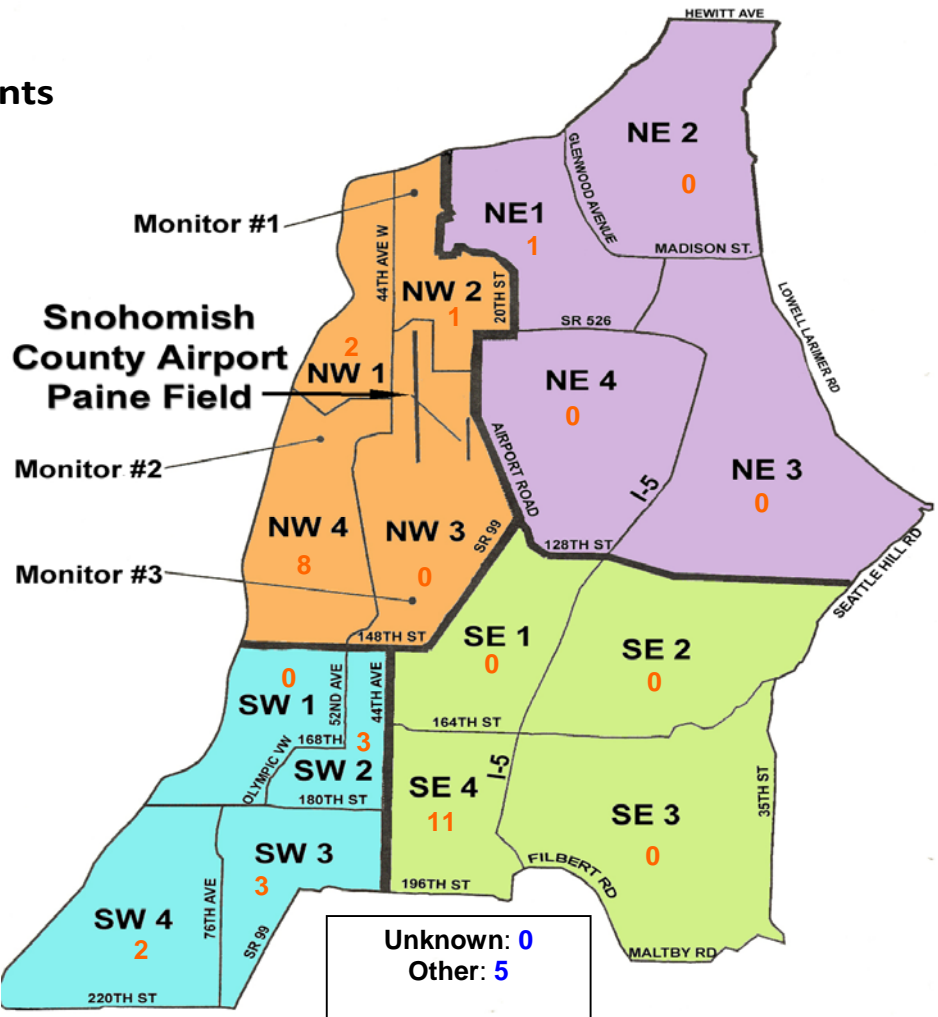


During April 2011, the FAA Paine Field Air Traffic Control Tower recorded 9,293 flight operations. This is a 2% increase in operations from April 2010, which had 9,121 operations.

The four-year average number of flight operations for the month of April is 10,314. Total operations for April 2011 is 10% below the four-year average.

Paine Field Community Quadrants

The graphic to the right depicts Paine Field's 16 noise quadrants. The red numbers within each quadrant represent how many calls were made from that quadrant in the month of April. "Unknown" represents complaints where the caller's quadrant was not identified. "Other" represents complaints from outside the four major quadrants.



Caller Complaints

Noise complaints are received via telephone hotline or through the airport web page noise complaint form .

Upon receipt, complaints are investigated. The FAA retains radar data for 3 days before providing it to the airport's AIRSCENE noise monitoring system. Airport staff uses the AIRSCENE data and other sources to help identify which operation generated the noise complaint.

The aircraft operator is then notified of the complaint and made aware of the airport's noise abatement program. Callers who specifically request to be contacted are called back.

Since FAA operations data is not released until the third week of the following month, the monthly

summary report is posted online (see *Online* on page 1) the fourth week of the following month.

Caller Identification Codes are listed in the first column of the complaint table. You should be able to identify yourself by the first 3 letters of your last name and the date and time you called in. If you are having trouble identifying your new code, please call the airport office and we will look you up.

First time callers will receive a one-time hard copy mailing of this monthly noise summary. After the initial mailing, future reports will be posted online at the websites listed on the front of this report. The aircraft operations listed on this page (and next) are presumed to have originated or completed their flights at Paine Field.

Caller Code	Offense Start	Flight Operation	Runway	Flight Id	Flight Equipment	Comments	Community
FIS001	4/2/2011 10:03	ARR	34L	N72AF	Galaxy Jet	Loud and Low	SE4
FIS001	4/2/2011 10:46	T & G	16R	BOE503	747-8	Extremely low over residence	SE4
FIS001	4/3/2011 11:16	DEP	16R	BOE503	747-8	Low and noise	SE4
WOO010	4/5/2011 9:21	n/a	n/a	Could not be traced	Could not be traced	Low, Noisy	NW4
KIP002	4/5/2011 21:08	n/a	n/a	Could not be traced	Could not be traced	Tired of listening to a twin engine turbo prop doing touch and go's.	
FIS001	4/6/2011 11:08	DEP	16R	BOE503	747-8	Low and noise	SE4
EDW003	4/6/2011 13:52	n/a	n/a	Could not be traced	Could not be traced	Outbound directly over our house	SW2
GIB001	4/7/2011 16:43	DEP	34L	N966H	FA7X	Low and Noise	SW4
GIB001	4/8/2011 14:40	ARR	34L	N2365C	C182	Low and extremely loud	SW4
FIS001	4/9/2011 10:11	DEP	16R	GTI4532	747-LCF	Low and noise	SE4
WOO010	4/12/2011 9:43	DEP	16R	BOE523	747-8	Low, Noisy	NW4
WOO010	4/12/2011 13:40	DEP	16R	GTI4532	747-LCF	Low, Noisy	NW4
WOO010	4/13/2011 12:54	Transitioning	n/a	ALFT6	EC35	Noisy	NW4
FIS001	4/14/2011 0:28	ARR	34L	ASA9002	737-400	Low and noise	SE4
FIS001	4/14/2011 11:14	DEP	16R	BOE523	747-8	Low and noise	SE4
EDW003	4/18/2011 10:19	DEP	16R	BOE274	767-300	Outbound directly over our house	SW2
BES002	4/19/2011 15:35	DEP	34L	AirPAC1	PA-34	Loud and Low	NW1
WOO010	4/20/2011 14:25	n/a	n/a	could not be traced	could not be traced	Noisy	NW4

Caller Complaints

Caller Code	Offense Start	Flight Operation	Runway	Flight Id	Flight Equipment	Comments	Community
SIR001	4/21/2011 6:43	n/a	n/a	could not be traced	Could not be traced	Exceptionally low	
WOO010	4/21/2011 14:25	DEP	16R	BOE001	787	Low, Noisy	NW4
FIS001	4/22/2011 11:51	ARR	34L	BOE241	737-800	Low, Noisy	SE4
FIS001	4/22/2011 12:02	DEP	16R	GTI4542	747-LCF	Loud and Low	SE4
FIS001	4/22/2011 12:36	DEP	16R	GTI4533	747-LCF	Loud and low	SE4
KUL001	4/23/2011 7:44	DEP	34L	N78860	M20P	Loud	NE1
Edw003	4/23/2011 12:00	n/a	n/a	Could not be traced	Could not be traced	Inbound	SW2
WOO010	4/23/2011 14:25	ARR	34L	ASA9203	737-400	Noisy	NW4
AND006	4/23/2011 16:35	n/a	n/a	Could not be traced	Could not be traced	Loud	SW3
POR001	4/23/2011 16:45	ARR	34L	BOE503	747-8	Loud	NW4
FIS001	4/26/2011 18:24	DEP	16R	GTI4512	747-LCF	Noisy and Low	SE4
JOH018							SW3
THO008	4/26/2011 9:15:00 to 22:47PM	ARR/DEP	16R	UNKNOWN	UNKN	VERY Low and Loud!	Oth
FUL002							Oth
REE009							Oth
AND020							Oth
FUL002							Oth
WAL013	4/30/2011 9:04	ARR	34L	UPS9420	757-200	Loud	