

MONTHLY OPERATIONS & NOISE SUMMARY

PAINE FIELD AIRPORT

MARCH 2011

ONLINE AT WWW.PAINEFIELD.COM

NOISE COMMENT FORM: [HTTP://WWW.PAINEFIELD.COM/NOISE/NOISEFORM.HTML](http://WWW.PAINEFIELD.COM/NOISE/NOISEFORM.HTML)

NOISE SUMMARY REPORTS: [HTTP://WWW.PAINEFIELD.COM/NOISE/NOISESUMMARY.HTML](http://WWW.PAINEFIELD.COM/NOISE/NOISESUMMARY.HTML)

PAINE FIELD HAPPENINGS: [HTTP://WWW.PAINEFIELD.COM/HAPPENINGS/HAPPENINGS.HTML](http://WWW.PAINEFIELD.COM/HAPPENINGS/HAPPENINGS.HTML)

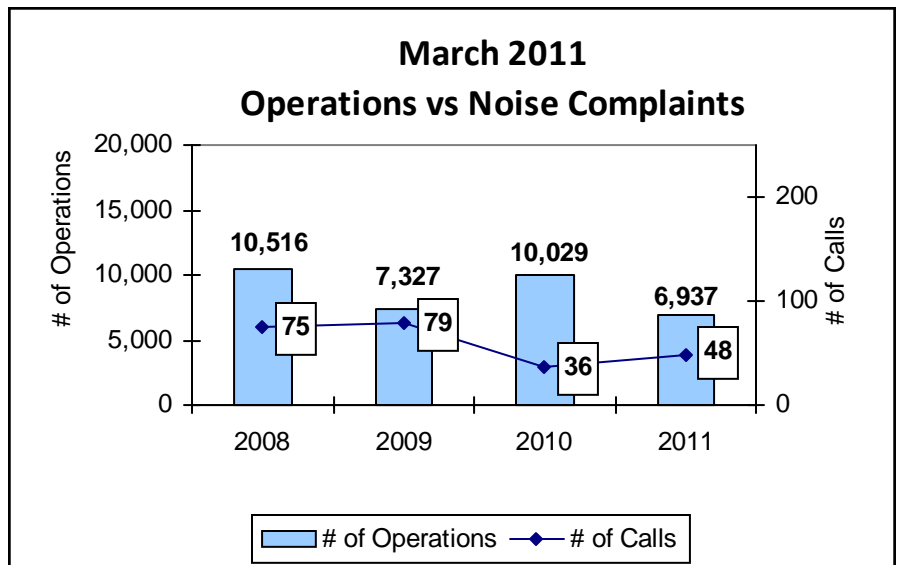
Over the course of the next several months, we may be changing a few graphs and tables to better reflect the information we think you might be interested in. Please be patient during this transition time. We have kept most of the data tables the same, and have added new information.

Noise Brief:

During March 2011, the airport office received 48 noise related calls and emails from individuals in the surrounding communities. All of the calls were regarding flight operations.

Complaints:

Many factors contribute to the amount of complaints received each month & by how many people. Complaint totals are rarely consistent due to factors ranging from one unusual flight event that generates multiple complaints from a large group of people, an overcast day which blocks in sound, or perhaps a new homeowner that didn't notice the flight paths before the purchase of the property.



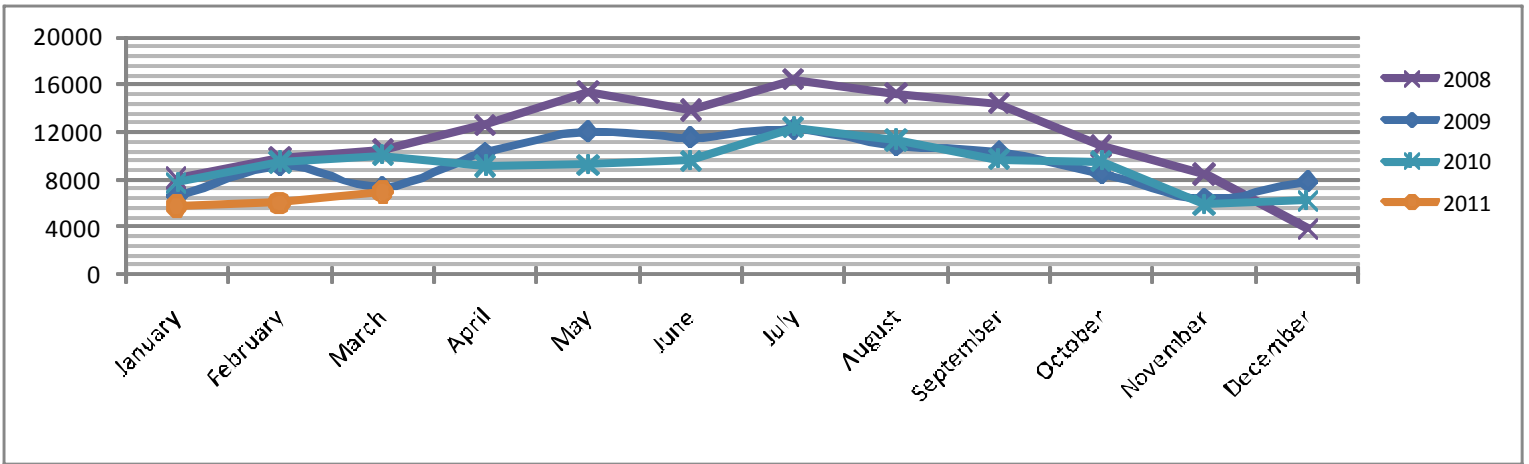
Airside Update for March

Runway 11-29 is closed for short term aircraft parking

**For further information on any of the above topics please call
airport operations at 425-388-5125**

**PAINE FIELD AIRPORT • 3220 100TH ST SW • EVERETT, WA 98204
NOISE HOTLINE: 425-353-2110 x1**

Monthly Operations Levels 2008–2011

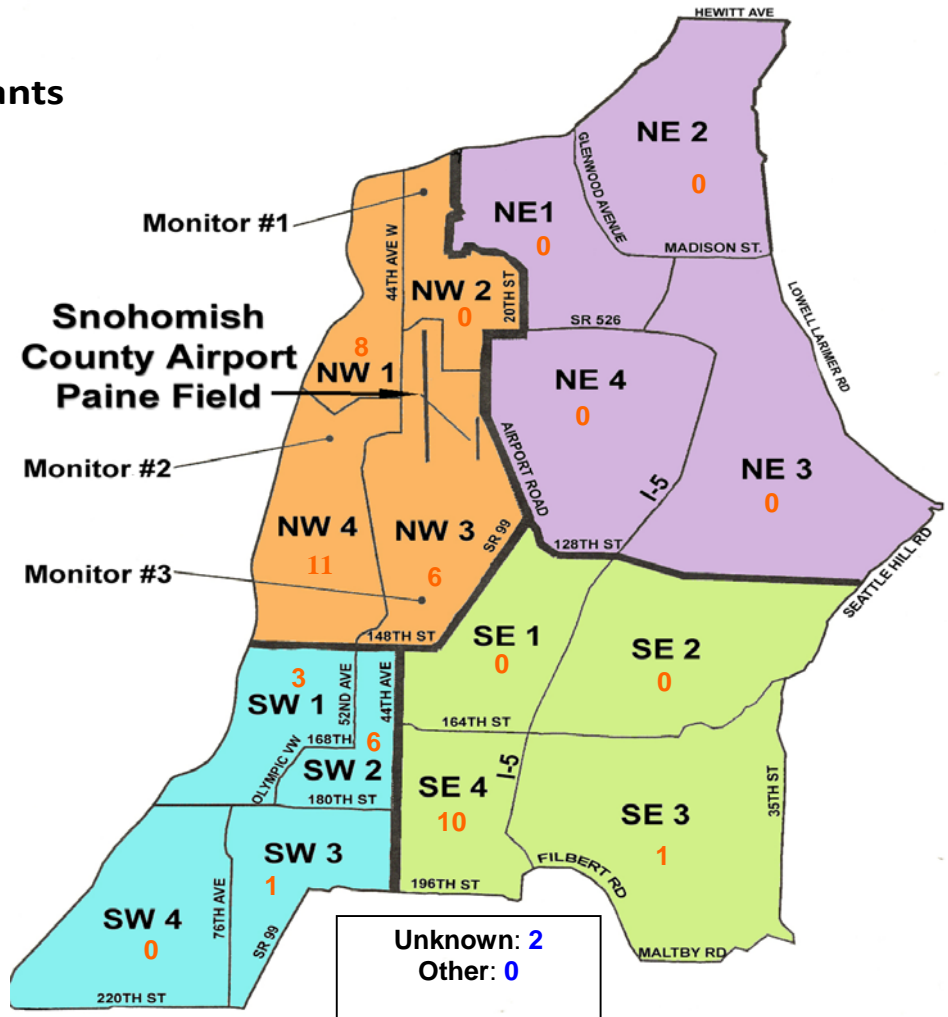


During March 2011, the FAA Paine Field Air Traffic Control Tower recorded 6,937 flight operations. This is a 31% decrease in operations from March 2010, which had 10,029 operations.

The four-year average number of flight operations for the month of March is 8,702. Total operations for March 2011 is 22% below the four-year average.

Paine Field Community Quadrants

The graphic to the right depicts Paine Field's 16 noise quadrants. The red numbers within each quadrant represent how many calls were made from that quadrant in the month of March. "Unknown" represents complaints where the caller's quadrant was not identified. "Other" represents complaints from outside the four major quadrants.



Caller Complaints

Noise complaints are received via telephone hotline or through the airport web page noise complaint form .

Upon receipt, complaints are investigated. The FAA retains radar data for 3 days before providing it to the airport's AIRSCENE noise monitoring system. Airport staff uses the AIRSCENE data and other sources to help identify which operation generated the noise complaint.

The aircraft operator is then notified of the complaint and made aware of the airport's noise abatement program. Callers who specifically request to be contacted are called back.

Since FAA operations data is not released until the third week of the following month, the monthly

summary report is posted online (see *Online* on page 1) the fourth week of the following month.

Caller Identification Codes are listed in the first column of the complaint table. You should be able to identify yourself by the first 3 letters of your last name and the date and time you called in. If you are having trouble identifying your new code, please call the airport office and we will look you up.

First time callers will receive a one-time hard copy mailing of this monthly noise summary. After the initial mailing, future reports will be posted online at the websites listed on the front of this report. The aircraft operations listed on this page (and next) are presumed to have originated or completed their flights at Paine Field.

Caller Code	Start Time, Date	Flight Operation	Runway	Call Sign	Aircraft Type	Comments	Quadrant
CHE003	3/5/2011 15:00	n/a	n/a	could not be traced	n/a	Made quite a racket. Seriously degrades the quality of life.	UNK
EDW003	3/6/2011 15:24	A	34L	BOE503	747-8	Inbound	SW2
FIS001	3/7/2011 11:07	T & G	16R	BOE616	737-800	Low and Loud	SE4
FIS001	3/7/2011 11:57	A	16R	BOE814	777-300	Low and Loud	SE4
FIS001	3/10/2011 10:23	D	16R	GTI4542	747-LCF	Low and Loud	SE4
FIS001	3/12/2011 17:41	D	16R	GTI4512	747-LCF	Low and noise - there is no excuse for how low this plane was except complete disregard by the FAA and PF Operations!	SE4
CRA001	3/13/2011 23:05	D	16R	GTI4522	747-LCF	Low and loud	NW1
FOS001							NW4
MIN003							NW1
LOV003							NW3
NIE001							SE3
FUS001							UNK
FIS001							SE4
HUX001	3/14/2011 16:03	D	16	RNGR763	P-3	Fly by twice, out of flight path	NW1

Caller Complaints

Caller Code	Start Time, Date	Flight Operation	Runway	Call Sign	Aircraft Type	Comments	Quadrant
WOO010	3/14/2011 16:19	n/a	n/a	could not be traced	n/a	n/a	NW4
ROU002	3/16/2011 3:00	n/a	n/a	could not be traced	n/a	Low and Loud	NW1
COD003	3/16/2011 03:30	D	16R	GTI4512	747-LCF	Low and Loud	NW3
RAP001							NW3
SWE006							SE1
TRE001							NW4
ING002							NW3
WOO010	3/16/2011 9:20	D	16R	BOE965	767-300	Noisy	NW4
JOH018	3/16/2011 18:56	D	16R	SWA8502	737-700	Excessive noise	SW3
WOO010	3/20/2011 9:05	T & G	16R	BOE001	787	Noisy	NW4
WOO010	3/20/2011 9:16	A	16R	BOE001	787	Noisy	NW4
EDW003	3/20/2011 13:50	n/a	n/a	could not be traced	n/a	Over house	SW2
EDW003	3/20/2011 14:05	n/a	n/a	could not be traced	n/a	Over house	SW2
BOV002	3/20/2011 14:08	n/a	n/a	could not be traced	n/a	Low and loud	SW1
EDW003	3/20/2011 14:15	A	34L	BOE134	777-300	Low and loud	SW2
BOV002	3/20/2011 14:20						SW1
WOO010	3/21/2011 10:21	D	16	SWA8501	737-300	Noisy	NW4
PLI001	3/21/2011 11:00	A	16R	N999SW	Beechcraft60	Low and Loud	NW1
PLI001	3/21/2011 12:10	D	16R	BOE503	747-8	Directly over our house. Is this a new flight path?	NW1
FIS001	3/23/2011 10:05	D	16R	FIV706	Cessna Citation	Low and loud	SE4
WOO010	3/23/2011 10:13	D	16R	GTI4542	747-LCF	Low and loud	NW4
FIS001	3/23/2011 10:13						SE4
WOO010	3/24/2011 11:13	n/a	n/a	could not be traced	n/a	Noisy	NW4
EDW003	3/24/2011 14:05	n/a	n/a	could not be traced	n/a	Outbound directly over house	SW2
STE001	3/24/2011 16:21	n/a	n/a	could not be traced	n/a	Low and loud	SW2
CON005	3/26/2011 03:00	A	16R	GTI4356	747-LCF	Low and Loud	NW1
WEE002	3/26/2011 04:00	D	16R	GTI4512	747-LCF	Low and Loud	NW3
CON005							NW1
RAP001							NW3
JAM004							SE4
FOS001							NW4
FIS001	3/26/2011 12:25	D	16R	BOE503	B747-8	Low and Loud	SE4
FIS001	3/26/2011 12:40	n/a	n/a	could not be traced	n/a	Low and Loud	SE4
DAR001	3/27/2011 21:37	D	16R	GTI4522	B747-LCF	Low and Loud	NW4