

Monthly Noise Summary

PAINE FIELD AIRPORT • 3220 100TH ST SW • EVERETT, WA 98204
NOISE HOTLINE: 425-353-2110 x1

NOVEMBER 2010

INSIDE THIS ISSUE:

Article	Page
Monthly Summary	
Recording Noise Complaints	1
Monthly Flight Operations	
Noise Complaints Filed by Noise Quadrant	2
Monthly Operations Levels	
Noise Complaints	3

NOVEMBER SUMMARY

During November 2010, the airport office received 30 noise related calls and emails from individuals in the surrounding communities. 29 of the calls were regarding flight operations. One of the calls was regarding an engine run.

Noise calls are received via telephone hotline (425-353-2110 x1) or through the airport web page noise complaint form (see *Online* below).

Upon receipt, complaints are investigated. The FAA retains radar data for 3 days before providing it to the airport's AIRSCENE noise monitoring system. Airport staff uses the AIRSCENE data and other sources to help identify which operation generated the noise complaint.

The aircraft operator is then notified of the complaint and made aware of the airport's noise abatement program. Callers who specifically request to be contacted are called back.

Since FAA operations data is not released until the third week of the following month, the monthly noise summary report is posted online (see *Online* below) the fourth week of the following month.

Page 2 shows a graphic representing the 16 noise sub-quadrants located around Paine Field. The graphic also depicts where Paine Field's three noise monitors are located.

Caller Identification Codes are listed on the front of the mailing envelope, preceding your name. Here you will find a your code to correlate with each complaint on pages 3 & 4 to identify the individuals who made each call.

First time callers will receive a one-time hard copy mailing of this monthly noise summary. After the initial mailing, future reports will be posted online at the websites listed below.

All of the aircraft operations listed on pages 3 and 4 are presumed to have originated or completed their flight at Paine Field.

Online at www.paineairport.com

Noise Comment form: <http://www.paineairport.com/noise/noiseform.html>

Noise Summary Reports: <http://www.paineairport.com/noise/noisesummary.html>

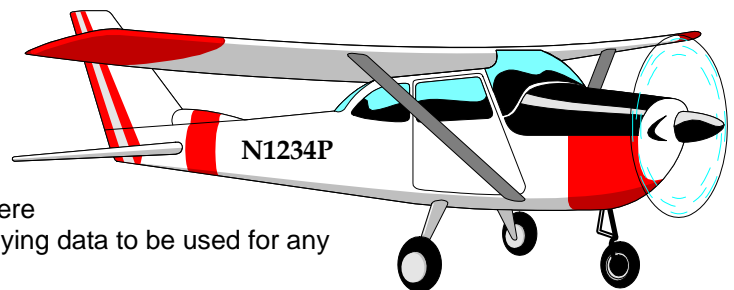
Paine Field Happenings: <http://www.paineairport.com/happenings/happenings.html>

RECORDING NOISE COMPLAINTS

Your noise calls are important to us. If there are flight operations taking place which are not ordinary, such as very low altitude operations, or repetitive overflights by jets, please do call in. However, if you see an ordinary aircraft taking off or landing, which seems to be abiding by reasonable standards, please be aware that the airport is here to accommodate aircraft. The airport is not collecting or tallying data to be used for any other purpose.

In filing a noise complaint, please include your name, address, phone number, Email & information pertaining to your concern. For those who have filed a noise complaint before, it is okay to just state your full name. The more complete your information, the better the chance of it being helpful in identifying the aircraft. Please make sure to include the date and time.

To help identify aircraft, please give a description of the aircraft (i.e. color, high-wing or low-wing, number of engines, and if possible please provide its "N" number) with the "N" number of N1234P. Direction of flight is also helpful.)

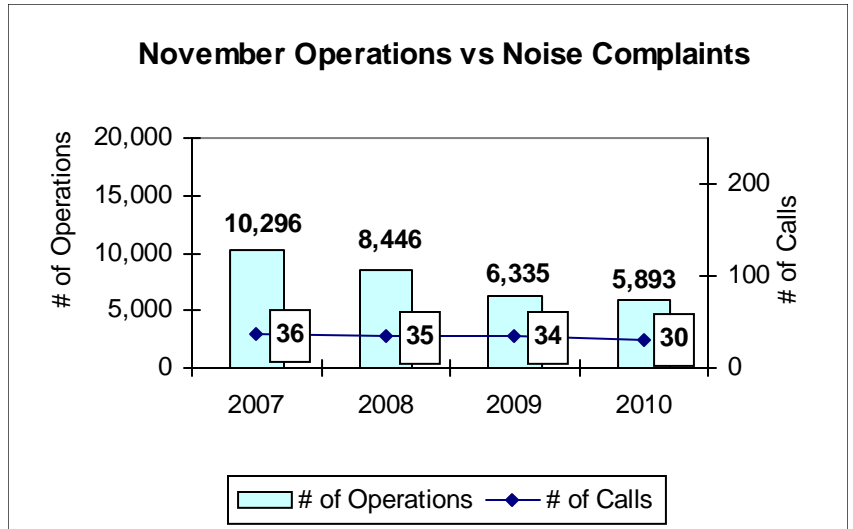


NOVEMBER 2010 MONTHLY FLIGHT OPERATIONS

During November 2010, the FAA Paine Field Air Traffic Control Tower recorded 5,893 flight operations. This is a 7% decrease in operations from November 2009, which had 6,335 operations.

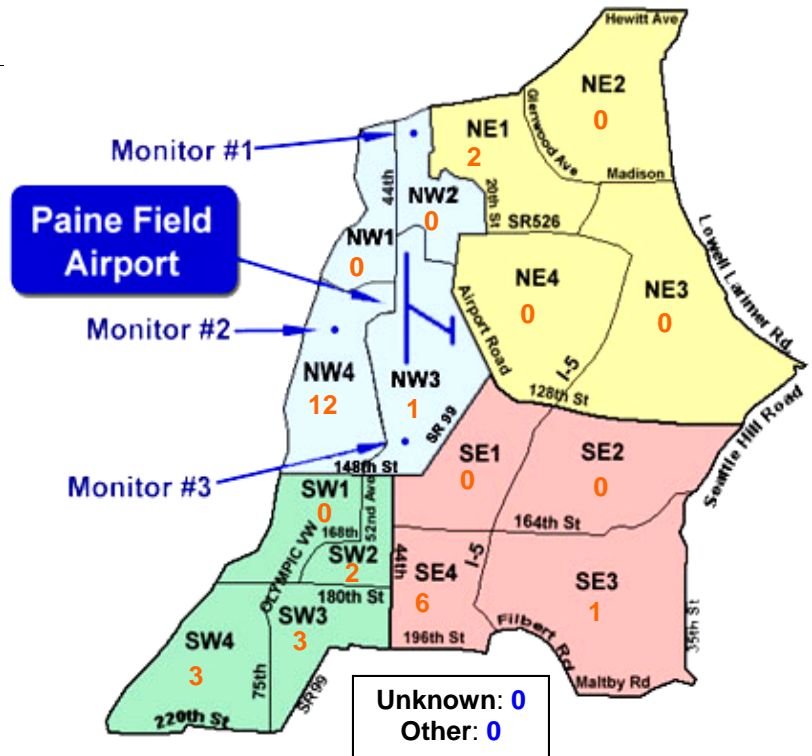
The four-year average number of flight operations for the month of November is 7,743. Total operations for November 2010 are 24% below the four-year average.

The graph shows operations compared to number of noise complaints for the years 2007, 2008, 2009 and 2010 during the month of November.

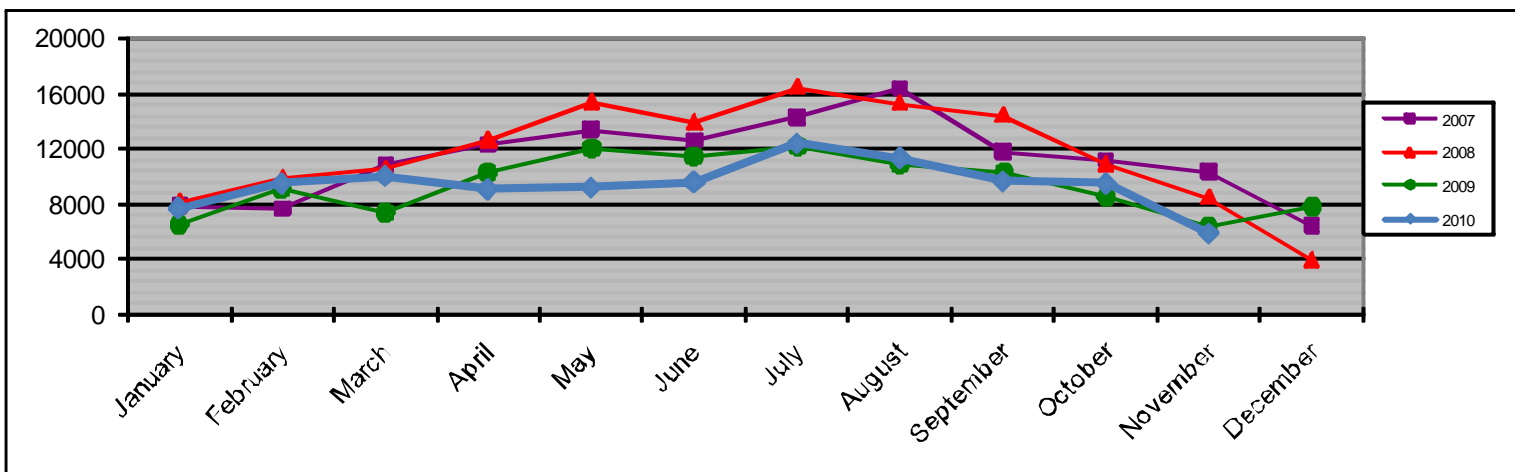


NOISE QUADRANTS

The graphic on the right depicts Paine Field's 16 noise quadrants and the locations of the three noise monitors. The red numbers within each quadrant represent how many calls were made from that quadrant in the month of November. "Unknown" represents complaints where the caller's address was not identified. "Other" represents complaints from outside the major quadrants.



MONTHLY OPERATIONS LEVELS 2007—2010



NOVEMBER 2010 NOISE COMPLAINTS

ID	Zone	Date	Time	N#	Aircraft	Activity	Traced To	Complaint
S070005	SW2	11/1/2010	14:22	BOE900	777-200	DEP 16R	Boeing	Low, Loud
W980009	NW4	11/2/2010	11:05	BOE128	777-300	DEP 16R	Boeing	Noisy
B100006	NE1	11/3/2010	15:28	BOE001	787	DEP 34L	Boeing	Why did he fly this direction?
D970007	NW4	11/3/2010	18:27	GTI4512	747-LCF	DEP 16R	Atlas Air/ Boeing	Extremely Loud, Low, Unacceptable
S090002	SE4							
F930013	SE4							
W980009	NW4	11/4/2010	09:50	BOE962	767-300	DEP 16R	Boeing	Noisy
S070005	SW2	11/7/2010	10:20	BOE962	767-300	ARR 16R	Boeing	Low, Loud
W980009	NW4							
S960003	NW4	11/8/2010	18:30	N520LL	BE-58 Beech Baron	ARR 16R	Private Owner	Loud and Low
S090002	SE4	11/8/2010	20:01	n/a	n/a	n/a	could not be traced	Loud, Low
W980009	NW4	11/10/2010	11:13	n/a	n/a	n/a	could not be traced	Noisy
W980009	NW4	11/11/2010	09:26	BOE970	777-300	DEP 16R	Boeing	Noisy
W980009	NW4	11/12/2010	09:50	BOE270	737-800	T & G 16R	Boeing	Noisy
G080000	SW4	11/12/2010	21:42	BOE270	737-800	T & G 16R	Boeing	Noisy
L100005	NW3	11/12/2010	22:00	n/a	n/a	n/a	General Noise Complaint	Excessive noise, late, flying directly
E070003	SE4	11/13/2010	13:40	BOE015	737-800	Missed 16R	Boeing	Outbound over house
J100001	SW3	11/14/2010	14:38	EVA5715	777-300	DEP 34L	Boeing/Eva Air	Noise, low flying
W980009	NW4	11/16/2010	09:34	BOE503	747-8	DEP 16R	Boeing	Noisy
E070003	SE4	11/16/2010	09:47	BOE503	747-8	DEP 16R	Boeing	Over house
K090006	NE1	11/16/2010	14:08	BOE017	737-800	T & G 16R	Boeing	Loud, low
W980009	NW4	11/19/2010	11:20	BOE128	737-800	T & G 16R	Boeing	Noisy
W980009	NW4	11/19/2010	11:35	BOE128	737-800	T & G 16R	Boeing	Noisy
W980009	NW4	11/19/2010	11:40	BOE128	737-800	ARR 34L	Boeing	Noisy
N050001	SE3	11/20/2010	16:17	EJA834	Challenger CL-560	ARR 34L	Private Owner	Too low
G080000	SW4	11/21/2010	12:58	BOE7874	787	ARR 34L	Boeing	Noisy
J950001	SW3							
J100001	SW3	11/21/2010	14:30	GTI4512	747-LCF	DEP 16R	Atlas Air/Boeing	Low, Loud
G080000	SW4							
F930013	SE4	11/23/2010	17:04	THY6900	777-300	DEP 16R	Turkish Airlines/ Boeing	Noisy, Low

This page intentionally left blank