

Monthly Noise Summary

PAINE FIELD AIRPORT • 3220 100TH ST SW • EVERETT, WA 98204
NOISE HOTLINE: 425-353-2110 x1

OCTOBER 2010

INSIDE THIS ISSUE:

Article	Page
Monthly Summary	
Recording Noise Complaints	1
Monthly Flight Operations	
Noise Complaints Filed by Noise Quadrant	2
Monthly Operations Levels	
Noise Complaints	3

OCTOBER SUMMARY

During October 2010, the airport office received 28 noise related calls and emails from individuals in the surrounding communities. All of the calls were regarding flight operations.

Noise calls are received via telephone hotline (425-353-2110 x1) or through the airport web page noise complaint form (see *Online* below).

Upon receipt, complaints are investigated. The FAA retains radar data for 3 days before providing it to the airport's AIRSCENE noise monitoring system. Airport staff uses the AIRSCENE data and other sources to help identify which operation generated the noise complaint.

The aircraft operator is then notified of the complaint and made aware of the airport's noise abatement program. Callers who specifically request to be contacted are called back.

Since FAA operations data is not released

until the third week of the following month, the monthly noise summary report is posted online (see *Online* below) the fourth week of the following month.

Page 2 shows a graphic representing the 16 noise sub-quadrants located around Paine Field. The graphic also depicts where Paine Field's three noise monitors are located.

Caller Identification Codes are listed on the front of the mailing envelope, preceding your name. Here you will find a your code to correlate with each complaint on pages 3 & 4 to identify the individuals who made each call.

First time callers will receive a one-time hard copy mailing of this monthly noise summary. After the initial mailing, future reports will be posted online at the websites listed below.

All of the aircraft operations listed on pages 3 and 4 are presumed to have originated or completed their flight at Paine Field.

Online at www.paineairport.com

Noise Comment form: <http://www.paineairport.com/noise/noiseform.html>

Noise Summary Reports: <http://www.paineairport.com/noise/noisesummary.html>

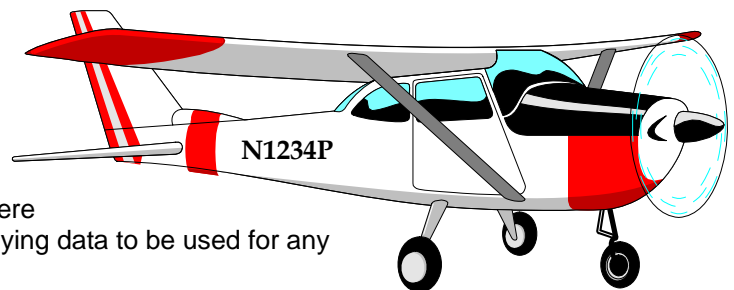
Paine Field Happenings: <http://www.paineairport.com/happenings/happenings.html>

RECORDING NOISE COMPLAINTS

Your noise calls are important to us. If there are flight operations taking place which are not ordinary, such as very low altitude operations, or repetitive overflights by jets, please do call in. However, if you see an ordinary aircraft taking off or landing, which seems to be abiding by reasonable standards, please be aware that the airport is here to accommodate aircraft. The airport is not collecting or tallying data to be used for any other purpose.

In filing a noise complaint, please include your name, address, phone number, Email & information pertaining to your concern. For those who have filed a noise complaint before, it is okay to just state your full name. The more complete your information, the better the chance of it being helpful in identifying the aircraft. Please make sure to include the date and time.

To help identify aircraft, please give a description of the aircraft (i.e. color, high-wing or low-wing, number of engines, and if possible please provide its "N" number) with the "N" number of N1234P. Direction of flight is also helpful.)

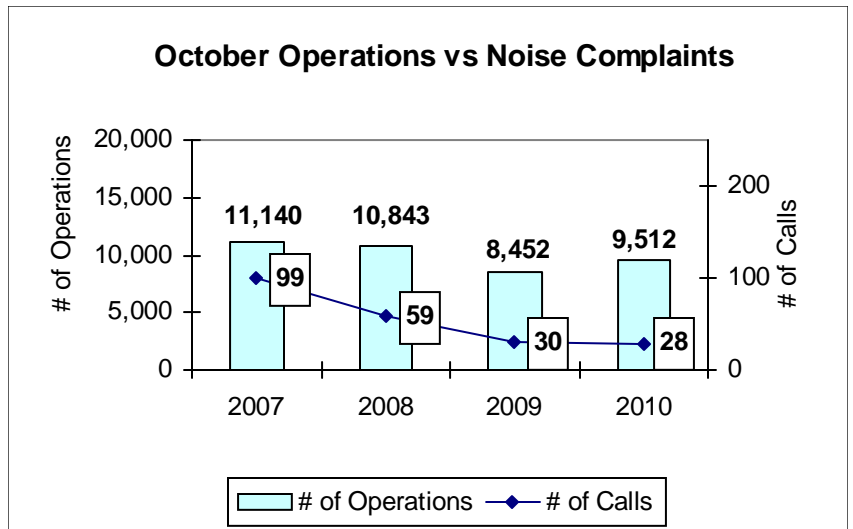


OCTOBER 2010 MONTHLY FLIGHT OPERATIONS

During October 2010, the FAA Paine Field Air Traffic Control Tower recorded 9,512 flight operations. This is a 13% increase in operations from October 2009, which had 8,452 operations.

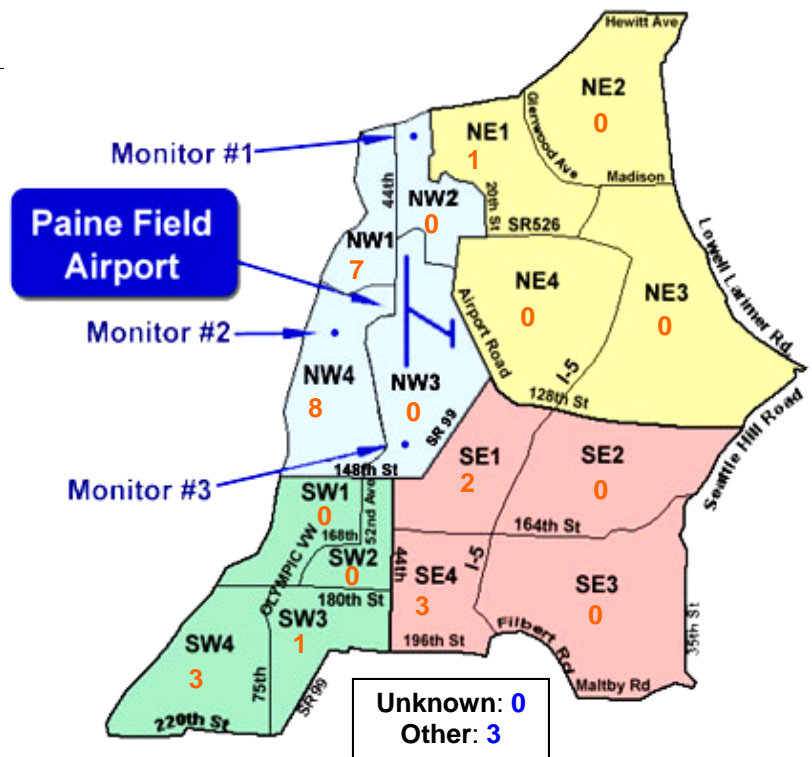
The four-year average number of flight operations for the month of October is 9,987. Total operations for October 2010 are 5% below the four-year average.

The graph shows operations compared to number of noise complaints for the years 2007, 2008, 2009 and 2010 during the month of October.

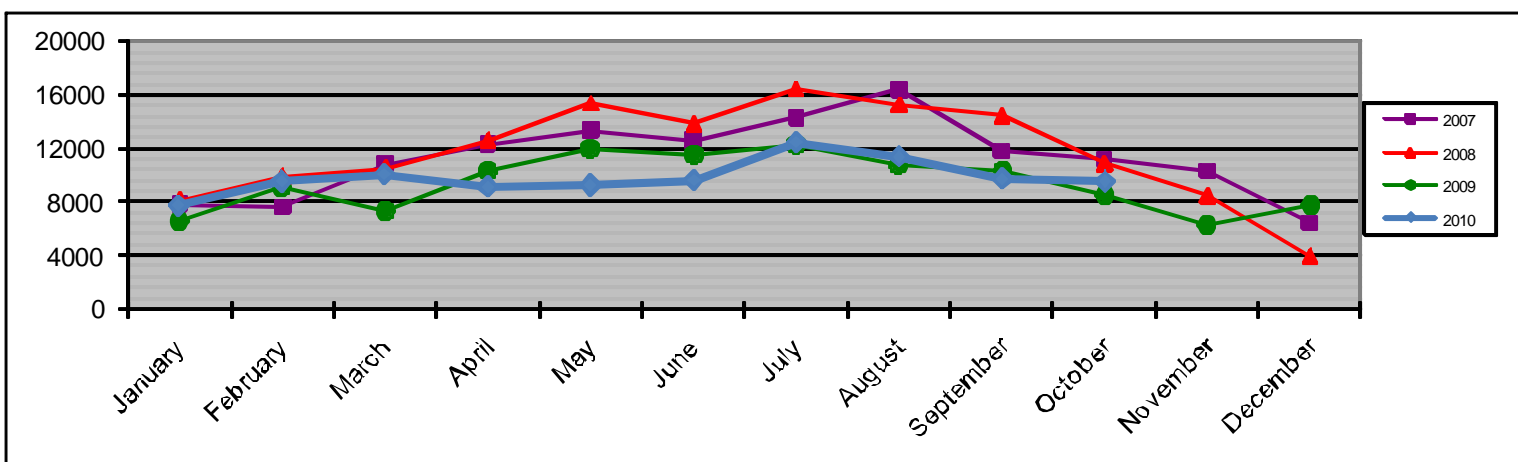


NOISE QUADRANTS

The graphic on the right depicts Paine Field's 16 noise quadrants and the locations of the three noise monitors. The red numbers within each quadrant represent how many calls were made from that quadrant in the month of October. "Unknown" represents complaints where the caller's address was not identified. "Other" represents complaints from outside the major quadrants.



MONTHLY OPERATIONS LEVELS 2007—2010



OCTOBER 2010 NOISE COMPLAINTS

ID	Zone	Date	Time	N#	Aircraft	Activity	Traced To	Complaint
Q920001	NW4	10/2/2010	00:03	SWA8505	737-700	DEP 16R	Southwest/ATS	Noisy
F930013	SE4	10/7/2010	09:24	BOE267	737-800	T & G 16R	Boeing	Noise, Low
A050003	SE1	10/8/2010	00:09	GTI4531	747-LCF	DEP 16R	Atlas Air/ Boeing	Very noisy, low
S100021	SE1							
R030003	NW1	10/8/2010	23:38	SWA8501	737-700	DEP 16R	Southwest/ATS	Loud, too late
M100007	NW4							
W100008	OTH	10/10/2010	00:05	GTI4351	747-LCF	ARR 34L	Atlas Air/ Boeing	Too low, out of flight path
F930013	SE4							
W980009	NW4	10/11/2010	09:13	BOE126	777-300	DEP 16R	Boeing	Noisy
G080000	SW4	10/12/2010	18:40	n/a	n/a	n/a	could not be traced	General complaint
P960008	SW4	10/12/2010	20:39	COUGAR77	could not be traced	Low APP 34L	Military	Really low, loud
F920008	OTH	10/15/2010	14:50	BOE211	737-700	DEP 34L	Boeing	Loud and intrusive
J950001	SW3	10/15/2010	15:32	BOE127	777-300	ARR 34L	Boeing	Very Low, Loud
L100001	NW1	10/15/2010	16:46	n/a	could not be traced	General Complaint	could not be traced	Very loud
L100001	NW1							
K100007	OTH	10/16/2010	01:02	n/a	could not be traced	n/a	could not be traced	Plane flying over neighborhood
W980009	NW4	10/17/2010	15:56	BOE503	747-8	DEP 16R	Boeing	Noisy
K100008	NW1	10/19/2010	12:00	n/a	General Complaint	n/a	could not be traced	Noise, too frequent
W980009	NW4	10/20/2010	10:20	GTI4532	747-LCF	DEP 16R	Atlas Air/Boeing	Noisy
G080000	SW4	10/22/2010	17:15	JAL7901	767-300	DEP 16R	Japan Airlines/Boeing	Noisy
F930013	SE4	10/23/2010	18:48	n/a	could not be traced	n/a	could not be traced	Noise low
W980009	NW4	10/27/2010	13:37	BOE051	737-800	T & G 16R	Boeing	Noisy
S090004	NW1	10/27/2010	18:26	GTI4512	747-LCF	DEP 34L	Atlas Air/Boeing	Low, Out of flight path, early turn
L960000	NE1							
S090004	NW1	10/28/2010	23:01	n/a	n/a	n/a	could not be traced	General complaint
W980009	NW4	10/31/2010	12:03	BOE962	767-300	T & G 16R	Boeing	Noisy
P070001	NW4	10/31/2010	15:50	n/a	could not be traced	n/a	could not be traced	Buzzed by planes
S100019	NW1	10/31/2010	16:00	n/a	could not be traced	n/a	could not be traced	Loud, repeated flyovers

Page intentionally left blank