

Monthly Noise Summary

PAINE FIELD AIRPORT • 3220 100TH ST SW • EVERETT, WA 98204
NOISE HOTLINE: 425-353-2110 x1

SEPTEMBER 2010

INSIDE THIS ISSUE:

Article	Page
Monthly Summary	
Recording Noise Complaints	1
Monthly Flight Operations	
Noise Complaints Filed by Noise Quadrant	2
Monthly Operations Levels	
Noise Complaints	3
Noise Complaints	4

SEPTEMBER SUMMARY

During September 2010, the airport office received 59 noise related calls and emails from individuals in the surrounding communities. All of the calls were regarding flight operations. None of the calls were regarding engine trims.

Noise calls are received via telephone hotline (425-353-2110 x1) or through the airport web page noise complaint form (see *Online* below).

Upon receipt, complaints are investigated. The FAA retains radar data for 3 days before providing it to the airport's AIRSCENE noise monitoring system. Airport staff uses the AIRSCENE data and other sources to help identify which operation generated the noise complaint.

The aircraft operator is then notified of the complaint and made aware of the airport's noise abatement program. Callers who specifically request to be contacted are called back.

Since FAA operations data is not released until the third week of the following month, the monthly noise summary report is posted online (see *Online* below) the fourth week of the following month.

Page 2 shows a graphic representing the 16 noise sub-quadrants located around Paine Field. The graphic also depicts where Paine Field's three noise monitors are located.

Caller Identification Codes are listed on the front of this mailing envelope, preceding your name. Here you will find a your code to correlate with each complaint on pages 3 & 4 to identify the individuals who made each call.

First time callers will receive a one-time hard copy mailing of this monthly noise summary. After the initial mailing, future reports will be posted online at the websites listed below.

All of the aircraft operations listed on pages 3 and 4 are presumed to have originated or completed their flight at Paine Field.

Online at www.paineairport.com

Noise Comment form: <http://www.paineairport.com/noise/noiseform.html>

Noise Summary Reports: <http://www.paineairport.com/noise/noisesummary.html>

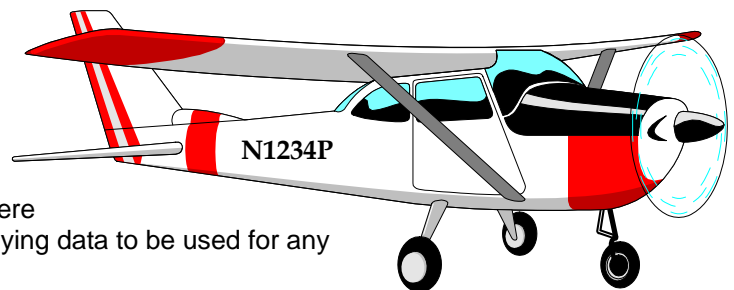
Paine Field Happenings: <http://www.paineairport.com/happenings/happenings.html>

RECORDING NOISE COMPLAINTS

Your noise calls are important to us. If there are flight operations taking place which are not ordinary, such as very low altitude operations, or repetitive overflights by jets, please do call in. However, if you see an ordinary aircraft taking off or landing, which seems to be abiding by reasonable standards, please be aware that the airport is here to accommodate aircraft. The airport is not collecting or tallying data to be used for any other purpose.

In filing a noise complaint, please include your name, address, phone number, Email & information pertaining to your concern. For those who have filed a noise complaint before, it is okay to just state your full name. The more complete your information, the better the chance of it being helpful in identifying the aircraft. Please make sure to include the date and time.

To help identify aircraft, please give a description of the aircraft (i.e. color, high-wing or low-wing, number of engines, and if possible please provide its "N" number) with the "N" number of N1234P. Direction of flight is also helpful.)

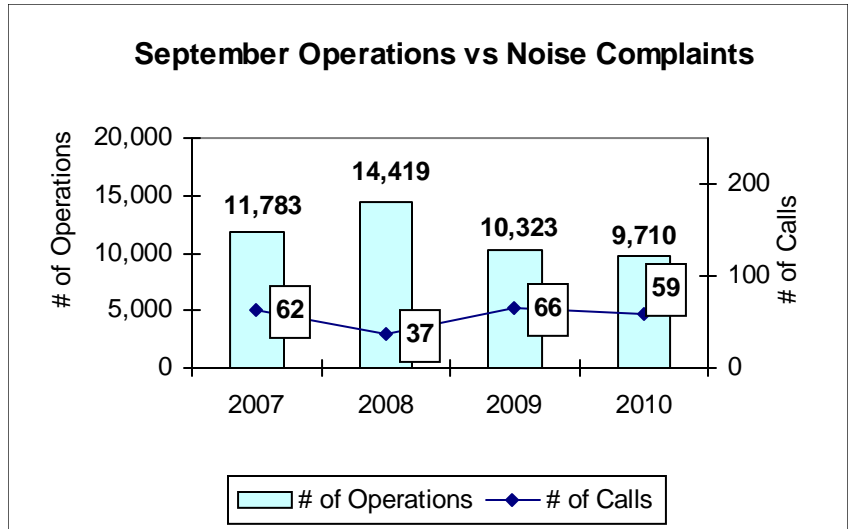


SEPTEMBER 2010 MONTHLY FLIGHT OPERATIONS

During September 2010, the FAA Paine Field Air Traffic Control Tower recorded 9,710 flight operations. This is a 6% decrease in operations from September 2009, which had 10,323 operations.

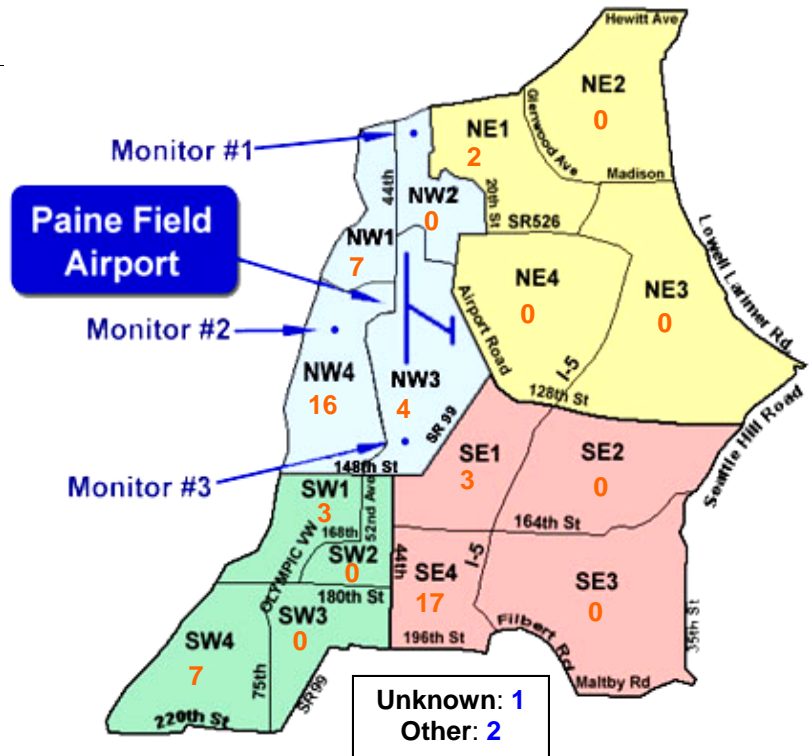
The four-year average number of flight operations for the month of September is 11,559. Total operations for September 2010 is 16% below the four-year average.

The graph shows operations compared to number of noise complaints for the years 2007, 2008, 2009 and 2010 during the month of September.

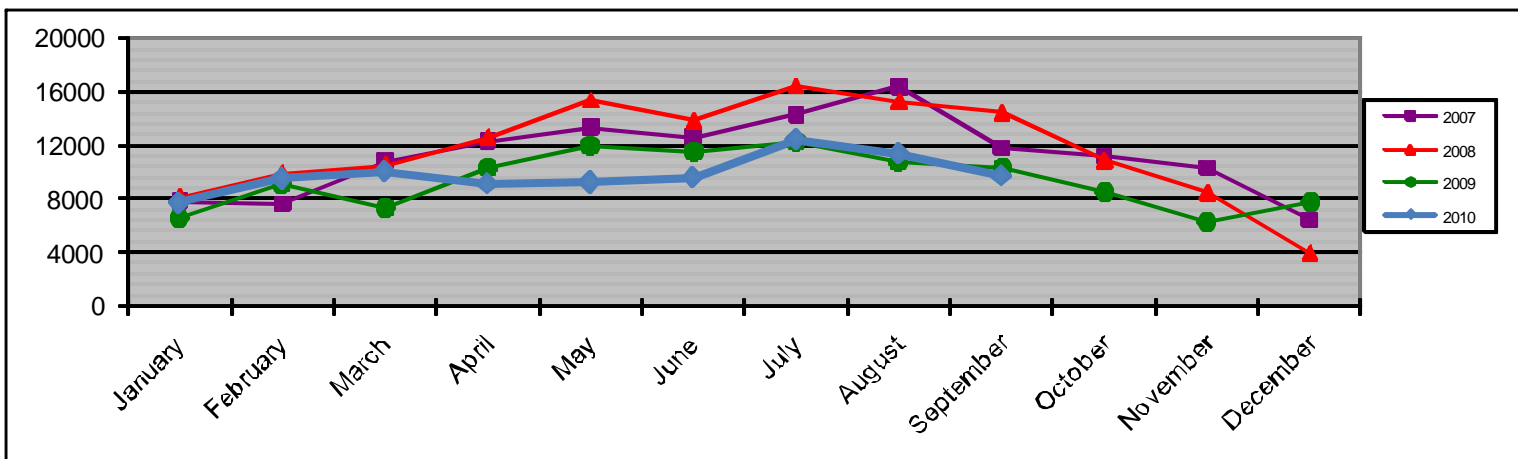


NOISE QUADRANTS

The graphic on the right depicts Paine Field's 16 noise quadrants and the locations of the three noise monitors. The red numbers within each quadrant represent how many calls were made from that quadrant in the month of September. "Unknown" represents complaints where the caller's address was not identified. "Other" represents complaints from outside the major quadrants.



MONTHLY OPERATIONS LEVELS 2007—2010



SEPTEMBER 2010 NOISE COMPLAINTS

ID	Zone	Date	Time	N#	Aircraft	Activity	Traced To	Complaint
P950006	NW1	9/1/2010	14:15	BOE091	777-200	ARR 34L	Boeing	Loud, Low,
W980009	NW4							
B920015	NW1							
X100002	NW4	9/1/2010	15:00	n/a	n/a	n/a	X	General Complaint
F930013	SE4	9/1/2010	18:00	BOE005	787-8	DEP 16R	Boeing	Low, Noisy
S060003	NW4	9/2/2010	22:00	N175BG	GLF3	DEP 34L	Private Owner	Loud, late
W980009	NW4	9/3/2010	10:03	BOE053	777-200	ARR 16R	Boeing	Low, Noisy
F930013	SE4							
F930013	SE4	9/3/2010	12:27	GTI4432	747-LCF	DEP 16R	Atlas Air/Boeing	Low, Noisy
X100001	NW4	9/4/2010	14:00	n/a	Various Vintage Aircraft	Pattern Work	Vintage Aircraft Weekend	They fly over residential areas, too low, too noisy, fly somewhere else, buzzing, go over the water
T100002	NW4							
W970005	NW1							
N960001	NW3							
I100000	NW3							
H050014	NE1							
W050009	NE1							
Z100001	NW4							
P950003	NW4							
S100019	NW1							
F930013	SE4	9/8/2010	01:47	ASA9001	737-200	DEP34L	Alaska Airlines/ATS	Low & Noisy
S050000	SE1	9/8/2010	08:30	GTI4512	747-LCF	DEP 16R	Atlas Air/Boeing	Low, Loud
W980009	NW4	9/9/2010	13:32	SWA8750	737-800	ARR 16R	Southwest/ATS	Noisy
T100002	NW4	9/11/2010	11:15	n/a	various	n/a	could not be traced	airplanes circling
C080003	NW1	9/11/2010	15:00	n/a	various	n/a	could not be traced	noise, cannot sit in peace
G080000	SW4	9/12/2010	23:55	n/a	n/a	n/a	could not be traced	Too loud
P960008	SW4	9/13/2010	16:51	n/a	n/a	n/a	could not be traced	Loud, low,
G080000	SW4	9/13/2010	16:52	GTI4151	747-LCF	ARR 34L	Atlas Air/Boeing	Too Loud
S090002	SE4	9/14/2010	09:17	BOE921	777-300	DEP 16R	Boeing	Very low, Noisy
F930013	SE4	9/14/2010	18:00	GTI4532	747-LCF	DEP 16R	Atlas Air/Boeing	Very low, noisy
G080000	SW4	9/17/2010	17:26	BOE895	777-300	ARR 16R	Boeing	Too Low, Close
W980009	NW4	9/20/2010	17:30	BOE882	777-300	Circle to Land 34L	Boeing	Low
S100018	NW4							
H970000	SW4							
D970007	NW4	9/20/2010	18:26	GTI4512	747-LCF	DEP 16R	Atlas Air/Boeing	Jet went by too loud
F930013	SE4							
F930013	SE4	9/21/2010	19:50	n/a	n/a	n/a	could not be traced	Noise
R070000	NW3	9/22/2010	05:00	GTI4533	747-LCF	DEP 16R	Atlas Air/Boeing	Too Loud
F100001								
G080000	SW4	9/22/2010	13:05	BOE951	767-300	DEP 16R	Boeing	Too low
R070000	NW3	9/22/2010	21:10	GTI4512	747-LCF	DEP 16R	Atlas Air/Boeing	Too Loud, flew over my house
D970007	NW4							
S070003	SE1							
B100005	SE1							
G080000	SW4							
O100001	OTH							
E070003	SE4							

SEPTEMBER 2010 NOISE COMPLAINTS

ID	Zone	Date	Time	N#	Aircraft	Activity	Traced To	Complaint
F930013	SE4	9/24/2010	07:46	N598MM	Pilatus PC-12	DEP 16R	Private Owner	Noise
F930013	SE4	9/25/2010	07:57	n/a	n/a	n/a	could not be traced	Noise, low
F930013	SE4	9/26/2010	14:41	n/a	n/a	n/a	could not be traced	Noise, low
W980009	NW4	9/26/2010	15:15	n/a	n/a	n/a	could not be traced	Very noise
F930013	SE4	9/27/2010	20:50	GTI4543	747-LCF	DEP 16R	Atlas Air/Boeing	Low, noise
F930013	SE4	9/28/2010	16:25	AME550	Piper PA 31 Navajo	ARR 34L	Ameriflight	Noise, low
F930013	SE4	9/28/2010	19:17	GTI4351	747-LCF	ARR 34L	Atlas Air/Boeing	Noise, Low
E070003	SE4	9/29/2010	12:55	BOE023	777-300	DEP 16R	Boeing	Outbound
P920005	NW1	9/30/2010	11:45	n/a	n/a	n/a	could not be traced	Noise
S100020	NW4	9/30/2010	12:45	n/a	Various	n/a	Could not be traced	For the past 10 minutes, plane circling
L100001	NW1	9/30/2010	14:12	n/a	n/a	n/a	could not be traced	n/a
F920008	OTH	9/30/2010	14:17	BOE023	777-200	DEP 34L	Boeing	Loud, and intrusive
E070003	SE4	9/30/2010	16:00	n/a	n/a	n/a	could not be traced	Inbound