

Monthly Noise Summary

PAINE FIELD AIRPORT • 3220 100TH ST SW • EVERETT, WA 98204
NOISE HOTLINE: 425-353-2110 x1

AUGUST 2010

INSIDE THIS ISSUE:

Article	Page
Monthly Summary	
Recording Noise Complaints	1
Monthly Flight Operations	
Noise Complaints Filed by Noise Quadrant	2
Monthly Operations Levels	
Noise Complaints	3
Noise Complaints	4

AUGUST SUMMARY

During August 2010, the airport office received 66 noise related calls and emails from individuals in the surrounding communities. All 66 of the calls were regarding flight operations. None of the calls were regarding engine trims.

Noise calls are received via telephone hotline (425-353-2110 x1) or through the airport web page noise complaint form (see *Online* below).

Upon receipt, complaints are investigated. The FAA retains radar data for 3 days before providing it to the airport's AIRSCENE noise monitoring system. Airport staff uses the AIRSCENE data and other sources to help identify which operation generated the noise complaint.

The aircraft operator is then notified of the complaint and made aware of the airport's noise abatement program. Callers who specifically request to be contacted are called back.

Since FAA operations data is not released until the third week of the following month, the monthly noise summary report is posted online (see *Online* below) the fourth week of the following month.

Page 2 shows a graphic representing the 16 noise sub-quadrants located around Paine Field. The graphic also depicts where Paine Field's three noise monitors are located.

Caller Identification Codes are listed on the front of this mailing envelope, preceding your name. Here you will find a your code to correlate with each complaint on pages 3 & 4 to identify the individuals who made each call.

First time callers will receive a one-time hard copy mailing of this monthly noise summary. After the initial mailing, future reports will be posted online at the websites listed below.

All of the aircraft operations listed on pages 3 and 4 are presumed to have originated or

Online at www.paineairport.com

Noise Comment form: <http://www.paineairport.com/noise/noiseform.html>

Noise Summary Reports: <http://www.paineairport.com/noise/noisesummary.html>

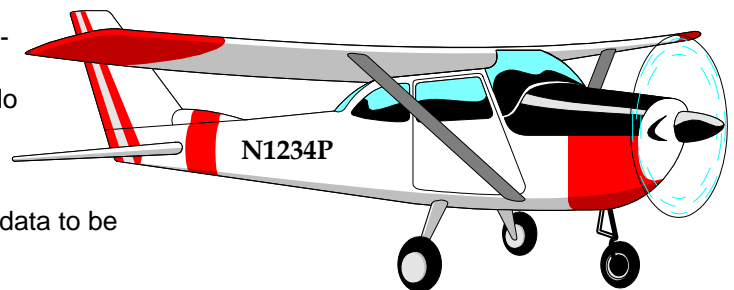
Paine Field Happenings: <http://www.paineairport.com/happenings/happenings.html>

RECORDING NOISE COMPLAINTS

Your noise calls are important to us. If there are flight operations taking place which are not ordinary, such as very low altitude operations, or repetitive overflights by jets, please do call in. However, if you see an ordinary aircraft taking off or landing, which seems to be abiding by reasonable standards, please be aware that the airport is here to accommodate aircraft. The airport is not collecting or tallying data to be used for any other purpose.

In filing a noise complaint, please include your name, address, phone number, Email & information pertaining to your concern. For those who have filed a noise complaint before, it is okay to just state your full name. The more complete your information, the better the chance of it being helpful in identifying the aircraft. Please make sure to include the date and time.

To help identify aircraft, please give a description of the aircraft (i.e. color, high-wing or low-wing, number of engines, and if possible please provide its "N" number) with the "N" number of N1234P. Direction of flight is also helpful.)

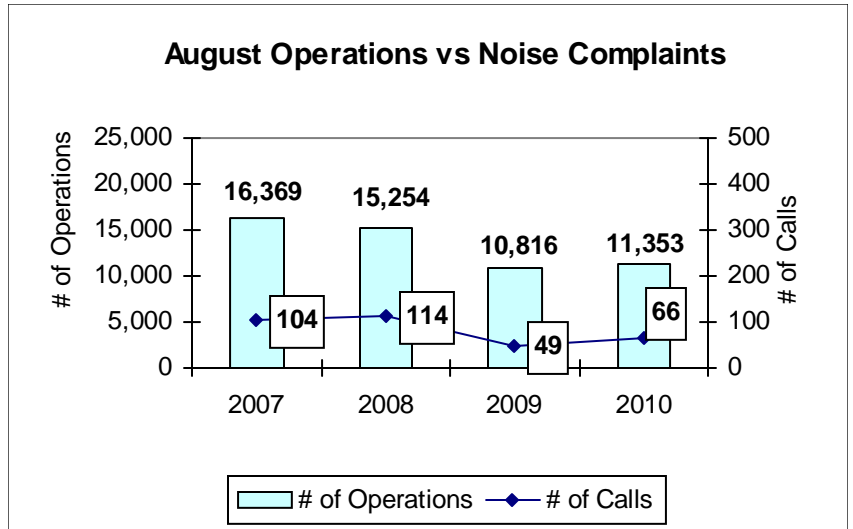


AUGUST 2010 MONTHLY FLIGHT OPERATIONS

During August 2010, the FAA Paine Field Air Traffic Control Tower recorded 11,353 flight operations. This is a 5% increase in operations from August 2009, which had 10,816 operations.

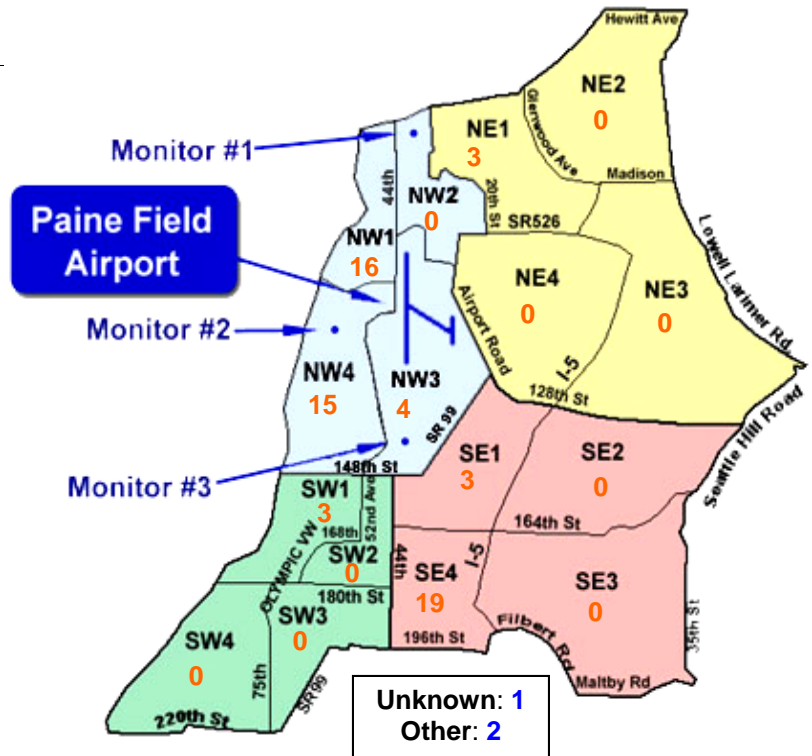
The four-year average number of flight operations for the month of August is 13,348. Total operations for August 2010 is 16% below the four-year average.

The graph shows operations compared to number of noise complaints for the years 2007, 2008, 2009 and 2010 during the month of August.

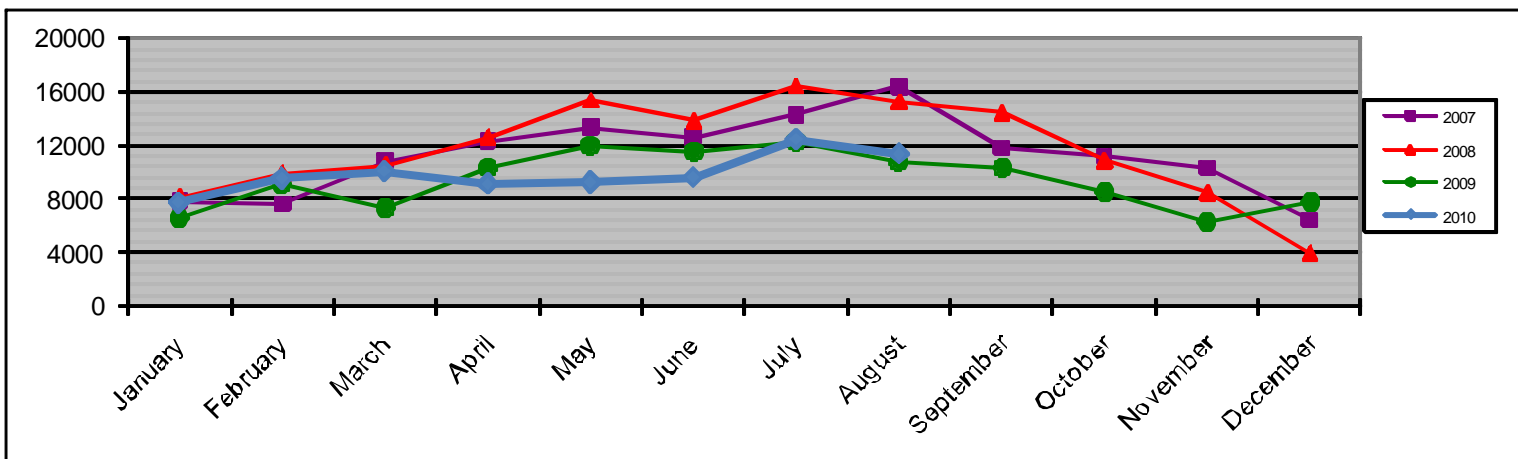


NOISE QUADRANTS

The graphic on the right depicts Paine Field's 16 noise quadrants and the locations of the three noise monitors. The red numbers within each quadrant represent how many calls were made from that quadrant in the month of August. "Unknown" represents complaints where the caller's address was not identified. "Other" represents complaints from outside the major quadrants.



MONTHLY OPERATIONS LEVELS 2007—2010



AUGUST 2010 NOISE COMPLAINTS

ID	Zone	Date	Time	N#	Aircraft	Activity	Traced To	Complaint
F930013	SE4	8/2/2010	17:03	BOE003	787	ARR 34L	Boeing	Low & Noisy
S050000	SE1	8/2/2010						
E070003	SE4	8/2/2010						
S050000	SE1	8/4/2010	12:11	BOE051	777-200	ARR 34L	Boeing	Extremely low, and loud
C060010	NW1	8/5/2010	15:30	n/a	n/a	n/a	could not be traced	Loud & Low
I100000	NW3	8/5/2010	20:59	ASA9327	737-800	DEP 34L	Alaska/ATS	Too late
P100002	NW4	8/5/2010	21:00	HOOKER01	CH-47 Chinook	Pattern Work	Army	Loud & Low
I100000	NW3	8/5/2010						
O100000	NW1	8/5/2010						
W980009	NW4	8/7/2010	13:56	BOE836	737-800	DEP 34L	Boeing	Noisy
F930013	SE4	8/10/2010	10:16	CCK588	777-200	DEP 16R	Cargo King/Boeing	Low & Noisy
S100014	OTH	8/10/2010	17:29	GIANT4251	747-LCF	ARR 34L	Atlas Air/Boeing	Loud & Low
W980009	NW4	8/11/2010	11:45	GIANT4531	747-LCF	DEP 16R	Atlas Air/Boeing	Noisy
F930013	SE4	8/11/2010						
L100004	OTH	8/12/2010	05:00	n/a	n/a	n/a	could not be traced	Low, loud & early
C040007	NW1	8/13/2010	00:01	n/a	n/a	n/a	could not be traced	Loud, low
F930013	SE4	8/13/2010	08:20	FDX9199	777-200	DEP 16R	Fed Ex/Boeing	Low & Noisy
W980009	NW4	8/13/2010	14:09	BOE636	737-800	T & G 16R	Boeing	Noisy
W980009	NW4	8/13/2010						
C100003	UNK	8/13/2010	23:54	n/a	military helicopter	n/a	could not be traced	Helicopter flyer over, obnoxious
K100006	NW1	8/14/2010						
B080007	NW1	8/14/2010						
W100006	SE1	8/14/2010						
S100017	NW1	8/14/2010						
W980009	NW4	8/14/2010	16:57	BOE020	777-200	Low APP 16R	Boeing	Noisy
W980009	NW4	8/16/2010	13:55	BOE091	777-200	Low APP 16R	Boeing	Noisy
F100000	NE1	8/17/2010	02:20	n/a	n/a	n/a	could not be traced	Loud & Late Night
C010010	NW1	8/17/2010	05:12	GIANT4512	747-LCF	DEP 34L	Atlas Air/Boeing	Too Loud, time limits for takeoffs?
H960012	NW1	8/17/2010						
B050020	NW1	8/17/2010						
K980007	NW1	8/17/2010						
S100015	NW1	8/17/2010						
S100016	NW4	8/17/2010						
L070001	NW1	8/17/2010						
M070001	SE4	8/17/2010						

AUGUST 2010 NOISE COMPLAINTS

ID	Zone	Date	Time	N#	Aircraft	Activity	Traced To	Complaint
F100000	NE1	8/17/2010	06:00	n/a	n/a	n/a	could not be traced	Loud & Early Morning
C040007	NW1	8/17/2010	15:15	GIANT4512	747-LCF	DEP 34L	Atlas Air/Boeing	Low, Noisy
W980009	NW4	8/18/2010	13:55	n/a	n/a	n/a	could not be traced	Noisy
F930013	SE4	8/22/2010	23:00	GIANT4351	747-LCF	ARR 34L	Atlas Air/Boeing	Low & Noisy
C080002	SE4	8/22/2010						
E980001	NW3	8/22/2010						
G100001	SW1	8/23/2010	10:14	BOE951	767-300	Missed APP 16R	Boeing	Noisy
G100001	SW1	8/23/2010	10:19	n/a	n/a	n/a	could not be traced	Noisy
G100001	SW1	8/23/2010	10:24	GIANT4542	747-LCF	DEP 16R	Atlas Air/Boeing	Noisy
F930013	SE4	8/23/2010	19:51	GIANT4433	747-LCF	ARR 34L	Atlas Air/Boeing	Low & Noisy
C080002	SE4							
C080002	SE4	8/23/2010	21:00	COUGAR77	UH-60 Huey	Low APP 34L	Army	Too Low
F930013	SE4	8/24/2010	11:44	BOE052	777-200	ARR 34L	Boeing	Low & Noisy
E070003	SE4	8/25/2010	14:30	n/a	n/a	n/a	could not be traced	Inbound
F930013	SE4	8/25/2010	19:20	SWA8700	737-300	ARR 34L	Southwest/ATS	Low & Noisy
B100004	NW4	8/27/2010	14:00	HFF Flight	Tiger Cat/ Thunder Bolt	Pattern Work	Historic Flight	Continual fly bys
K980006	NW4							
F930013	SE4	8/27/2010	17:43	BOE005	787	ARR 34L	Boeing	Low & Noisy
F930013	SE4	8/27/2010	23:38	SWA8504	737-700	ARR 34L	Southwest/ATS	Low & Noisy
F930013	SE4	8/28/2010	12:13	BOE002	787	ARR 34L	Boeing	Low & Noisy
D970007	NW4	8/28/2010	12:36	FHC1	Various Aircraft	Pattern Work	Vintage Aircraft Weekend	Low, Noisy, Buzzy, Too much noise
M100006	NW4							
P920005	NW1							
W010001	NW3							
D970007	NW4							
M950011	NW4							
G100002	NW1							
F930013	SE4	8/28/2010	18:53	n/a	n/a	n/a	could not be traced	Low, Noisy
F930013	SE4	8/28/2010	20:42	n/a	n/a	n/a	could not be traced	Low, Noisy
I100001	NE1	8/28/2010	23:50	ASA9002	737-700	DEP 34L	Alaska/ATS	Loud & Low
G100006	NW1	8/29/2010	11:07	n/a	n/a	n/a	could not be traced	A lot of hot dogging, to much noise