

— PAE FREQUENCIES —

	VHF	UHF
ATIS	128.65	387.0
Tower	West 132.95/East 120.2	287.9
Ground	121.8	339.8
Clearance Delivery	126.75	
Seattle Center	128.5	306.9
Ramp	122.85	
VOR/DME	110.6	
ILS	109.3	
NDB	396	
FSS(SeattleRadio)	122.55	

— RUNWAYS —

Identifier	Length	Pavement	Lighting
16R-34L	9010 x 150	GRVD ASPH/CONC	HIRL
16R			MALSR PAPI
34L			MALSF PAPI
11-29	4504 x 75	Asphalt	MIRL VASI
16L-34R	3000 x 75	Asphalt	MIRL REILS PAPI

— GENERAL INFORMATION —

Elevation	606'
<b>Traffic Pattern Altitude</b>	
Small Propeller Aircraft	1600' MSL
Jet, Turboprop & Large Propeller Aircraft	2000' MSL
Magnetic Variation	19° 17' East
Services	Major/Minor
Air Traffic Control Hours	0700-2100 Local

AIR OPERATIONS AREAS - Restricted Access

*Movement Areas - Tower Clearance Required. Non-movement Areas- Authorized Access Only*

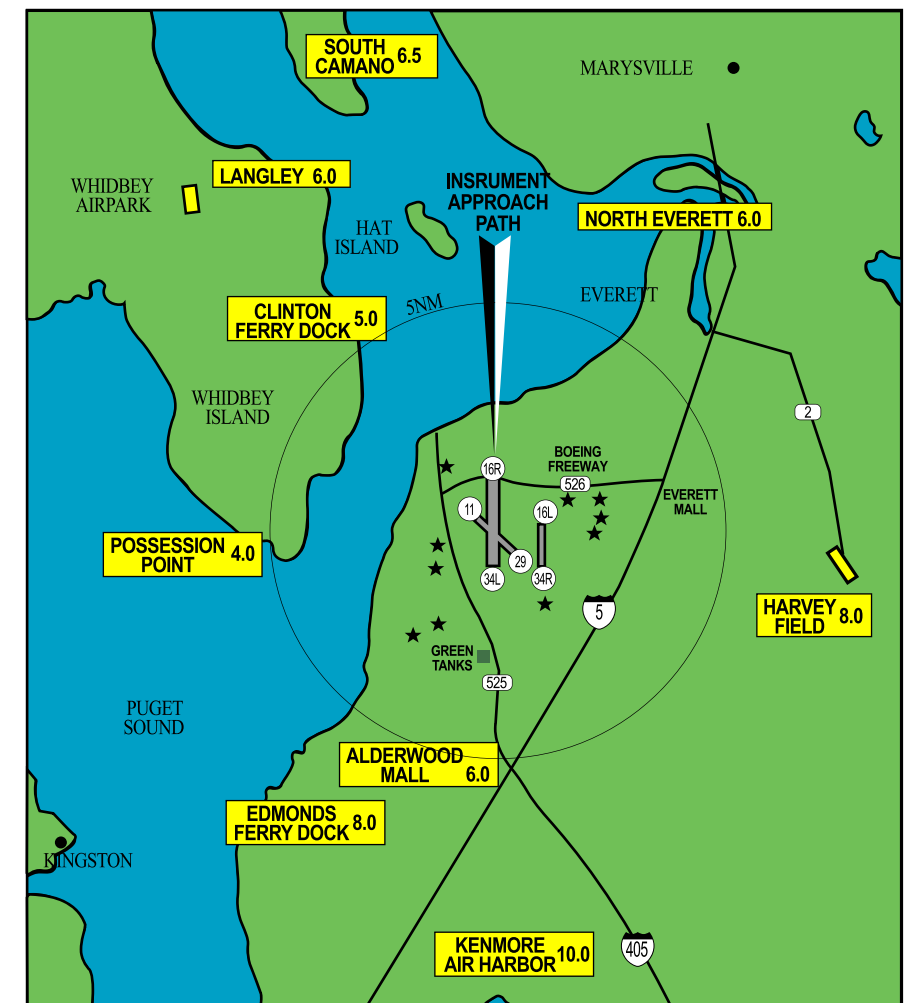
■ Movement Areas    
 ■ Ramps

- |  |                                 |
|--|---------------------------------|
| ⊗ Compass Rose                             | ⊕ Wash Rack                     |
| T Transient Parking, Aircraft under 12,500 | ⊙ VOR Check Point               |
| T Transient Parking, Aircraft over 12,500  | ⊕ Airport Reference Point (ARP) |
| ● Business Locator Number                  | Latitude 47° 54' 25.388"        |
| ⌚ Flight Planning Room                     | Longitude 122° 16' 53.816"      |
| ⚡ Official Lighted Windsock                |                                 |



**PAINE FIELD**  
Snohomish County Airport

**TRAFFIC AREA MAP  
AND  
NOISE ABATEMENT PROCEDURES**



ENTER THE TRAFFIC PATTERN AT OR ABOVE 1600' MSL

  REPORTING POINTS    
 ★ SCHOOLS    
 Revision: February, 2010



## PAINE FIELD - SNOHOMISH COUNTY AIRPORT

3220 100TH ST SW STE A (425) 388-5125 telephone  
EVERETT, WASHINGTON 98204 (425) 355-9883 fax  
All phone numbers are area code 425 unless otherwise noted.

AIRPORT ADMINISTRATION	MAP ID	PHONE
Airport Administration Office	7	388-5125
Airport Operations	7	388-5110
Airport Fire Department	3	388-5480
Airport Maintenance Department	16	388-5490

### FEDERAL AVIATION ADMINISTRATION & US CUSTOMS

FAA Air Traffic Control Tower	6	923-1400
Paine Field ATIS		355-9797
Seattle Flight Service Station		(877) 487-2799
U.S. Customs		259-0246

### AIR TRANSPORT MANUFACTURING AND REPAIR

ATS	8	347-3030
-----	---	----------

### AIRCRAFT MAINTENANCE AND SERVICE

Boundary Layer Research	10	353-6591	Vortex Generators & Winglets
Cannon Aircraft Interiors	11	348-6924	Aircraft Interiors
Crown Aviation	14	355-4088	Aircraft & Avionics Inspection, Modification & Repair
Castle & Cooke Aviation	5	355-6600	Aircraft Parking & Ramp Services
Precision Engines	7	347-2800	Radial Engine Overhaul & Fuel Control Manufacturing
Regal Air	13	353-9123	Aircraft Inspection, Repair & Oxygen Services
Sunquest Air Specialties	12	355-4516	Aircraft Painting
Nash Creek Aviation	18	348-4626	Hangar, office & manufacturing sublease

### AIRCRAFT RENTAL, FLIGHT INSTRUCTION, CHARTER/SCENIC FLIGHTS AND PILOT SUPPLIES

Northway Aviation	11	742-7003
Regal Air	13	353-9123

### FUEL AND SERVICE

Castle & Cooke Aviation	5	355-6600	100LL/Jet A	UNICOM	122.95
Castle & Cooke Aviation Self-Serve	13	355-6600	100LL/Jet A	UNICOM	122.95
Regal Air	13	353-9123	100LL	UNICOM	123.30
Hilton Garden Inn	2	423-9000			
Enterprise Rent-A-Car	5	438-0322			

### ATTRACTIONS

Future of Flight Aviation Center	1	438-8100
Boeing Company Tour Center	1	(800) 464-1476
Everett Comm. College Aviation Dept	4	388-9533
Museum of Flight Restoration Center	9	745-5150
Legend Flyers (ME 262 Project)	15	290-7878
Flying Heritage Collection	17	(877) FHC-3404
Historic Flight Foundation	19	(206) 587-4040

## NOISE ABATEMENT PROCEDURES FOR ALL AIRCRAFT

Noise abatement procedures are designed to minimize exposure of residential areas to aircraft noise, while ensuring safety of flight operations. There are communities surrounding the airport which are noise sensitive. We want to minimize the noise impacts on these communities. The procedures described herein are intended for noise abatement procedures and are subject to air traffic control and pilot discretion for reasons of safety.

## SMALL PROPELLER AIRCRAFT

(Single and twin engine under 12,500 pounds)

- Avoid overflights of school sites (shown on map).
- Aircraft with engines rated over 250 total horsepower are requested to use Runway 16R-34L except itinerant operations as noted below.

### Approaches:

- Itinerant arrivals and low approaches of small aircraft over 250 horsepower are authorized on Runways 29, 16L and 34R.
- Enter Class D Airspace from the suggested reporting points as shown on the map at or above 1600' MSL.
- Runway 16R-34L, Runway 16L-34R, Runway 11-29: Remain as high as practical until intercepting the VASI, PAPI or glide slope unless otherwise directed by ATC.

### Departures:

- Itinerant departures allowed on Runways 11-29 and 34R with ATC permission, itinerant departures from Runway 29 should proceed with a 50 degree north turn over 34L.
- On initial climb-out, fly runway heading to 1100' MSL or higher before turning, unless otherwise directed by ATC.
- Runway 16L-34R and Runway 11-29: Avoid intersection departures except for Runway 11 at D1.
- Maintain 1600' MSL or higher until leaving the Class D Airspace.

## JET, TURBOPROP & LARGE PROPELLER AIRCRAFT

### Use Runway 16R-34L:

- Touch and go operations and repetitive training flights are discouraged.
- Runway 34L departures are discouraged in calm wind conditions.

### Approaches:

- Standard NBAA/Aircraft Operating Manual noise abatement procedures should be used.
- Practice IFR approaches during VMC.
- Circle to land maneuvers are discouraged.
- Missed approach instructions will be assigned by ATC.

### VFR Approaches:

- Downwind should be flown mid-channel.

### Departures (IFR or VFR):

- Intersection takeoffs are discouraged.
- Standard NBAA/Aircraft Operating Manual noise abatement procedures should be used.
- Runway 34L: Avoid turns before reaching the shoreline at 2.5 DME.
- Runway 16R: Avoid turns until reaching 3000' MSL.

## ROTARYWING AIRCRAFT

- **Military**-Contact Airport Operations for military procedures.
- **Civilian**- Contact Air Traffic Control for takeoff and landing procedures.

## OPERATIONS WITH ATC TOWER CLOSED

- Announce intentions on CTAF 132.95.
- Runways 11-29 and 16L-34R closed.
- **Caution for converging traffic on base to final legs to Runway 16R - 34L.**
  - Large aircraft fly a west pattern to 16R or 34L over the water.
  - Small aircraft fly east pattern on 16R or 34L.
- Intersection departures and repetitive training operations are discouraged.
- PPR for Air Carrier Aircraft 2100-0700 local (388-5110 or 388-5480).