



www.paineairport.com

# PAINIE FIELD

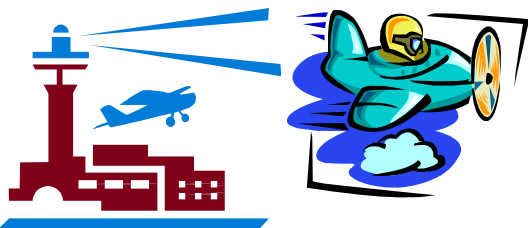
Snohomish County Airport  
AUGUST 2006

## Farewell to Sheri Kasen!!!



Sheri Kasen, Air Traffic Control Tower Chief at Paine Field, has accepted the position of Tower Chief at Boeing Field. Sheri came to Paine in early 1991. Jeff Osborne will be Acting Manager until a new manager is hired. A bid has gone out for the new manager at Paine.

**We will miss Sheri and wish her the Best in her new job!**



## REMINDER

**New rental rates for hangars went into effect Aug. 1, 2006**

**If you have questions  
Call Susan Kern at  
(425) 353-2110 x 2226**

## Washington Pilots Association



### SWAP MEET

**AUGUST 5, 2006, NOON-4**

***GREAT STUFF  
AIRPLANE AND NON-AIRPLANE***

www:wpa-paine.org

**Bring stuff to sell and  
money to purchase!  
OPEN TO EVERYONE**

**AT THE EVERETT COMMUNITY  
COLLEGE AVIATION SCHOOL  
9711 31ST PL. W @ PAINIE FIELD**

**LUNCH AVAILABLE FOR \$5 with  
reservations @ wpa-paine.org/  
monthly\_meetings**

## Attention Paine Field WPA Members

If you are registered with Fliteline Services for the BP fuel discount AND if you have recently had your card replaced by BP you may experience a problem with the discount. If this occurs, contact Joyce at Fliteline to re-register your card. Remember, you must be a current paid up member of the Paine Field chapter to continue participation in this program.

## Museum of Flight Day Camp



The Museum of Flight offers a day camp at Paine Field every summer; it meets at the Restoration Center. The class teaches the physics of flight, as well as the basics of restoration and display of historic aircraft. The photo above shows the campers assembling a cardboard wing rib. This would be a common procedure in restoration of an old plane.

## Upcoming Events

- Aug. 3 MRD Meeting  
canceled
- Aug. 5 WPA Swap Meet

## Airfield Paint Striping

Around the middle of August, the Airport will repaint all runways, taxiways, holdlines, and also the landside roadway markings. Apply-A-Line, Inc from Pacific, Wa. was awarded the bid for this project. Apply-A-Line has performed many painting projects on the Airport and we are looking forward to their return this summer. The project is scheduled to take ten days, including paint removal and reapplication. Due to the layers of paint on the edgelines of 16R-34L and 11-29, we will have to remove the old paint prior to reapplication. This may require periodic closures of portions of the runway to perform the work, so please be aware of NOTAMS prior to departing.

## KILO 1 Taxiway



Work is now underway for the new Kilo 1 taxiway and parking apron.



This new 1000' long taxiway will connect at the threshold of runway 16R and go west towards the Future of Flight. There will also be a new concrete parking apron built adjacent to the Future of Flight to accommodate aircraft deliveries and other special events.

Construction began in early July and will continue until October. During construction, the Glideslope to runway 16R will be shutdown due to the grading and paving activities taking place in the glideslope critical area. However, the localizer will be in operation the entire time.

Additionally, the runway 16R threshold will be relocated 1500' south for 20 consecutive days beginning August 21<sup>st</sup> until September 9th, leaving 7,500' of runway available for takeoff and landing.

For questions about this project, please contact Bruce Goetz, Superintendent of Operations at 425-353-2110 x2230.